



Simple.
Discreet.
Effective.

Atlas SOSone is a lightweight and discreet **personal emergency alarm**. Its design makes it easy to **summon help** in an **emergency**. Links to any Android or Windows 10 smartphone, and integrates with Aspect PPS **lone worker monitoring** systems.

Atlas SOSone is **different** from other **SOS devices**. It works with all **Android** and **Windows 10** mobile devices and its **rechargeable battery** lasts up to a year or more.

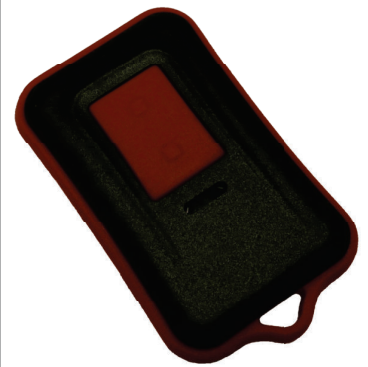
It's simple to use and **no data connection** is needed to send an alert. Your **screen can be locked** with a pin code and it will still work. It's **designed to be an SOS button**.

Weighing less **than 16 grams**, **Atlas SOSone** can be attached to a key chain or lanyard or popped into a shirt pocket and be **barely noticeable**. Its' design makes it **easy to use discreetly** and because of **in-built vibration feedback** no one would know but the user when it's activated.

Atlas SOSone is there when you need it. Atlas SOSone **gives you**, your family, friends and colleagues **true peace of mind** with the knowledge that **help is only a button press away**.

Overview

- Dedicated SOS button for Android & Windows Smartphones
- User awareness through vibration feedback
- Activate an SOS Alert even when the screen is locked
- GPS Positioning for use outdoors & Indoor¹ positioning using WiFi
- Man Down detection (Angle, Angel &¹No Motion or No Motion only)
- Pre-warning sound and vibration if a Man Down status is detected
- Widget for easy access to common user controls¹
- Smartphone and **Atlas SOSone** can be up to 50m apart (LOS)
- Discreet and Lightweight (Less than 16g)
- Up to 1 year or more from a single charge
- View **Atlas SOSone** status from the companion app
- Companion apps available on Google Play and Windows Store



Features

Alert Activation

Dedicated SOS Button (Physical & On-Screen)
Man Down detection with pre-warning
Amber/Yellow Alert Voice call simple activation

GPS Positioning

Configurable GPS update intervals
Configurable GPS Fix timeout
GPS Position transmission on alert activation
Output is in NMEA RMC format for easy integration
Operates seamlessly with VitLink PPS

WiFi Positioning¹

Position users based on WiFi Access Points
VitLink WiFi Data Protocol (@Isle Systems)
Operates seamlessly with VitLink PPS

Configuration & Status

View **Atlas SOSone** battery level via app
Over The Air (OTA) configuration
Direct configuration access protected by PIN
Lockable user controls

Alert Transmission

SMS Text alerts
Voice call alerts¹
Alert transmission over WiFi/GPRS/3G/4G if available

Alert Actions

Up to 2 SMS Alert text messages are sent.
Voice Call a preset number¹
Retries SMS and Voice calls automatically
Auto answer calls or auto call back when in alert mode¹

Status Reports¹

Atlas SOSone button Click (Selectable – Single, Double, Triple)
Low Smartphone Battery
Charger Connected / Disconnected
Lone Working Activated / Deactivated
All Status reports include GSM Signal Level, Phone Battery Level, **Atlas SOSone** Battery Level, Lone Worker On/Off and Man Down On/Off.

GPS Tracking (Option)¹

Can be permanently disabled by Isle Systems to facilitate workforce acceptance

Delivered over GPRS/3G/4G or WiFi connection
Caching of data for delivery when server is available
Configurable update intervals
Selectable Isle Systems Protocol or TK103 Protocol

WiFi AP Tracking¹

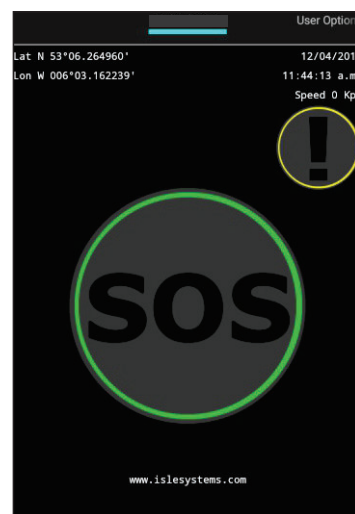
Can be permanently disabled by Isle Systems to facilitate workforce acceptance

Position based on up to 10 WiFi access points
Delivered over GPRS/3G/4G or WiFi connection
Caching of data for delivery when server is available
Configurable update intervals

¹. Feature not available on Windows Phone or Windows Mobile



Android Companion App



Android Widget User Controls & SOS



Windows 10 Mobile Companion App

