



elastic.io

New challenges with cloud integration





NEXT GENERATION IPAAS

- First European iPaaS, cloud-native, elastically scalable deployed entirely in Germany
- Pre-defined and ready-to-use connectors to save up to 80% of integration implementation and maintenance costs
- Industry-first microservice-based integration platform as a service ensuring high level of isolation and scalability
- Low-latency event-based infrastructure, perfect for Mobile & IoT integration support
- High scalability in case of increased data volumes, can be deployed both in the cloud and on-premise

Problem

“It takes 3 to 5 months to build a new integration”

IT Architect, SaaS ISV

“We have tons of batch integrations processes that run at 3am and it is hard to keep track of them”

CTO, Large E-Commerce Retailer

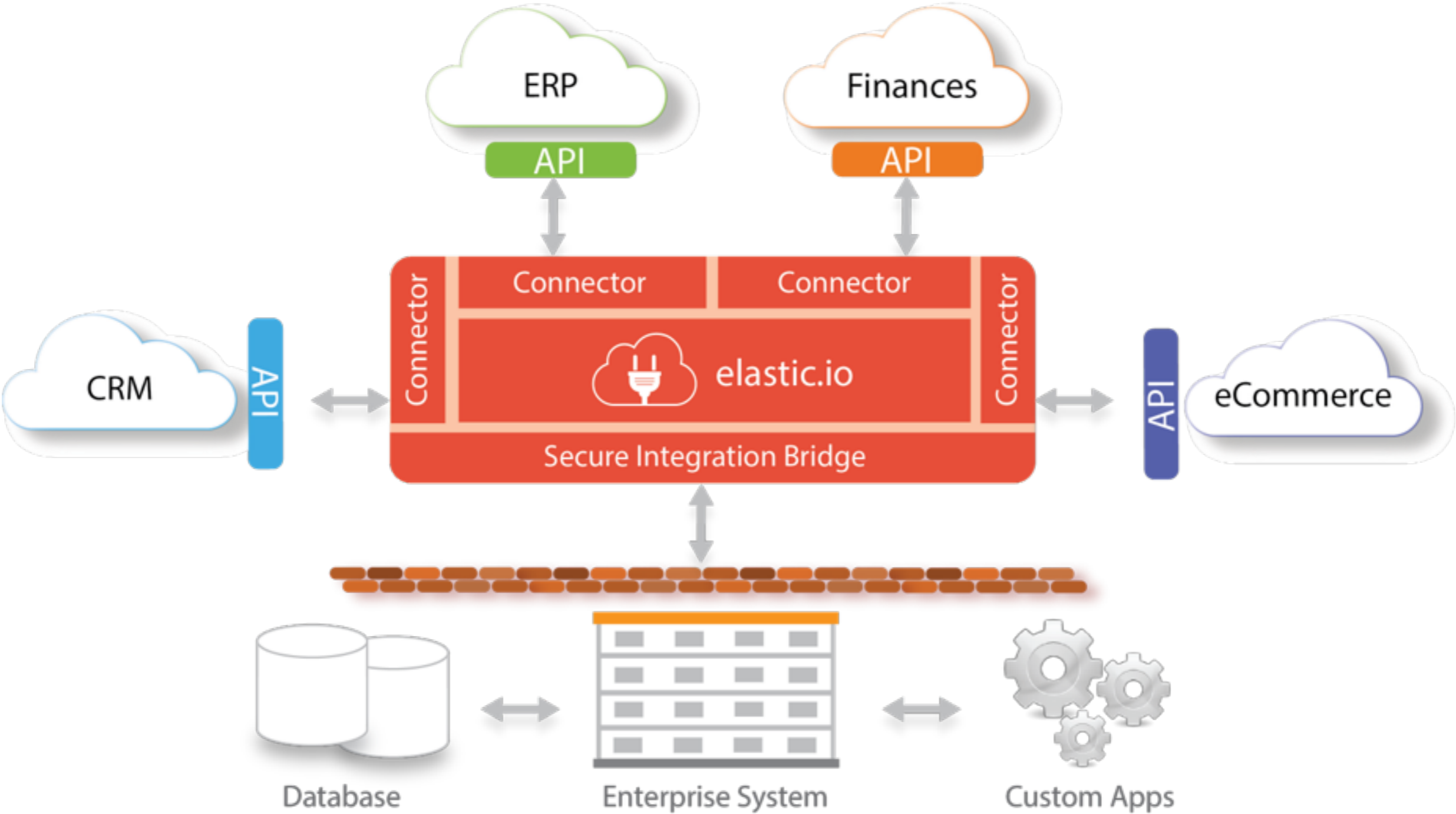
“We have to type in our Customer Data and Orders manually”

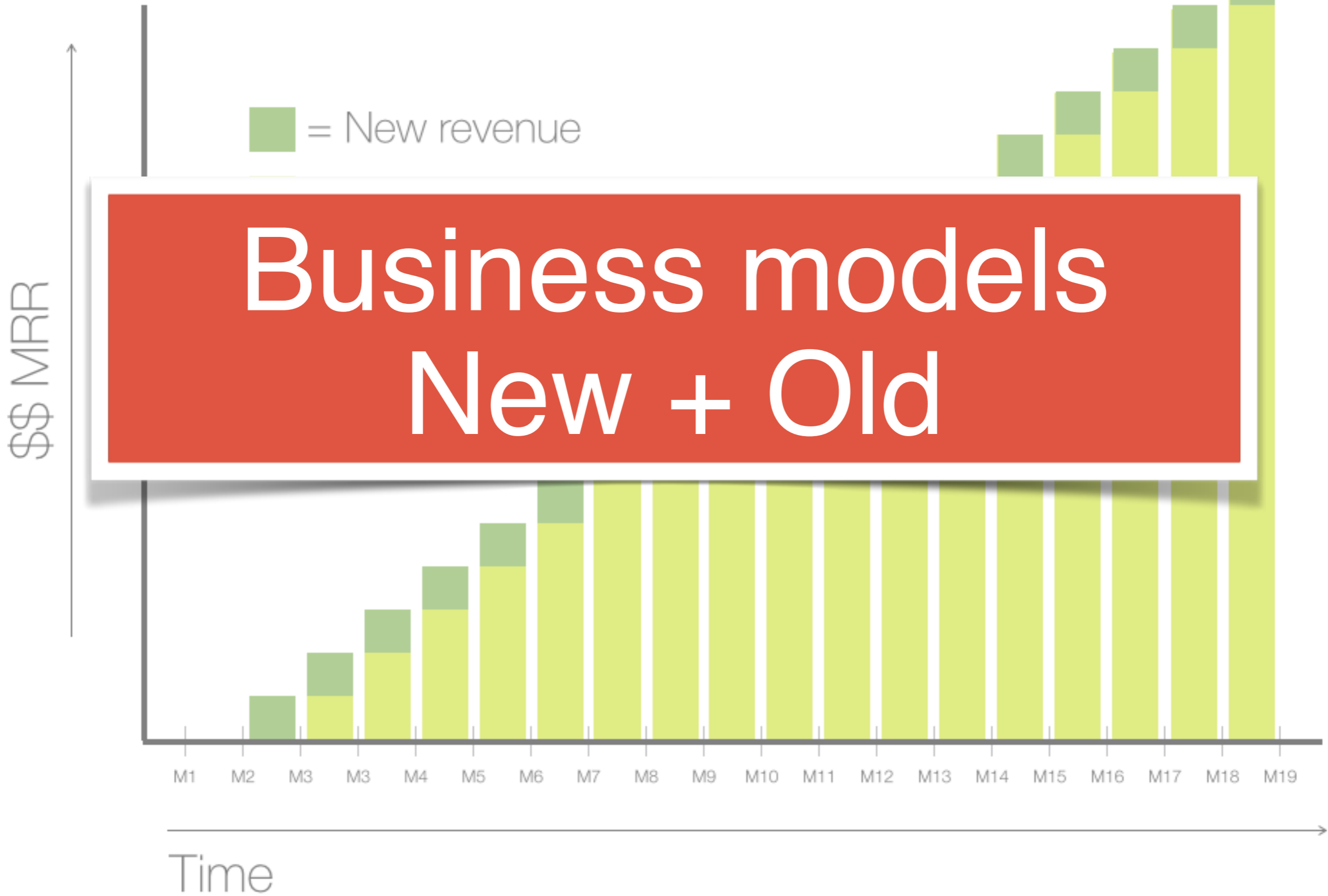
IT Director, Manufacturing Company

“Doesn't matter how fast we deliver new integrations, business always perceives as too slow”

Head of Integration Department of large multinational corporation

High level - no point-to-point





WHOLE
ERE

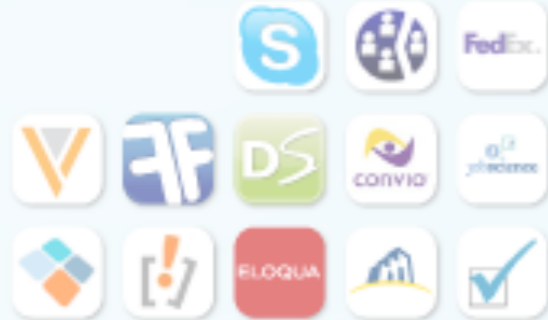
world's first c
on the AppEx
change has
d and deploy

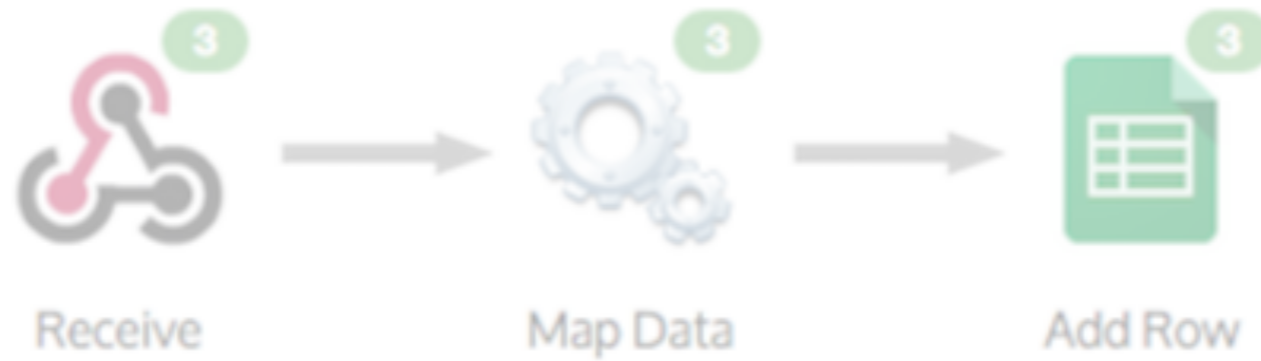
1,000,000
LLS

Ecosystems New + Old

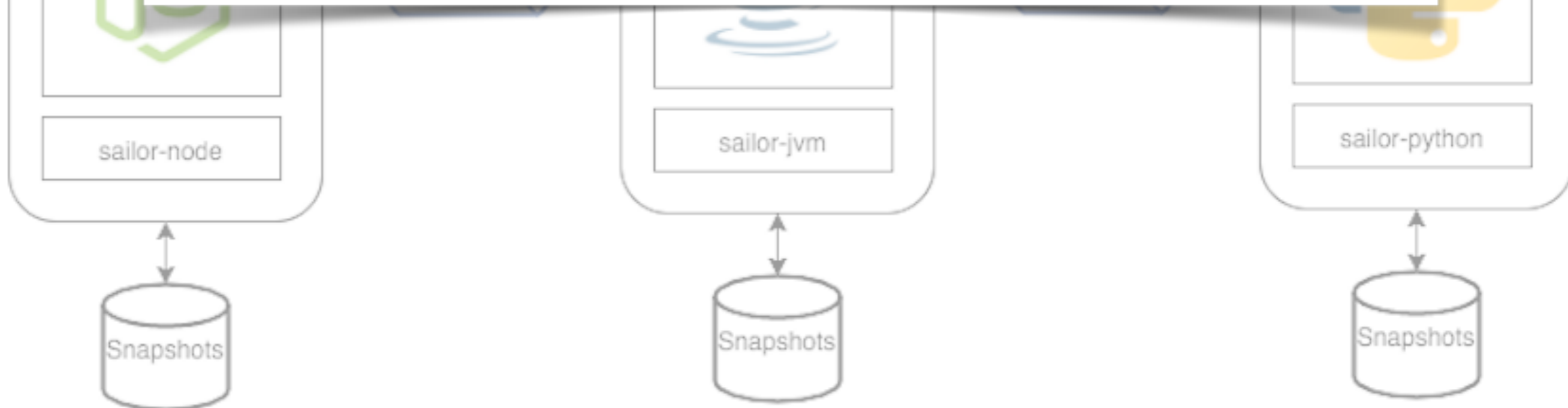
259,015

462,932





Technology & Standards New + Old



F.A.Z. exklusiv

Daimler baut Konzern für die Digitalisierung um

Das Unternehmen eilt von Rekord zu Rekord, aber Ausruhen ist nicht erlaubt. Neue Strukturen

07.09.2016

f Teilen

- Merken
- Empfehlen (46)
- Lesermeinungen
- Drucken
- Permalink

Organizations New + Old



Schluss mit der Rentenpanik!
 Von RALPH BOLLMANN
 Die Rente soll zum großen Thema im Wahlkampf werden. Neue Statistiken weisen darauf hin, dass Altersarmut keine so große Bedrohung darstellt wie angenommen. [Mehr >](#) ★ 1



Leserfavoriten Wirtschaft

Gelesen **Empfohlen**



Contact

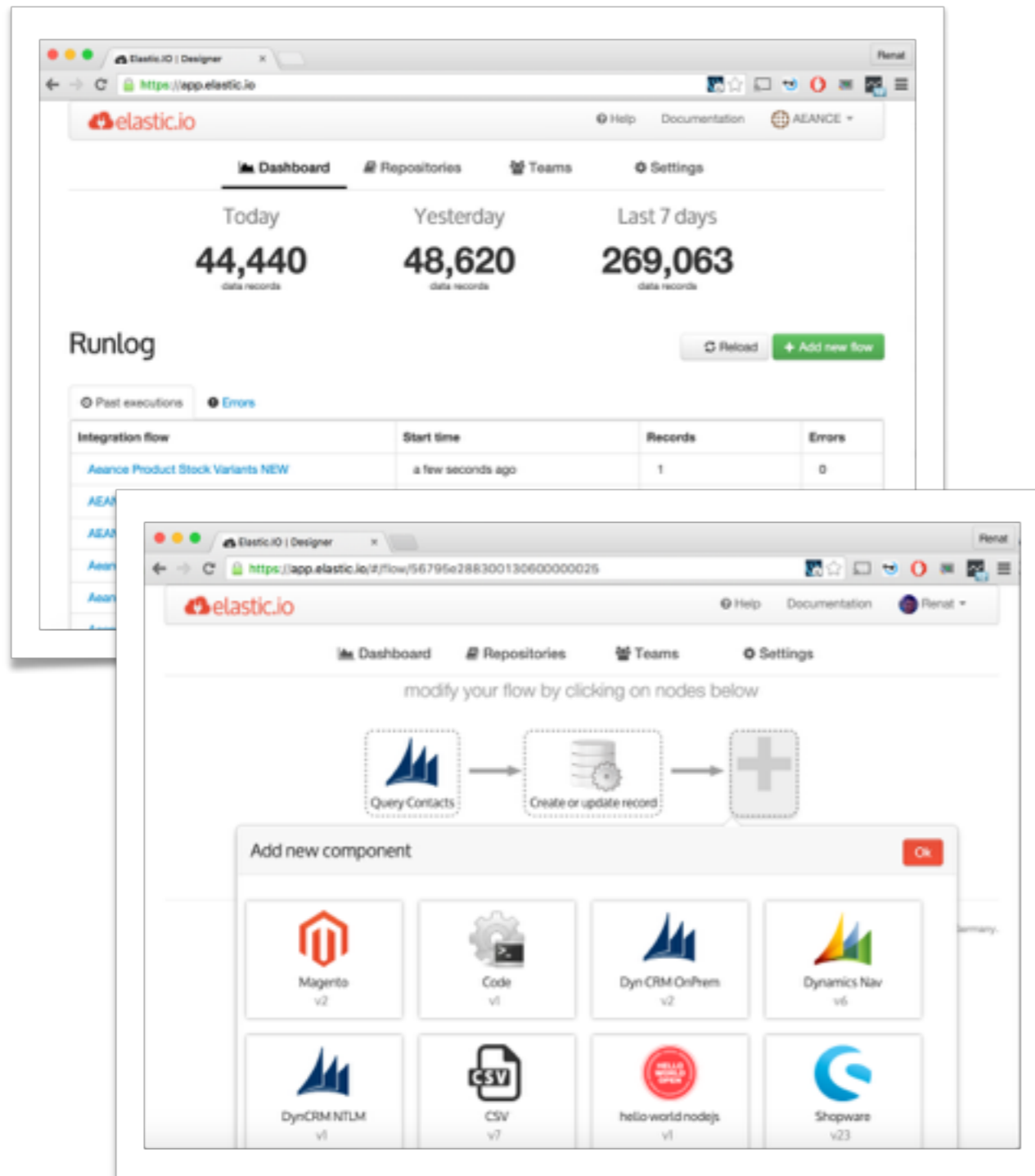
elastic.io GmbH
Quantiusstrasse 21
53115 Bonn

+49 228 53 444 221
www.elastic.io
info@elastic.io

Backup

General Concepts

Integration platform



- Cloud-native, multi-tenant integration middleware
- May run in public / hybrid and private cloud environments
- Works in combination with API Enablement and existing/on-prem middleware (e.g. ESBs)
- Integrations are grouped in a number of integration flows
- Each flow models closely to data / events flow

General Concepts

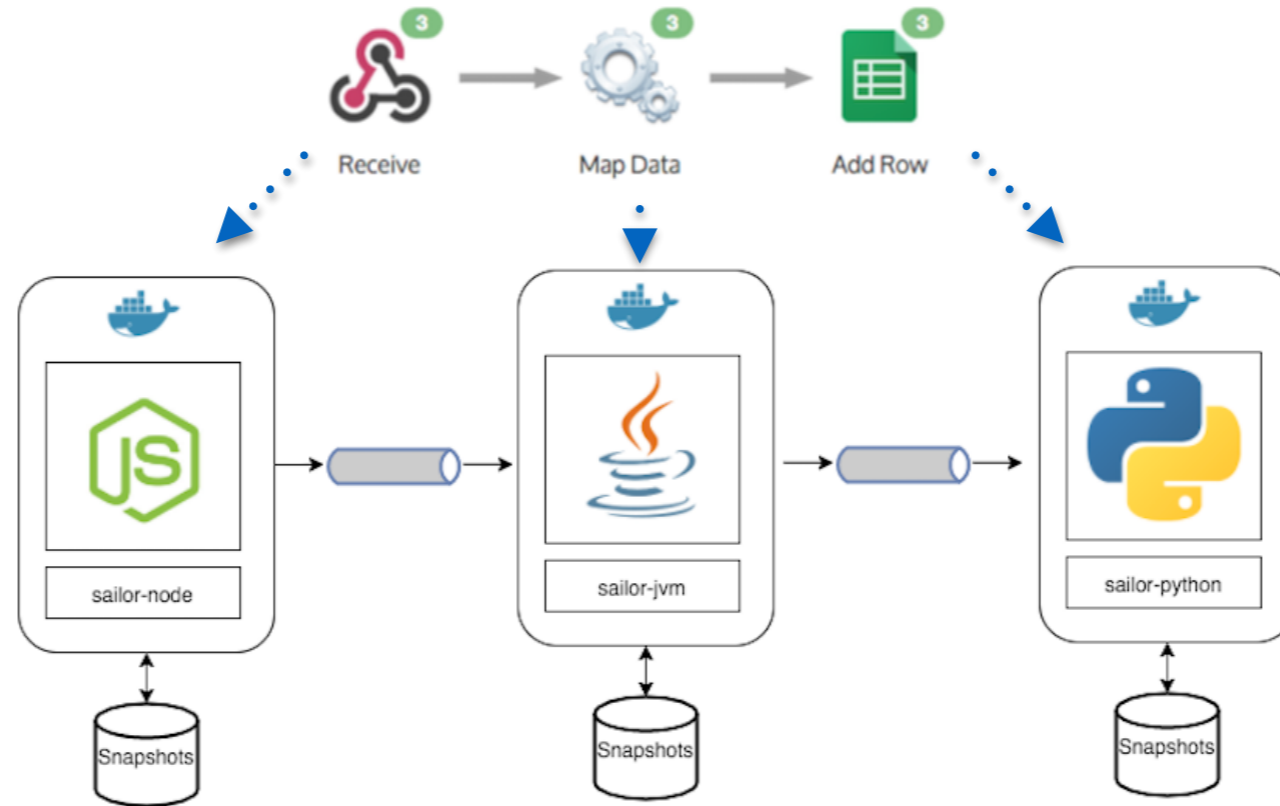
Integration flow(s)



- Integration flow is a ordered acyclic graph of integration actions, e.g. “*Query Products*”
- Each action along the flow is a part of integration component, e.g. “SAP”
- Data is transferred along the graph via persistent FIFO queues
- Each integration component has a source data queue, destination data queue and immutable configuration data that is passed in component start
- First component in the integration flow has a special role (trigger)

General Concepts

Integration flow - behind the scene



- Each integration component is a *12factor app*
- Lifecycle of each individual integration component is controlled by the platform
- Each component have an external persistent storage for it's state
- Logging information is gathered from STDOUT/STDIN and stored/forwarded for later use
- Performance telemetry is gathered via Docker APIs and stored/forwarded for later use

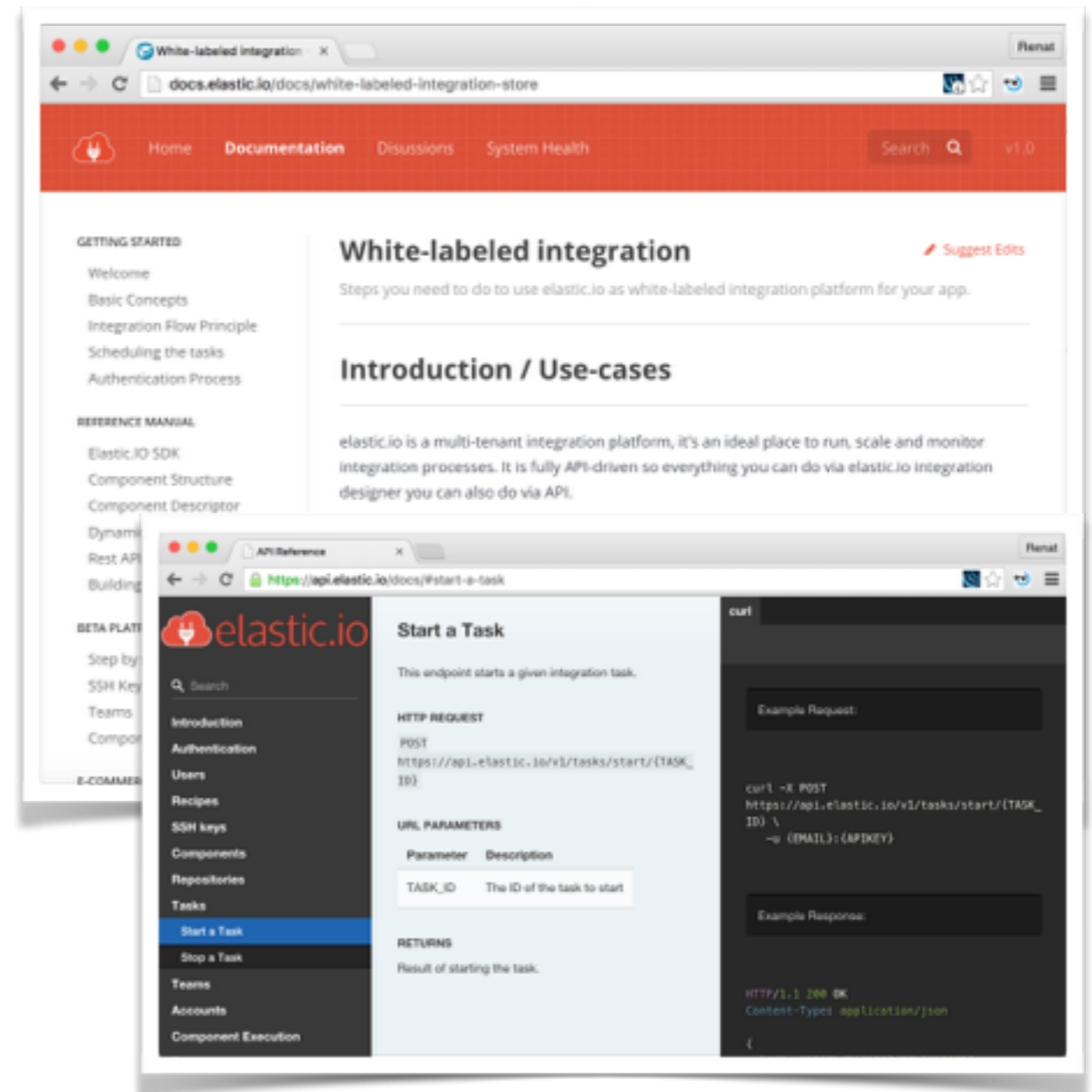
Supported standards



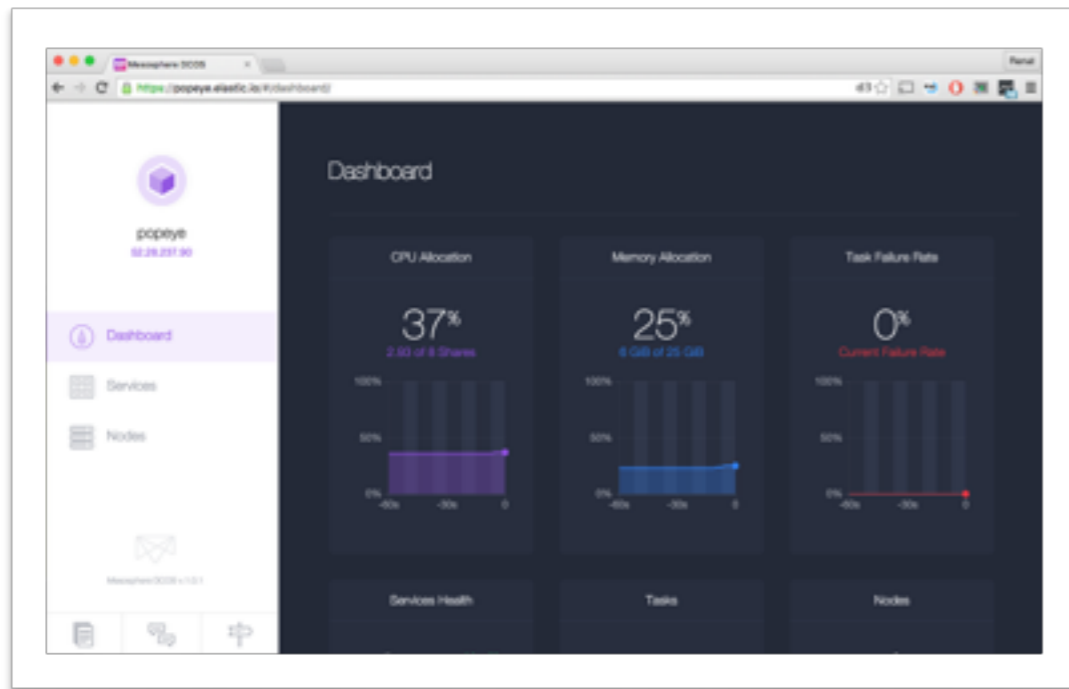
- Out-of-the-box runtime container environment is *ubuntu-debootstrap: 14.04.2*
- Pre-defined connectors for SFTP, HTTP, JDBC, SMTP, CSV, OData
- WS/SOAP support using Apache CXF
- REST component support for Open API Initiative (aka. Swagger)
- Queuing via AMQP (0.9.1)
- MQTT / XMPP / WebSockets / WebRTC support is planned

Embedded & API-Based

- Industry first white-labelling approach based on API-first design
- Multiple options starting with embedded integration store up to the comprehensive developer platform
- Powerful and scalable, multi-tenant integration platform under your own branding
- Single sign-on



Competitive differentiation



- Cloud-native, web-scale, microservices based iPaaS
- Highest performance and scalability with low latency, perfectly suitable for CEP and IoT use-cases
- DevOps / LOB Developers friendliness and openness
- SDKs for multiple programming languages as well as Docker-native runtime
- API-first approach to integration platform management
- Highest level of data protection and regulatory compliance