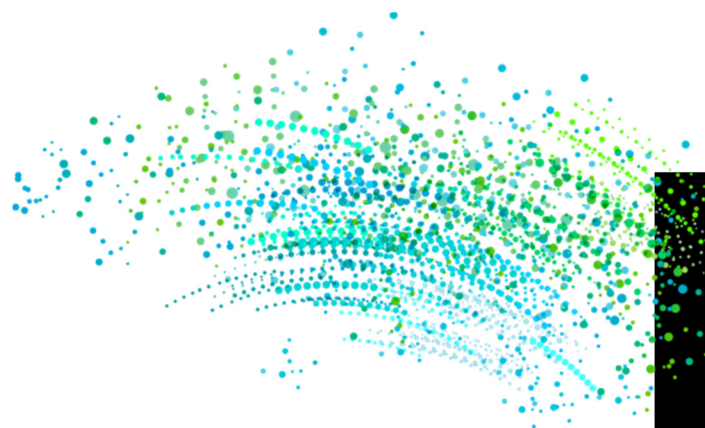




**teradici®**

teradici.



Product Overview

# **PCoIP<sup>®</sup> Workstation Access Software 2.0**

**Not for release until:  
April 28, 2015  
9 a.m. PDT/Noon EDT**

# Agenda



- > What's New with Release 2.0?
- > Key Messages
- > Business/IT Problems to be Solved
- > Features and Functions
- > Customer Success Stories
- > Deployment Scenarios
- > Competitive Landscape and Differentiators
- > Pricing and Availability
- > Key Takeaways



# What's new with Release 2.0?



## Capabilities

### Tight Security

- With embedded PCoIP technology, all transmissions are encrypted and authenticated, and only pixels, not data, to enable a higher level of data security
- Data Center deployment: Native secure remote access and security gateway

### Deployment Options

- Ability to deploy deskside or now data center/virtualized (NEW) with Leostream broker support
- VPN-less WAN access
- Supports VMware ESXi
- Maximizes workstation applications and utilization across multiple users and or locations
- Native secure remote access

### Mobile Client Support

- Compatible on IOS and Android tablets

*“Teradici PCoIP Workstation Access Software is budget friendly, easy to deploy and manage and offers the benefits of virtualized workstation support...”*  
**DAN STREUFERT**  
DIRECTOR OF IT  
MEDPLAST

## Benefits

- Tighter control of corporate intelligence – data never leaves the company

- Faster access – VPN not required

- Further supports BYOD with broader client support

**BURNABY, British Columbia – April 28, 2015** –Teradici®, developer of industry-leading PCoIP® technology for virtual workspaces, today announced updates to PCoIP Workstation Access Software, which enables the solution to be deployed in data center environments – gives end-users access to new mobile clients, and expands availability to new markets in APAC and EMEA.

# Key Messages: A New Level of Flexibility for Remote Access



- > **Seamless anywhere access:** Workstation access whether at home, on the road, onsite, or in a conference room
- > **The PCoIP experience:** Delivers an outstanding remote experience to demanding CAD/CAM workstation users
- > **Easy to deploy and maintain:** Up and running within minutes; no new IT tools to learn
- > **Flexible deployment options:** Deskside or within the data center
- > **Ensures datasets stay in a centralized location:** Reduces wait times and risk of using outdated data among teams



**IT and business needs vary between customers but can be summarized as follows:**

## **WORKSTATION USER**

Work outside the office or from home, while demanding high performance and dealing with huge amounts of data

## **BUSINESS MANAGER OR CIO**

Decrease costs, meet productivity goals, protect IP while staying flexible

## **IT MANAGER**

Meet stakeholders' needs, maximize existing tools

# Key Benefits Addressing IT/Business Concerns



## Instant Remote Visualization. Access Anywhere.

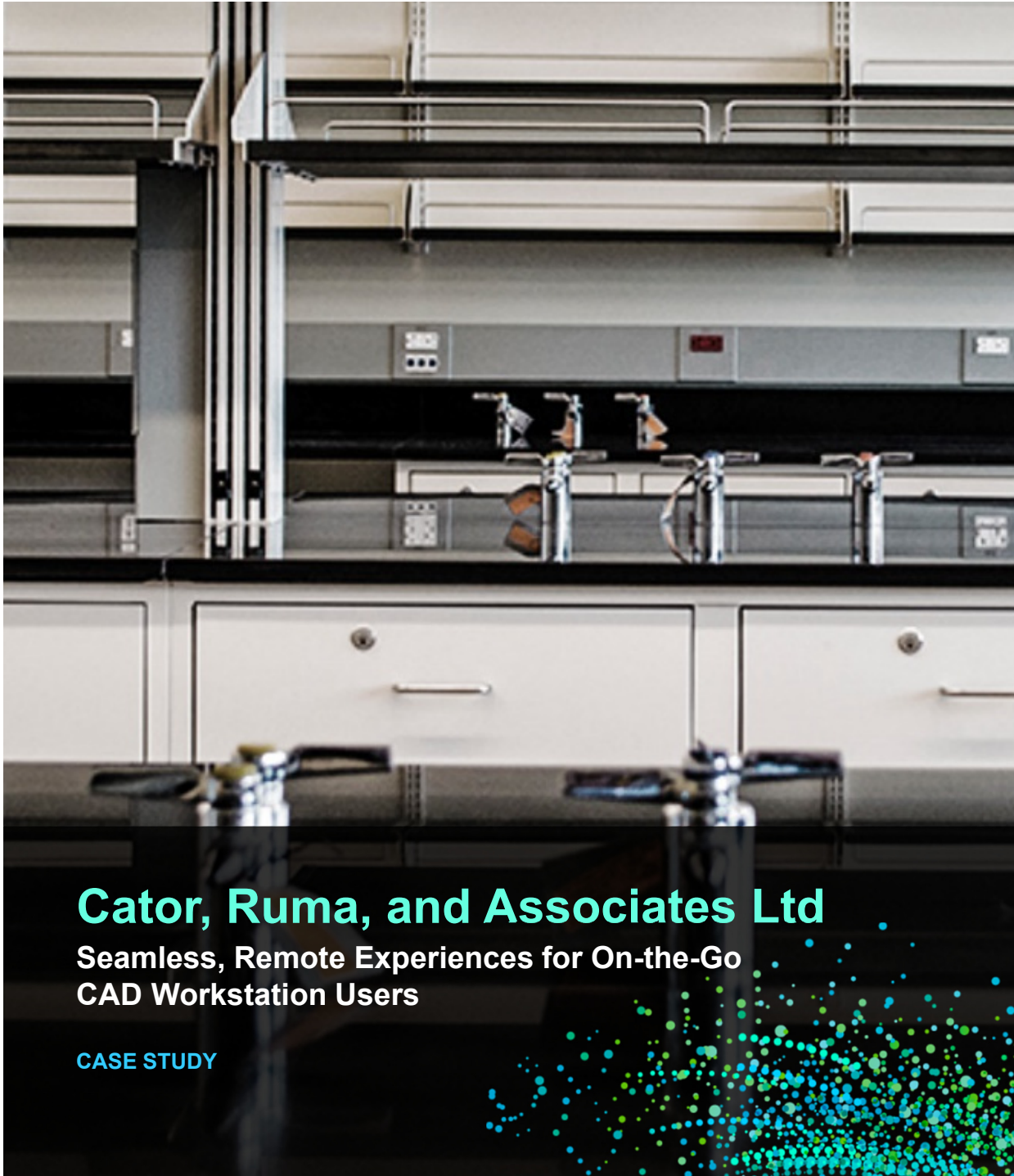


# Features & Functions Supported for PCoIP Workstation Access Software 2.0



		Win 2008 R2 SUS	Win 7 64 bit	Win 8.1 64 bit
<b>Clients</b>	Zero Client (Tera 2 only) Support	●	●	●
	Software Client (MAC OSX and Windows)	●	●	●
	Mobile Client (iOS tablet) and Android)	●	●	●
<b>Connect</b>	Leostream broker support	●	●	●
	Direct Connect	●	●	●
<b>Features</b>	Network Printing	●	●	●
	USB support for Zero Client - Storage Devices	●	●	●
	Bridged USB from Zero Client-HID devices ( <u>3D mouse, Wacom Tablet</u> )	●	●	●
	Copy and Paste for Software Clients	●	●	●
	Open GL and Accelerated 3D support	●	●	●
	Compatible with any GPU, optimized on NVIDIA compatible GPUs	●	●	●
	Dual Monitor Support	Manual set up for datacenter user case		
<b>Workstation Host</b>	ESXi 5.5 Hypervisor ( <u>with GPU pass through</u> )	●	●	
	Hosts OS	●	●	●





## Cator, Ruma, and Associates Ltd

Seamless, Remote Experiences for On-the-Go  
CAD Workstation Users

CASE STUDY



### > About

Engineering services firm serving clients in the construction industry

### > Challenges

IT burden for providing remote access; slow performance for remote dual-monitors; low-quality graphics

### > Solution

Teradici PCoIP Workstation Access Software

### > Results

Remote dual-monitor CAD experience equal to local workstation, even over slow network connections; cost avoidance (network upgrades); ease of support (time savings for IT)



## Hi-Tek Manufacturing

Easy, Instant Access to Remote 3D CAD Apps with  
Teradici PCoIP Workstation Access Software

CASE STUDY



### > About

Manufacturing for gas turbine and aerospace industries

### > Challenges

Restricted space/cooling for workstations in conference rooms; reliance on local-only talent; securing design assets

### > Solution

Teradici PCoIP Workstation Access Software and Software clients; Zero Clients; Remote Workstations

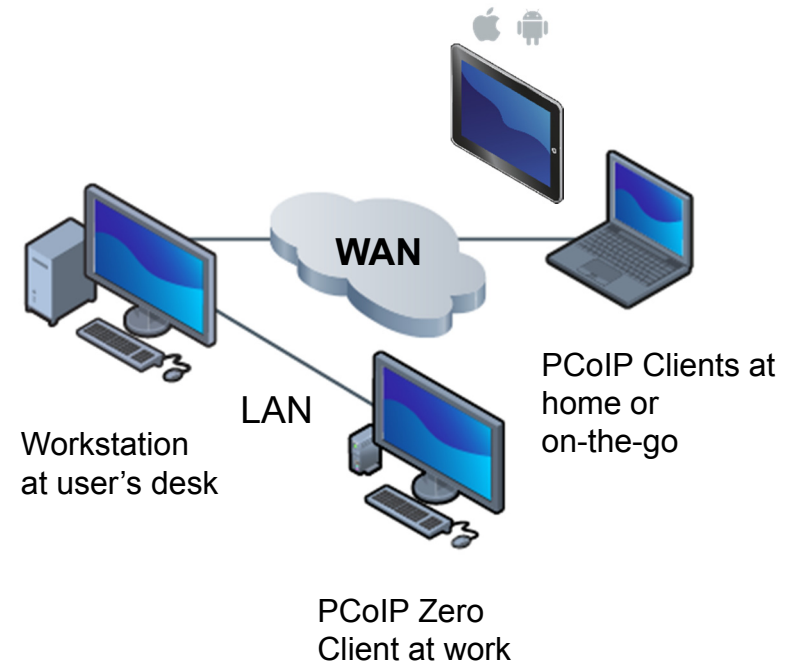
### > Results

More client choices, with excellent 3D CAD user experiences; easy support; assets locked down on servers; easy remote sessions for non-local staff



## Access your local workstation from work, at home or on-the-go

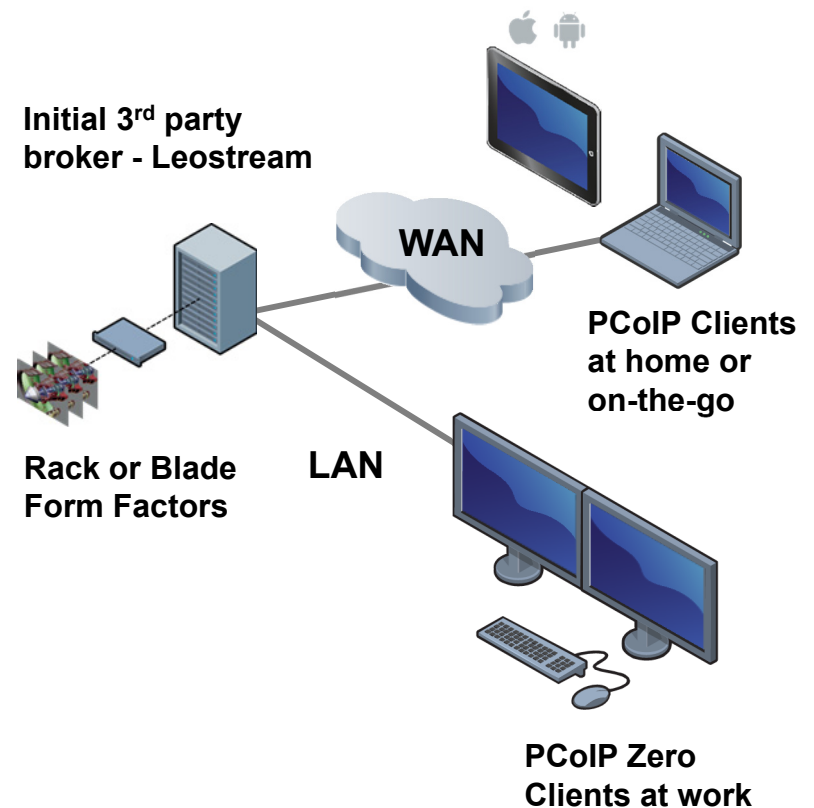
- Uncompromised remote end-user experience
- Increases mobility and creates a flexible working environment
- Direct connect
- Quick to install and easy to manage



**Tower Form Factor**

## Cost-effective and scalable virtualized solution

- Compatible with VMware vSphere<sup>®</sup>, ESXi 5.5 and later with GPU Pass-Through
- Works with Leostream<sup>™</sup> Connection Broker 8.1
- Cost effective with license pool
- Maximizes workstation application usage across multiple users and locations
- Better control and management of computing environment
- Secure remote access without VPN



# Competitive Landscape & Differentiators



	teradici PCoIP		hp	CITRIX
	PCoIP ACCESS SOFTWARE	PCoIP REMOTE WORKSTATION	RGS	HDX 3D PRO
Robust user experience at higher network latencies and packet loss (UDP based)	✓	✓	Requires Velocity	X
High-performance <b>lossless</b> capability	✓	✓	X	X
Operating Systems supported	Windows	Windows, Linux, OS X	Linux, Windows	Windows
Remote Workstation Power Management	X	✓	X	X
Compatible with workstation class <b>true zero clients</b>	✓	✓	X	X
Soft clients supported	OS X, Windows, iOS, Android	OS X, Windows	Linux, Windows	OS X, Windows, Linux, iOS, Android
Strong Partner ecosystem and protocol available for multiple use cases: VDI, DaaS, Workstation	✓	✓	X	✓
WAN optimization options	✓	✓	✓	✓
Support virtual GPU pass-through	✓	✓	✓	✓
No impact on application performance	X	✓	X	X
Suite B and AES 256 Encryption	X	✓	X	X
USB Redirect from Zero Client	✓	✓	✓	✓

# Pricing and Availability



- > **Regional availability:** USA, Canada, UK, Australia, New Zealand, Nordics, Germany and France
  - Adding: Singapore, Malaysia, India, China, Japan, Korea, Taiwan, Hong Kong through Dell Online Store and channel partners
  
- > Per host and per named user licenses
  - \$199 USD, plus \$40 USD for 1-year mandatory support & maintenance contract
  - Auto updates for timely access to each new release or enhancements
  - Licenses – single and packs of 10, 50 and 100 for ease of install for larger deployments (receive one activation code)
  
- > PCoIP Workstation Access Software Resellers (*onboarding more soon*):



**WHERE TO BUY**  
[teradici.com/product-finder/remote-workstation-solutions](http://teradici.com/product-finder/remote-workstation-solutions)

30-day free trial offered



Try now:  
<https://connect.teradici.com/access-sw-trial>

teradici.



## NOW ANYTHING IS REMOTELY POSSIBLE

Make your workstation users more productive by giving them more places to work from.

watch video >

### PCoIP® Workstation Access Software Trial

Things are about to get easier. Teradici PCoIP® Workstation Access Software gives users the freedom to work wherever they want. They'll enjoy the same outstanding experience as they would at their desk, allowing them to be more productive and more satisfied.

#### Key Benefits

- Outstanding remote user experience
- Mobilizes your workforce and improves productivity
- Easy to install and deploy
- Ensures secure remote connections
- Flexible deployment options including deskside or data center



Find a Reseller

Specifications	Host Workstation	
Supported operating systems	<b>Physical</b>	<b>Virtualized</b>
	Windows 8.1 Enterprise 64-bit Windows 8.1 Professional 64-bit Windows 7 Professional 64-bit Windows 7 Enterprise 64-bit Windows 7 Ultimate 64-bit	Windows 7 64-bit (same versions as physical) on VMware vSphere 5.5 with GPU Pass-through

### Start your 30 day trial!

Please fill out the fields below to receive access the download page. Fields marked with an "\*" are required.

First Name \*  Last Name \*

Company Name \*  Job Title \*

Email \*  Phone Number \*

City \*  Country \*

Zip/Postal Code

Industry

# Key Takeaways



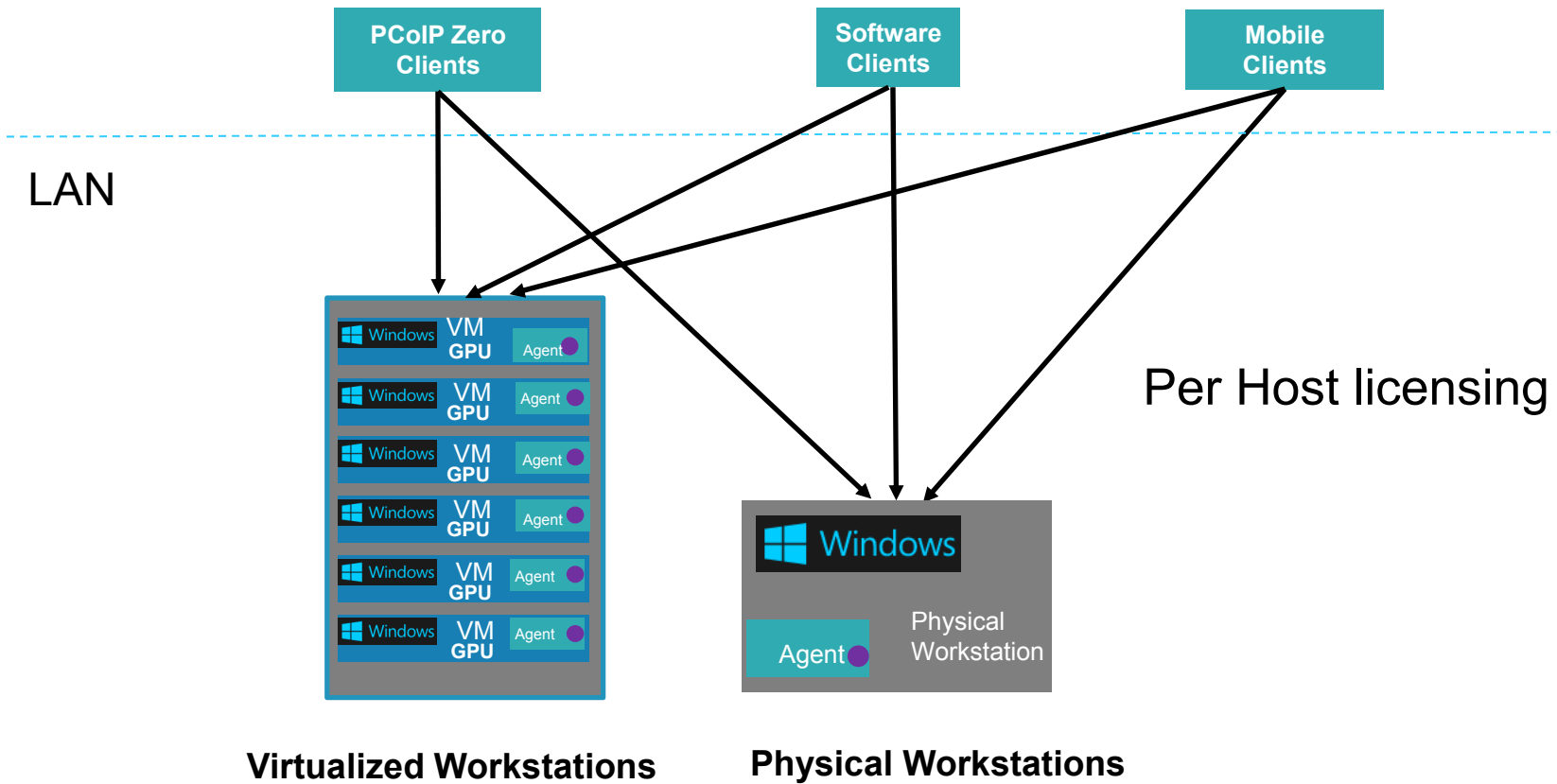
- > Teradici offers a full spectrum of remote workstation solutions to satisfy the most common deployment scenarios and user levels with both hardware and software based offerings
- > PCoIP Workstation Access Software Release 2.0 further supports the needs of businesses and IT within the in AEC and manufacturing sectors by offering the data center deployment option via direct connect or brokered architecture
- > Broad client support from PCoIP compatible end points including Zero Clients, Software Clients and now Mobile Clients for iOS and Android



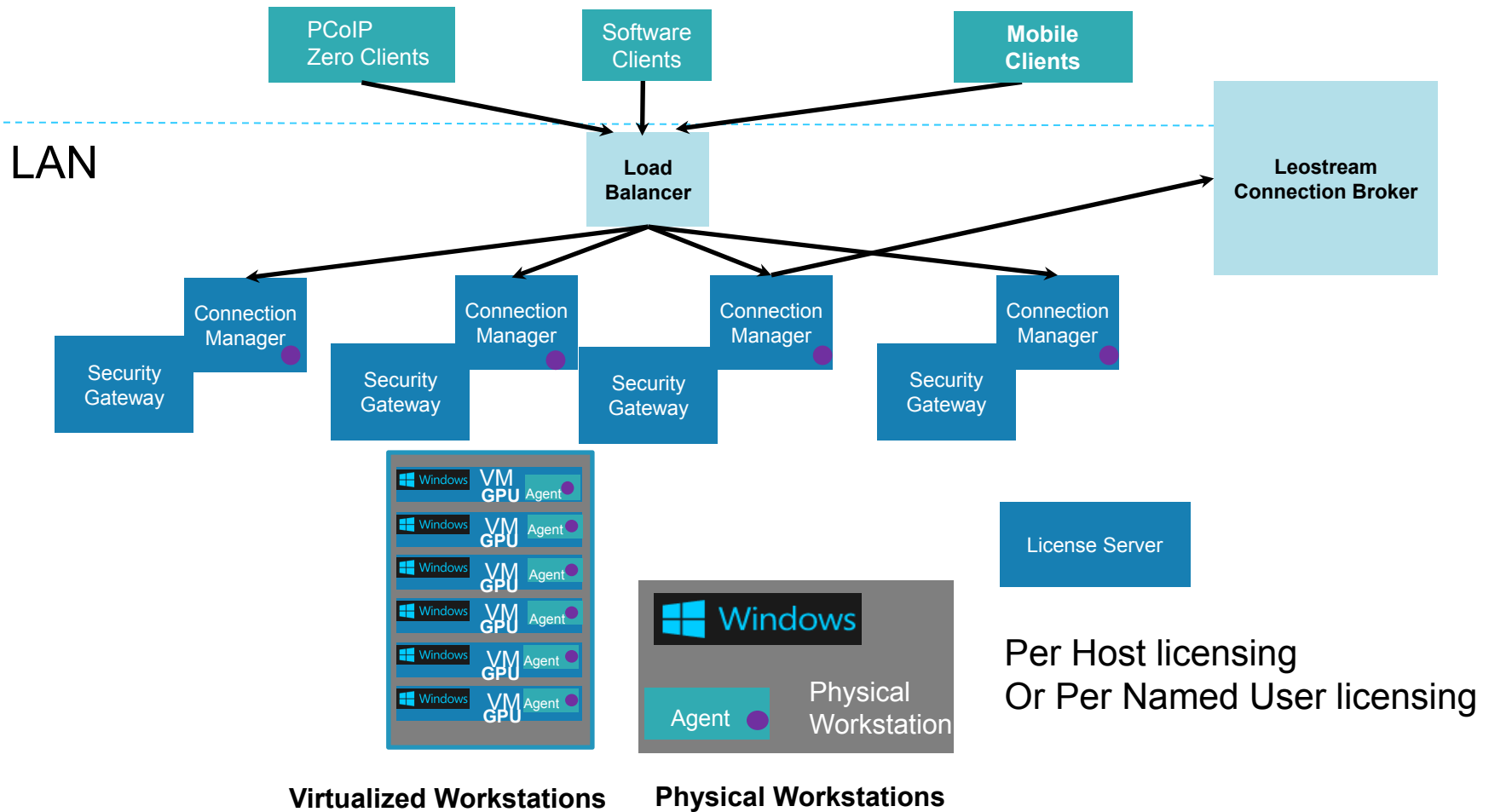
# **APPENDIX**

## **Deployment approaches and specifications**

# Direct Connect Architecture



# NEW with Release 2.0: Brokered Architecture



# System Specifications



	Host Workstation	Client
Supported operating systems	<p><b><u>Physical</u></b>            Windows 8.1 Enterprise 64-bit            Windows 8.1 Professional 64-bit            Windows 7 Professional 64-bit            Windows 7 Enterprise 64-bit            Windows 7 Ultimate 64-bit</p> <p><b><u>Virtualized</u></b>            Windows 7 64-bit (same versions as physical) on VMware vSphere®; EXSi 5.5 or later with GPU Pass-Through</p>	PCoIP Zero Client (P25 and P45), Teradici PCoIP Software Client for Mac or Windows and Mobile Clients for iOS and Android tablets
Hardware & GPU compatibility	Any workstation brands GPU agnostic; optimized on NVIDIA GPU compatible with GRID SDK 2.2 or later	
Display resolution	<p><b>Deskside deployment:</b> Dual monitor, up to 2560 x 1600</p> <p><b>Data Center:</b> Dual monitor, up to 1920 x 1200 (manual setup required)</p>	
3D API compatibility	Latest OpenGL and DirectX 3D APIs supported	



[www.teradici.com](http://www.teradici.com)