

75"

F50-SERIES F7550



Ultra-fast 20-point touch

Using the latest generation touch technology from FlatFrog, the F50 series delivers a highly superior writing experience that is incredibly fast and accurate. The display responds quickly to user interaction with up to 4 passive pens or up to 20 points of simultaneous touch.



2mm Optically bonded glass

Built with cutting-edge, protective glass with no parallax gap between the glass and the display, providing users with a pixel perfect touch experience. Enjoy the latest in 4K LCD technology that contributes to a lighter, thinner display that is incredibly energy efficient, while the anti-glare and anti-fingerprint glass ensure that content is always clearly visible.



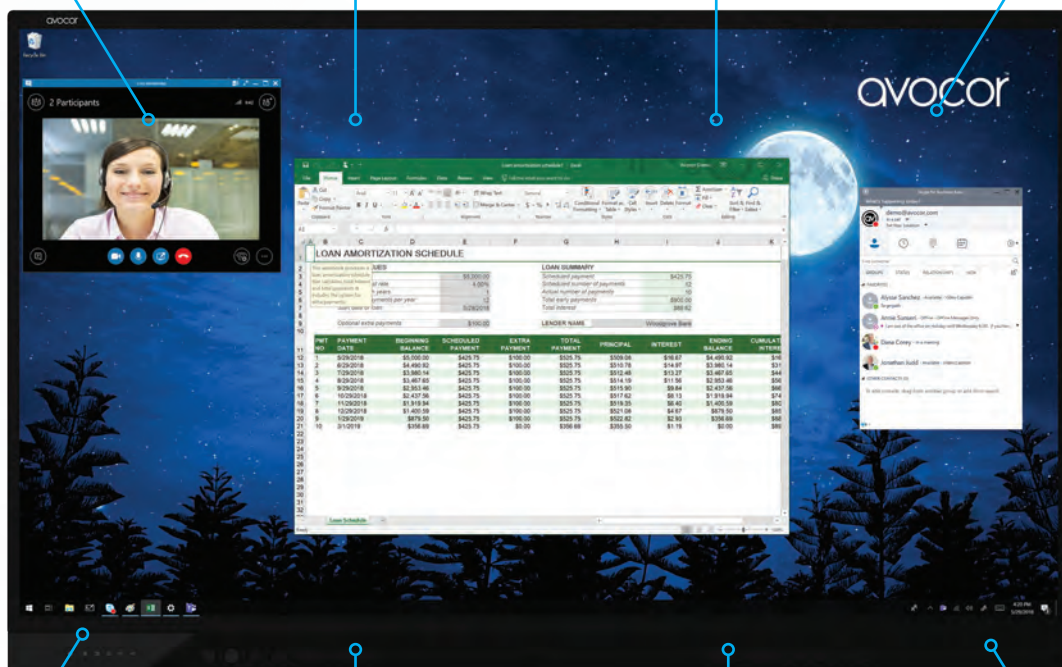
Optimised for Windows 10

The F50 series comes with a built-in Windows swipe bar, optimised for Windows 10.



Latest Intel OPS slot

The OPS slot supports HDMI 2.0 allowing for 4K content to be run at 60Hz, while the Intel OPS (Open Pluggable Specification) allows for a module PC to be added easily to the display without cables.



Inductive key pad for control

Designed with ease of use in mind, the Advanced Connect and Control Bar features back-lit inductive key pads that complement the beautiful, sleek design of the F50 series.



Wireless Screen Sharing

The control bar also features a Wireless Screen Sharing button, enabling users to switch seamlessly to the dedicated HDMI input for 3rd party devices.



Integrated audio conferencing capability

A high-quality, front-facing soundbar module is included in the F50, ensuring that the display provides a crystal-clear audio experience, while the active microphone array allows the display to connect with a variety of Unified Communications based software, delivering the ultimate audio experience.



Pen aware functionality

The fine-tip stylus delivers extremely accurate writing and annotations on the display, while object recognition means that the display can easily distinguish between pen, finger and palm, delivering a smooth touch experience.

avocor™

DISPLAY

Diagonal Size (Inch)	75
Backlight	Direct-lit LED
Aspect Ratio	16:9
Resolution	4K, 3840 x 2160 @ 60Hz
Response Time	8 ms
Brightness	370 (cd/m2)
Contrast Ratio	4000:1
Viewing Angle	178° / 178°
Supported Colours	30-bit Deep Colour
Display Orientation	Landscape

TOUCH SYSTEM

Interface	3 x USB-B 2.0, 1 x USB-B 3.0
Touch	Up to 20 Point Avocor InGlass™ Intelligent touch Supports 4 x fine-tip stylus
Glass	2 mm Optically Bonded, Anti-Glare, Anti-Fingerprint Glass
Supported Operating System	Windows 7 / 8 / 10; Mac OSX*; Linux*

AUDIO

Built-in Speakers	2 x 15W Forward Facing - Each module: 4 x 32mm Drivers & 2 Passive
Microphone Array	Yes - 4 microphones

CONNECTIVITY

Standard IO	3 x HDMI 2.0, 1 x HDMI 2.0 for Dedicated Wireless Presentation Device, 1 x DisplayPort 1.2a, 1 x VGA, 2 x USB-A Hub 3.0, 1 x USB-A OPS 3.0, 1 x HDMI Out, 1 x USB Service port
Guest IO	1 x HDMI 2.0, 1 x USB-B Touch, 1 x USB-A 2.0 HUB, 1 x USB-A 2.0 OPS
Audio	1 x 3.5mm Audio Out, 1 x 3.5mm Audio In, 1 x Optical (SPDIF)
Control	1 x RS-232, 1 x LAN In Ethernet (RJ-45)

PHYSICAL SPECIFICATIONS

Product Dimensions	1791.8 x 1114.9 x 103.1 mm 70.5 x 43.8 x 4.05 inches
Shipping Dimensions	2092 x 1319 x 286 mm 82.3 x 51.9 x 11.2 inches
Weight	Net: 61 kg 134.4 lbs / Gross: 76.2 kg 167.9 lbs+
Wall Mount (VESA)	800 mm x 400 mm 31.49 x 15.49 inches
IPC Mount	75 x 75 mm 2.95 x 2.95 inches
IPC Mount	100 mm x 100 mm 3.93 x 3.93 inches
OPS Slot	Yes, 3840 x 2160 @ 60Hz
Handles	4

OSD FUNCTIONS

Source Auto Detect Function	Yes
Image Settings	5 x User/ Vivid/ Cinema / Game / Sports

POWER

Power Supply	AC100-240V (Worldwide), 50/60Hz
Maximum Power Consumption	<300 W
Standby	≤0.5 W

ENVIRONMENTAL

Operating Temperature	0°C ~ 40°C
Storage Temperature	-20°C ~ 60°C
Humidity	30% ~ 85%

SOFTWARE OPTIONS**

Avocor Note by Nureva software license | Qwizdom OKTOPUS software & 5 x Qwizdom Notes+ licenses | Ximbus 3 year subscription

WHAT COMES IN THE BOX

1 x Remote control & batteries, 2 x Fine-tip passive touch stylus, 1 x UK, 1 x EU, 1 x US power cord, 1 x USB cable (3m | 118.1 inches), 1 x HDMI cable (3m | 118.1 inches), 1 x Quick Start Guide, 1 x USB Drive – User Guide

WARRANTY

UK & Northern Ireland warranty: 3 year RTB warranty as standard with a 5 year on-site upgrade option available.
EMEA & Republic of Ireland: 5 year RTB warranty as standard.
ROW warranty: 3 year advanced replacement warranty as standard with a 4 or 5 year upgrade option available.