

Time is Treasure.....The Gold Standard Response
FirstNet | CrisisGo | Sonim

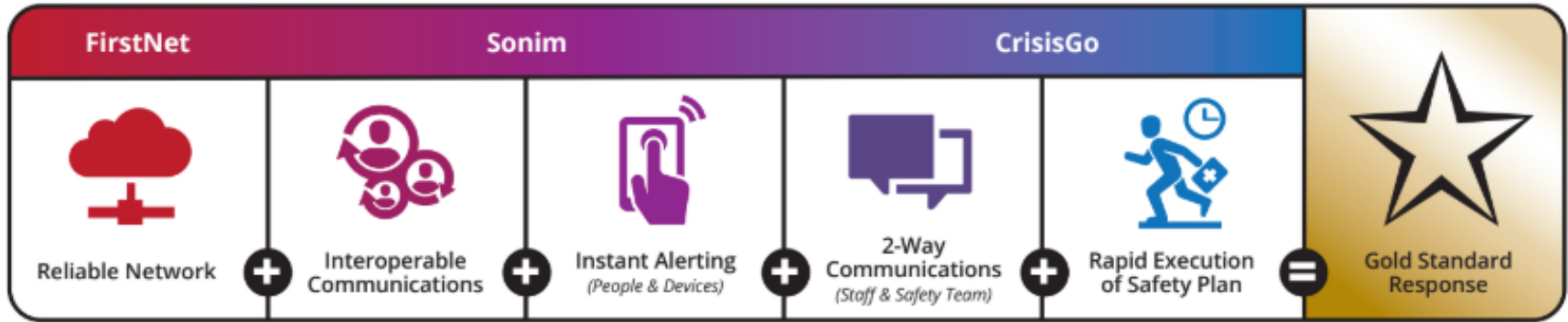
May 2019

Time is Treasure

There are multiple components in a response time protocol:

- Who can make the emergency call in your district.....and does your district know this?
- How has one been trained in this area?
- How quickly does the caller information get to responders?
- How quickly do responders get to the crisis?
- What should staff and students be doing in the interim?
- How is staff and students messaged during this high profile event?

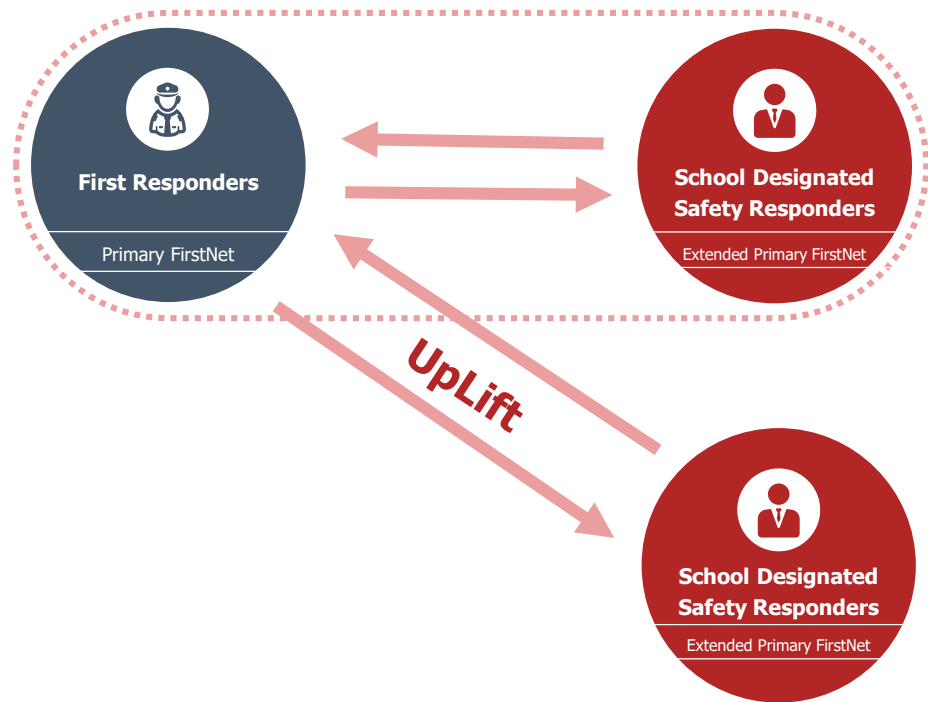
The Gold Standard Equation (Fast)



THERE IS VIRTUALLY NO LIMIT TO HOW MANY INDIVIDUALS PLAY A ROLE IN A FACILITY'S SECURITY POSTURE. TO VARYING DEGREES, SECURITY IS EVERY PERSON'S RESPONSIBILITY

(1) Reliable Network & Interoperability

- AT&T FirstNet Network
- Priority and Pre-emption
- Interoperability



ENHANCING SCHOOL SAFETY



™

In a time of crisis, communication is critical. FirstNet is the nationwide public safety communications network, services and solutions dedicated to first responders including school resource officers and campus police.

CONNECTED IN A CRISIS



"Communication is the absolute number one priority when it comes to security for us. FirstNet was the obvious choice. It provides the reliable communications we need to stay connected to first responders and each other. And it's critical in a crisis - when the lines are overwhelmed."

Mike Matranga
Executive Director Security
Texas City ISD



[Watch video](#)

YOUR RELIABLE SOLUTION

SAFETY



First Priority™

**Dedicated
Network**



**Expanded
Coverage**



FirstNet Ready™

**Purpose-built
Devices**



**Custom
Services**



**Security
& ICAM**



FirstNet Certified™

**Apps &
Solutions**



FIRSTNET™

Built with AT&T

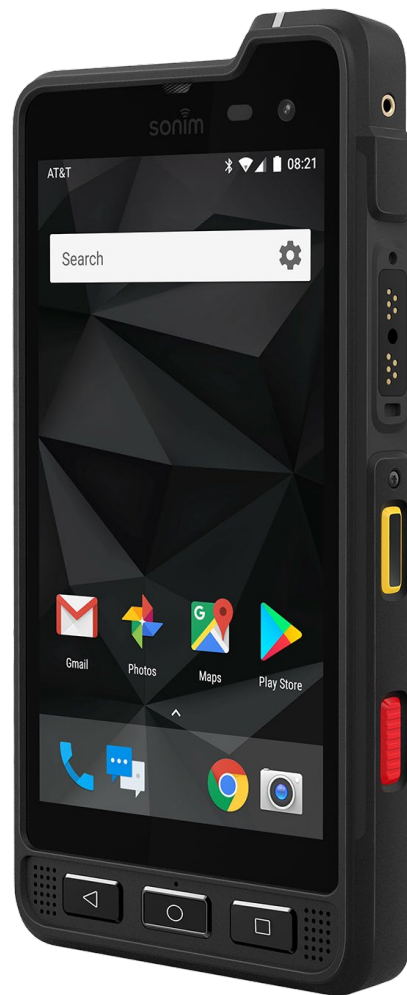
Sonim The World's **most reliable** **communication** **tools.**

Purpose built to the industry's toughest performance standards. And backed by a 3 year warranty.

Built in panic button and dedicated push to talk buttons

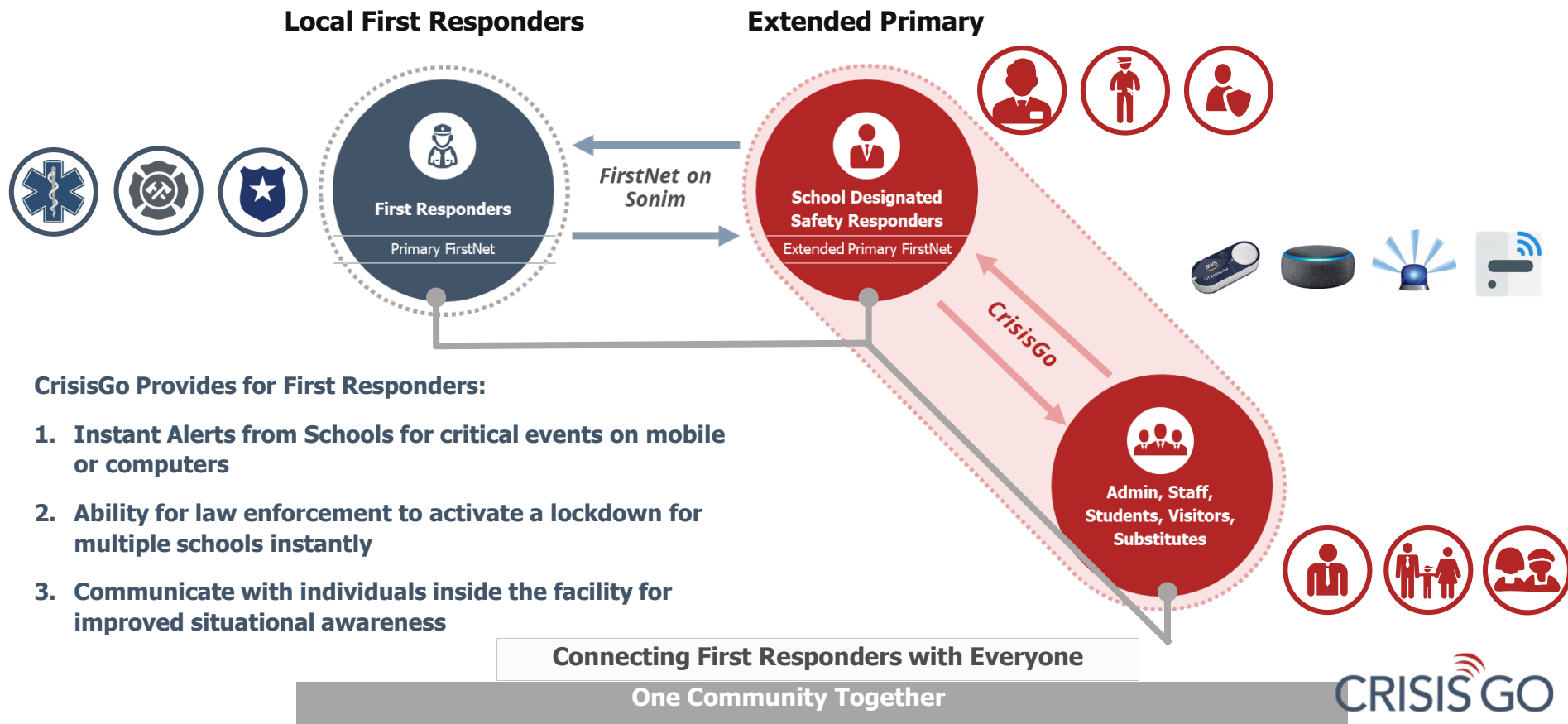
Built and Tested for the most reliable Mission Critical Networks in the Nation and FirstNet Certified

When the mission is critical and lives depend on communication, the solution is Sonim.

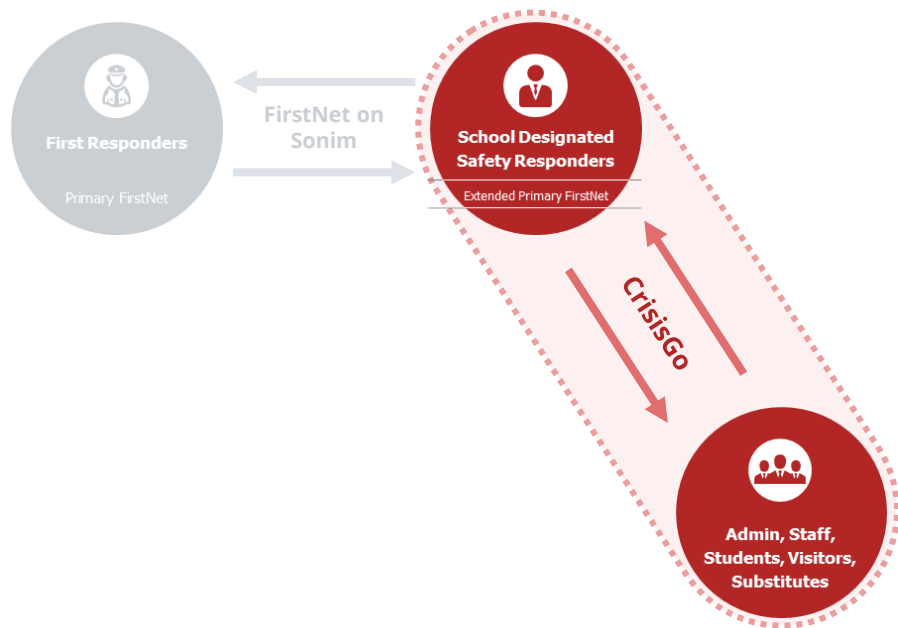


**Dedicated SOS
red alert button**

(3) Multi-Directional Alerting by People, Systems of Devices



(4) School 2-Way Communication and Workflow tools



CrisisGo Provides Schools with:

- * Alerting technology on Mobile and Desktops
- * 2-way real time communication
- * All hazard emergency plan on all devices
- * Actionable checklists
- * Staff Check in
- * Student Roster
- * Student Reunification

- * What devices will CrisisGo run on?
 - iOS, Android, MAC, PC, Chromebook
- * IoT devices for panic or call for help
- * Student Safe Companion App – Safe2SpeakUP
 - [CrisisGo School District Brochure](#)

(5) Immediate Execution of Emergency Plan



First Responders

Stop the Shooter

Assist the Injured

Evacuate the People



School Admin & Staff

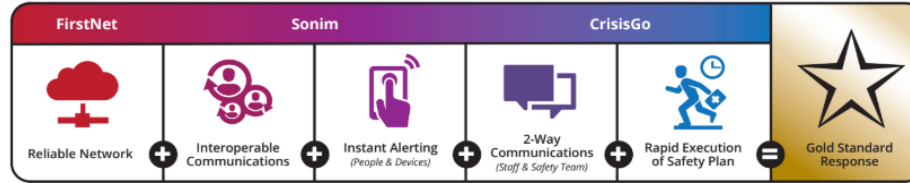
Avoid, Deny, Defend

Account for Staff

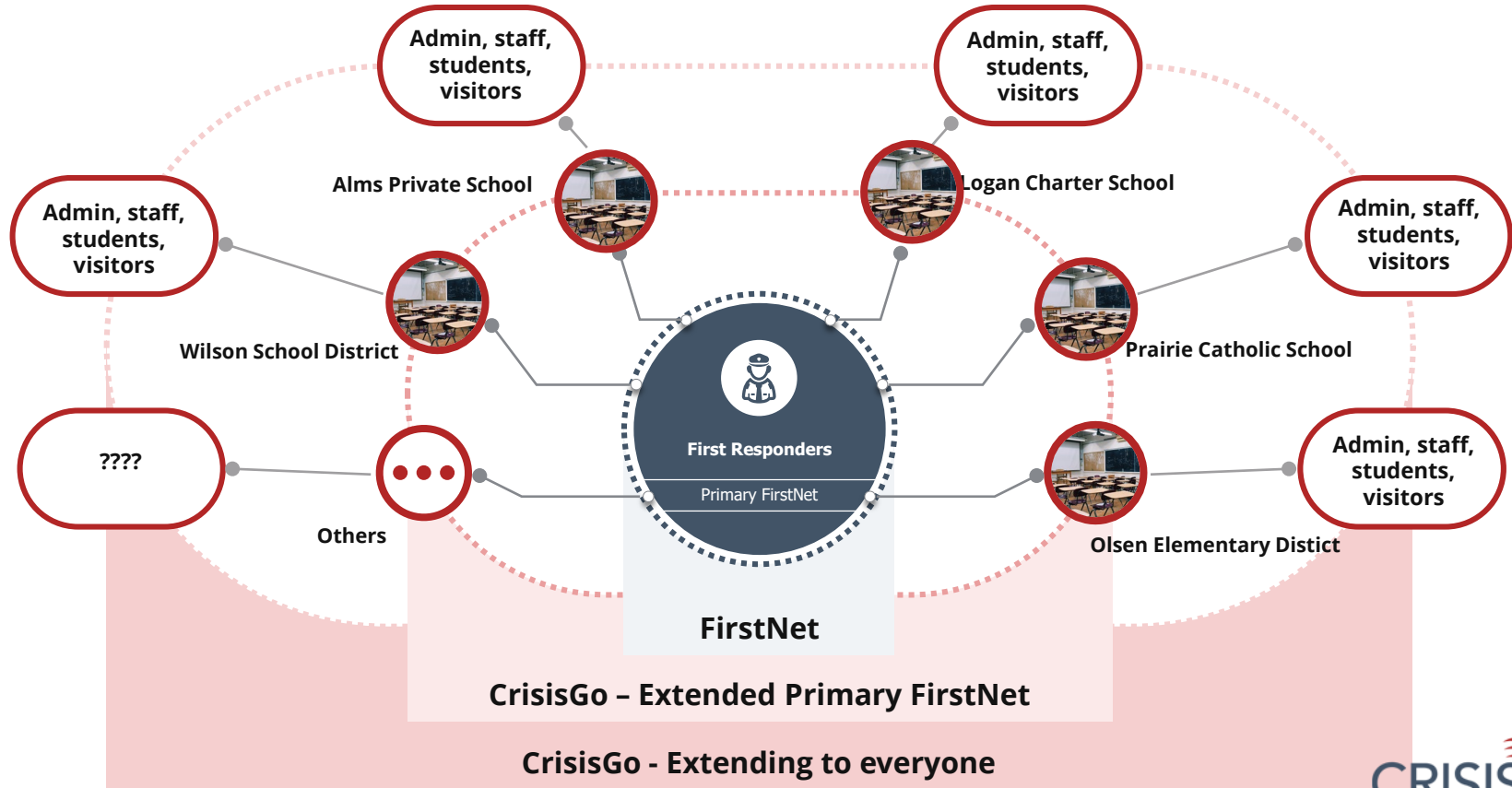
Account for Students

Reunite Students with Parent

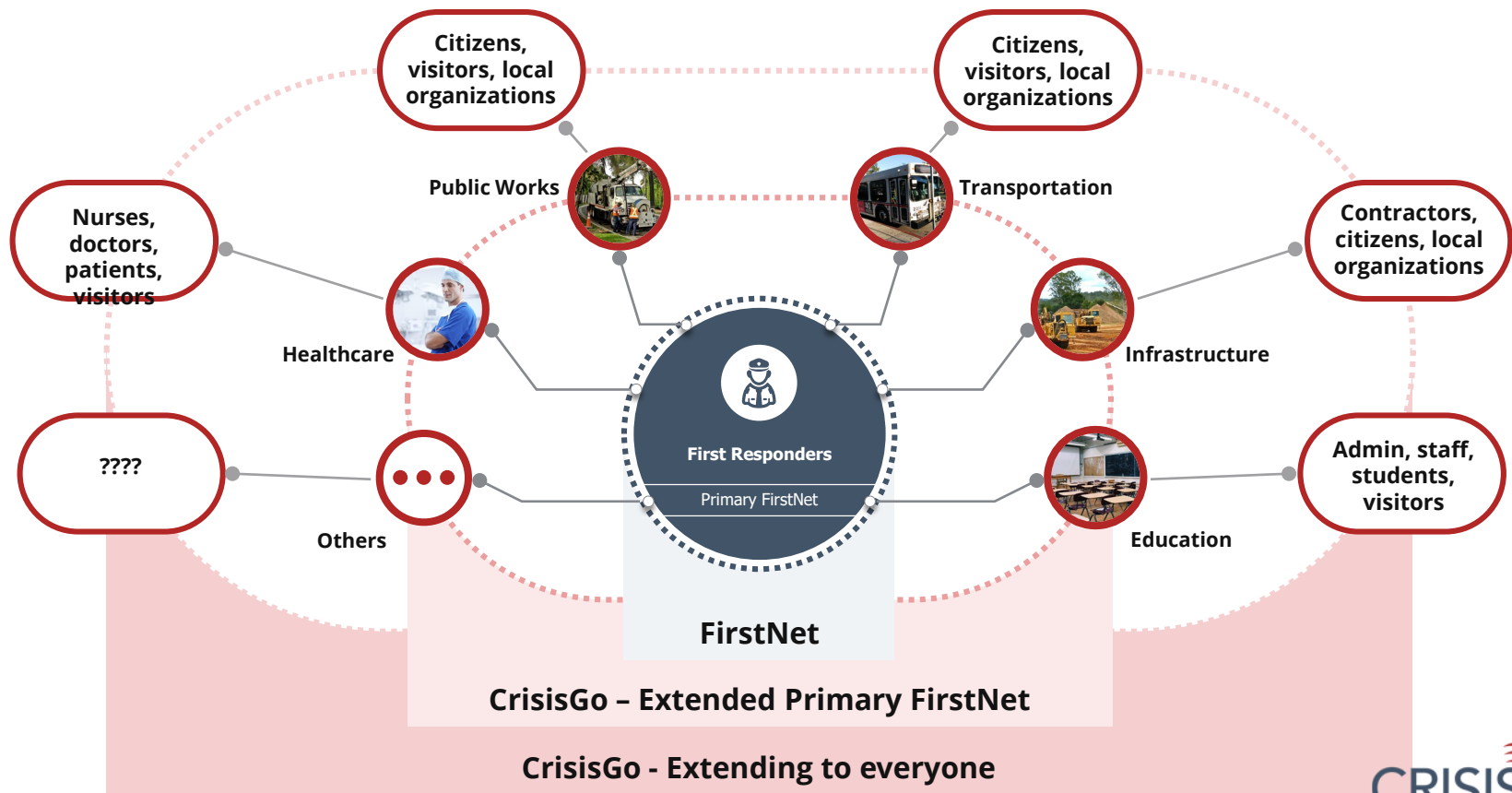
Keep Kids Safer Using the Gold Standard Response Equation



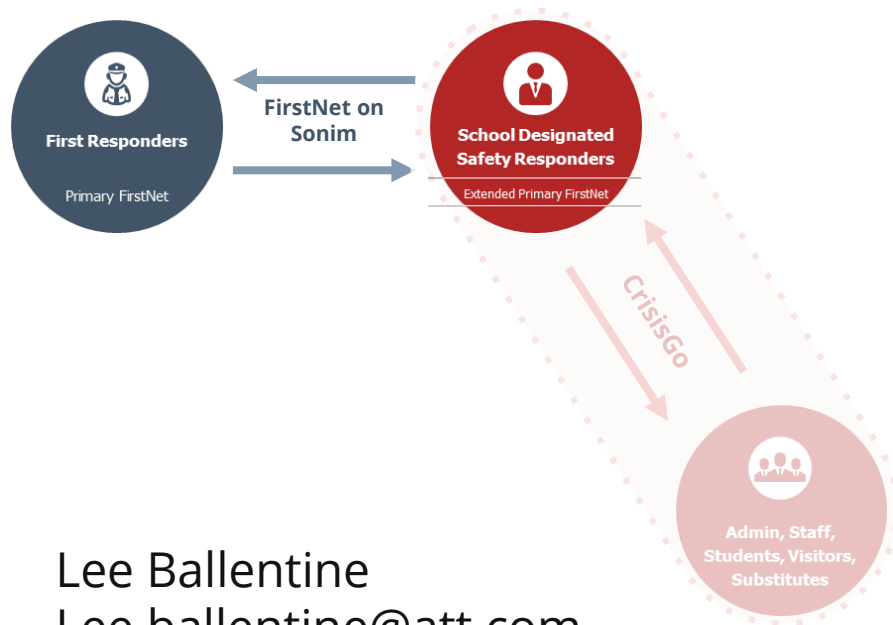
One School Community Together



One Community Together



FirstNet Action Steps



Lee Ballentine
Lee.ballentine@att.com

Sign up for FirstNet

The FirstNet community depends on local control administrators to monitor the privilege of access for their respective agency. They help preserve the advantages of the network for those who need it most—when they need it most.



1. Engage your FirstNet Solution Consultant



2. Complete FirstNet Agreement

- Affirms responsibility in ensuring the integrity of the network
- Initiates access to Local Control



3. Activate profile in Local Control with password

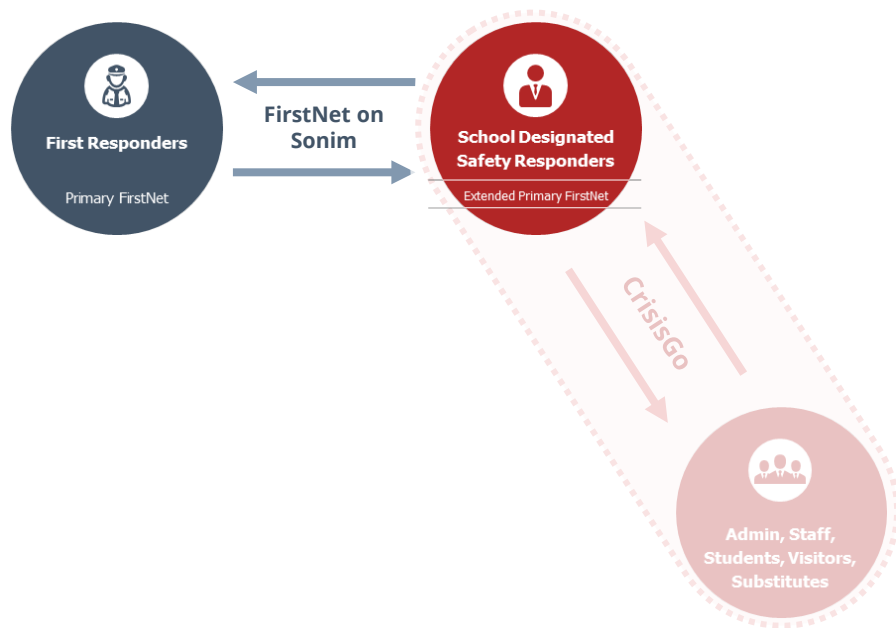
- Access will be received via email



4. Verify and manage eligible individuals

- Continue to regularly manage ongoing eligibility through audits

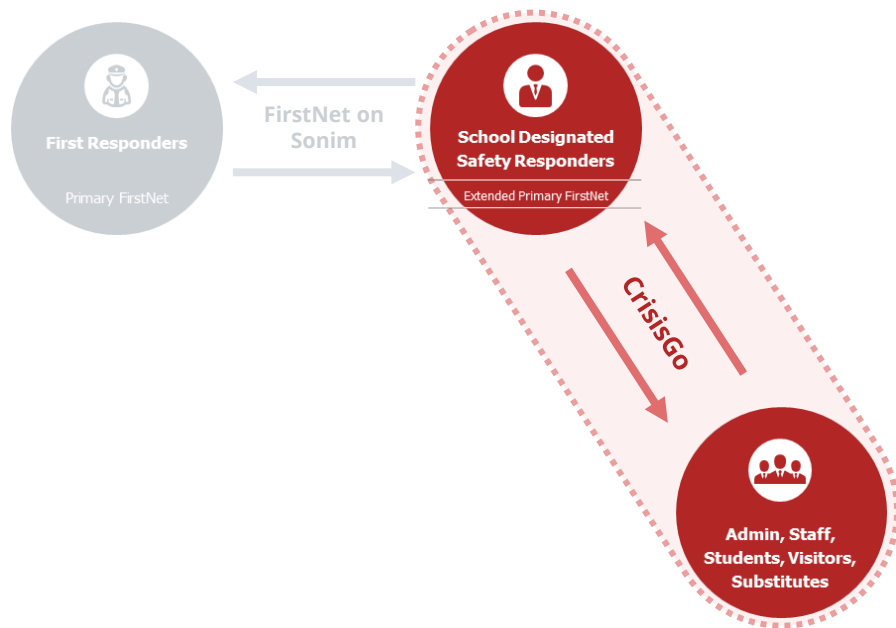
First Responders – Smart Safe Community Next Steps



First Responder - CrisisGo

1. Learn more about how your community can deploy a powerful alerting and emergency communication system
2. Invite your community organizations to a demo of CrisisGo.
3. Sign up for a demonstration by:
 1. Call 314-669-9022
 2. www.crisisgo.com/demo
 3. Email sales at: salesinfo@crisisgo.com

School Districts– Next Steps with CrisisGo



Participation on CrisisGo

1. Signup for a demo of at www.crisisgo.com/demo
2. Choose the Sonim [free](#) plan or full suite paid plan
3. Complete the terms of service document
4. Attend a kickoff meeting for Activation when choosing the paid plan

* What is the cost?

- Average, compared to existing plans, easy way to describe it?
- Full Suite \$1,150 per school per year

* What devices will CrisisGo run on?

- iOS, Android, MAC, PC, Chromebook

* Is there a student companion app?

- Yes, Safe2SpeakUP is available and is COPPA compliant.

* Are there any materials we can use to share with our constituents?

- [CrisisGo School District Brochure](#)

CRISIS GO