

SUCCESS STORY

simplecloud
aecm

Powered by



Sach Consulting is a company with extensive experience in providing consulting, partial project management and turnkey project management services. Thanks to the use of innovation, creative thinking, technology, and the company's specially designed methodology that focuses on client satisfaction, Sach Consulting is able to deliver high quality projects, meet deadlines and cut costs for clients.

Sach Consulting specializes in **Project Management, Construction Management and BIM Project Management** and focuses on architecture, construction, planning, environmental services and sustainability.

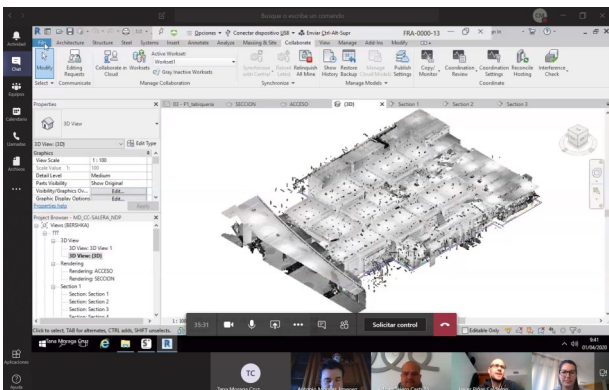


Leticia Saucó
CEO & Founder of Sach Consulting

THE CHALLENGE

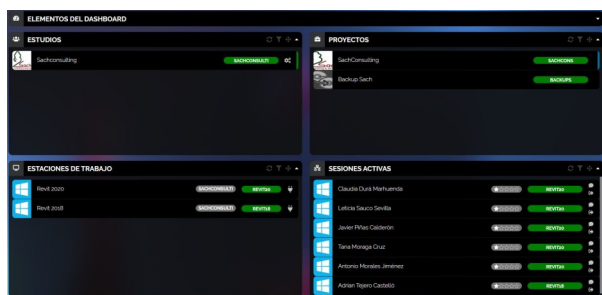
Due to the current situation following the confinement measures implemented as a result of the global **Covid-19** pandemic, the studio has had to continue to provide services to its clients whilst still looking for new business opportunities.

As we specialize in project management, it is very important that we are able to connect to our clients in real time in order to provide them with status updates during each stage of the project. It is also important for all the team members who are working on a project to be able to interact and collaborate so we can provide solutions to different risks quickly, offer working solutions, etc. To do this, we had to make our project information **available at all times using a secure site that could be accessed by anyone, anywhere**. We needed a tool to help us **work remotely, collaboratively and securely** to continue our business operations.





THE SOLUTION



After several failed tests using different VPN options, the solution was clear.

SimpleCloud AECM, has enabled the entire **Sach Consulting** team to continue to work from home in a **collaborative, secure** and **flexible** environment using virtual workstations with graphics capabilities in **virtual offices** using their own computers and normal work tools, as well as new ones.

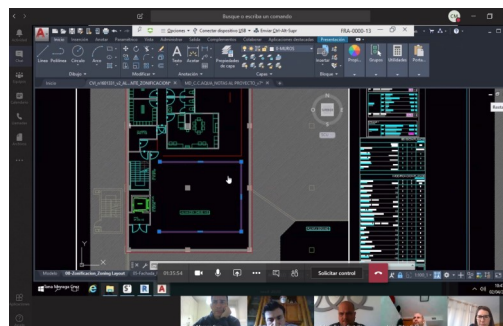
SimpleCloud is a cloud-based global platform that enables users to manage and create digital content, operates both within the cloud and in hybrid environments and has been developed for the **architecture, construction, engineering, manufacturing, project management** and **BIM project management** industries.

*"SimpleCloud has enabled the entire **Sach Consulting** team to continue to work from home in a collaborative, secure and flexible environment".*

Leticia Sauco
CEO & Founder of Sach Consulting

THE RESULT

During these times, we are changing the internal processes and methodologies we use to work on and manage our projects in order to be more efficient and to continue to provide services to all our clients via a **virtual** office by creating and generating documents with drawings, reports, measurements, work planings, etc. We can do all this thanks to the cloud-based platform **SimpleCloud**, which has enabled us to work with tools such as **AutoCAD, Revit, Presto, Cype Software, NavisWorks, Microsoft project, Microsoft Team** and **Bim360**.



simplecloud

Contact us for a demo info@simplecloud.io
or call us + 34 689 388 348 (EMEA)
or + 1 (310) 990 6390 (Americas)



simplecloud
animation

simplecloud
video games

simplecloud
aecm

simplecloud
education



SimpleCloud - info@simplecloud.io - www.simplecloud.io