

Technical Parameter

| Type | KSCAN20 | KSCAN20-PB | KSCAN20-EG | KSCAN20-PBEG | |
|------------------------------|---|-------------------|-------------------|-------------------|----------|
| Red laser | 14 laser crosses + 1 extra laser | | | | |
| Blue laser | 5 parallel laser lines | | | | |
| Resolution | 0.01mm | 0.01mm | 0.01mm | 0.01mm | |
| Accuracy | 0.02mm | 0.02mm | 0.02mm | 0.02mm | |
| Build-in photogrammetry | √ | √ | √ | √ | |
| Volumetric accuracy | 0.035mm/m | 0.035mm/m | 0.035mm/m | 0.035mm/m | |
| Scanning area | up to 550x600mm | | | | |
| Depth of field | up to 550mm | | | | |
| Stand-off distance | 200-420mm | | | | |
| Laser class | CLASS II (eye-safe) | | | | |
| Measurement rate | 650000 measures/s | 650000 measures/s | 650000 measures/s | 650000 measures/s | |
| Probing | Function module | - | √ | - | √ |
| | Single point repeatability | - | 0.03mm | - | 0.03mm |
| Intelligent edge inspection | Function module | - | - | √ | √ |
| | Edge accuracy | - | - | 0.03mm | 0.03mm |
| Pipe inspection | optional | optional | optional | optional | |
| High-precision reference bar | Function module | optional | optional | optional | optional |
| | Volumetric accuracy | 0.02mm/m | 0.02mm/m | 0.02mm/m | 0.02mm/m |
| Output formats | .ply、.obj、.igs、.stl、.stp、.fbx、.wrl、.xyz、.dae、.ma、.asc, (customizable) | | | | |

SCANTECH
3D Digitization Expert

KSCAN
3D SCANNER

Dual Laser mode

Photogrammetry

Probing





Unlimited Measuring Range

KSCAN has built-in photogrammetry system. The accuracy reaches 0.02mm and the volumetric accuracy is up to 0.035mm/m. It can individually achieve high accurate 3D measurement range from 0.02m to 10m.



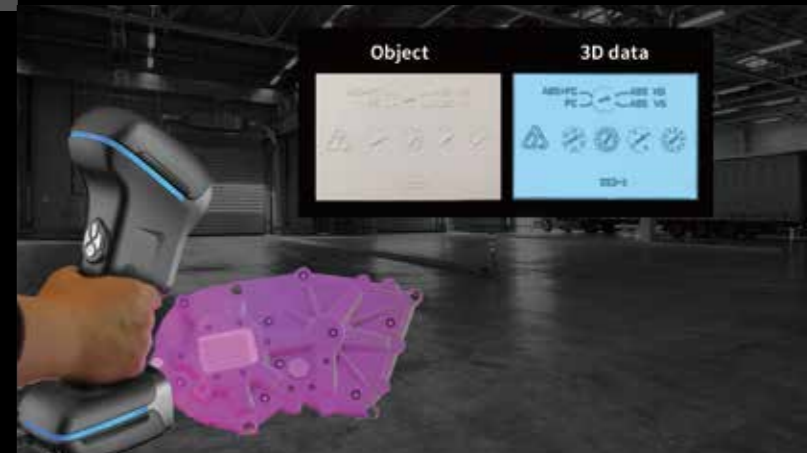
Probing

KSCAN can quickly obtain accurate 3D data with probing and satisfy strict measuring requirements.



Incomparable Resolution

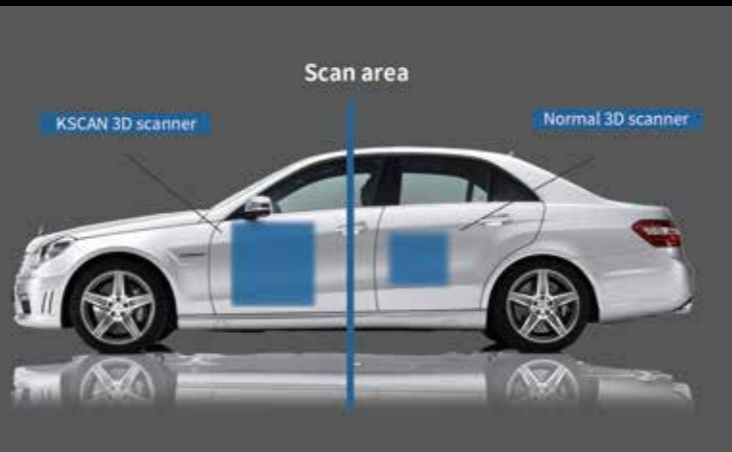
Dual laser scan mode are freely switched. Ultra-high resolution easily captures the texture data of a coin. The resolution is up to 10µm.



KSCAN

KSCAN 3D Scanner integrates photogrammetry function and dual laser scan mode which are global initiative technologies. The built-in photogrammetry function greatly expands the scan area and improves volumetric accuracy. KSCAN combines high efficiency and ultra-detail benefitting from dual laser scan mode. Moreover, KSCAN offers practical solutions targeting at objects range from 0.02m to 10m.

KSCAN supports probing that can correctly acquire the 3D data of hole, plane, edge, etc. KSCAN can fulfill different measurements and analysis functions such as pipe measurement, deformation detection and 3D inspection with 3D software---ScanViewer, which conducts effective, reliable and full-scale 3D measurement technologies for product design and inspection professionals.



Higher Efficiency

KSCAN upgrades in speed and scan area, which greatly reduces cost of device, time and labor.



High volumetric accuracy



Probing



Resolution Up to 10µm



Edge inspection

Multi-functional 3D Software

KSCAN can work with ScanViewer to fulfill different inspection functions such as pipe measurement, deformation detection and GD&T.

