

# API Management

Lars Fanebost  
IBM



# Important Disclaimers

IBM's statements regarding its plans, directions and intent are subject to change or withdrawal without notice at IBM's sole discretion. Information regarding potential future products is intended to outline our general product direction and it should not be relied on in making a purchasing decision. The information mentioned regarding potential future products is not a commitment, promise, or legal obligation to deliver any material, code or functionality. Information about potential future products may not be incorporated into any contract. The development, release, and timing of any future features or functionality described for our products remains at our sole discretion

# Trademark Acknowledgments

- IBM, IBM API Connect, IBM DataPower Gateway are trademarks of International Business Machines Corporation, registered in many jurisdictions
- Other company, product and service names may be trademarks, registered marks or service marks of their respective owners. A current list of IBM trademarks is available on the web at "Copyright and trademark information" [ibm.com/legal/copytrade.html](https://ibm.com/legal/copytrade.html)

# Agenda

- IBM's API offering and future of APIs
- News
- Continuous Innovation, Cluster Management, Flexible licensing and deployment
- Become a champion with help from IBM

# What is IBM API Connect?



IBM **API** Connect

## The Scalable Multi-Cloud API Platform

A complete, modern and intuitive API lifecycle platform to create, securely expose and manage APIs across clouds to power digital applications



### Create

Automatically create and test APIs to expose data, microservices, enterprise applications and SaaS services.



### Secure

Easily apply built-in and extensible policies to secure, control and mediate the delivery of APIs with unmatched scale.



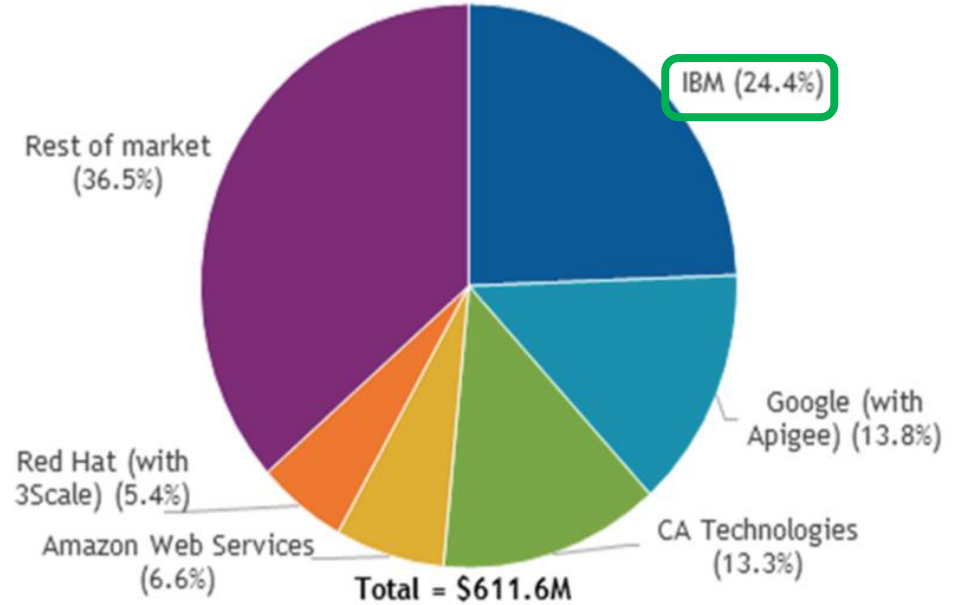
### Manage

Rapidly publish, lifecycle govern, socialize, analyze, monitor and monetize APIs with built-in capabilities.

# IBM API Connect: Ranked #1 in API Management

- **Ranked #1** in market share with nearly double the share of the next closest vendor (IDC June 2018)
- **Trusted** by enterprises of all sizes across industries and geographies

**Worldwide API Management Revenue Share by Vendor, 2017**



Source: IDC, 2018

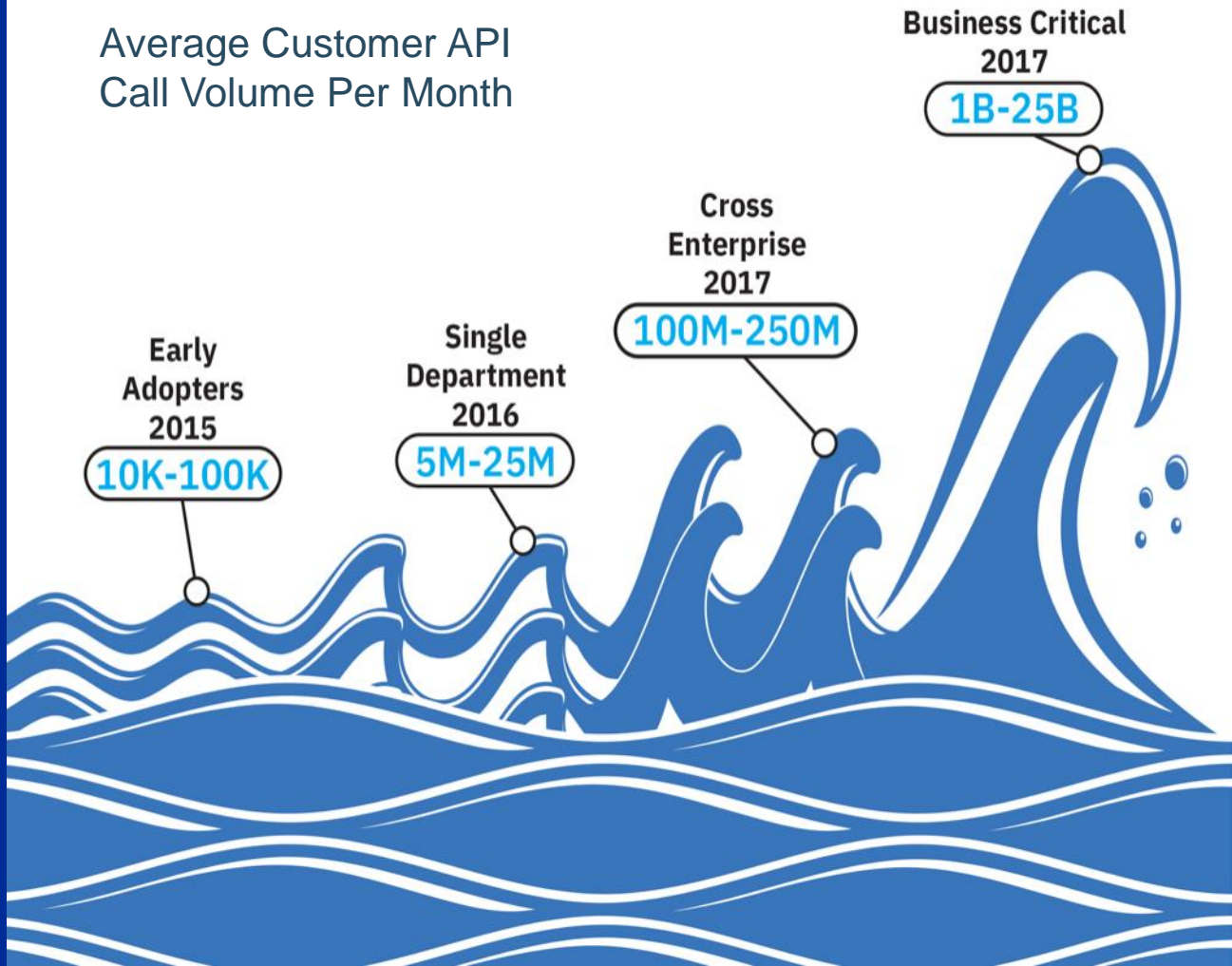
[Learn more](#)

# API Initiatives are Exploding

API-centric businesses have become the norm.

APIs have become business critical

Average Customer API Call Volume Per Month



# v2018: Scale & Flexibility with Multi-Cloud Design

## API Connect

- Unmatched scalability and performance via new Microservices & container based design
- Independently & automatically scale API Connect 30+ microservices based on SLAs
- DevOps ready with 400+ REST APIs & CLIs for CI/CD
- Run virtually anywhere with agnostic Container/K8s & VMware support
- Native OS developer toolkit & enhanced UX to create APIs in minutes

## API Gateway (DataPower)

- Enterprise proven gateway distributed, clustered & co-located with provider backends
- Up to 5X performance using new API Gateway service
- Improved operational resiliency during API manager maintenance & unavailability periods
- Automatically scale gateways without manual registration in API manager node
- Autonomic gateway cluster management to self-heal without manual intervention
- Up to 2X Performance with X2 appliance

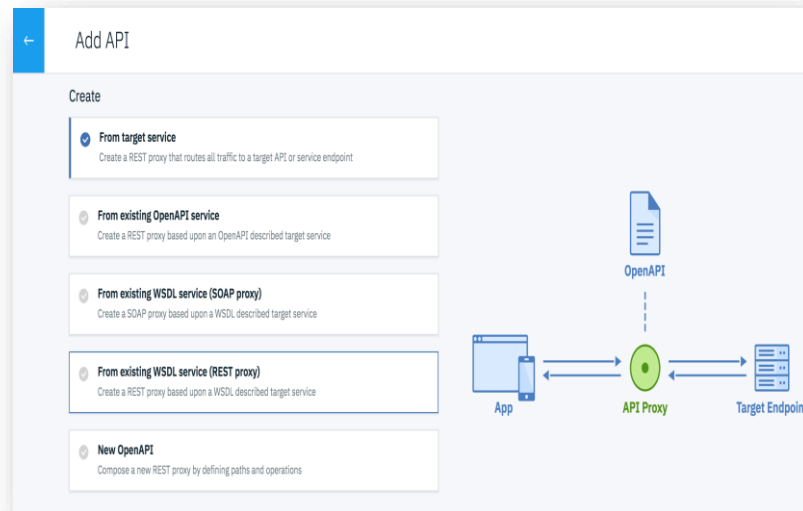


# Agenda

- IBMs API offering and future of APIs
- **News**
- Continuous Innovation, Cluster Management, Flexible licensing and deployment
- Become a champion with help from IBM

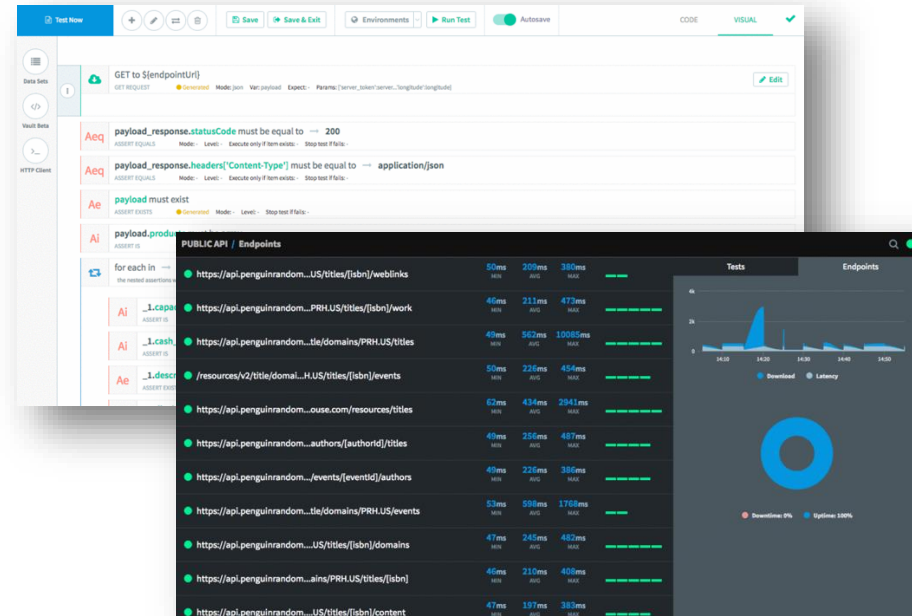
# What's New in 4Q 2018

- Address enterprise deployment guidelines for production through Long Term Support (LTS) release
- Accelerate on-boarding and attract API Consumers through integration with Social identity providers
- Enhanced API enforcement through drag & drop built-in policies unleashing the power of the gateway for security, traffic control and mediation
- Upgrade to v2018 from v5 through automated and step by step scripts
- Rapid API development with an simplified UX improving developer productivity



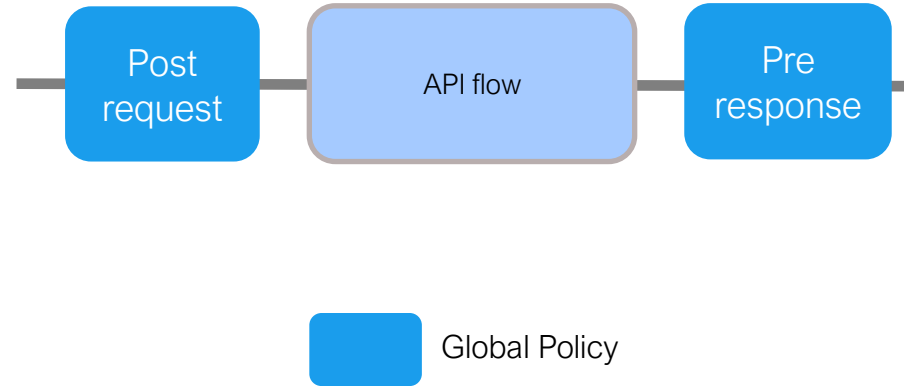
# New: Expanded API Lifecycle with Test and Monitor

- Automated API testing and monitoring designed for developers and teams
- No code necessary, visual composer to create tests in <1 minute
- Integrate into CI/CD processes for testing automation using pre-built plugins like Jenkins
- Continuous performance & behavior monitoring of APIs deployed anywhere in the world
- Rich monitoring dashboards & test reports to provide granular insights and easy diagnosis of any errors



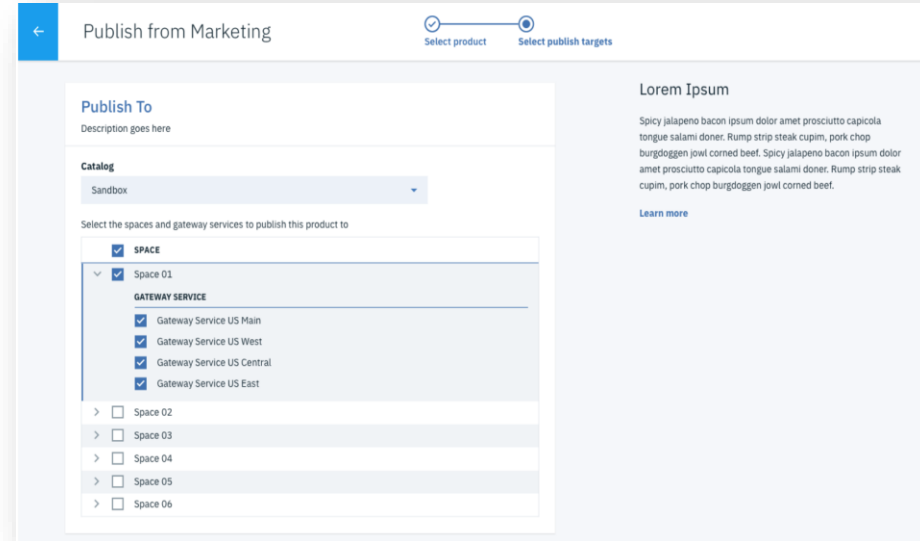
# New: Global Policies for Corporate Governance

- **Enforce corporate standards** and centralize governance with common security and logging policies without impacting API development
- **Flexible security permissions for deploying global policies**, enabling CSO / security professionals additional access control and flexibility
- **Accelerated definition** as it follows the same assembly constructs of that within the API



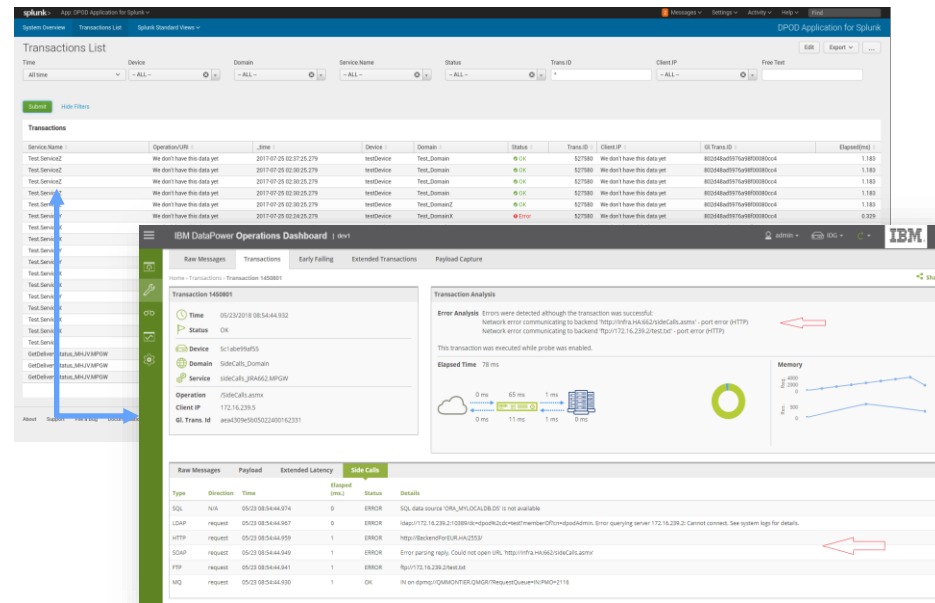
# New: Enhanced API Publishing Control

- Blue/Green deployment support out of the box for new API versions with ease
- Granular control to selectively publish APIs to specific gateways providing flexibility for multiple line of business operation



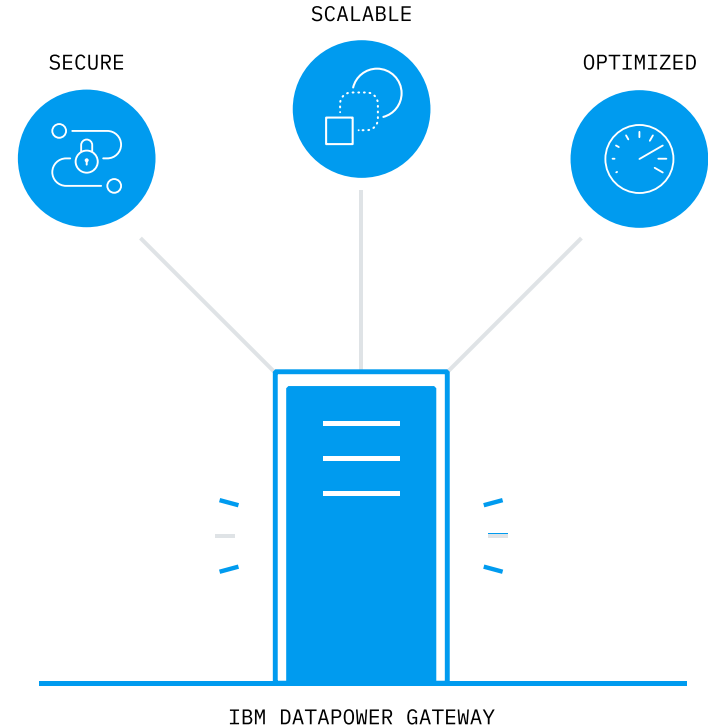
# New: Optimize Ops with DataPower Operations Dashboard

- Resolve issues rapidly with integration into enterprise Application Performance Monitoring
- Identify problem and perform root cause analysis by traversing between APM and DPOD
- Reduce your Splunk licensing costs with the Splunk plugin as DPOD manages the data and provides integration in to Splunk



# New: DataPower API Gateway Service

- **Secure to the core** with self-contained signed & encrypted image to minimize risk, plus proven security policies to quickly protect APIs
- **Up to 5X increased performance** with natively built API Gateway using purpose-built technology for native OpenAPI/Swagger REST and SOAP APIs
- **Multi-cloud scalability and extensibility** to help meet SLAs and improve client user experience
- **Optimized drag & drop built-in policies** fully unleash the power of the gateway for security, traffic control and mediation including flexible OAuth, enhanced JSON & XML threat protection



# Agenda

- IBMs API offering and future of APIs
- News
- **Continuous Innovation, Cluster Management**
- Become a champion with help from IBM



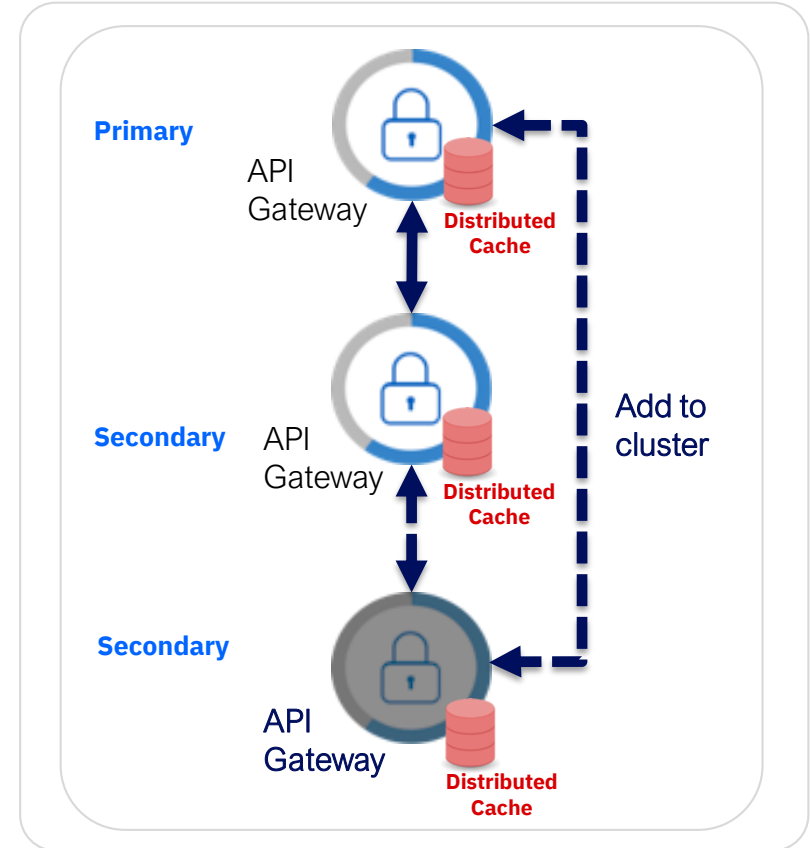
# API Connect V2018: Continuing Innovation across API Lifecycle

- **Control visibility and share resources** such as gateways, user registries, etc for greater governance and control
- **Email Templates** for notifications including invites and tasks for customization to match corporate branding
- **Associate Analytics to specific Gateway services** to manage latency between them
- **Role Based Access Control** extended to Cloud & Consumer orgs for granular control
- **Federated User Registry** support providing flexibility to associate multiple identity management systems
- **New API Security policy definition** at the catalog-level reducing API development complexity & simplifying user experience
- **Enhanced TLS Profiles** such as ciphers for fine grained control
- **Catalog Properties and Space Properties** to control environment specific variations

and much more ...

# Dynamic & Autonomous Gateway Cluster Management

- Gateways can scale without manual registration in API manager node, unleashing exciting new topologies
- Autonomic Gateway cluster management will allow Gateways to self-heal without manual intervention
- Gateways contact peers within cluster to obtain runtime information
  - Rate Limit
  - API definitions
  - Subscriptions



# API Connect: Flexible licensing and deployment



## Deployment

### *Deploy where it's most convenient for you*

- Deploy on IBM Cloud
- Deploy to 3<sup>rd</sup> party clouds
- Deploy on-premises



## Licensing

### *Pay only for what you need*

- Subscription (API calls/year)
- Perpetual (per PVU, unlimited API calls)



IBM API Connect

Number of APIs & API Products	Unlimited
Number of API Application Developers	Unlimited
Cloud infrastructure on IBM Cloud	Included
Data transfer on IBM Cloud	Included

# Agenda

- IBMs API offering and future of APIs
- News
- Continuous Innovation, Cluster Management, Flexible licensing and deployment
- **Become a champion**

# Let IBM Cloud Labs help you with your API Journey

## API Connect Architecture Blueprint Workshop

*Fully interactive customized workshop for your industry and business, focusing on defining an architecture blueprint for deploying IBM API Connect*

### *Outcomes :*

- Identify business drivers and discover use cases for APIs
- Develop API Connect deployment architecture
- Identify deployment options for your requirements
- Define API environments required for your organization
- Define security for APIs base on use cases
- Receive an Architecture Blueprint with architectural decisions ready for implementation
- Define next steps for implementation to meet your business objectives

## Let IBM Cloud Labs help you with your API Journey

### API Design Thinking Workshop

*Using IBM Garage Method to align Business and IT leaders to develop a cohesive strategy to identify and expose APIs for business growth*

#### *Outcomes :*

- Identify business drivers and use cases for APIs using IBM Design Thinking
- Define business hypothesis for API monetization
- Minimum Viable Product (MVP) statement and scope & architecture for first APIs
- Develop architecture and topologies
- Develop high level plans and next steps to meet your business objectives
- Receive a workshop outcomes deck capturing insights from the workshop, key business and architectural decisions



API architecture to securely unlock existing IT assets and to deliver innovative applications with modern architectures.

Architecture elements of an effective API management platform support the enterprise's API strategy and its roadmap for digital transformation..

### Address Common Business challenges

- Securely unlock existing business data, applications, and services to drive digital transformation in your enterprise.
- Support new business models with APIs.
- Enable agility and innovation by supporting a new application ecosystem and by enabling multi-speed IT.

