

PARTNERS



DATA-DRIVEN BUSINESS
TRANSFORMATION

INTEGRATION DAYS 2019
- JOURNEY TO THE CLOUD

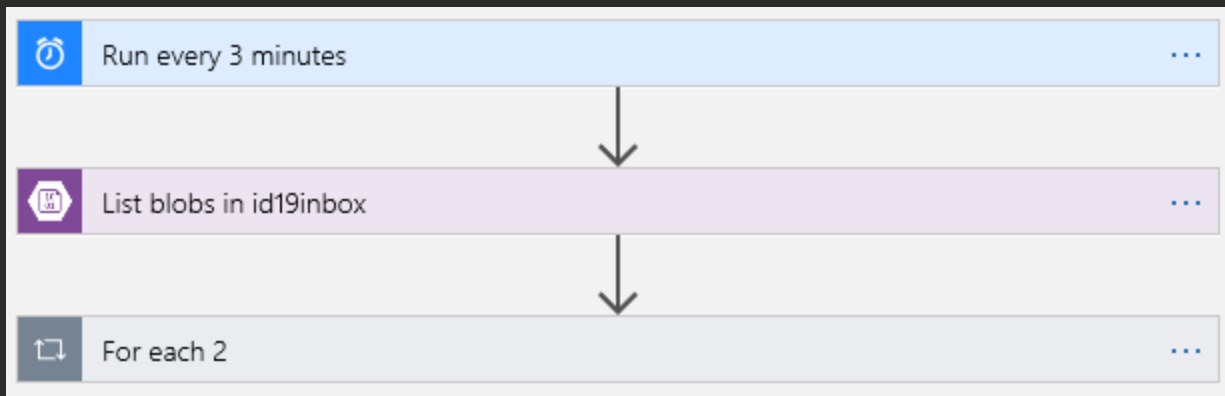
AZURE LOGIC APP INTEGRATION REALITY



AZURE LOGIC APP



The logic app is a PaaS executable workflow definition



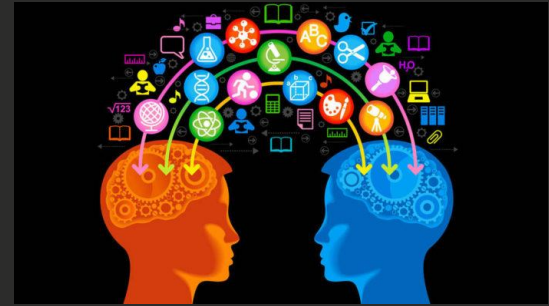


PERSPECTIVE

As a integration solution architect at Enfo I :



THINGS I LIKE



Run every 3 minutes

Interval: 3 Frequency: Minute

Add new parameter

List blobs in id19inbox

Folder: /id19inbox

Paging Marker: A marker that identifies the portion of the list to be returned with the

Flat Listing: Yes

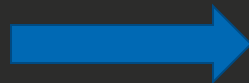
Connected to id19blobconnector. [Change connection.](#)

For each 2

Select an output from previous steps: value

Send an email

Add an action



Run every 3 minutes

INPUTS

Frequency: Minute

Interval: 3

List blobs in id19inbox

Folder: /id19inbox

Show more

OUTPUTS

```

value
{
  "Id": "3F3naaQoM4uYw943T3qso1YzK1Vj2yb1tFVwNwvyZyt1a8uZ6",
  "Name": "Björn Hackberg blob.docx",
  "IsUpdatable": "Björn Hackberg blob.docx",
  "Path": "/id19inbox/Björn Hackberg blob.docx",
  "LastModified": "2019-01-29T22:52:58Z",
}

```

For each 2

Send an email

To: bjorn.hackberg@enfo-group.com

Subject: id19

Body: Björn Hackberg blob.docx is the name of a file in id19inbox

OUTPUTS

Status code: 200

Headers

Key	Value
Pragma	no-cache
x-ms-request-id	ca78bb64-ac17-45a2-a243-e2f...
Strict-Transport-Security	max-age=31536000; includeSub...


```
42     "list_blobs_in_id19inbox": [  
43         "Succeeded"  
44     ]  
45 },  
46 "type": "Foreach"  
47 },  
48 "list_blobs_in_id19inbox": {  
49     "inputs": {  
50         "host": {  
51             "connection": {  
52                 "name": "@parameters('$connections')['azureblob']['connectionId']"  
53             }  
54         },  
55         "method": "get",  
56         "path": "/datasets/default/foldersV2/@{encodeURIComponent(encodeURIComponent('JTJmaWQxOWluYm94'))}",  
57         "queries": {  
58             "nextPageMarker": "",  
59             "useFlatListing": true  
60         }  
61     },  
62     "metadata": {  
63         "JTJmaWQxOWluYm94": "/id19inbox"  
64     },  
65     "runAfter": {},  
66     "type": "ApiConnection"  
67 }  
68 },  
69 "contentVersion": "1.0.0.0",  
70 "outputs": {},  
71 "parameters": {  
72     "$connections": {  
73         "defaultValue": {},  
74         "type": "Object"  
75     }  
76 },  
77 "triggers": {  
78     "Run_every_3_minutes": {  
79         "recurrence": {  
80             "frequency": "Minute",  
81             "interval": 3  
82         },  
83         "type": "Recurrence"  
84     }
```

For You All Built-ins **Connectors** Enterprise Custom

Service Bus

Twitter

Office 365
Outlook

SharePoint

FTP

Dynamics
365

SFTP

Triggers **Actions**

- When a booking is made (preview)**
10to8 Appointment Scheduling
- When there is a new contact (preview)**
Act!
- When an asset is added (preview)**
Adobe Creative Cloud
- When an asset is updated (preview)**
Adobe Creative Cloud
- When there is a new review (preview)**
Appfigures
- When a project is created**
Asana

For You All Built-ins **Connectors** Enterprise Custom

Service Bus

SQL Server

Office 365
Outlook

Azure Blob
Storage

Text
Analytics

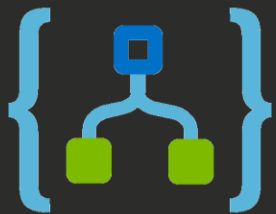
10to8
Appointment

Act!

Triggers **Actions** See more

- Ally
- Send news to your organization (preview)**
Ally
- Get rows (preview)**
Amazon Redshift
- Get row (preview)**
Apache Impala
- Get rows (preview)**
Apache Impala
- Get my products (preview)**
Appfigures
- Decode AS2 message**
AS2

BEFORE YOU START



A bit of structure

- Naming conventions
- Logging framework
- Resource group strategy
- Design patterns

WHAT COULD POSSIBLY GO WRONG?

It's all about the details:

- White listing of IP-ranges. Ranges are the same for different resource groups for logic apps, but not for Azure Functions.
- Scaling – are you on the right app service plan?
- Users...
- Printers.....
- Encoding, encoding, encoding



TO KEEP THE ENCODING INSIDE THE LOGIC APP AFTER READING FROM FILE....

Get file content using path

*File path

Path x

Infer Content Type

No

Hide advanced options ^

Connected to sftp_swedbank_int0011. [Change connection.](#)

Set the “Infer Content Type” to “No”

THANK YOU

Headed in the same direction
– walk there together?

Björn Hackberg

Solution Architect
+46 708 771 698
Bjorn.Hackberg@enfogroup.com



[enfogroup.com](https://www.enfogroup.com)

enfo