

Why should you choose Office1?

The Office 1 Difference

Innovative, Custom Solutions

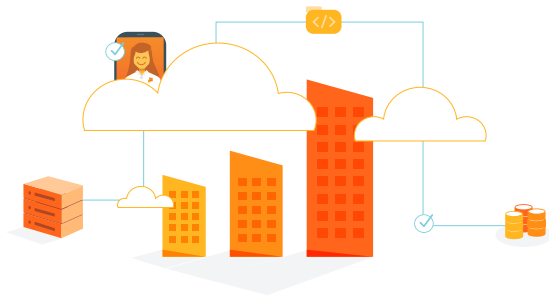
Our relationship starts with an **in-depth** discovery process of your business to get a **thorough** understanding of your needs. This leads to a **clear solution** unique to your specific company. Throughout our relationship, we'll keep this same mentality- **proactively** scaling with you to take your operations to the **next level**.

Fortified Security

If security is a big deal to you, it's a huge deal to us. We'll **secure** all parts of your network across all devices. Giving you **peace of mind** over all your company's sensitive data.

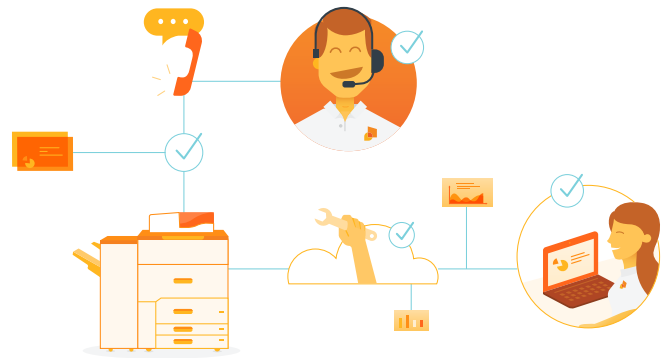
Optimize Operations

We'll work with your company to **identify** inefficient workflows and **create** ongoing solutions that make sense and are scalable to your business.



Your Start to Digital Transformation

With a wide array of the most **cutting-edge** technology at our disposal, we're able to give you what you need to ditch manual, paper systems and digitally transform your office with automated, **innovative** solutions to give you a **competitive edge** in the digital workplace.



Proactive Customer Service

It's simple, our **#1 goal** is our customers' **success**. We get to know the ins and outs of each company to set up a foundation for a **lasting partnership**. This stems from the proactive service model we've designed for our clients to provide them with remote, **24/7 customer service** and predictive technology that keeps each business running at **peak performance** at all times.

Learn More:

<https://www.office1.com>

