

STOREMASTA®

Drum Dolly with Handle for 205L Drum PSRDH004

Assembly Instructions



IDENTIFY



ASSESS



CONTROL



SUSTAIN



Tools required for assembly:

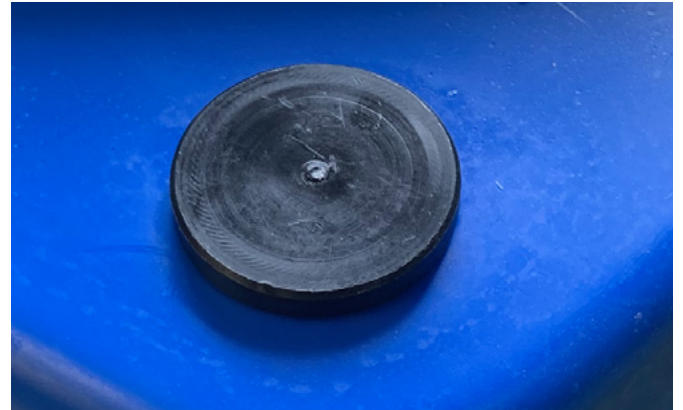
- 17mm spanner
- Rubber mallet
- 118mm spanner
- Half round file
- Rattle gun & 18mm driver



ID	DESCRIPTION	QUANTITY
1	Moulded Base	1
2	620mm wide Steel handle	1
3	66mm Machined Top Plug	2
4	58mm Machined Bottom Plug	2
5	110mm Machined Handle Spigot	2
6	100mm x 35mm Black PVC Swivel Cast	2
7	100mm x 35mm Black PVC Braked Swivel Caster	2
8	110mm Bolt	4
9	Wheel	4
10	M30 Galvanised Washers	4
11	55mm x 8mm Bolt	4
12	8mm Nyloc Nut	4

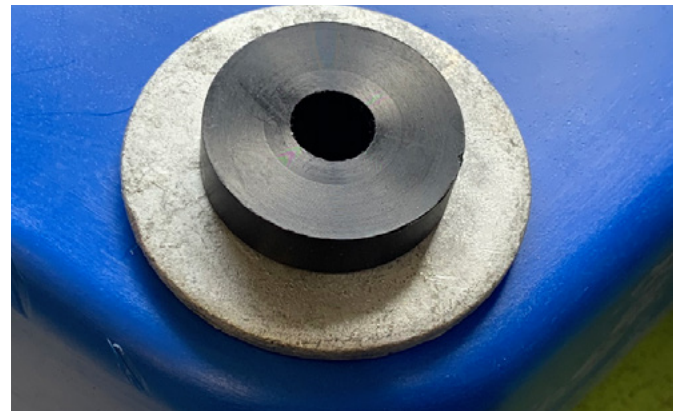
STEP 1

Place moulded base (1) on raised work surface with flat side down. Using the rubber mallet, knock two top plugs (3) into two adjacent holes in the base until flush.



STEP 2

Flip moulded base over. In the same holes as the two top plugs, place two M30 Galvanised washers (10) on bottom plugs (4), and tap into base until flush.



STEP 3

Remove wheels (9) from castors. Place the swivel castors (6) on the bottom caps and insert the 110mm bolt (8). Use the rattle gun to tighten the bolt until the caster does not wobble. Do not over tighten.



STEP 4

Slide the wheel (9) into the swivel castor (6). Insert bolt (11) through caster and wheel and screw on 8mm Nyloc nut (12) and tighten with 13mm spanner. Repeat the process for the other castor.



STEP 5

Set the base and handle up as shown on protective surface to avoid scratching. Ensure that the base is still upside down and the handle is facing outwards. Use the rubber mallet to hit the base (near or on the holes) until the handle just protrudes through the holes. Hit each side alternately.



STEP 6

Place M30 galvanised washer (10) onto handle spigot (5) then insert into the handle ends and use the mallet to knock it in until hard up against the metal and the base. Ensure that the base is sitting firmly on the handle spigots.



STEP 7

Remove wheels from braked castors. Place the braked swivel casters (7) on the bottom caps and insert the 180mm bolt (9). Use the rattle gun to tighten the bolt until the caster does not wobble. Do not over tighten.



STEP 8

Slide the wheel into the braked swivel castor (7). Insert bolt (11) through caster and wheel and screw on 8mm Nyloc nut (12) and tighten with 13mm spanner. Repeat the process for the other braked castor.

