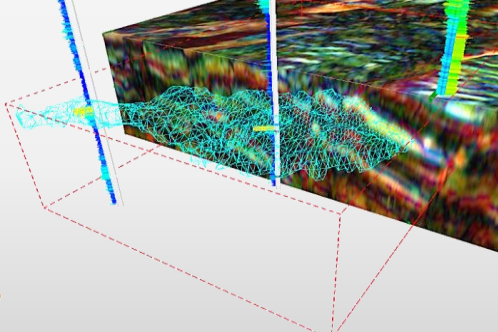


Global Webinar Series

Exploration & Production Workflows using
Cognitive Interpretation in GeoTeric



February 2017

Thursday 23rd

Duration:
30mins

Exploration & Production Part I

- Noise Attenuation & Prospect Screening

Register for [8:30am](#) (GMT)

Register for [3:30pm](#) (GMT)

March 2017

Thursday 30th

Duration:
30mins

Exploration & Production Part II

- Prospect Delineation & Fault Delineation

Register for [8:30am](#) (GMT)

Register for [3:30pm](#) (GMT)

April 2017

Thursday 27th

Duration:
30mins

Exploration & Production Part III

- 3D Prospect Interpretation & Seismic
Facies Classification

Register for [8:30am](#) (GMT)

Register for [3:30pm](#) (GMT)

Highly Intuitive

Enrich geological understanding and enhance your seismic interpretation using a software that is easy to learn & easy to use.

Adds Business Value

Using Cognitive Interpretation, GeoTeric will transform your decision making processes providing efficiency, accuracy and reduced risk.

Our virtual- education program

GeoTeric's team of highly experienced Geoscientists work together around the world to develop and deliver our monthly webinars. These webinars aim to provide the technical information you need to solve the interpretation challenges you face today.

Following registration you will be sent a link to the hosting session*. To avoid disappointment we advise you check your company's IT permissions for accessing GoToMeeting.

If you have problems accessing the registration links, please email Marketing@GeoTeric.com and specify the dates and times you want to register for.

*Please note, it may take up to 24 hours for your confirmation to come through.

Revolutionise your Seismic Interpretation

www.GeoTeric.com

