

## The COLUMBIA Technologies Way

Monetizing a real property asset challenged by environmental issues requires application of science and technology, data best practices, engineering expertise and collaborative teamwork to achieve the best business outcome. That is the COLUMBIA Technologies Way.

Founded in 1999, COLUMBIA Technologies creates high-value information assets through high-resolution assessment of contaminated land using proven, real-time investigative techniques that map subsurface contamination, track soil and groundwater changes and profile existing remediation systems. Backed by its 16-year track record, COLUMBIA Technologies goes beyond sophisticated site modeling and performance monitoring to become a trustworthy partner in formulating smarter sustainable solutions.

Clients can count on COLUMBIA Technologies to provide data-driven design and implementation that supports well-defined, measurable performance standards and metrics. That is the key to a sustainable long-term outcome.

### Why COLUMBIA Technologies?

COLUMBIA Technologies integrates the latest high-resolution data collection tools with world-class interactive reporting tools to optimize soil and groundwater remediation evaluation and design. This highly advanced toolset enables site managers to reduce the risk and uncertainty associated with cleanup of contaminated sites and can cut remediation costs substantially.

COLUMBIA Technologies' patented and proprietary **SmartData Solutions®** process delivers unique benefits to clients, including:

- An award-winning, browser-based solution for real-time data collection, analysis, visualization, mapping and tracking of soil and groundwater pollution of contaminated properties;
- Cloud-based platform, which integrates a range of site information into easy to interpret, GIS-based real-time decision making information that is captured in Remediation Focused Conceptual Site Models (RF-CSM);

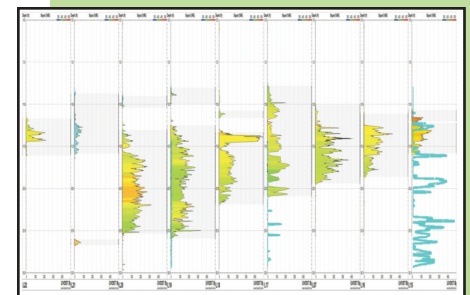
- Full browser-based interactive capability for to manipulate site characterization data;
- Ability to view the data as it is happening and ask questions while performing their own investigation and analysis; and
- Much faster budget and technical decision making.

COLUMBIA Technologies' full suite of high-resolution data collection tools, all of which are integrated into **SmartData Solutions®**, includes:

- **Membrane Interface Probe with Electrical Conductivity (MIP/EC)**, a multipurpose tool for mapping soil and groundwater contamination, specifically volatile organic compounds (VOCs), such as halogenated solvents and petroleum compounds, and for measuring soil electrical conductivity (EC).
- **Laser Induced Fluorescence (LIF)**, a Non-Aqueous Phase Liquid (NAPL) mapping tool used to delineate the depth and horizontal extent of free product and residual phase petroleum contamination.

## COLUMBIA Technologies' Solutions are Tailor-Made for:

- Global corporations with complex environmentally contaminated real estate; and large manufacturing companies;
- Army, Navy, Air Force and other Department of Defense sites;
- Federal agencies involved in large, complex cleanup challenges;
- State agencies that oversee underground storage tank (UST) cleanup programs;
- Large petroleum companies;
- Railroad corporations; and
- Environmental consultants/integrators that provide strategic and technical assistance to State and Federal cleanup programs.





## *Partnering for Smarter Sustainable Solutions*

- **Hydraulic Profiling Tool (HPT)**, direct pressure response measurements of hydraulic permeability and flow to determine migration pathways, remediation injection regions, and placements for monitoring wells.
- **Membrane Interface Probe-Hydraulic Profiling Tool (MiHpt)**, a combined MIP-HPT probe for mapping soil and groundwater contamination, specifically VOCs, along with measurements of soil EC and HPT injection pressure – all in the same push!
- **Discrete Groundwater Profiling with Onsite VOC Analyses**, which provides onsite laboratory analytical screening for VOCs.

### *Roadmap to Monetization*

COLUMBIA Technologies starts by learning the monetization outcomes that need to be achieved, as well as the history of what has already been invested. A key element of the COLUMBIA Technologies Way is alignment of past investment and future achievement with the data-supported current state. This ensures development of business and engineering goals focused on environmentally responsible results.

To achieve the desired results, a very specific joint scope of work (SOW) is developed in consultation with the client's business and engineering leadership. The result is an asset-specific roadmap to monetization that addresses timeframes, investment criteria and resources available (including data, engineering, human, legal, technology and so on).

### *A Partner with Passion*

Propelled by its smart technical team, COLUMBIA Technologies excels as a collaborative partner. COLUMBIA Technologies becomes a true partner in site modeling and remediation by thinking outside the data collection framework and emphasizing a consultative approach.

Moreover, the COLUMBIA Technologies team is known for the passion and dedication it brings to every client's unique situation. By coupling this passionate approach to smarter and more complete solutions that eliminate site remediation errors and wasted time, COLUMBIA Technologies assures the best possible business outcomes.

### *Watchwords for Smarter Sustainable Solutions*

Guided by the watchwords Think and Restore, COLUMBIA Technologies is committed to Partnering for Smarter Sustainable Solutions. They are eager to become your partner on the road to monetizing your environmentally-troubled real property assets.

### *A Systematic Approach Combining Real-time Information, Smarter Data and Custom Solutions –*

***Discover Why COLUMBIA Technologies is Best-in-Class with the Highest Value Proposition!***

## **COLUMBIA Technologies' Impressive Credentials**

- Performed over 1,500 high-resolution site evaluations throughout the Americas, including Alaska, Hawaii, Canada, Mexico and Brazil, and Australia.
- Over 300 customers including 20 of the top environmental design firms, Fortune 500 companies, and state and federal agencies.
- 100% of technical staff members are degreed, experienced geochemists with a thorough understanding of high-resolution site characterization.

---

### *Partnering for Smarter Sustainable Solutions*



6700 Alexander Bell Drive  
Suite 200  
Columbia, MD 21046  
888-344-2704

