

LaMotte



AquaPhoenix  
SCIENTIFIC



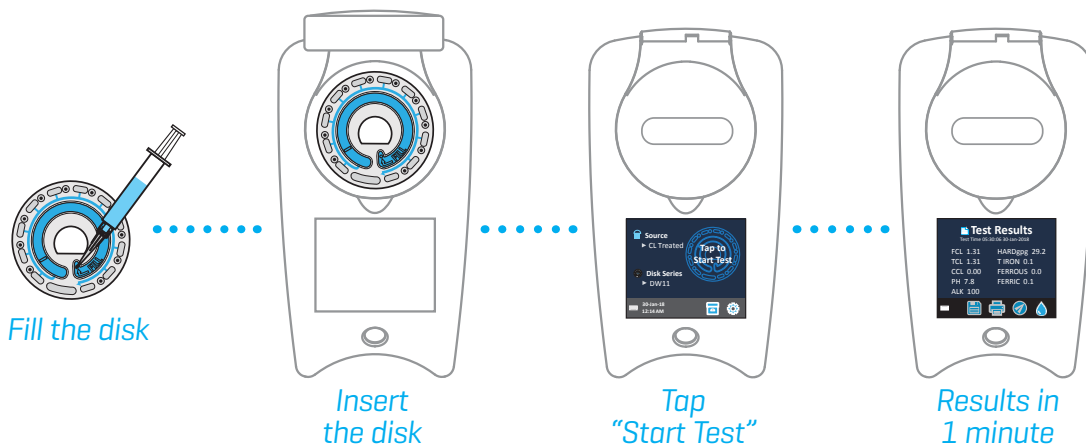
9 Tests in  
60 Seconds!

WaterLink® SpinTouch®  
CW

# WaterLink® SpinTouch® CW

The innovative WaterLink® Spin Touch® CW photometer does all your cooling water testing for you. Each sealed reagent disk contains the precise amount of reagent needed to run a complete series of tests. Just fill one unique Spin reagent disk with less than 3 mL of water and all your vital tests are done automatically—in just 1 minute!

It's the most advanced system for precise use of wet chemistry methods ever produced. Now analysts can achieve precision without time consuming test and clean-up procedures. This ground-breaking analysis system is so simple anyone can use it! No vials to fill, no prep time, no guessing!



*So Simple!  
So Fast!  
So Precise!*

## Available Tests See back page for details

- |                    |                   |
|--------------------|-------------------|
| Alkalinity, Total  | Copper            |
| Bromine            | Hardness, Calcium |
| Chlorine, Free     | Hardness, Total   |
| Chlorine, Total    | Iron, Total       |
| Chlorine, Combined |                   |







**Centrifugal  
Fluidics  
Photometry™**

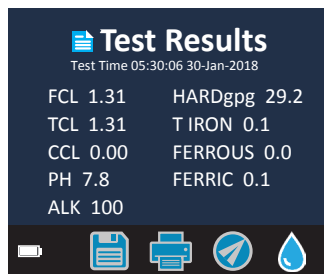
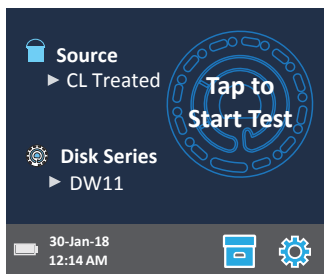
*“Proven analytical chemistry has combined with **Centrifugal Fluidics Photometry** to create the breakthrough **WaterLink® Spin Touch®**”*

## Reliable Results

- Virtually Eliminates User-Error
- Pre-Measured Reagents
- Exact Reaction Times and Auto-Blanking
- Meter Calibration Check System
- New 6-Wavelength Photometer

## Super Fast & Simple

- 1 Minute for 9 Complete Tests on One Disk
- Fill Disk and Insert > Select “Start Test” > Read Results



Instrument Type:	Centrifugal Fluidics Photometer
6 Wavelengths:	390 nm, 428 nm, 470 nm, 525 nm, 568 nm, 635 nm
Display:	Color Capacitive Touchscreen, 3.5", 320 X 240 pixel resolution
Batteries:	Lithium Ion, Rechargeable [Full Charge in 10 hours], 150 tests per charge
Communication:	Bluetooth, USB-C
Calibration:	Factory Set, Field Calibration via Internet Connection
Data Storage:	Last 250 Test Results with Date and Time
Water Resistance:	Rubber Over-molded Base, Rubber USB Port Plug, Gasketed Display and Hinge
Size & Weight:	8.5 L x 4.9 W x 4.1 H inches, 1.74 lb 22.6 L x 12.7 W x 11.4 H cm, 0.79 kg
Operation:	Single On/Off/Reset Button with Indicator Light
Firmware:	Internet Updateable [New Tests, New Test Calibrations, etc.]
Printer:	Optional Bluetooth Printer [Code 5-0066]; 384 dots per line at 8 dots/mm resolution

## Auto-Record Keeping

- Stores Test Dates, Times, Results

## Stand-Alone

- No Computer, Smartphone, or Tablet Needed
- Touchscreen Operation
- Communicate through Bluetooth® or USB

## Rugged and Portable

- Innovative Water-Resistant Housing
- Internal, Rechargeable Batteries

## WaterLink® Spin Touch® CW Code 3586



Includes: Photometer, Instruction Manual, Quick-Start Instructions, 3 Syringes, Meter Check Disk, Disk Cover, Sample Bottle, USB Cable with AC Adapter, Carrying Case  
(Disks sold separately)



## Cooling Water Series CW801

Code 4339-H | 50 pack

Alkalinity, Total	0-250 ppm
Bromine	0-33 ppm
Chlorine, Free	0-15 ppm
Chlorine, Total	0-15 ppm
Chlorine, Combined	0-15 ppm
Copper	0-6 ppm
Hardness, Calcium	0-800 ppm
Hardness, Total	0-1200 ppm
Iron, Total	0-6 ppm

Disks come individually packaged in foil pouches in boxed packs of 50.



*Multi-Parameter  
Reagent Disk*

*Our disks are manufactured right in our plant, assuring the highest quality control standards.*

**WaterLink® Spin Touch® CW**  
Code 3586



**AquaPhoenix**  
SCIENTIFIC

AquaPhoenix Scientific · 860 Gitts Run Rd · Hanover · PA · 17331 · USA  
866-632-1291 · info@aquaphoenixsci.com · www.aquaphoenixsci.com