

Overview

Investors in this fund are prepared to accept some risk of capital loss in the short and medium term, in order to achieve sustained real (above inflation) increase in capital growth over the long term. Portfolios will comprise, but not be limited to, a broadly balanced blend of units or shares in Equity Investments, Index Linked Gilts, Fixed Interest Funds, Property Funds, Commodities and Absolute Return Funds. The fund will be further diversified with alternative investment strategies, which may reduce the volatility historically associated with a purely equity based fund.

Investment Objective

This strategy aims to preserve the investor's savings above the rate of inflation. Given this target, the strategy also attempts to generate balanced returns through diversified investments with a maximum equity weighting of 65%.

Fund Details

Fund Size as at September 2019
£61,901

Launch Date
01 September 2017

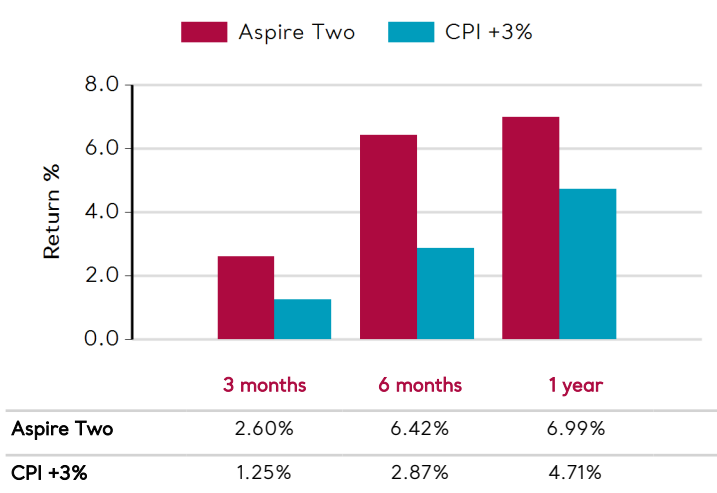
Base Currency
GBP

Benchmark Comparator

An annual return of 3% above the UK rate of inflation (as measured by the Consumer Prices Index) over 5-year rolling periods.

Ongoing Charges Figure (OCF)¹
0.349%

Performance as at September 2019

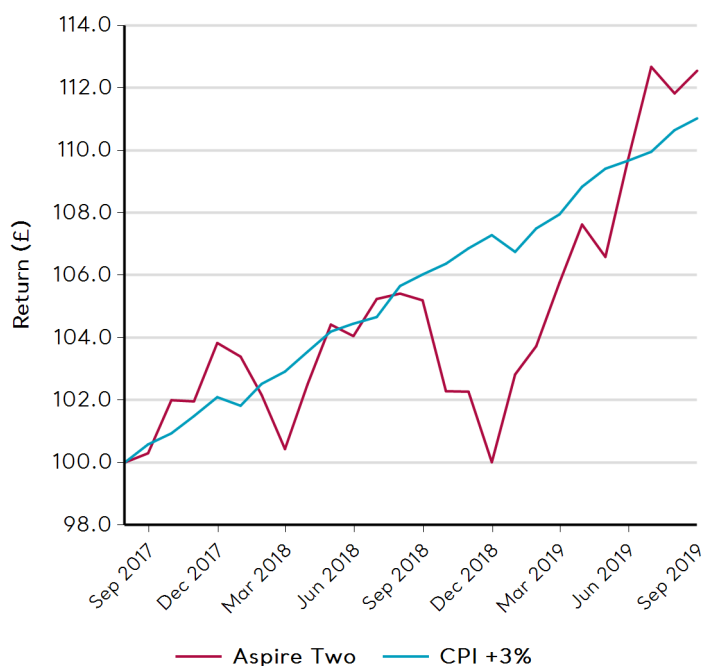


Performance is shown inclusive of the annual management charge, using dealing valuations. Periods greater than 12 months are annualised.

Past performance data does not exist before this date: September 2017.

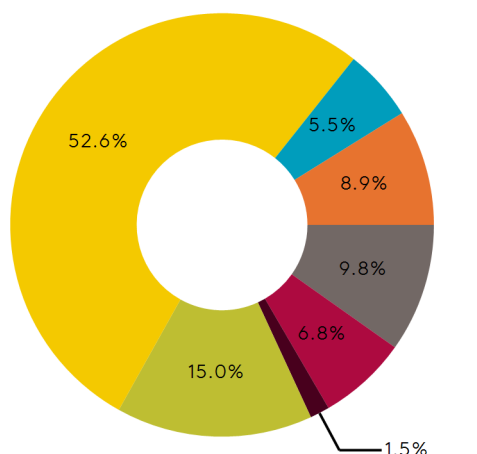
Past performance should not be seen as a guide to future performance and may not be repeated. The value of investments may fall as well as rise and investors may not get back the amount originally invested.

Cumulative Performance since inception





Asset Class Breakdown



Disclaimers

Aspire Savings Trust and Mobius Life Limited provide information to enable you to make your own investment decisions and this document should not be regarded as a personalised recommendation.

In the event of a redemption suspension being invoked by a third party (the underlying investment), Mobius Life Limited reserves the right to delay cancellation of the Units in that fund for the same period as the underlying investment.

Currency exchange rates may cause the value of overseas investments to rise or fall.

Where a fund is invested with another life company by means of a reinsurance arrangement, the risk of default by the reinsurer is borne by policyholders who invest in the relevant fund.

Asset allocations and choice of asset managers may change without notification.

Investing in emerging markets involves a high degree of risk and should be seen as long term in nature.

Mobius Life Limited is authorised by the Prudential Regulation Authority and regulated by the Financial Conduct Authority and the Prudential Regulation Authority. Mobius Life Limited is registered in England and Wales at 7th Floor, 20 Gresham Street London EC2V 7JE. Registered no. 3104978.

Top Ten Holdings

Fund	Allocation %
L&G Life N UK Equity Index Fund COB Acc D MLB N	20.8
SSgA As Of Priced (Net) International Equity Su	18.6
MI TwentyFour Core Corporate Bond Fund Acc D M	15.0
AXA IM US Short Duration High Yield Fund ZI Acc	9.8
SSgA As Of Priced (Net) Sterling Liquidity Sub	6.8
BLK Life AQC Emerging Markets Equity Fund S2 Ac	6.4
BLK Life AQC 5-15 Years UK Gilt Index Fund S2 A	5.5
Vanguard U.K. Inflation-Linked Gilt Index Fund	4.7
L&G Life AP Over 5 Year Index-Linked Gilts Inde	4.2
iShares Gold Producers UCITS D MLB ETF	3.2