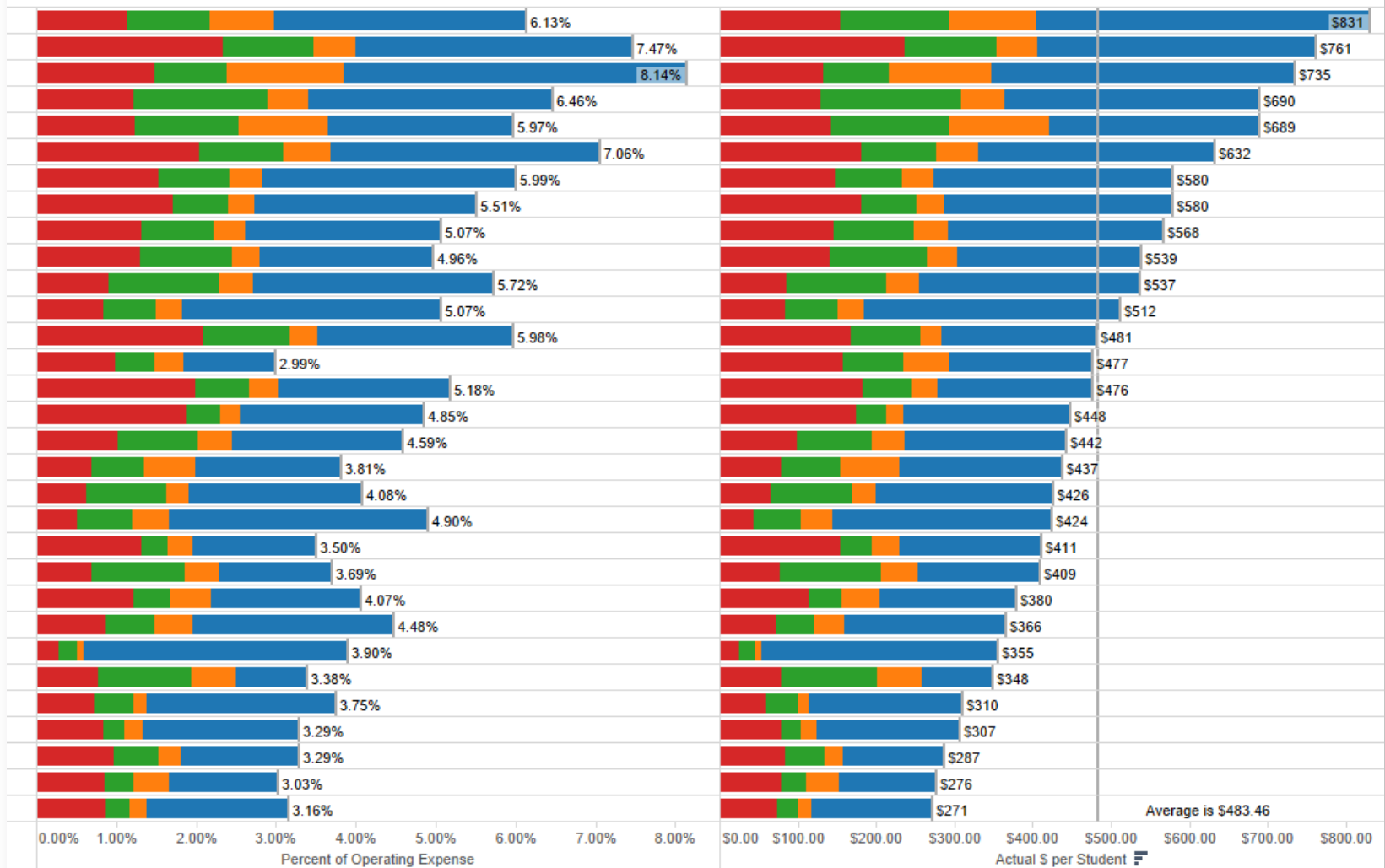


Line Item Spending Comparison

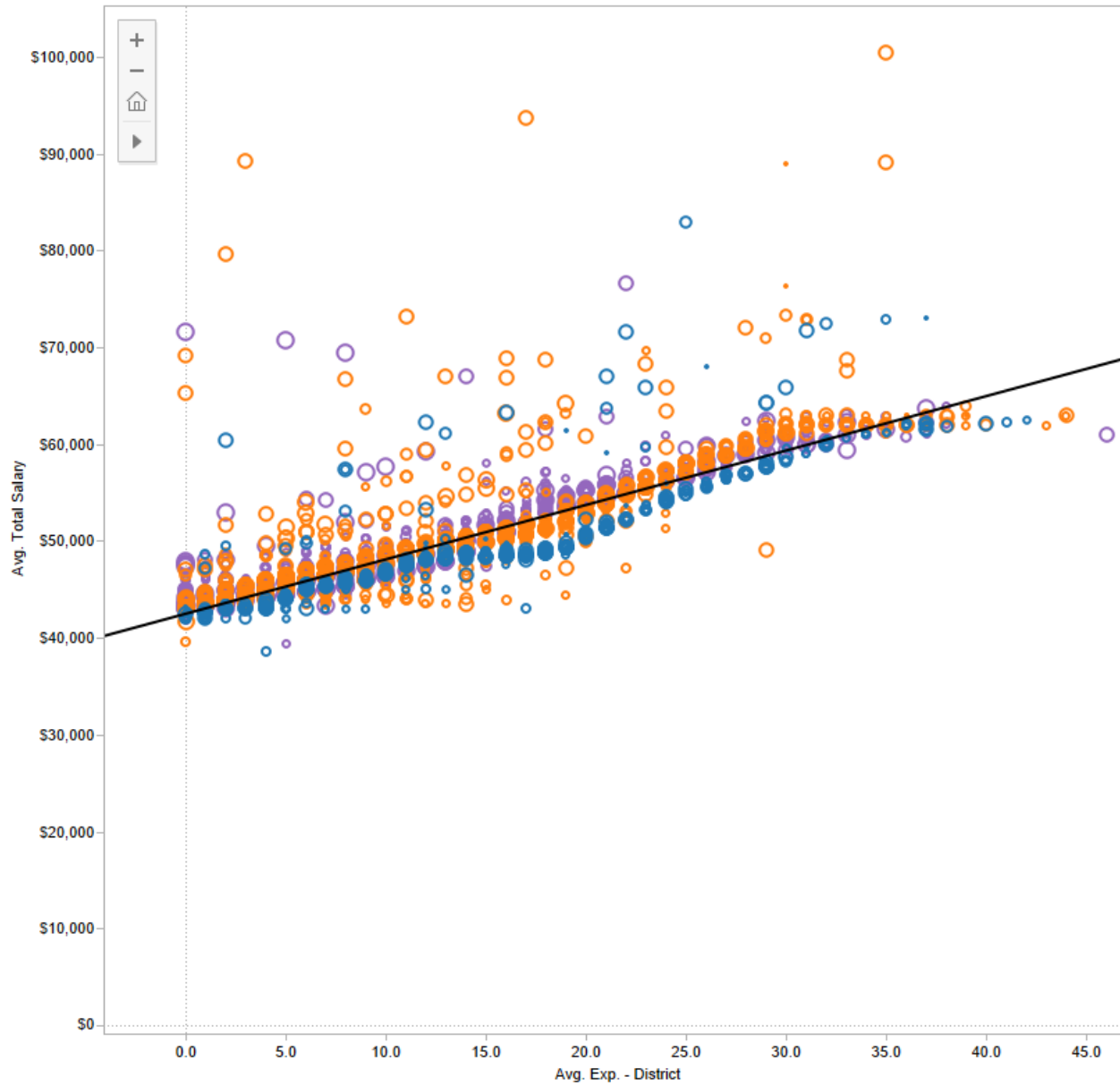
Note: "Total Operating Expense"

Includes Items from Funds Type General Fund, Special Revenue Funds (Federal Programs),
Special Revenue Funds (State Funded) and Special Revenue Funds (Local Programs)

Source: Public Education Information Management System (PEIMS) budget and actual financial data from Texas Education Agency



Salary and Experience
TEACHER
SOURCE: Texas FOIA Salary Data



Staffing Ratios

SOURCE: Texas FOIA Salary Data

