

A photograph of three hikers (two women and one man) walking away from the camera on a dirt trail. They are wearing backpacks and outdoor gear. The background shows a valley with a lake and mountains under a cloudy sky. A semi-transparent geometric pattern of white lines and polygons is overlaid on the left side of the image.

*rego*University 2017

Building an Effective Strategic Roadmap

Your Guides: Jennifer Scarlato, Wes McCoubrie

Introductions

- Take 5 Minutes
- Turn to a Person Near You
- Introduce Yourself



Agenda

- Defining the Value of a Strategic Roadmap
- Roadmapping Methodology
- Best Practices
- Real-World Examples
 - Long-Term Focus
 - Short-Term Focus
 - Annual Planning Support

Open Mic:

- How would you define a strategic roadmap?
- If you have a roadmap in place, how is it utilized?

Defining a Strategic Roadmap

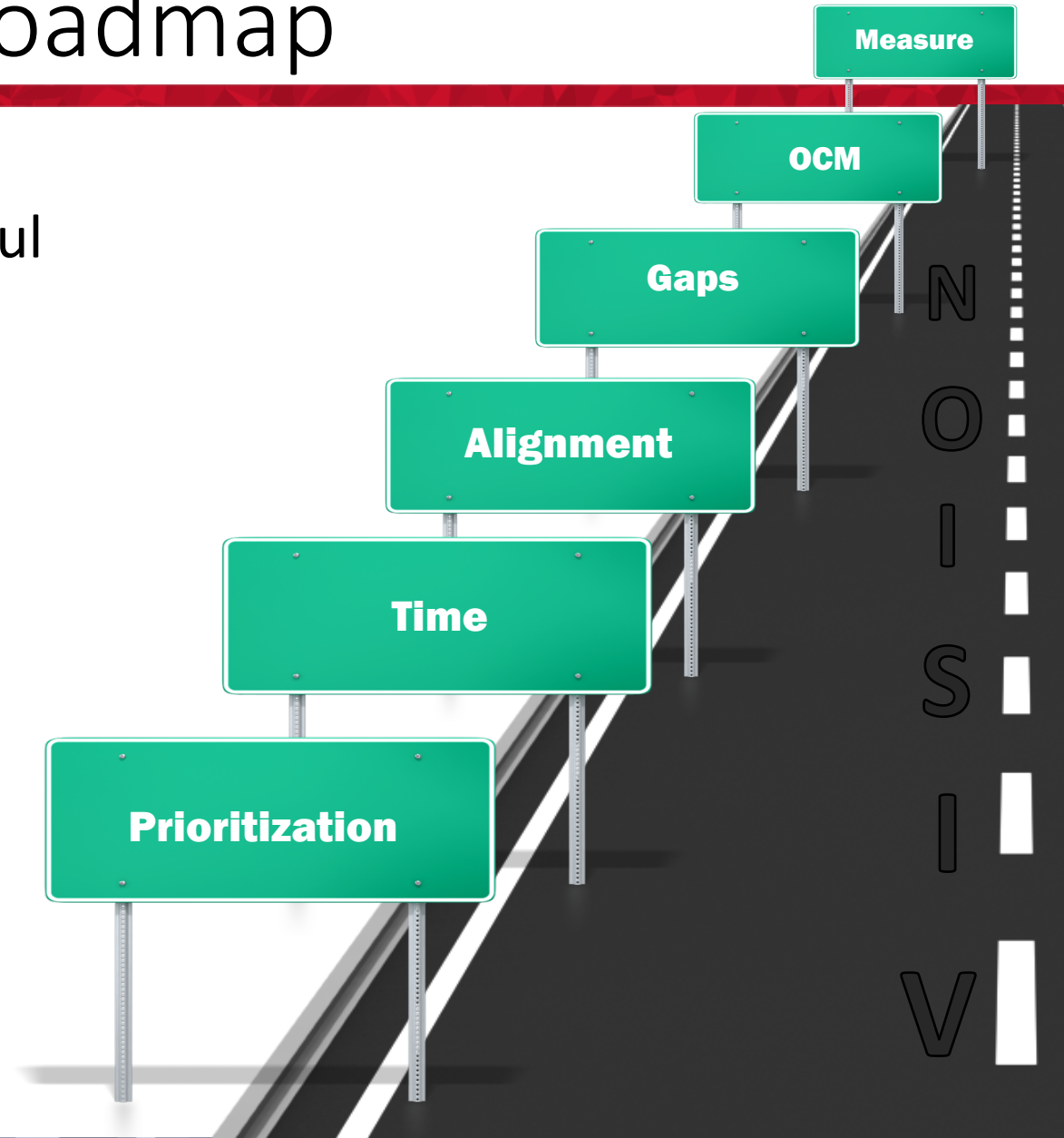
- A roadmap is a strategic plan to guide the continuous maturation of CA PPM as a function of its utilization, adoption, and supporting people and processes.
- Accounts for all organizational variables:
 - Corporate strategy
 - PPM vision and aspirations
 - Process and tool maturity
- Roadmaps can be effectively organized into two categories:
 - Those meant to steer an existing implementation.
 - Those meant to lay the foundation for a new implementation.



Importance of a Strategic Roadmap

Roadmaps help organizations deliver successful enterprise solutions. A clear roadmap will:

- Execute On A **Vision**
- Force **Prioritization**
- Provide an element of **Time**
- **Align** Business, IT and PPM Processes
- Reveal **Gaps** in PPS processes and functions
- Drive **Common Understanding** and **Shared Ownership (OCM)**
- Provide the ability to **Measure** success



Winchester House

7



Who needs a blueprint...

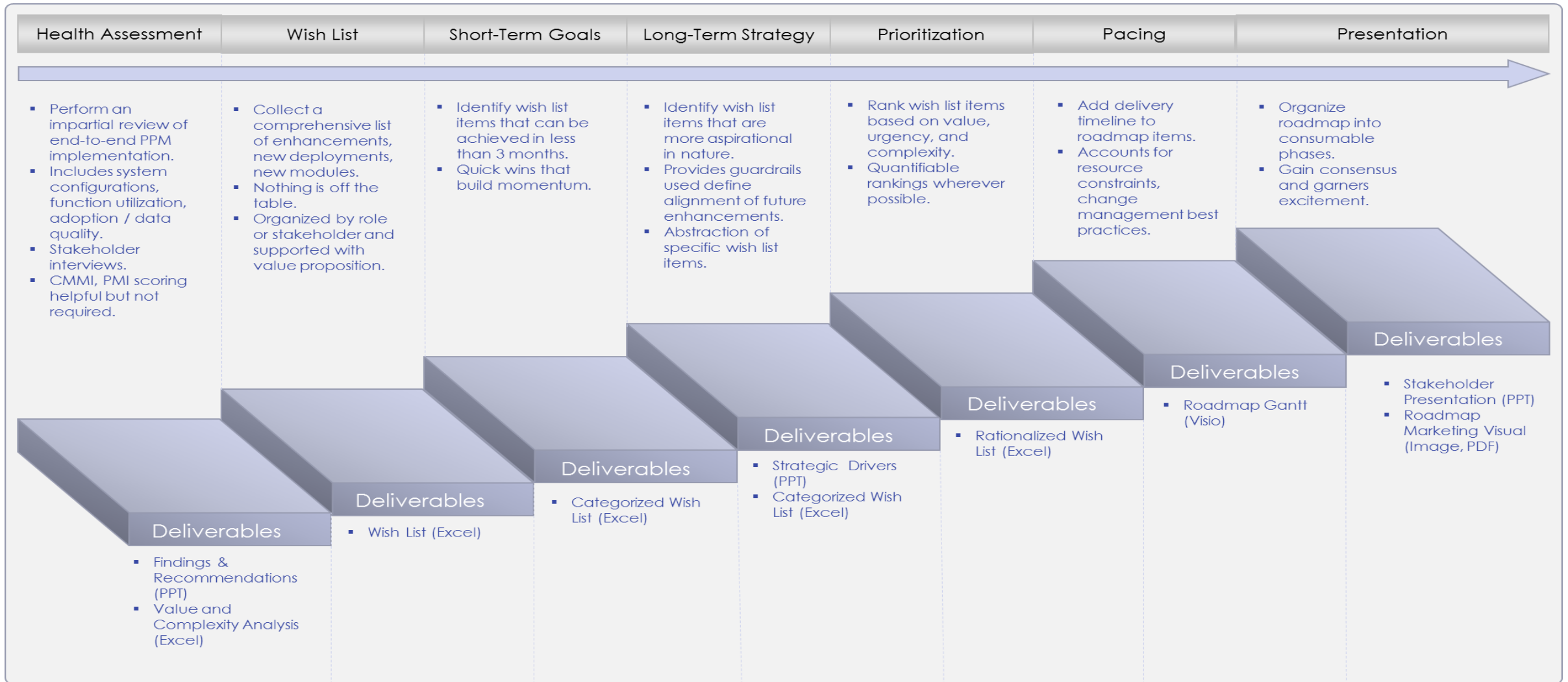


...when you can just build?



Methodology

8



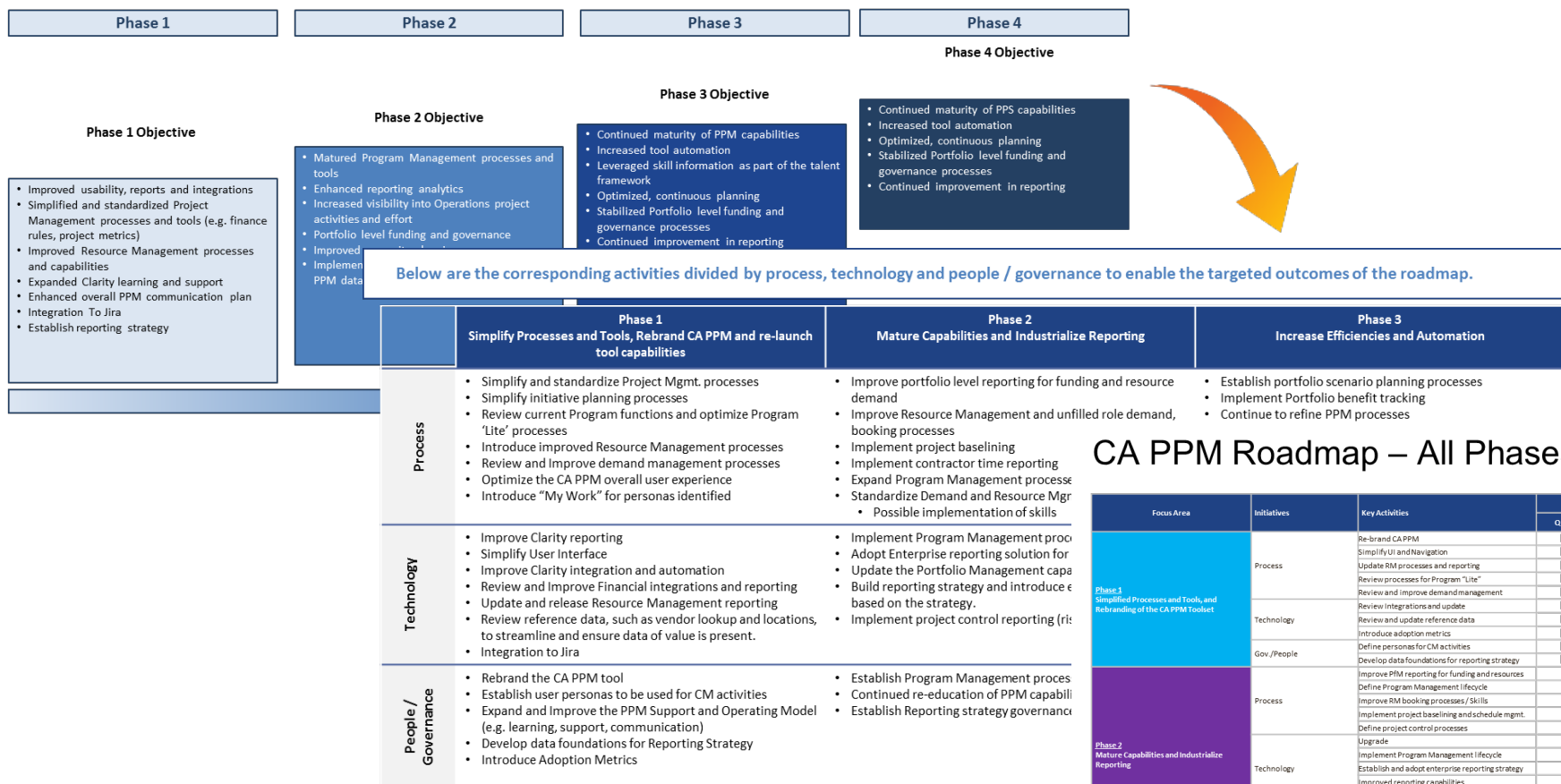
Open Mic:

- With whom in your organization would a roadmap resonate and why?

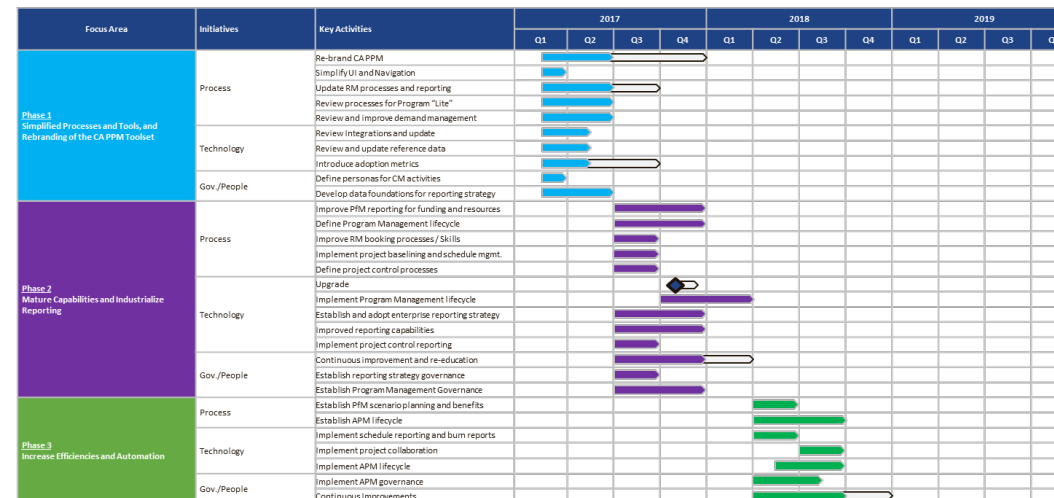
Best Practices

- Enable a continuous feedback mechanism for proactive course corrections.
- Do not look beyond 18 months, especially considering CA's relatively short product roadmap.
- Do not get too detailed with the wish list. Differentiate between minor enhancements and true roadmap initiatives.
- Balance roadmap items across three fundamental categorizations:
 - Foundational / Operations
 - Efficiency / Optimization
 - Value Excellence / Innovation

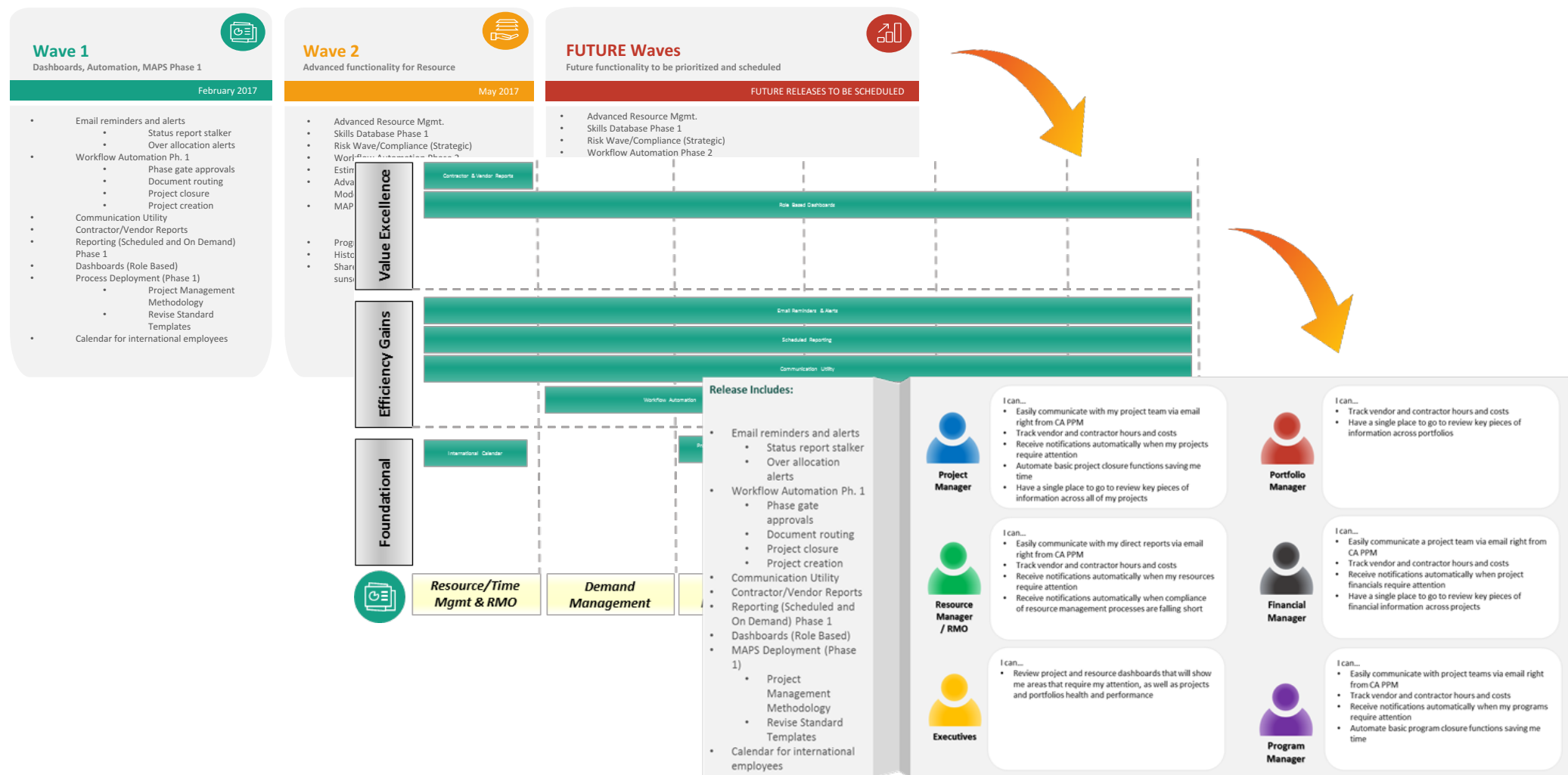
Example #1: Long-Term Roadmap



CA PPM Roadmap – All Phases



Example #2: Short-Term Roadmap



Example #3: Annual Planning Support

13

Current State Analysis

CA PPM Functionality

What functionality is being used? What is being done outside the system?

- Timesheets are deployed and used universally.
- Status reporting is deployed and used universally.
- Corporate IT has not expanded into anything beyond basic project administration.
- Digital projects progressed into detail financial planning.
- Vendor payments and invoices for Digital projects are sourced from CA PPM.
- Demand management module introduced to support capital planning intake and prioritization for both Digital and Corporate IT.
- Resource allocations are managed for named resource on in-flight projects. Role-based capacity planning, however, has not been introduced as a part of intake or ongoing management.

Short-Term CA PPM Goals (2017)

Optimization

Initiative	Major Deliverables (Technical Complexity / Effort)	Timeline
Corporate IT Alignment	<ul style="list-style-type: none">• Updated Support & Governance Model (Low / High)<ul style="list-style-type: none">◦ CA PPM Administration (Melissa Mascari Backfill)◦ PMO Standup• Contractor Inclusion (Low / Medium)• Financially Enabled Projects (Low / Low)• Forecasting Process & Training (Low / Medium)• Lawson Feed & Sunset Timesheet Auto-Approvals (Low / Low)	Q2 2017 – Q2 2018
Fixed Bid Cost	<ul style="list-style-type: none">• Enhanced Non-Labor Process & Input Screen (Low / Medium)	Q3 2017
Reporting Enhancement Cadence	<ul style="list-style-type: none">• Reporting Release Schedule (Low / Low)• Intake Process (Low / Low)	Q1 2017
ADP Integration (PTO Only)	<ul style="list-style-type: none">• Outbound Feed from ADP (High / Medium)	Q4 2017
Chargeback Model	<ul style="list-style-type: none">• Cost Distribution Analysis (Low / Medium)• CA PPM Configurations (Medium / Medium)	Q3 2017

Long-Term CA PPM Goals (2018+)



Innovation

- Application Portfolio Management
- Business Deployments (HR, Marketing, Finance)
- Program Management Processes & CA PPM Configurations



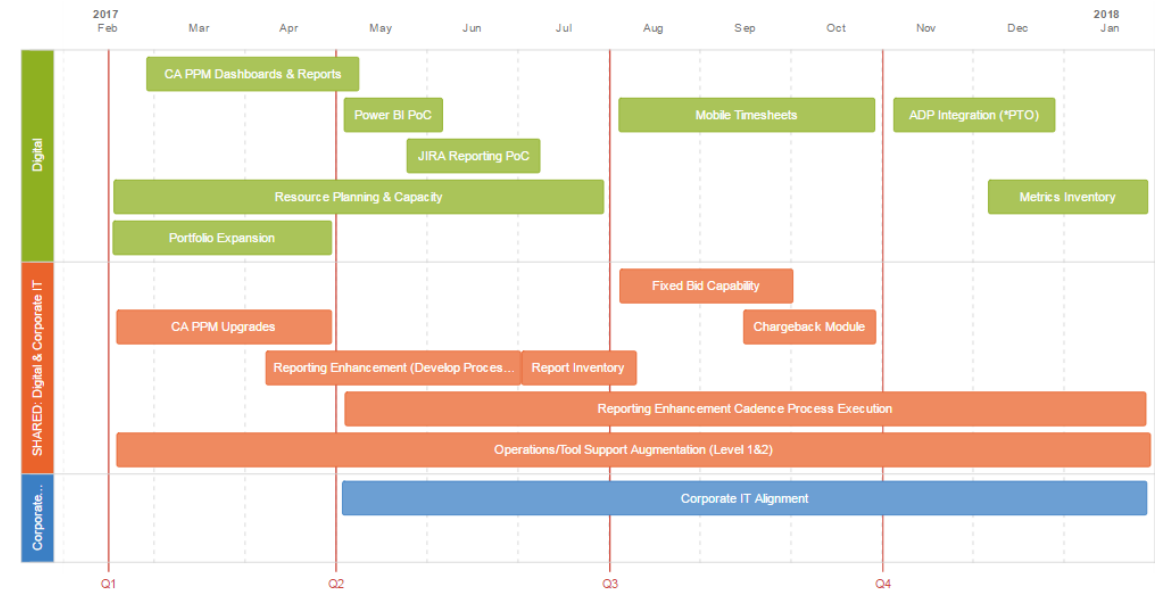
Optimization

- Agile Mapping (Release Management)
- Ariba Integration



Operations

- Rego University 2018



Questions?



*rego*University 2017

Let Rego be your guide.

Thank You For Attending regoUniversity

Instructions for PMI credits

- Access your account at pmi.org
- Click on **Certification**
- Click on **Maintain My Certification**
- Scroll down to **Report PDU's**
- Click on Course Training (or other appropriate category)
- Enter **Rego Consulting**
- Enter Activity- **Enter Name of Course**
- Enter **Description**
- Enter **Date Started**
- Enter **Date Completed**
- Provide Contact Person **Name of Person to Contact**
- Provide Contact E-Mail **E-Mail of Person to Contact**
- Enter Number of **PDU's Claimed** (1 PDU per course hour)
- Click on the **I agree this claim is accurate box**
- Click **Submit** button



Let us know how we can improve!
Don't forget to fill out the class survey.



Phone

888.813.0444



Email

info@regouniversity.com



Website

www.regouniversity.com