



rego*U*niversity 2019

SAN DIEGO

ServiceNow PPM | Demo

Your Guides: Jerry Dolak and Mark Lundquist

Part I: Introduction

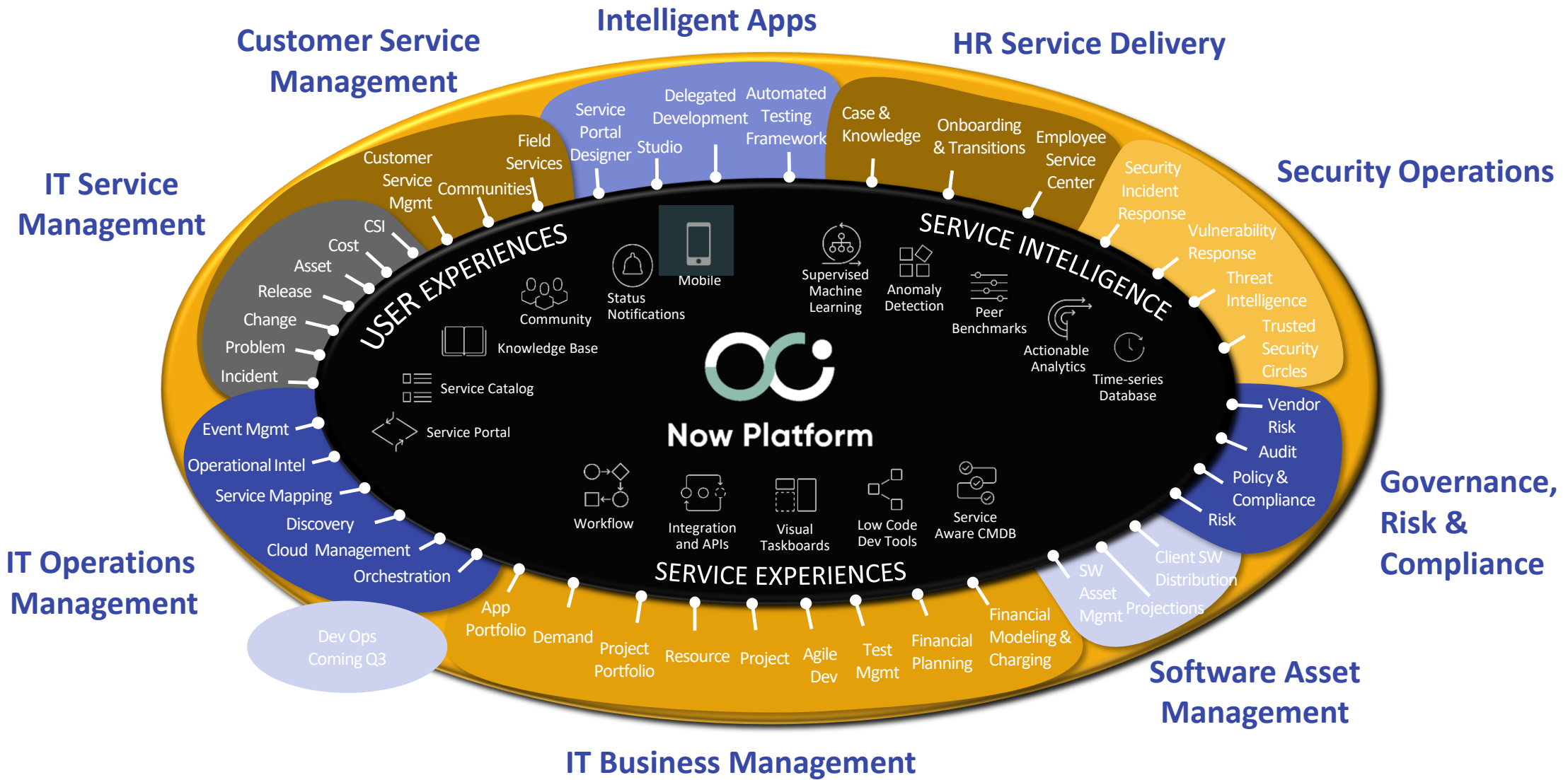
Overview of Upgrade Progression

*rego*University 2019

SAN DIEGO

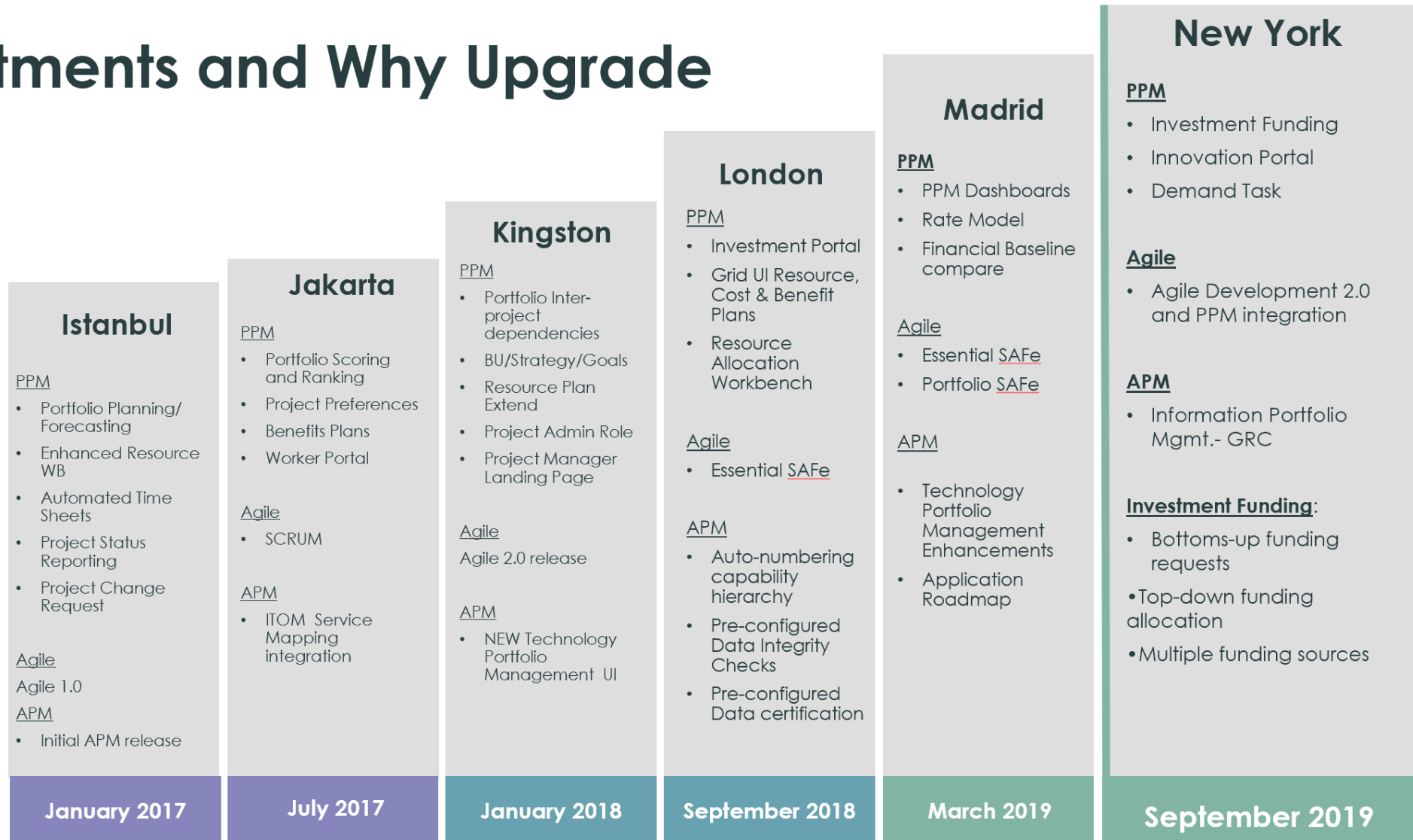
Let Rego be your guide.

ServiceNow Platform Capabilities



Growth of ITBM Capabilities Across Releases

Investments and Why Upgrade



Highlights of Releases

- Jakarta started to lay the foundation for the PPM improvements, introducing backend table updates and the Timesheet Portal
- Kingston focused on improving Project Management Experience, pushing decision making data to the PM
- London addressed Resource and Financial Management, improving the Project Manager and Resource Manager Experiences
- Madrid introduced the incorporation of Performance Analytics into dashboard trend reporting and date-based rate management
- New York provided substantial updates to the intake process with Ideas and Demands and introduced the Investment Funding solution.

Part II: Demo

Demo Topics



Let Rego be your guide.

What we will cover

- Aggregation of data into dashboard views
 - Cross functional
 - Performance Analytics tracking
 - Ad hoc reporting thru investment portal
- Ideation and Demand
 - Innovation Portal (ideas)
 - Demand management, demand tasks
- Project Manager views
 - Reporting and status
- Managing Resources in a single view with the Allocation Workbench
 - Breakout of tactical management views to align resources to business areas
- Investment Funding
 - Bottoms-up and Top-down funding with multiple funding sources

Questions?



rego **University** 2019

SAN DIEGO

Let Rego be your guide.

Thank You For Attending regoUniversity

Instructions for PMI credits

- Access your account at pmi.org
- Click on **Certifications**
- Click on **Maintain My Certification**
- Click on **Visit CCR's** button under the **Report PDU's**
- Click on **Report PDU's**
- Click on **Course or Training**
- Class Name = **regoUniversity**
- Course Number = **Session Number**
- Date Started = **Today's Date**
- Date Completed = **Today's Date**
- Hours Completed = **1 PDU per hour of class time**
- Training classes = **Technical**
- Click on **I agree** and **Submit**



Let us know how we can improve!
Don't forget to fill out the class survey.



Phone

888.813.0444



Email

info@regouniversity.com



Website

www.regouniversity.com