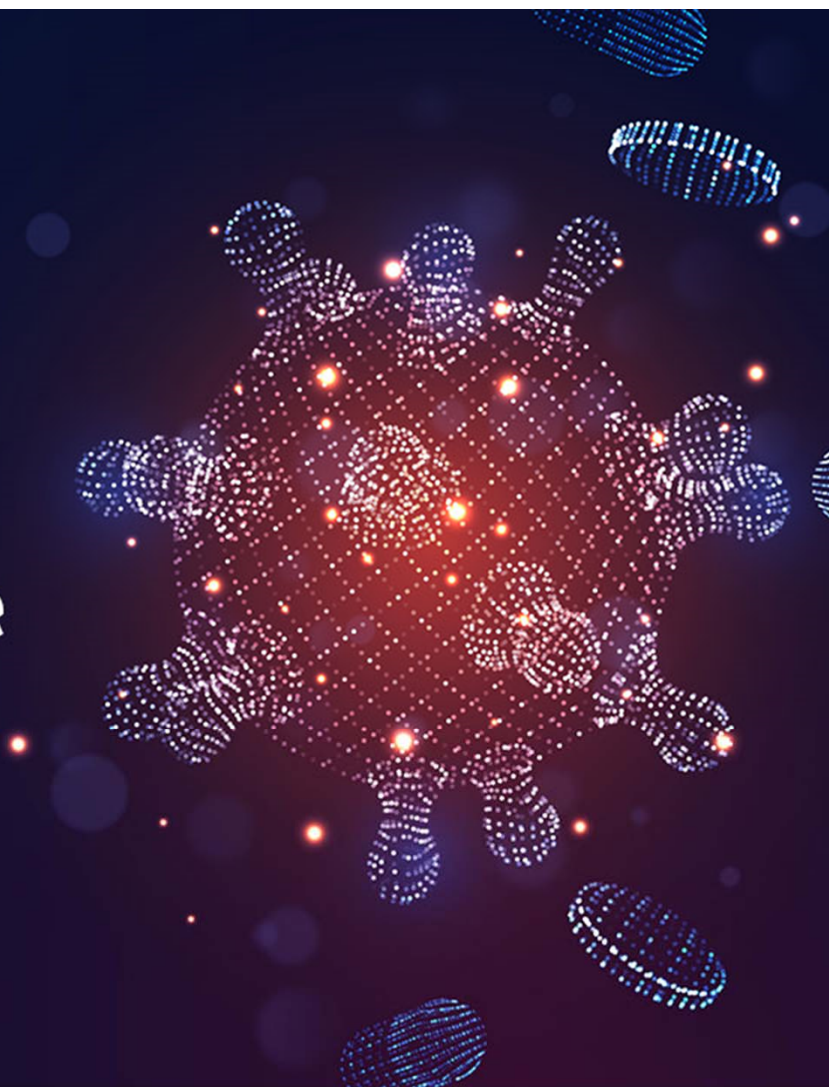




Webinar

# Critical Developments in Commercial Real Estate Arising from COVID-19

Thursday, April 9, 2020 · 2:00pm - 3:00pm



# Webinar Housekeeping

## Viewing the Slides

Today's slide presentation will advance automatically in synch with the live presentation.

## Handouts

A printable version of the slide presentation can be downloaded from the webinar control panel.

## Adjusting Your Volume

Volume can be adjusted using the volume control on your computer or phone.

## Asking Questions

Throughout the webinar, type your questions using the "QUESTIONS" section in the webinar panel. We will answer as many questions as possible at the end of the presentation.

## Information

This webinar provides general information about legal issues. It should not be construed as legal advice or a legal opinion. Attendees should seek legal counsel concerning specific factual situations confronting them.

# Presenters

**Richard W. Donner** is a shareholder in the Reinhart's Real Estate Practice and a member of the firm's Entitlements Group and Commercial Leasing Group.

414-298-8169 | [rdonner@reinhartlaw.com](mailto:rdonner@reinhartlaw.com)

**Brooklyn A. Kemp** is an attorney in Reinhart's Real Estate Practice.

414-298-8338 | [bkemp@reinhartlaw.com](mailto:bkemp@reinhartlaw.com)

**Justin F. Oeth** is a shareholder in Reinhart's Real Estate Practice, co-chair of the Construction Industry Group and a member of the Real Estate Leasing Team.

608-229-2250 | [joeth@reinhartlaw.com](mailto:joeth@reinhartlaw.com)

## Presenters (cont.)

Joshua D. Taggatz is a trial attorney and shareholder in Reinhart's Litigation Practice.

608.229.2102 | [jtaggatz@reinhartlaw.com](mailto:jtaggatz@reinhartlaw.com)

Nathan J. Wautier is a shareholder in Reinhart's Real Estate, Corporate Law, and Banking and Finance practices.

608.229.2249 | [nwautier@reinhartlaw.com](mailto:nwautier@reinhartlaw.com)

Joia Sanders Wodarczyk is an attorney in Reinhart's Real Estate Practice.

608.229.2239 | [jwodarczyk@reinhartlaw.com](mailto:jwodarczyk@reinhartlaw.com)



# Landlord/Tenant Issues and Concerns

- What does the lease say? ~ Richard Donner
- Impacts on retail/office/industrial space ~ Richard Donner
- Force majeure/impracticability ~ Brooklyn Kemp, Joshua Taggatz
- Rent deferral strategies ~ Justin Oeth
- Government shut down of business/eminent domain ~ Richard Donner
- Evictions ~ Joshua Taggatz

# Financing Implications

~Nathan Wautier

- Modifying loans to assist with cash flow
- Understanding rights and obligations
- CMBS market

# Impacts on Construction

- Wisconsin's "Safer at Home" order ~ Joia Sanders Wodarczyk
- Worksite considerations ~ Justin Oeth
- Construction contract terms ~ Justin Oeth

# Questions?

Type your questions using the "QUESTIONS" section in the webinar control panel.  
We will answer as many questions as possible.

## Thank You!

This presentation provides information of a general nature. None of the information contained herein is intended as legal advice or opinion relative to specific matters, facts, situations or issues. Additional facts and information or future developments may affect the subjects addressed in this presentation. You should consult with a lawyer about your particular circumstances before acting on any of this information because it may not be applicable to you or your situation.

reinhardtlaw.com • 800.553.6215

MILWAUKEE • MADISON • WAUKESHA • WAUSAU • CHICAGO • ROCKFORD • MINNEAPOLIS • DENVER • PHOENIX