

Excel

Grow Light

User Manual

READ THESE INSTRUCTIONS CAREFULLY BEFORE INSTALLATION

Thank you for purchasing the AExcel HID grow light. AEssense has strived to build a high quality, long lasting grow light designed to give growers excellent yield. Please read and understand this manual completely before installing and using this product. Incorrect installation or use can lead to failure and damage to the grow light. Damage to the grow light as a result of incorrect installation or use may void your warranty.

AMBIENT OPERATING CONDITIONS

This grow light is intended for indoor environments with climate control only. It is **suited for damp locations** but should not be used outdoors or in wet environments with direct exposure to water. Installation of grow lights should always follow local installation and safety regulations. **DO NOT INSTALL YOUR AEXCEL GROW LIGHT OUTDOORS OR IN A WET ENVIRONMENT.**

HID grow lights generate intense heat. **DO NOT OPERATE AEXCEL GROW LIGHTS CLOSE TO FLAMMABLE MATERIALS.** The lamp (bulb) and reflector get hot during normal operation. Do not touch the reflector or lamp during or right after operation, and make sure the power cord does not come in contact with any hot part of the grow light. **A mechanical ventilation or cooling system is required to maintain the temperature within the growing space below 104 °F (40 °C).** Exceeding this temperature may stress the electronic components, leading to shortened operational lifetime and decreased reliability. Check that the lamp is clean and inserted correctly.

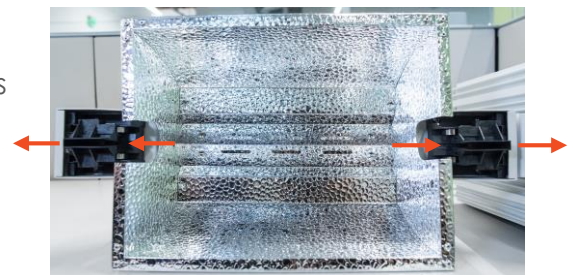
LAMP (BULB) INSTALLATION AND REPLACEMENT

SAFETY PRECAUTIONS

- **Always** install the lamp before switching on mains power
- Once turned off, avoid hot restrike by allowing the lamp to cool for 30 minutes before turning the grow light on again
- Always switch off mains power and wait 30 minutes before replacing the lamp
- As the lamp and the lamp holders are fragile components, never use excessive force while handling them
- Keep all components away from water
- **Never** touch the lamp or the reflector with bare hands

REMOVE OLD LAMP

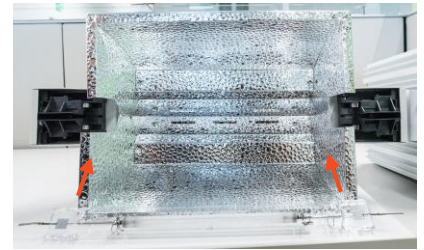
1. Switch off mains power
2. Hold the lamp while opening the lamp holders by sliding them outwards [A]
3. Carefully take the lamp out of the fixture



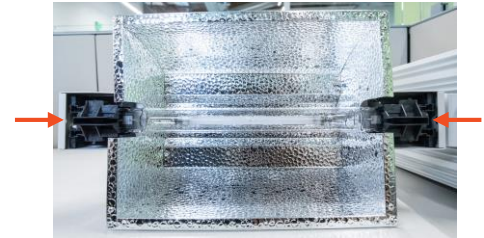
A.

INSTALLING A NEW LAMP

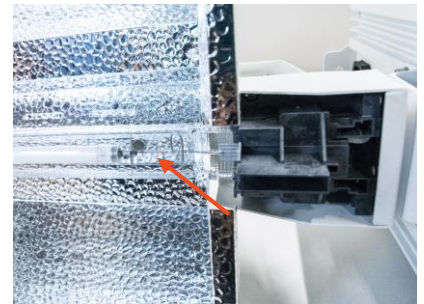
1. Required tools: cotton gloves, dry cloth, rubbing alcohol
2. Switch off mains power
3. Put on the cotton gloves
4. If the new lamp is unclean, wipe it clean with a dry cloth and rubbing alcohol; DO NOT use other cleaning agents
5. Make sure the end wires of the lamp are straight
6. Place the grow light on flat surface
7. Open the lamp holders by sliding them outwards [A]
8. Press the lamp horizontally into position until the metal springs hold it in place, with the getter near the ballast [B] [D]
9. Close the lamp holders by sliding them inwards all the way [C]
10. Clean the lamp after installation with a dry soft cloth



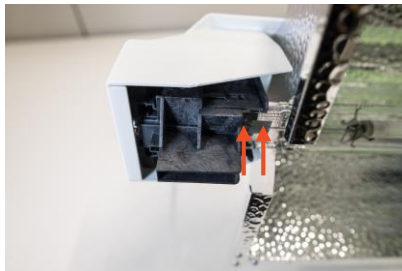
B.



C.



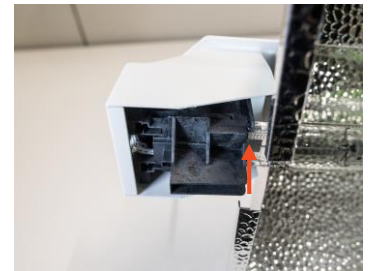
D.



Lamp holder open



Lamp holder
improperly closed



Lamp holder closed

GENERAL CARE

Regularly clean the grow light with a dry cloth to ensure optimal cooling. Switch off mains power before cleaning. Check your electrical connections regularly.

If the power cord is damaged, it MUST be replaced by AEssense or a qualified service agent to avoid any hazards.

THIS PRODUCT MUST BE INSTALLED IN ACCORDANCE WITH THE APPLICABLE INSTALLATION CODE BY A PERSON FAMILIAR WITH THE CONSTRUCTION AND OPERATION OF THE PRODUCT AND THE HAZARDS INVOLVED.

INSTALLATION

Hang the ÆExcel grow light in the desired location using the hanging hooks and adjust the mounting height to 28 inches from the plant canopy. Once the grow light is in place, plug the AC power cord first into the grow light and then the wall outlet.



ÆExcel grow light hanging over grow tray

Only connect the ÆExcel grow light to power sources with the correct voltage (249-305 V AC, 50-60 Hz) using the provided power cord. Protect the power cord from being damaged in any way. **Only connect the ÆExcel grow light to an electrical outlet of appropriate type and rating.** Be particularly cautious when routing the power cords.

1. The power cords must not be secured to the building structure
2. The power cords must not be concealed or routed through ceilings, floors, walls, or other parts of the building structure
3. The power cords must not be located above a suspended ceiling or dropped ceiling
4. The power cords must be routed so that they are not subject to strain and are protected from physical damage
5. The power cords must be visible over their entire length
6. If you use extension power cords, they must be used within their rated ampacity as determined for the maximum ambient temperature of 104 °F (40 °C). The ÆExcel grow light may draw up to 4A current, depending on the light intensity setting and the voltage of the power source.

DIMMING AND CONTROL

Use the dimming knob to set the desired light intensity manually or select the external control setting ("EXT") to automate the grow light by the Guardian™ Grow Manager with the help of a Wired Smart Relay. This ÆExcel grow light may take up to 10 minutes to reach the desired light intensity.



Dimming knob

A 1281 Reamwood Ave.
Sunnyvale, CA 94089

P 1.800.369.8673

O 1.650.564.3058

E info@aessensegrows.com