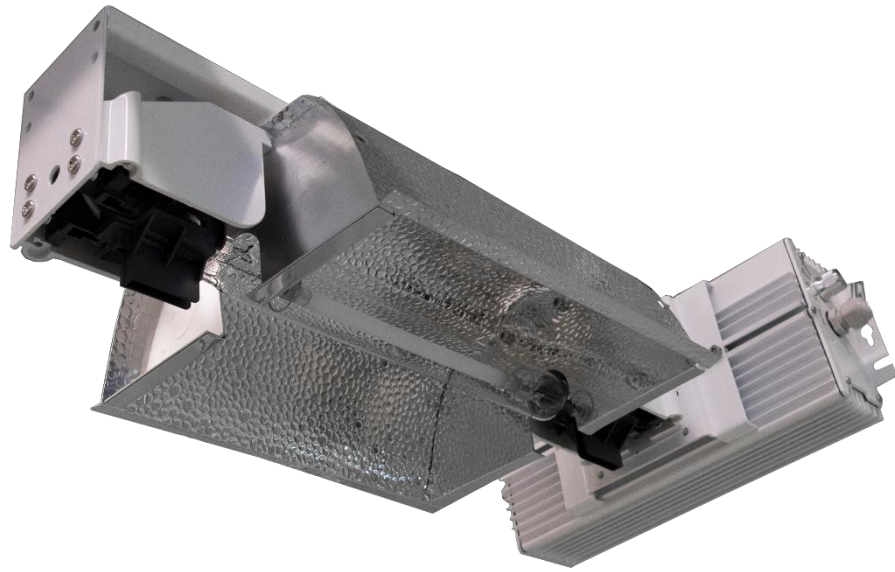


1281 Reamwood Ave.  
Sunnyvale, CA 94089  
Toll Free: 1-800-369-8673  
Office: 1-650-564-3058

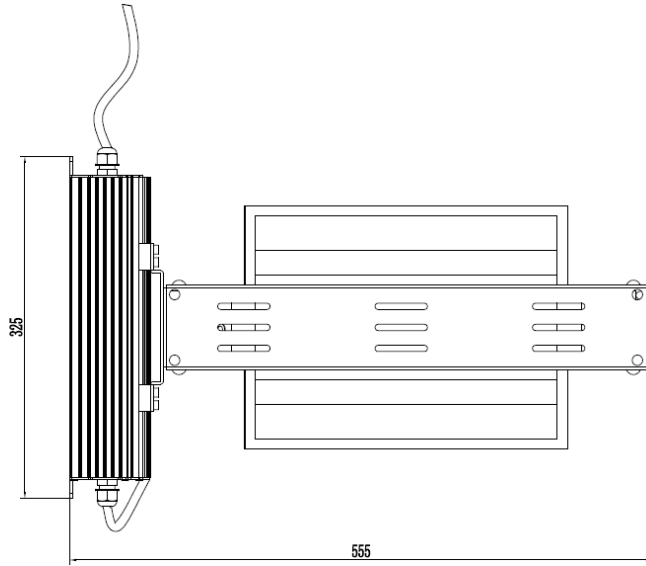
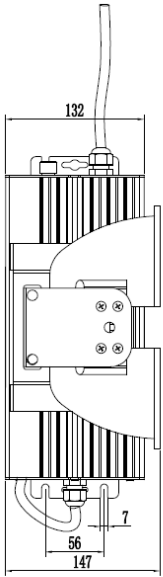


## **AExcel FXH1000 HPS/MH Fixture**

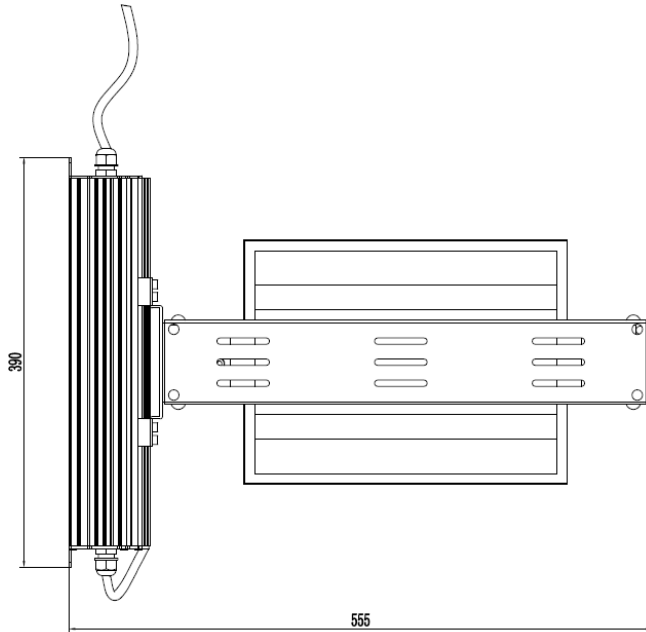
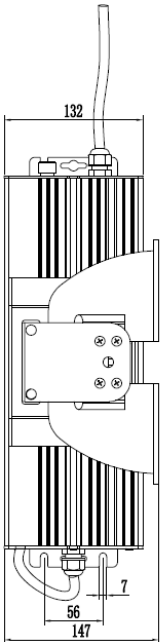
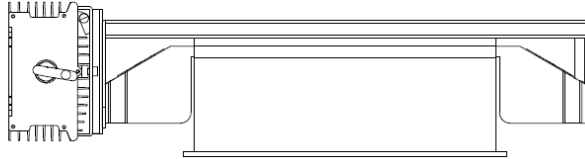
Grow Light, 230V or 110-240V, 1000W **Step Dimming**



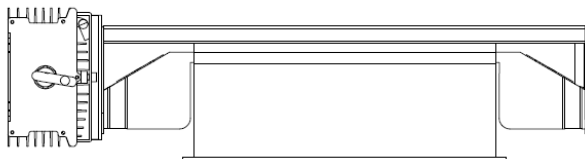
**Ideal with AEssense  
Blaze HPS & MH bulbs**



**230V**



**110-240V**



## 110-240V Universal Ballast Specifications

	Min	Typ	Max
<b>Input Voltage</b>	110 V <sub>AC</sub>	–	240 V <sub>AC</sub>
<b>Input Frequency</b>	50 Hz	–	60 Hz
<b>Input AC Current <sup>1</sup> (110 V<sub>AC</sub> input)</b>	10 A	–	11 A
<b>Input AC Current <sup>1</sup> (265 V<sub>AC</sub> input)</b>	4.6 A	–	5.1 A
<b>Lamp Power</b>	–	1000 W	–
<b>Lamp Voltage</b>	–	400 V	–
<b>Efficiency <sup>1</sup> (110 V<sub>AC</sub> input)</b>	92%	–	95%
<b>Efficiency <sup>1</sup> (265 V<sub>AC</sub> input)</b>	94.5%	–	95%
<b>Turn-on Delay Time</b>	1 s	–	2 s
<b>Overtemperature Protection <sup>2</sup></b>	–	55 °C (131 °F)	–
<b>Open Circuit Protection</b>	Yes		
<b>Short Circuit Protection</b>	Yes		
<b>Output Power Limit</b>	Yes		
<b>Ingress Protection</b>	IP54		
<b>Operating Temperature</b>	-15 °C (5 °F)	–	45 °C (113 °F)
<b>Enclosure Temperature Increase</b>		–	45 °C (81 °F)
<b>Dimensions (L x W x H)</b>	555 mm x 394 mm x 147 mm (21.85" x 15.5" x 5.8")		
<b>Weight</b>	7.5 kg (16.5 lbs)		
<b>Lifetime</b>	5 yrs		
<b>Warranty</b>	3 yrs		

1. Measured at full load
2. Ambient temperature threshold

## 230V Optimized Ballast Specifications

	Min	Typ	Max
<b>Input Voltage</b>	175 V <sub>AC</sub>	–	265 V <sub>AC</sub>
<b>Input Frequency</b>	50 Hz	–	60 Hz
<b>Input AC Current <sup>1</sup> (175 V<sub>AC</sub> input)</b>	6.3 A	–	6.9 A
<b>Input AC Current <sup>1</sup> (265 V<sub>AC</sub> input)</b>	4.1 A	–	4.6 A
<b>Lamp Power</b>	–	1000 W	–
<b>Lamp Voltage</b>	–	400 V	–
<b>Electrical Efficiency <sup>2</sup></b>	92%	–	95%
<b>Turn-on Delay Time</b>	1 s	–	2 s
<b>Overtemperature Protection <sup>3</sup></b>	–	55 °C (131 °F)	–
<b>Open Circuit Protection</b>	Yes		
<b>Short Circuit Protection</b>	Yes		
<b>Output Power Limit</b>	Yes		
<b>Ingress Protection</b>	IP54		
<b>Operating Temperature</b>	-15 °C (5 °F)	–	45 °C (113 °F)
<b>Enclosure Temperature Increase <sup>4</sup></b>	–	–	45 °C (81 °F)
<b>Dimensions (L x W x H)</b>	555 mm x 330 mm x 147 mm (21.85" x 13" x 5.8")		
<b>Weight</b>	6.8 kg (15 lbs)		
<b>Lifetime</b>	5 yrs		
<b>Warranty</b>	3 yrs		

1. Measured at full load
2. Measured at full load with 5 A lamp current
3. Ambient temperature threshold
4. Measured at 175 V<sub>AC</sub> input

# Photon Flux Distribution

Measured with Blaze HPS bulb running at 1000W with fixture centrally hanging at pre-determined height above a 4'x5' grow area.

