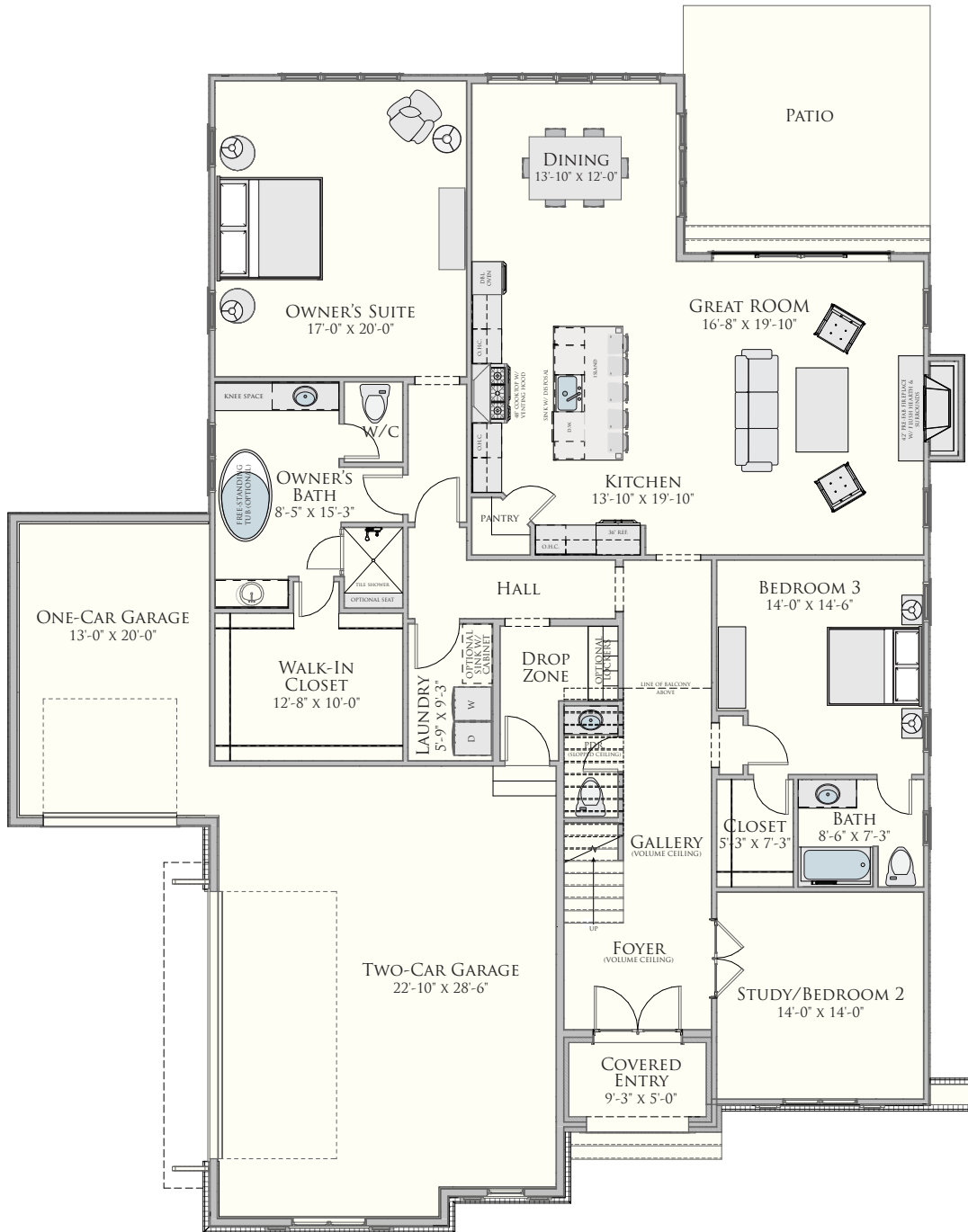


BERKELEY

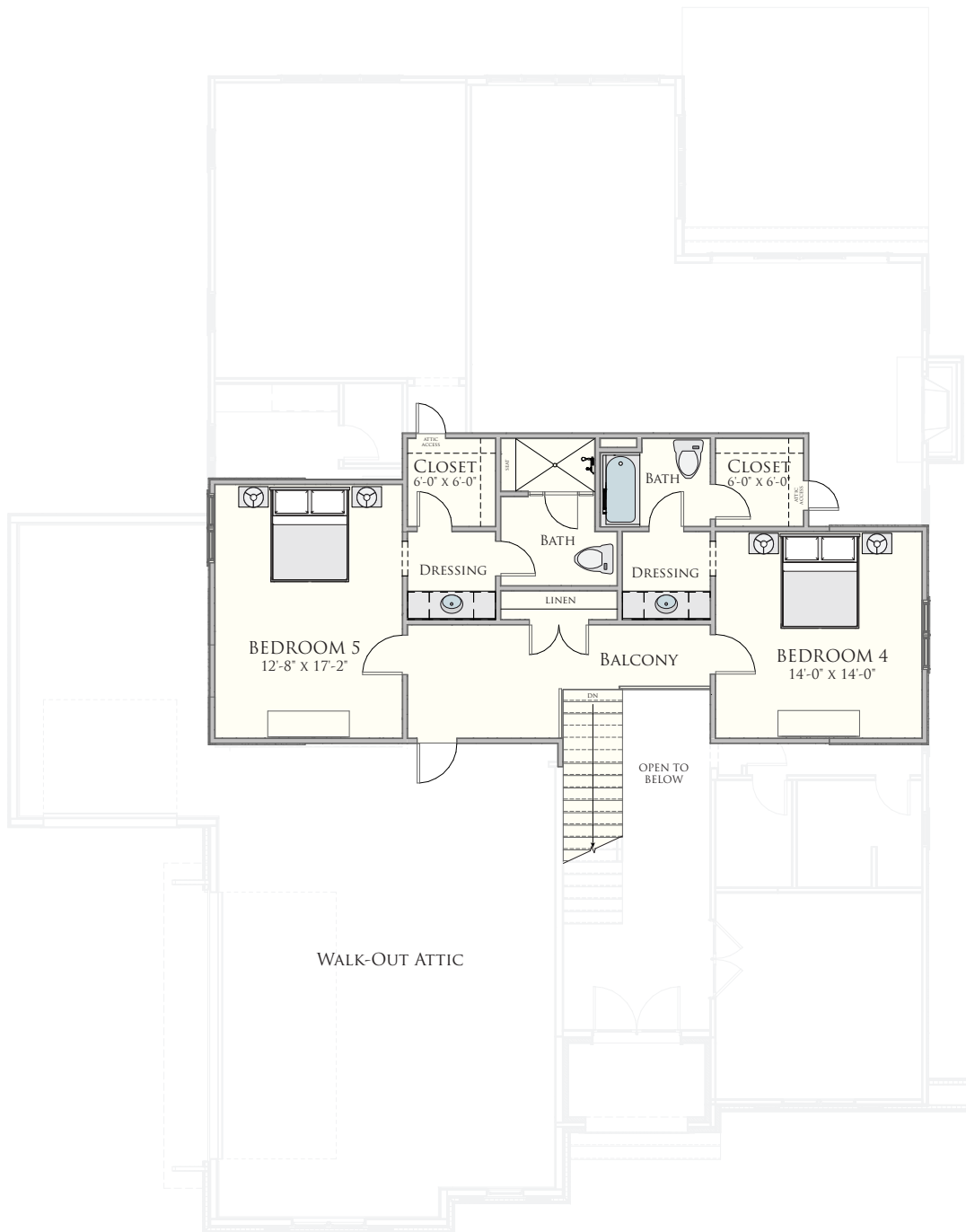
3456 Square Feet • 5 Bedrooms • 4 Full Baths • 1 Half Bath • Master Down



BERKELEY
MAIN LEVEL



BERKELEY
UPPER LEVEL



THE SIMONINI DIFFERENCE

SIMONINI HOMES is the 3rd generation of a family owned home building business. Our heritage spans four decades, as the Southeast's premier custom homebuilder, offering exceptional experience and expert capability in everything we do. Unparalleled quality and customer service serve as the cornerstone of our organization.

We are proud to be a part of the Simonini Team that has received national honors with the top three awards in the homebuilding industry: America's Best Builder, National Builder of the Year, and the National Housing Quality GOLD Award. This recognition is the result of our approach to building efficient, structurally sound, and livable homes; offering exceptional value and enduring quality for our homeowners. In addition, Alan Simonini is the only area builder to be honored nationally and inducted into the William Marvin Hall of Fame for Residential Design. This award celebrates architects and builders with a legacy of delivering remarkable residential design.

Enter a Simonini home, and the impact is immediate. Something just feels right, but you don't necessarily know why. Well, the reason is simple: our homes are honest in architectural details and designed to enhance the many ways you live in your home. Pause anywhere in your home and be re-inspired by its beauty, grace, and timelessness. At Simonini, we're passionate about providing a great experience for our homeowners and enthusiastic about crafting individual homes, transforming homes through renovations, and creating exceptional neighborhoods that not only satisfy our clients in every detail, but also stand the test of time.

We invite you to Experience **The Simonini Difference.**



Simonini Homes LLC

501 East Morehead Street, Suite 4 • Charlotte NC 28202

tel: 704.333.8999 fax: 704.896.3630

website: simonini.com email: info@simonini.com



All floorplans and elevations are the property of the architect and Simonini Homes LLC and may not be reproduced. All plans, renderings, drawings, specifications, dimensions, materials, and availability are subject to change without notice. The information presented here is not intended for use during purchasing and is for illustration use only. Please consult sealed construction documents and construction specifications for official details.