

THE COLLIN

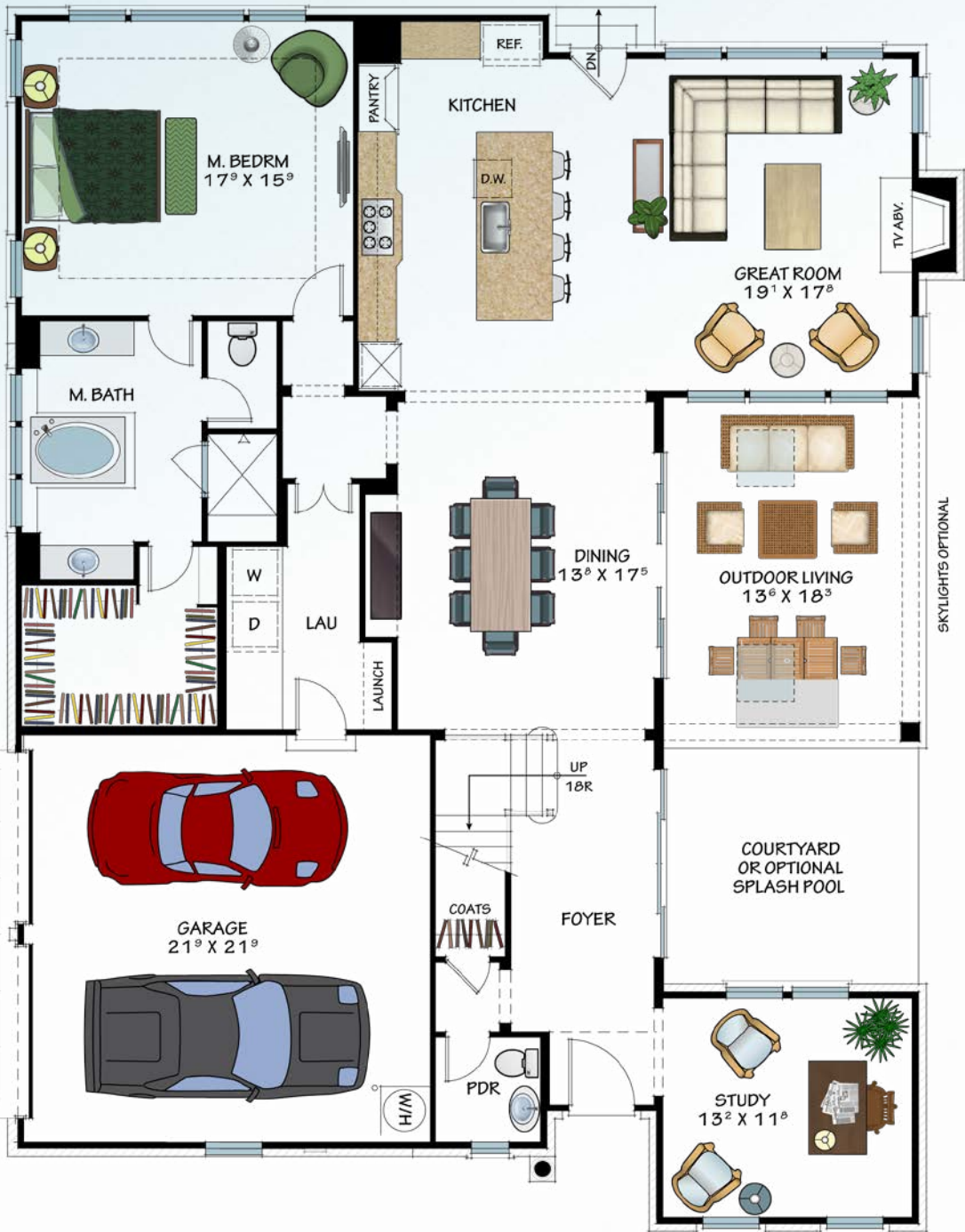
3 Beds • 3 Full Baths • 1 Half Baths • Master Down • 2-car Garage




SIMONINI
simonini.com

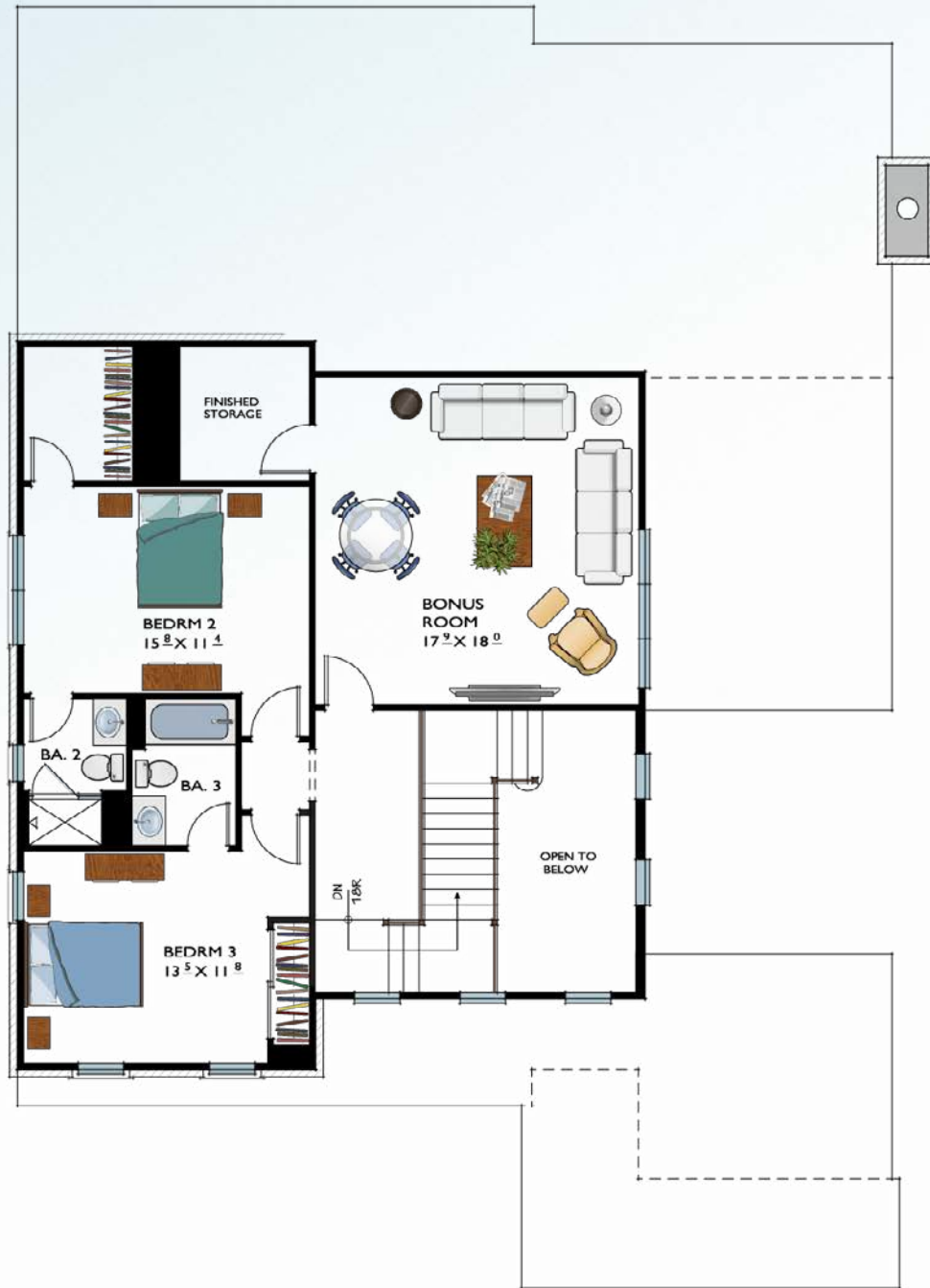
ARTIST'S RENDERINGS; PLANS MAY VARY

THE COLLIN
MAIN LEVEL



SKYLIGHTS OPTIONAL

THE COLLIN
UPPER LEVEL



THE COLLIN



SIMONINI

Simonini Homes LLC

501 East Morehead Street, Suite 4 • Charlotte NC 28202

tel: 704.333.8999 fax: 704.896.3630

website: simonini.com email: john@simonini.com



All floorplans and elevations are the property of the architect and Simonini Homes and may not be reproduced. All plans, renderings, drawings, specifications, materials and availability are subject to change without notice. The information presented here is not intended for use during purchasing and is for illustration use only. Please consult sealed construction documents and construction specifications for official details.

© Copyright 2014 Simonini Homes LLC, Charlotte, NC All rights reserved.