

THE JETTON

4 Beds • 4 Full Baths • 0 Half Baths • Master Up • 2-car Garage

JETTON A



JETTON B



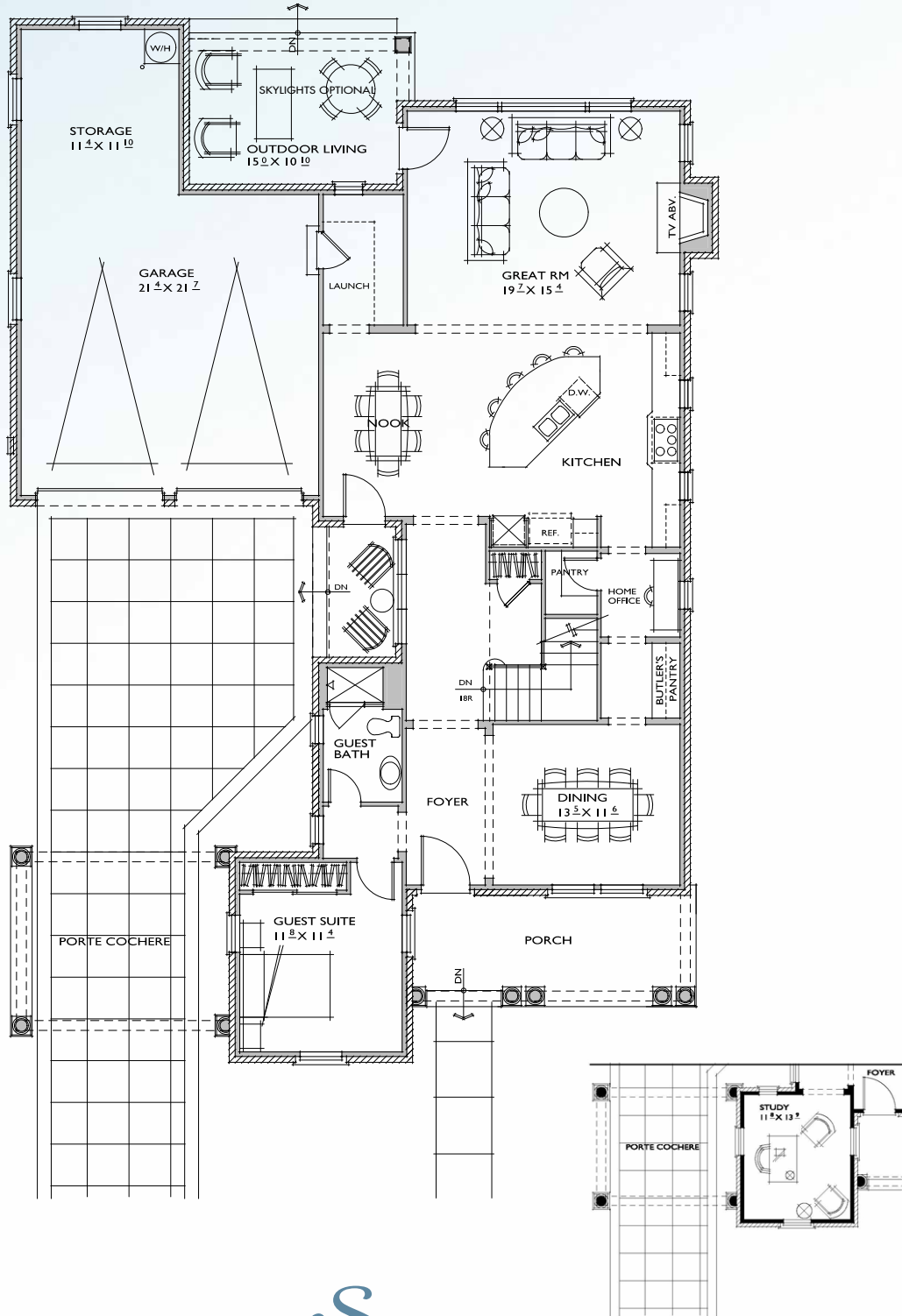
JETTON C



ALANSIMONINI HOMES

alansimoninihomes.com

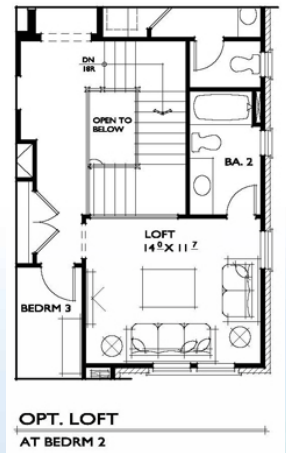
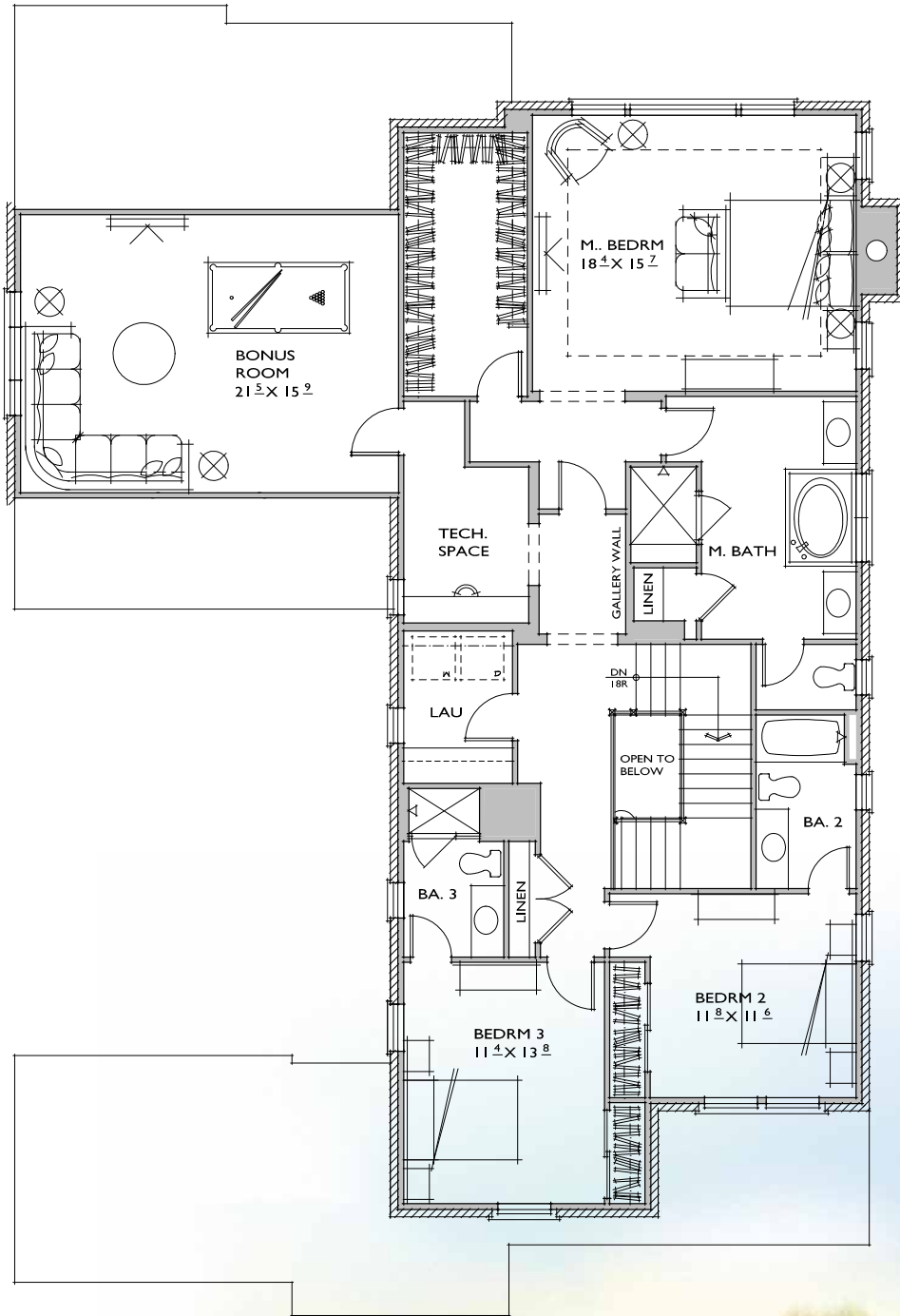
THE JETTON
MAIN LEVEL



OPT. STUDY
AT GUEST SUITE



THE JETTON
UPPER LEVEL



THE JETTON



ALAN SIMONINI HOMES

Alan Simonini Homes LLC
 501 East Morehead Street, Suite 4 • Charlotte NC 28202
 tel: 704.333.8999 fax: 704.896.3630
 website: alansimoninihomes.com email: info@alansimoninihomes.com



All floorplans and elevations are the property of the architect and Alan Simonini Homes and may not be reproduced. All plans, renderings, drawings, specifications, materials and availability are subject to change without notice. The information presented here is not intended for use during purchasing and is for illustration use only. Please consult sealed construction documents and construction specifications for official details.