

THE SARDIS

3 Beds • 3 Full Baths • 1 Half Baths • Master Down • 2-car Garage

SARDIS A



SARDIS B



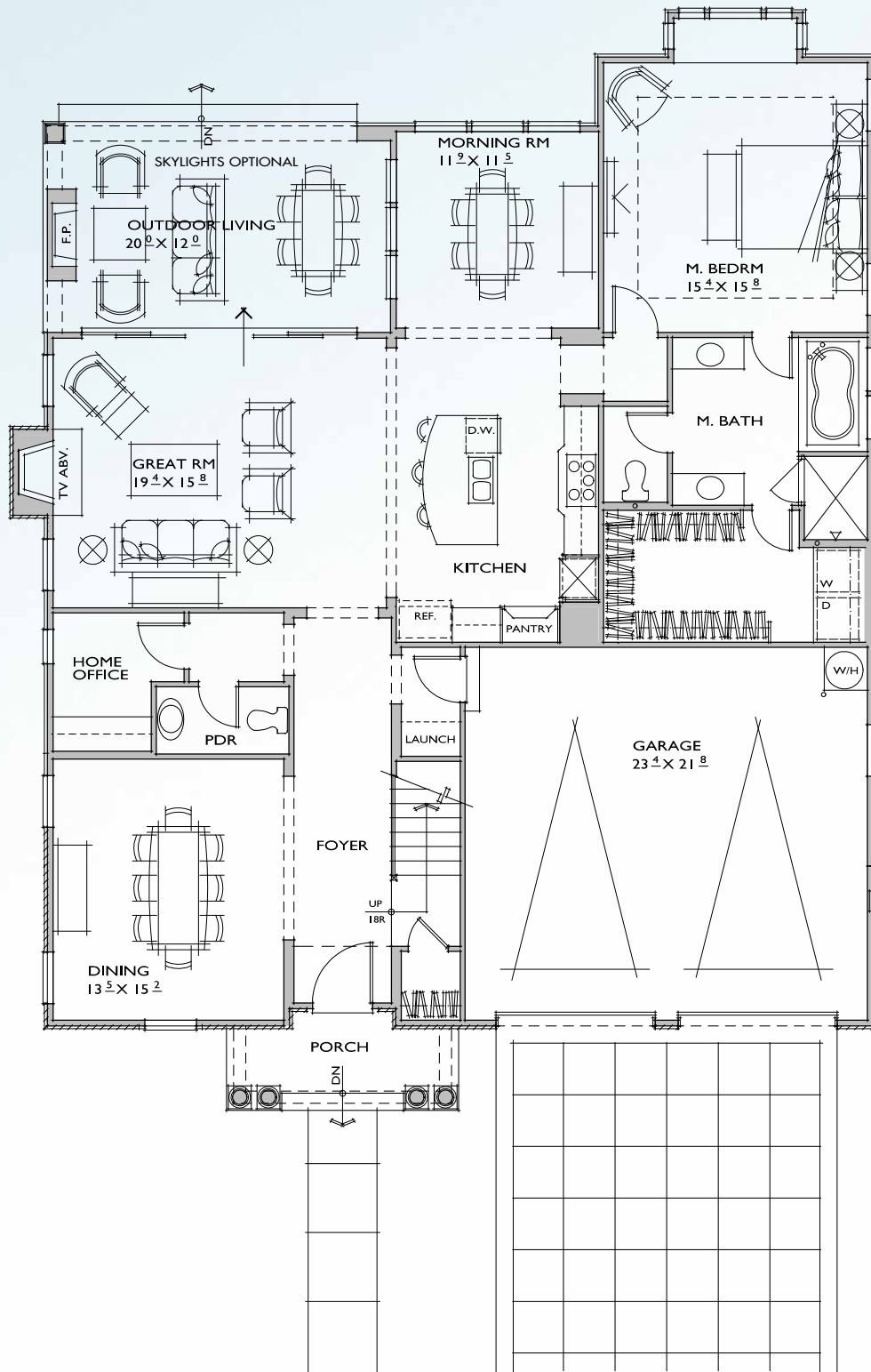
SARDIS C



ALANSIMONINIHOMES

alansimoninihomes.com

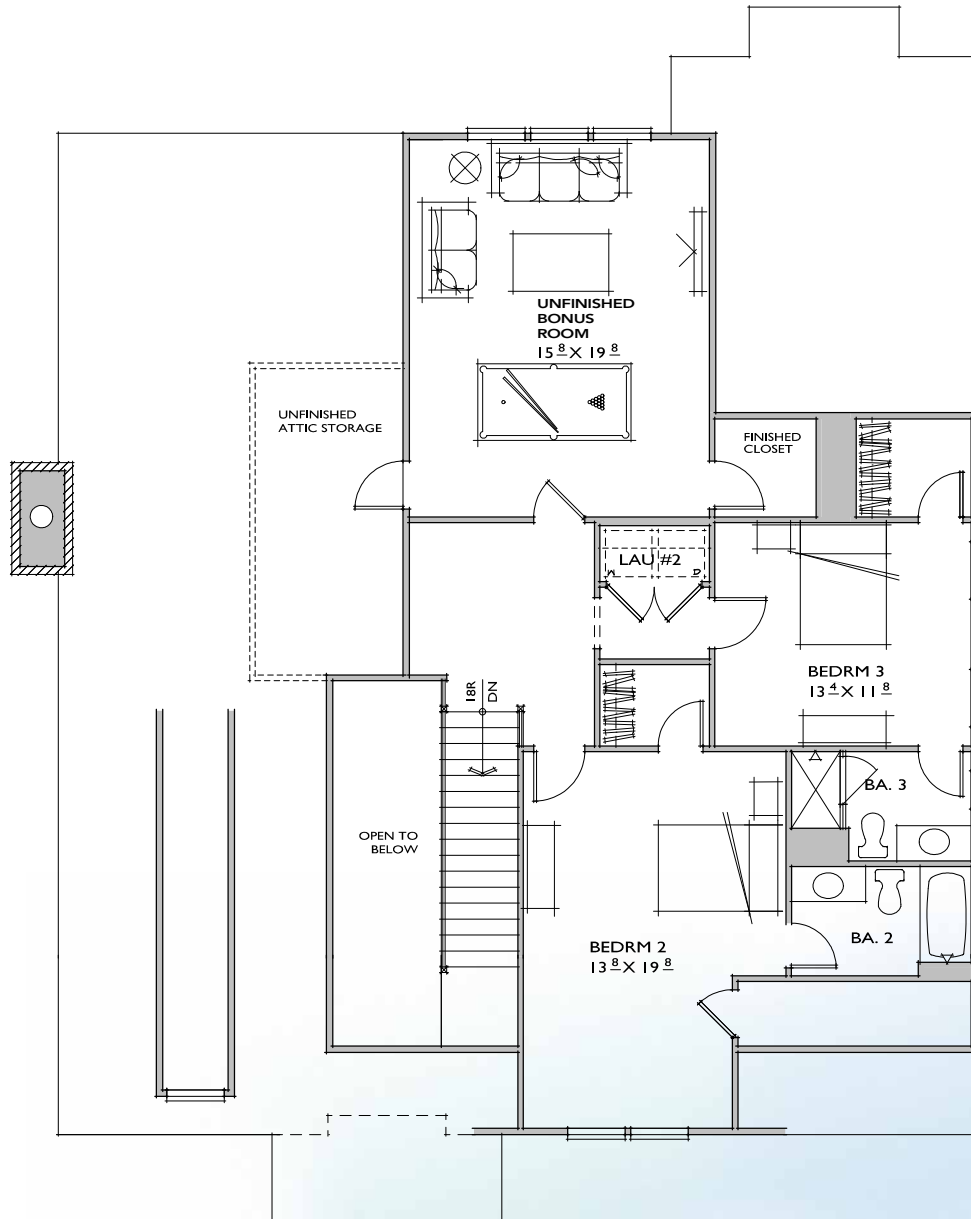
THE SARDIS
MAIN LEVEL



ALAN SIMONINI HOMES

alansimoninihomes.com

THE SARDIS
UPPER LEVEL



THE SARDIS



Alan Simonini Homes LLC
 501 East Morehead Street, Suite 4 • Charlotte NC 28202
 tel: 704.333.8999 fax: 704.896.3630
 website: alansimoninihomes.com email: info@alansimoninihomes.com



All floorplans and elevations are the property of the architect and Alan Simonini Homes and may not be reproduced. All plans, renderings, drawings, specifications, materials and availability are subject to change without notice. The information presented here is not intended for use during purchasing and is for illustration use only. Please consult sealed construction documents and construction specifications for official details.