

TINSLEY

Tinsley A: 3731 sq. ft. • 4 Bedrooms • 3.5 Baths • Master Down • 3-car Garage

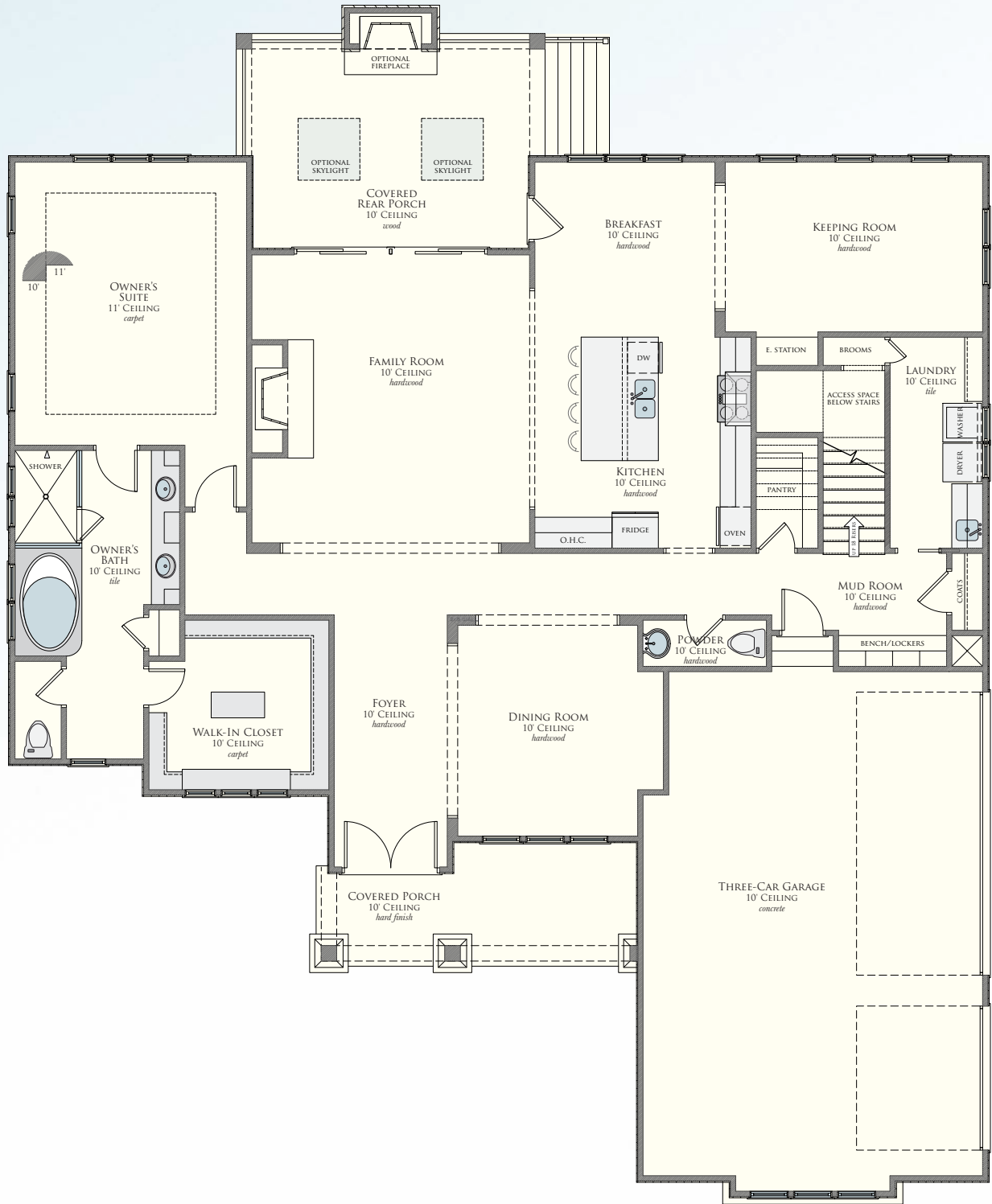


Tinsley B: 3731 sq. ft. • 4 Bedrooms • 3.5 Baths • Master Down • 3-car Garage
plus optional full guest suite on lower level (4290 sq. ft.)

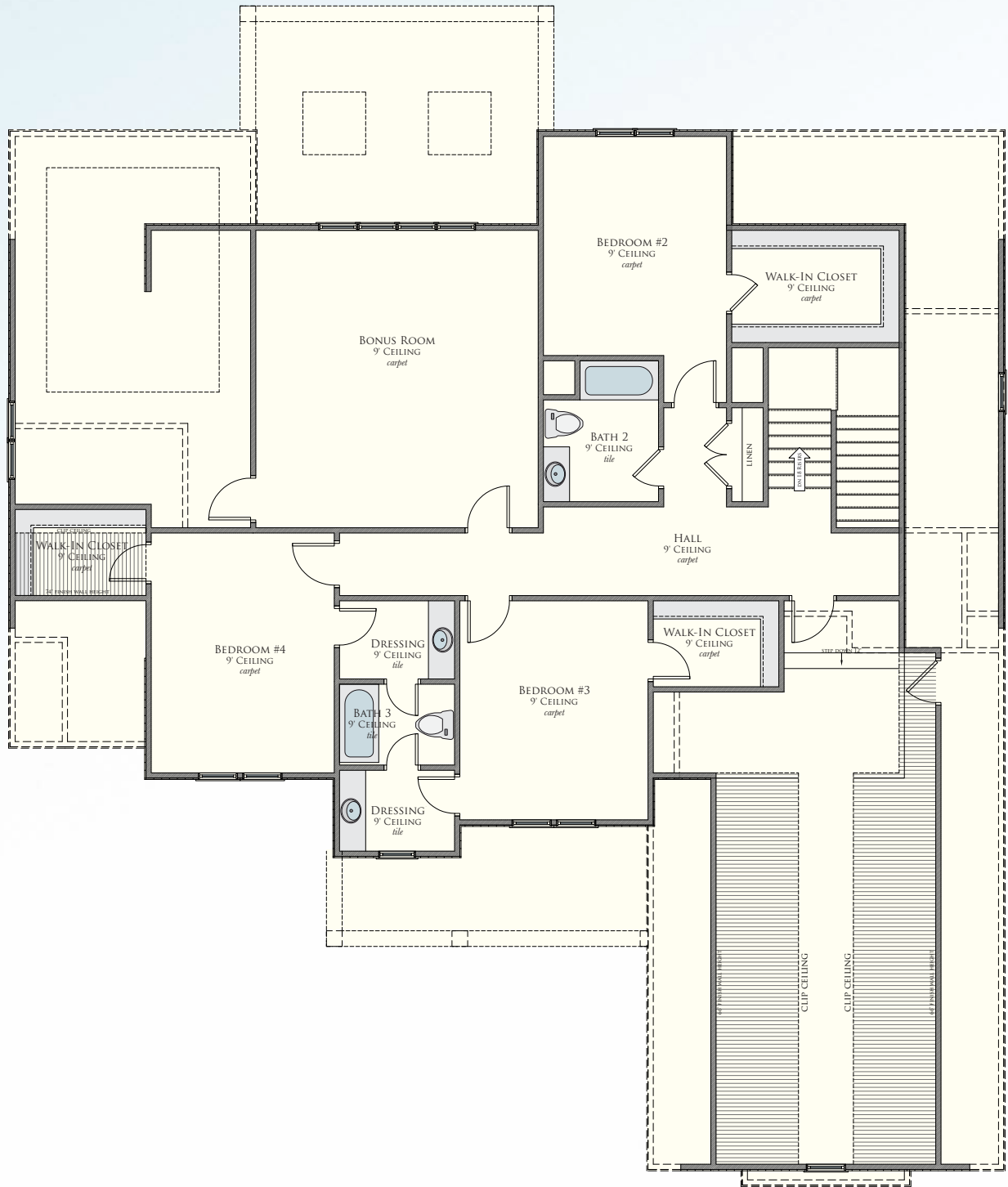



SIMONINI
simonini.com

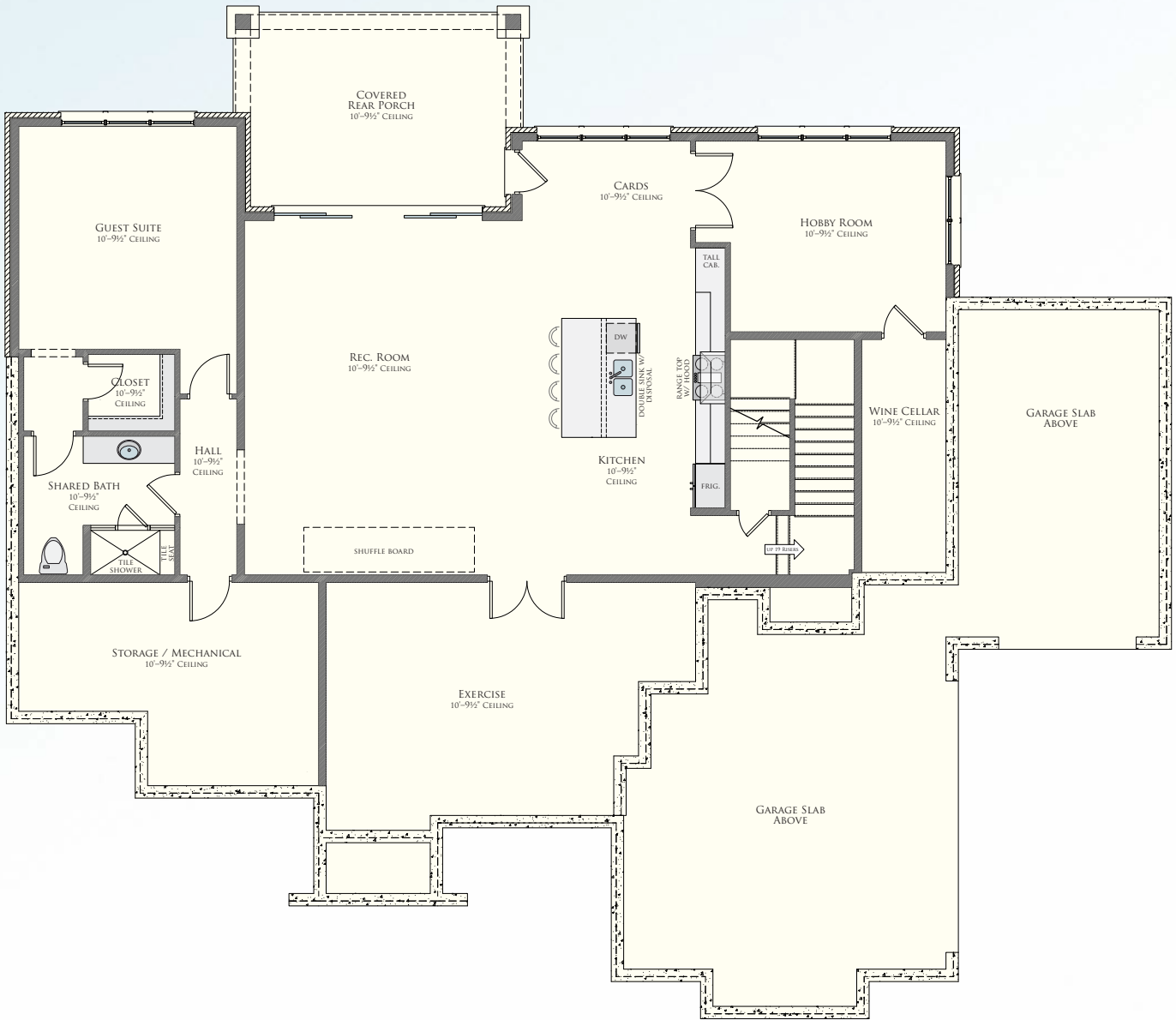
TINSLEY A
MAIN LEVEL



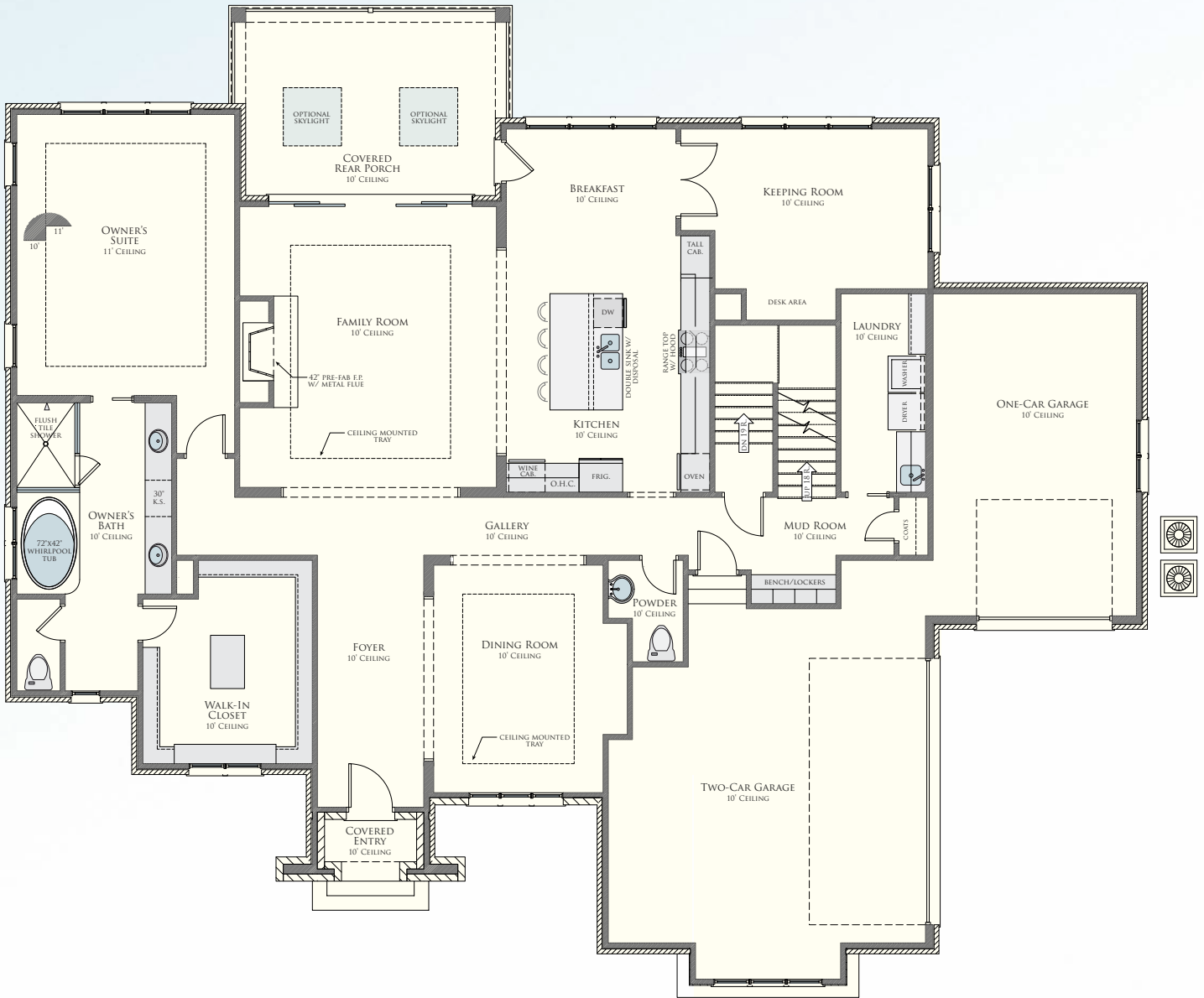
TINSLEY A
UPPER LEVEL



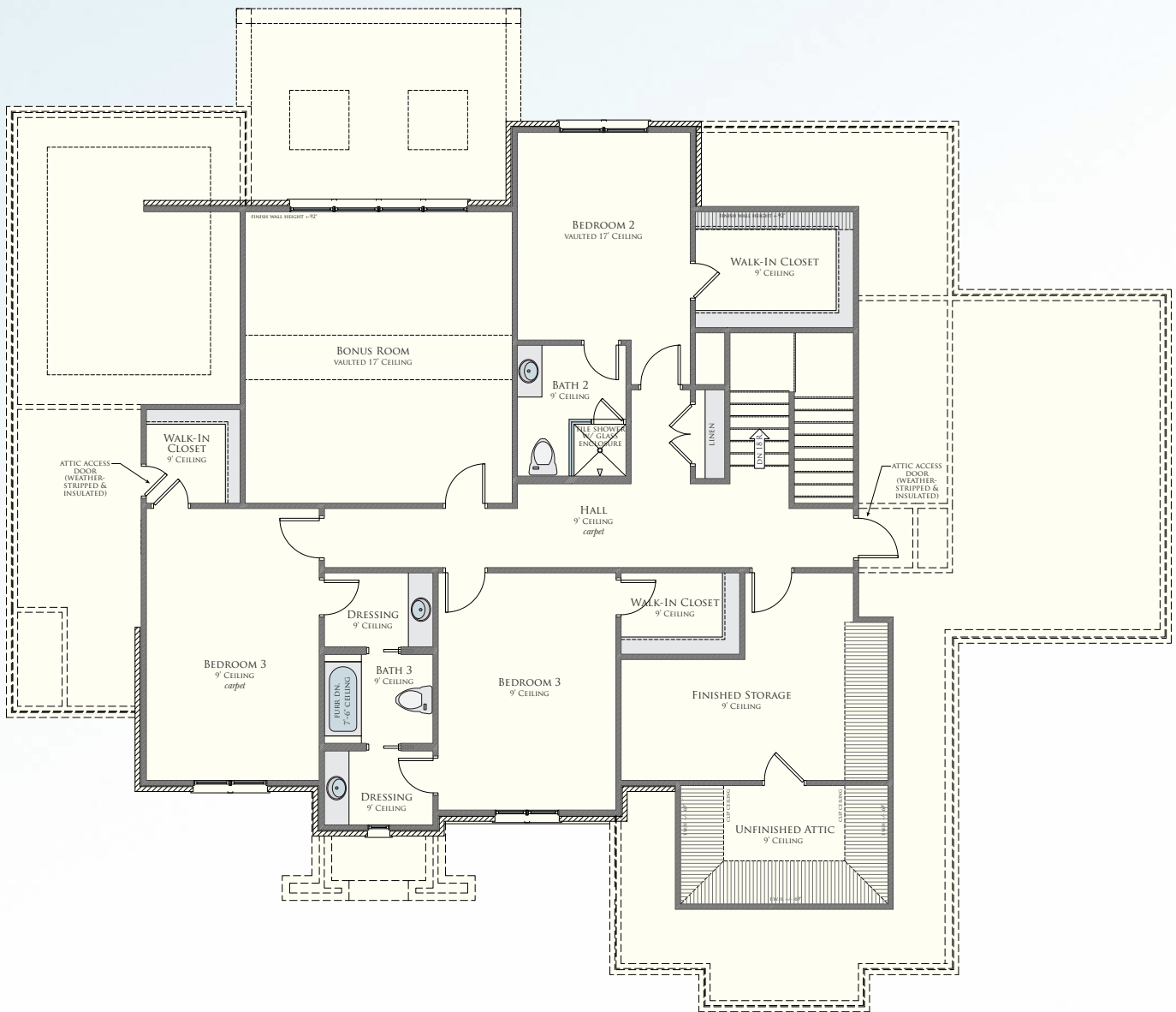
TINSLEY B
OPTIONAL LOWER LEVEL



TINSLEY B
MAIN LEVEL



TINSLEY B
UPPER LEVEL



SIMONINI

Simonini Homes LLC

501 East Morehead Street, Suite 4 • Charlotte NC 28202

tel: 704.333.8999 fax: 704.896.3630

website: simonini.com email: john@simonini.com



All floorplans and elevations are the property of the architect and Alan Simonini Homes and may not be reproduced. All plans, renderings, drawings, specifications, materials and availability are subject to change without notice. The information presented here is not intended for use during purchasing and is for illustration use only. Please consult sealed construction documents and construction specifications for official details.