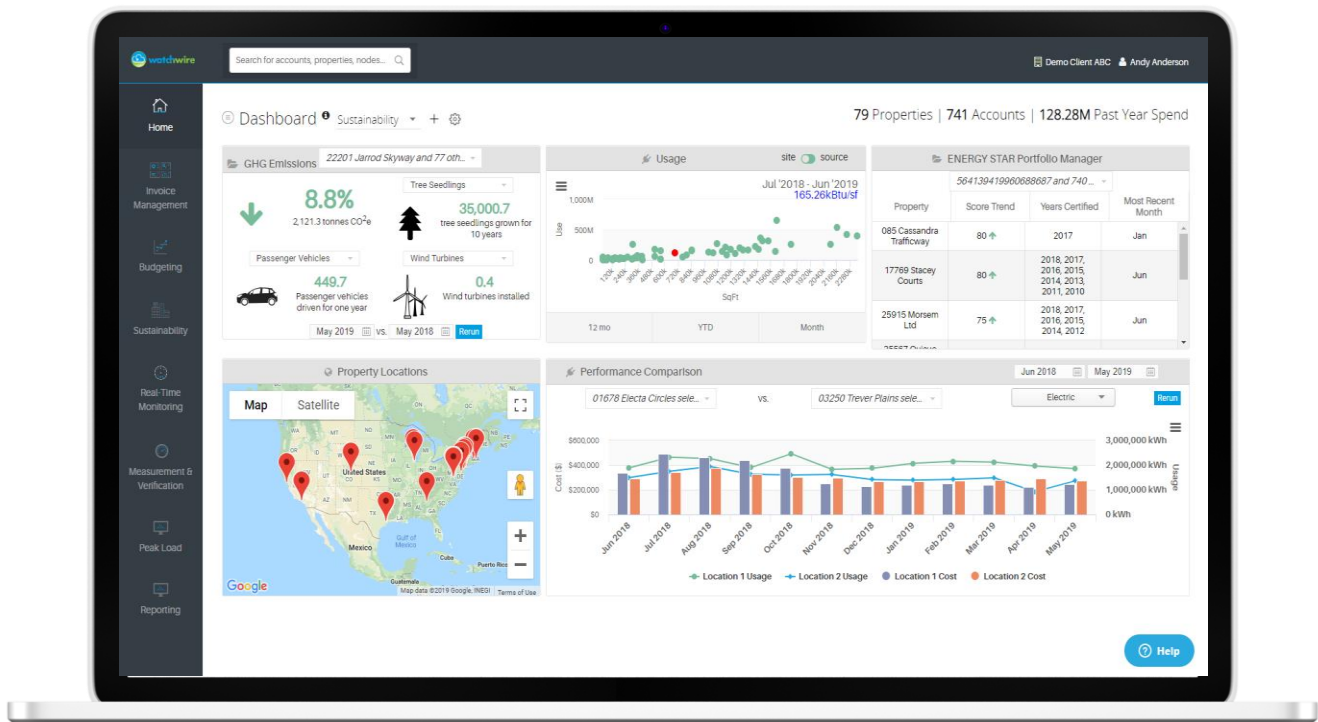




# watchwire

## Cloud-Based Energy Management Solution



Energy is the number one most controllable expense for real estate. Yet understanding utilities is increasingly difficult, time consuming, and expensive.

## ISSUE:

Buildings in the US spend >\$450bn annually on energy and represent 40% of energy consumption & emissions.

## SOLUTION:

**watchwire** makes energy data management and monitoring easier by offering your team a deeper level of energy analytics for today's requirements.



## Challenges **watchwire** solves:

Manual reporting with high administrative costs and limited insights

Dark data – siloed with various service providers

Difficulty identifying efficiency projects and predicting ROI

Sustainability reporting requirements

& more...



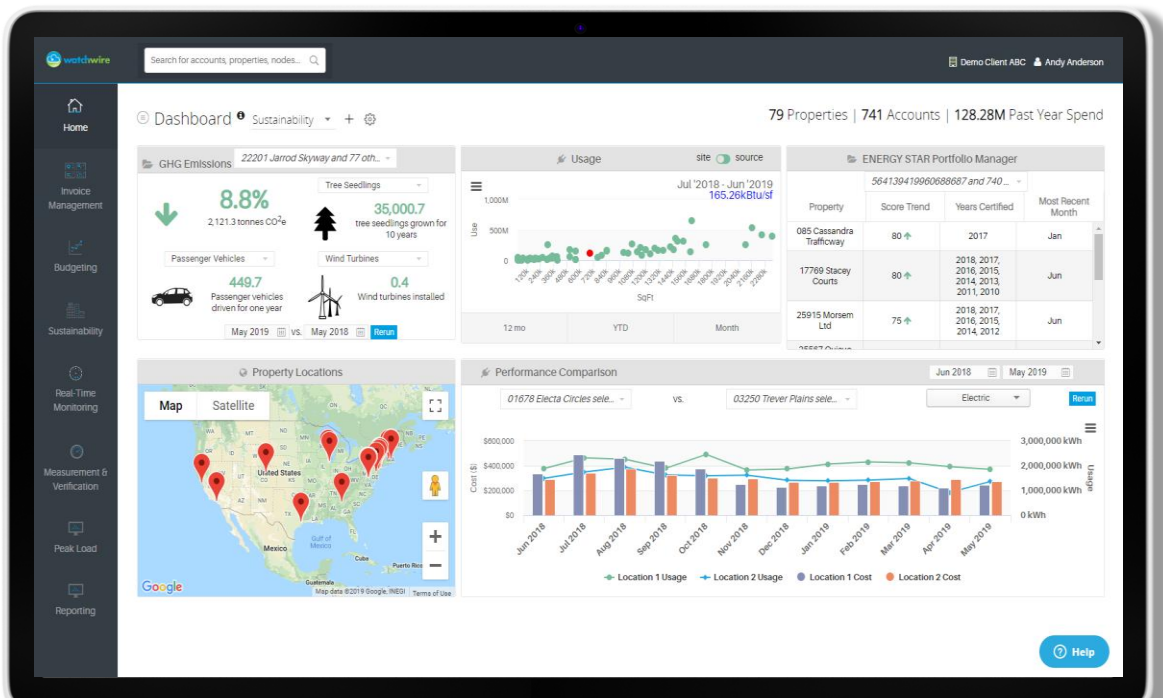


# watchwire

## Features

### *Customizable Dashboard*

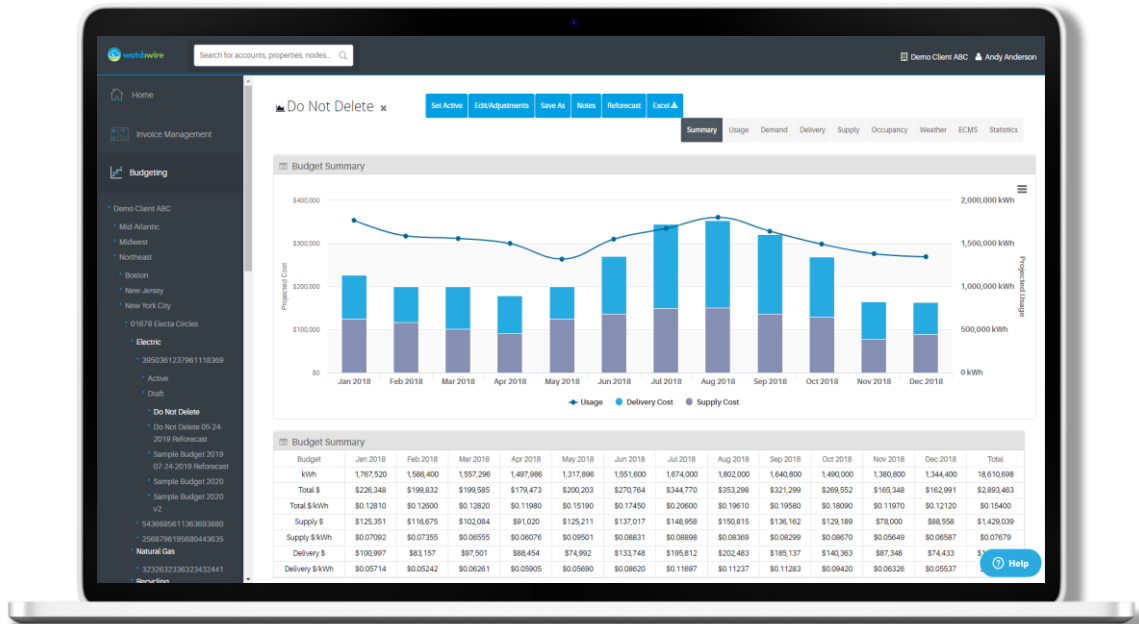
- High level view of your individual KPIs
- 20 different widget options for your dashboard
- Create, maintain & share customized dashboard views (i.e. for specific users, sustainability, engineering, etc.)



## Features:

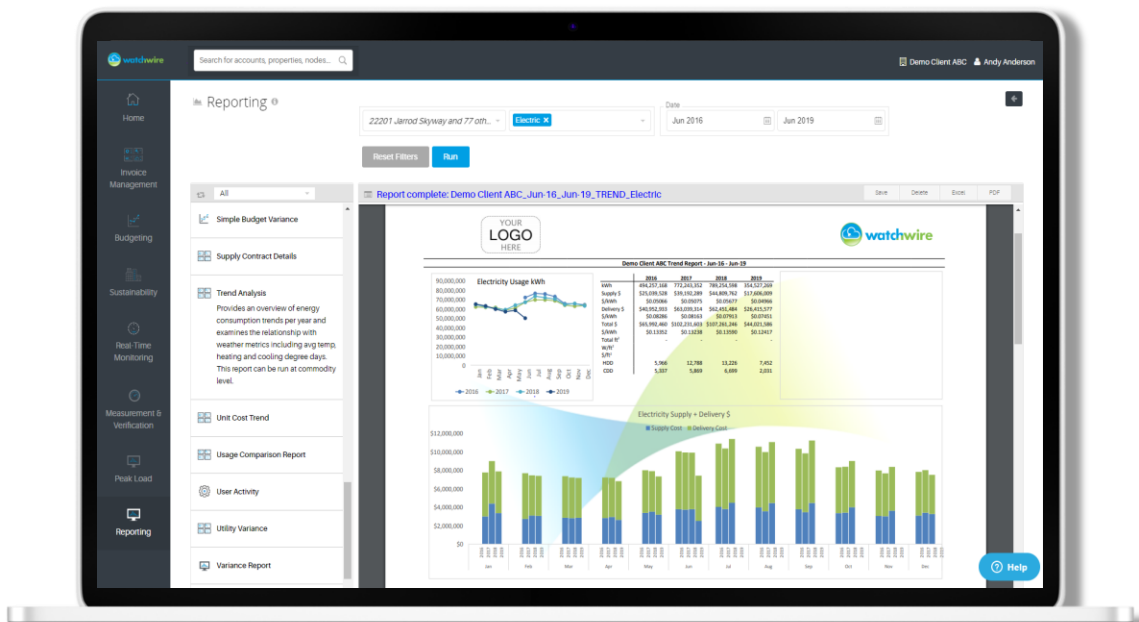
# Utility Budgeting

- Budget accurately based on proprietary consumption, forecasting algorithm, supply market projections, delivery tariff rates, and Public Service Commission rate cases
- Understand impact of lease activity, occupancy, weather, and efficiency projects
- Allocate capital efficiently



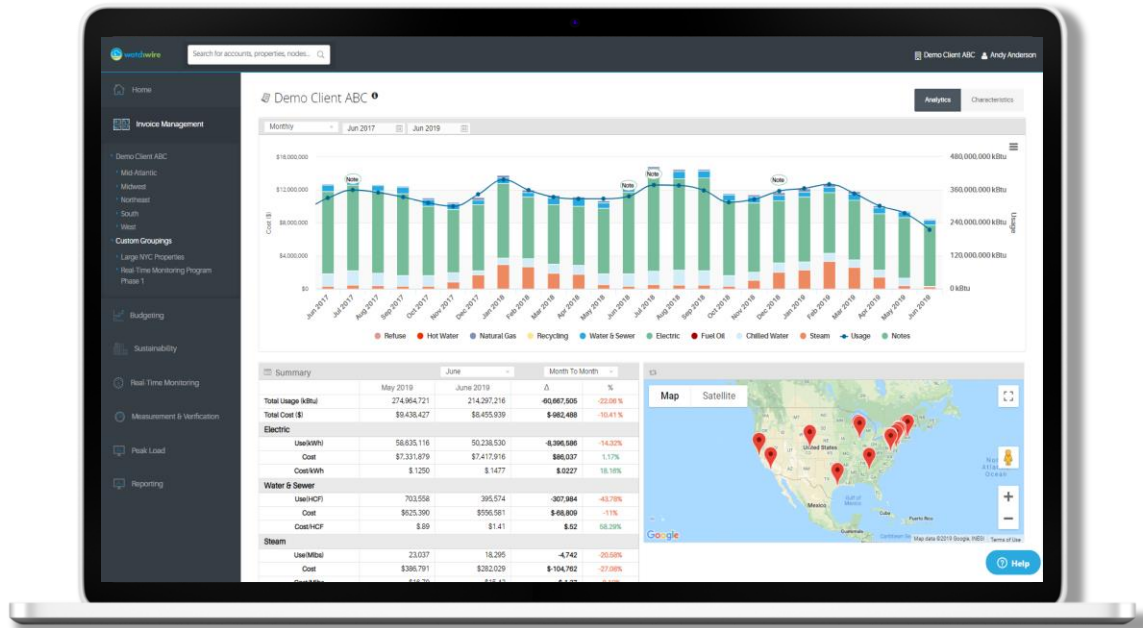
## Reporting

- Automated monthly reporting distribution
- Reports native to Excel – formatting not altered upon export
- Custom report development



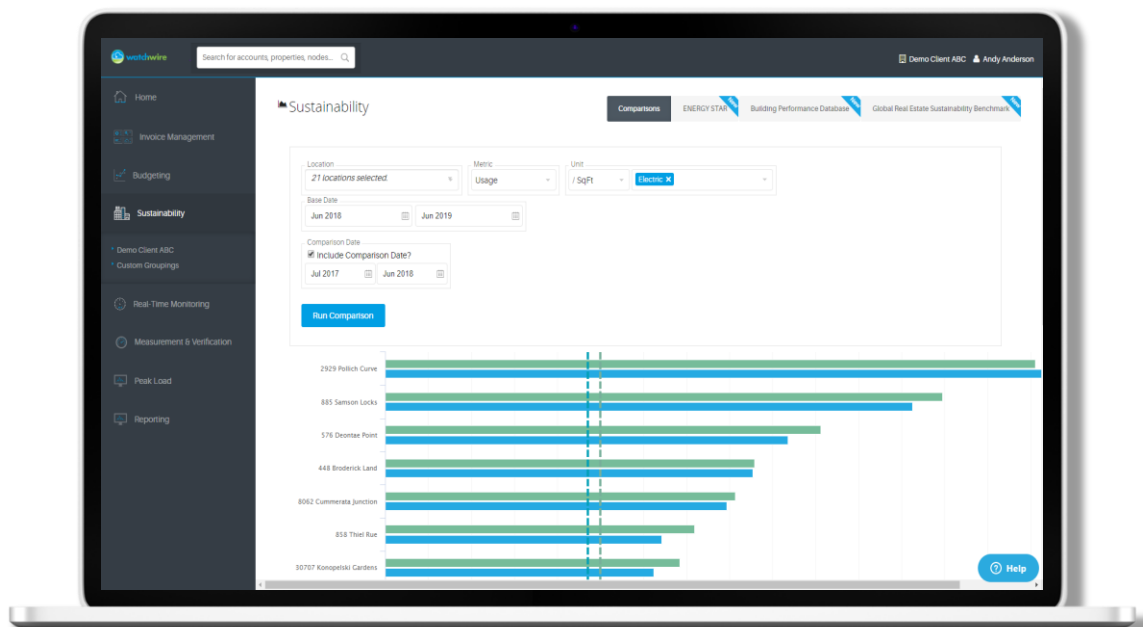
# Automated Invoice Data Consolidation

- Web-based centralized platform
- Building/facility region, portfolio consolidation
- Multiple currency tracking
- Unit conversions



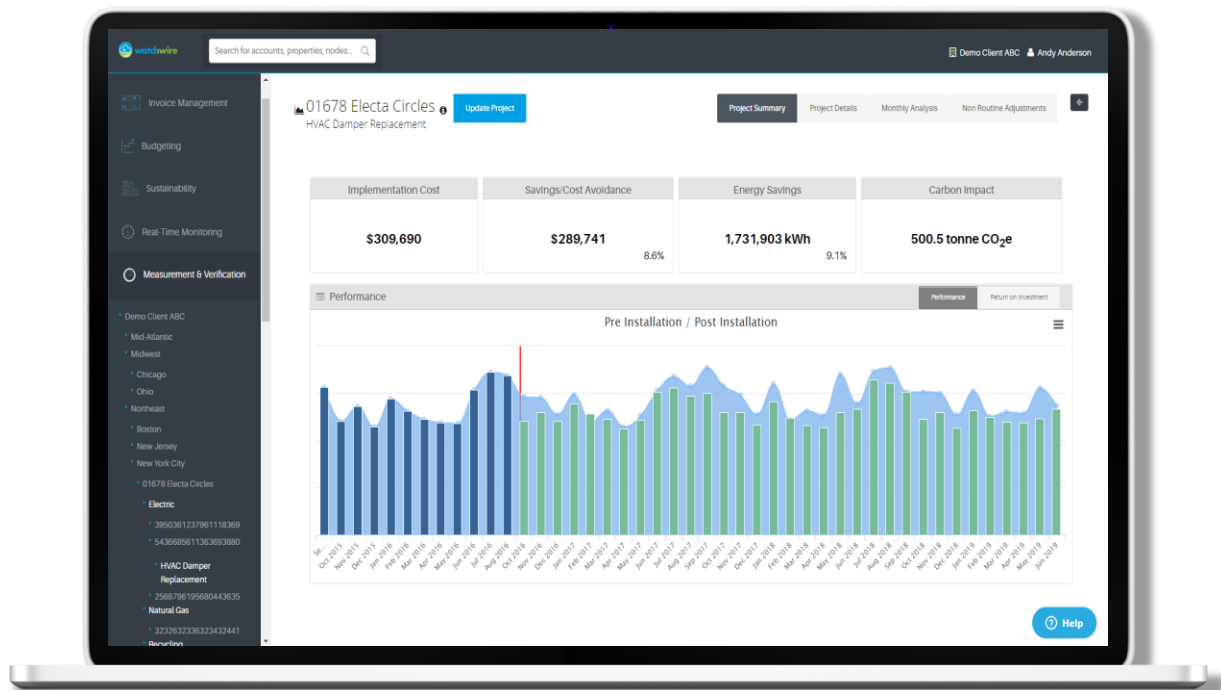
## Sustainability

- Custom benchmarking comparison of buildings and regions (consumption/demand/cost totals and KPIS)
- Integration with ENERGY STAR, GRESB, Department of Energy BPD
- Save “custom groupings” manually or determined by property characteristics



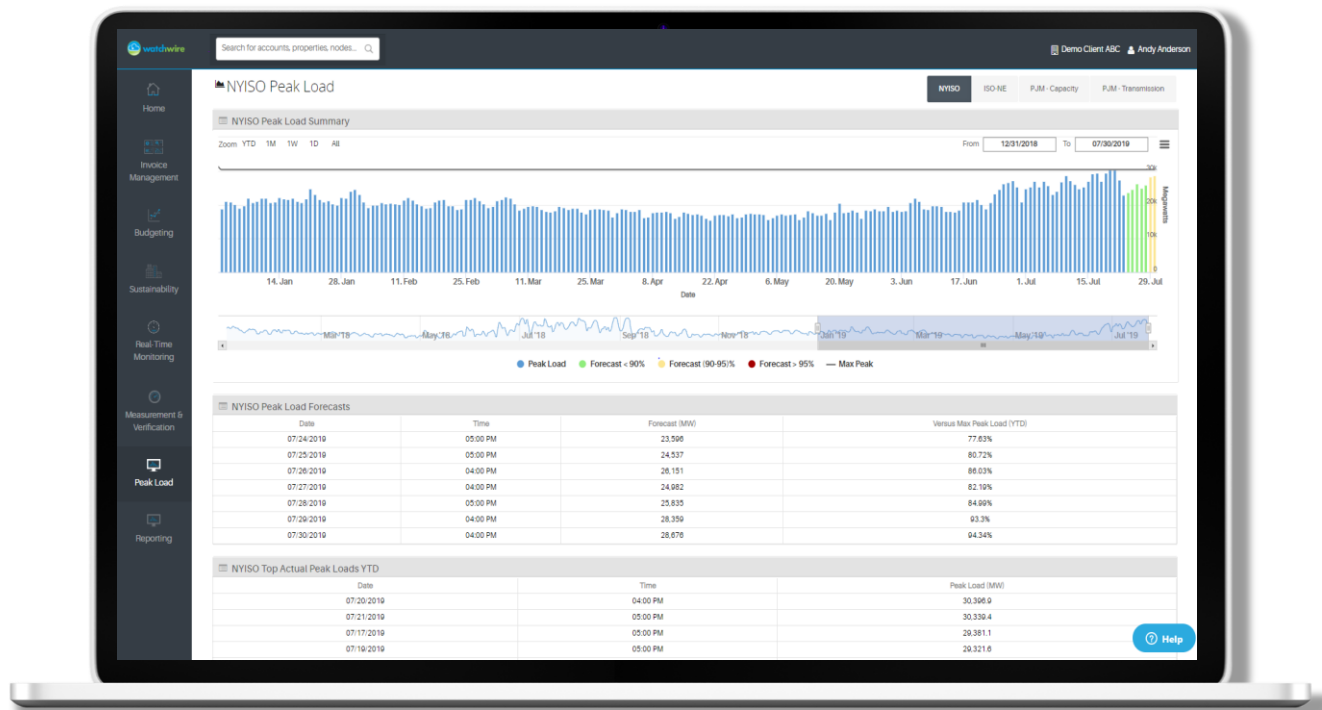
# Measurement & Verification

- ASHRAE Guideline 14-2014 & IPMVP Compliant Option B & C
- Track multiple ECMs at once
- Normalize project analyses for weather, billing period length, occupancy, & more
- Verify performance and track ROI



# Peak Load Notifications

- Predictive analytics alert you when peak load hours are likely to occur
- Track, measure, and verify the performance of your peak load management efforts



# Why **watch**wire?

- Reduce administrative costs
- Reduce energy costs
- Validate energy conservation measures
- Manage energy risk
- Explain variances

## Actionable Insights, Not Just More Energy Data

“ The system is extremely user friendly and provides valuable information at your finger tips  
-Director of Operations, Commercial Real Estate

“ Offers a variety of ways to sort and review pertinent data and the database is fairly extensive and goes back several years. Reports are easy to read and the data is accurate.

-Property Manager, Commercial Real Estate

“ Software is simple, informative, and intuitive... Best customer service I've ever received  
-Energy Engineer, Biotech R&D Campus





## About EnergyWatch:

EnergyWatch is a NYC based energy management software-as-a-service (EMSaaS) provider. Established in 2000 as one of the first consulting practices in the deregulated energy market in NYC, EnergyWatch has since expanded to help commercial and corporate real estate portfolios, Fortune 500 industrial/manufacturing and big box retail, government, healthcare, and educational facilities across the US reduce energy consumption, emissions, and expenses, simplify energy reporting, and measure and verify operational changes and capital projects.

Through our utility data analytics platform, **watchwire**, we acquire, audit, and consolidate utility invoice data, invoice images, and interval data across hundreds of utilities in 49 states and Mexico, representing >7,000 GWh of annual energy consumption and ~\$1 billion of annual energy spend.



**Schedule a Demo**