

# How to connect to an Azure Promotion cube

This guide shows you how to make a connection to your Promotion cube through Excel for the first time.

*The guide is only of relevance if have an Azure promotion cube.*

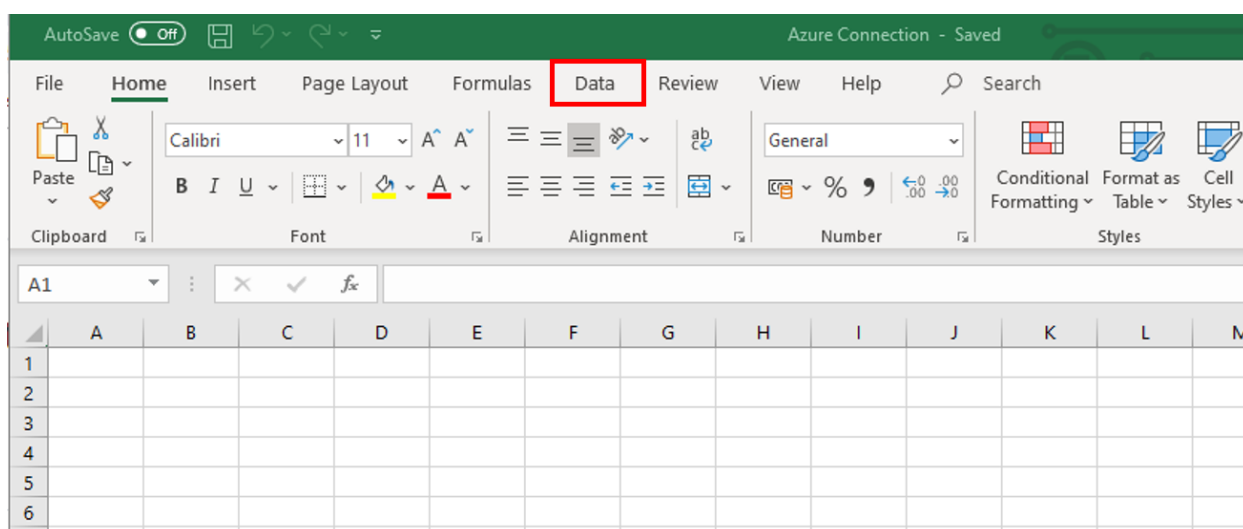


Open a new Excel folder and follow the steps below.  
*This guide is based on Microsoft365.*

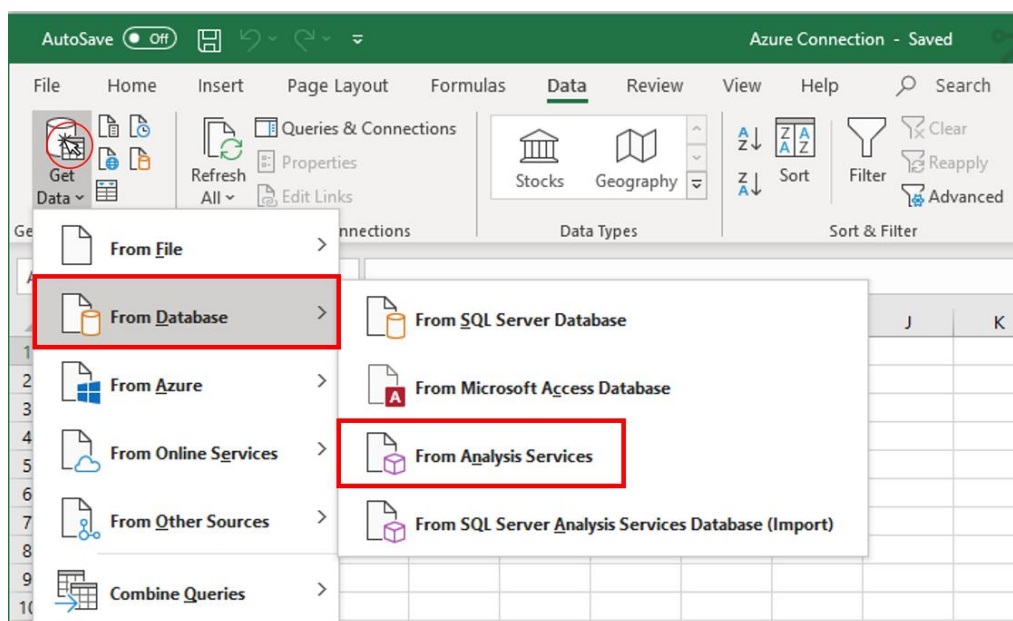
## How to connect to an Azure Promotion cube

If you have an Azure POS cube, you must follow these steps below to connect to your promotion cube.

1. In the tab list press *Data*.



2. In the ribbon, press *Get Data*, then select *From database* and pick *From Analysis Services*.



**3.** In the pop-up window, insert the server name for effectmanager Azure cubes.

Fill out the information, as shown below:

**Server name:**

asazure://northeurope.asazure.windows.net/effectmanager

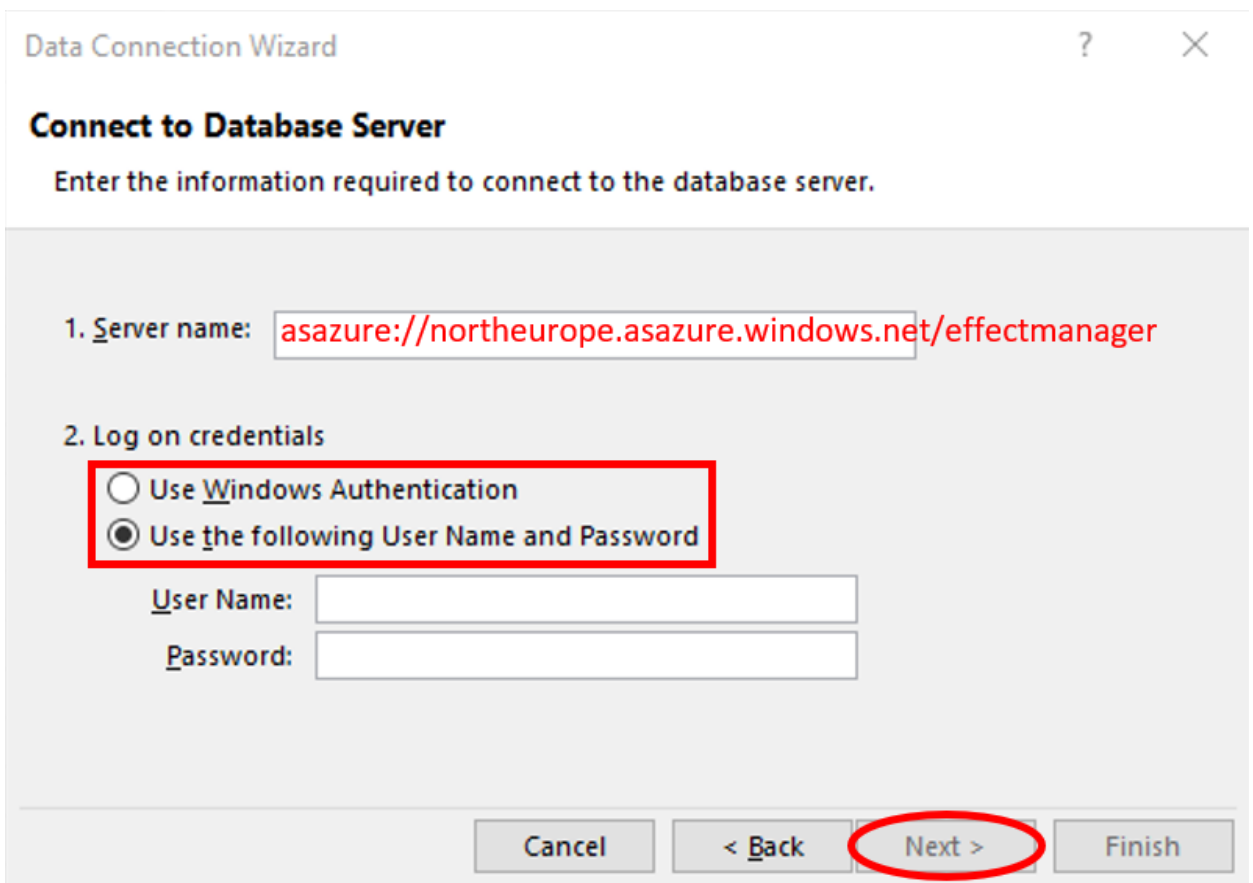
**4.** Enter your username and password and press *Next*.

If you can log in with *Windows Authentication*, we recommend this.

If not make sure *Use the following Username and Password* is selected.

**Username:** your email

**Password:** The password used for your email account/office 365 account.



Data Connection Wizard

**Connect to Database Server**  
Enter the information required to connect to the database server.

1. Server name: asazure://northeurope.asazure.windows.net/effectmanager

2. Log on credentials

Use Windows Authentication

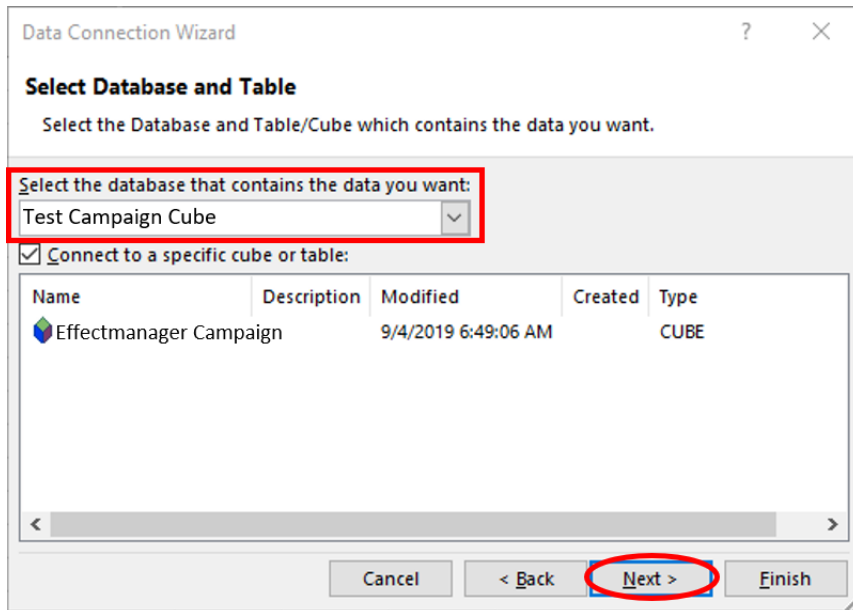
Use the following User Name and Password

User Name:

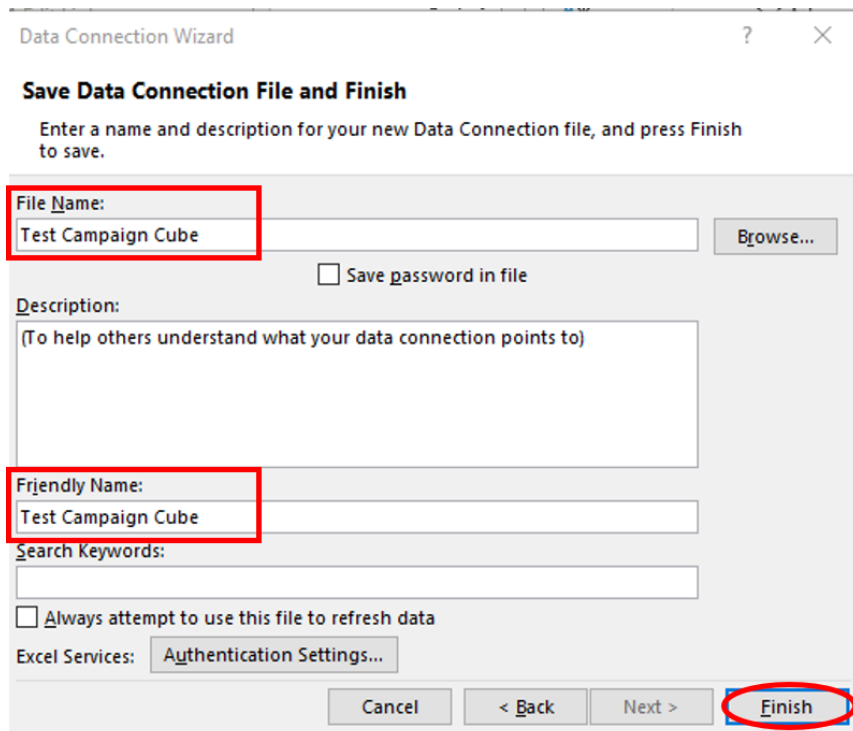
Password:

Cancel < Back **Next >** Finish

5. In the next window, select the database *Your-Company-Name* Campaign Cube - and press *Next*.  
Your window should be preset to look like below, but make sure it does before moving on.



6. In the next window, the setting should look like below - You can edit *Friendly Name* before checking the information and pressing *Finish*.



7. In your Excel-file a new pop-up is visible, press *OK* to import data.

You have now connected to your Azure promotion cube in Excel and is ready to start working with Pivot tables.

