

# How to connect to an Azure cube in Excel

This guide shows you how to make a connection to your Azure cube through Excel for the first time.

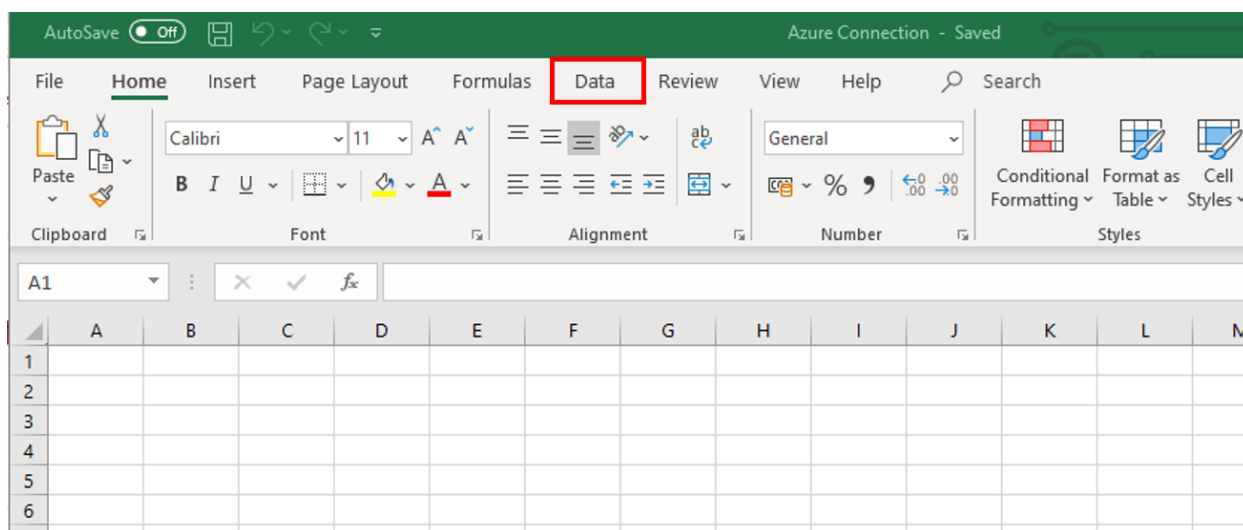


Open a new Excel folder and follow the steps below.  
*This guide is based on Microsoft365.*

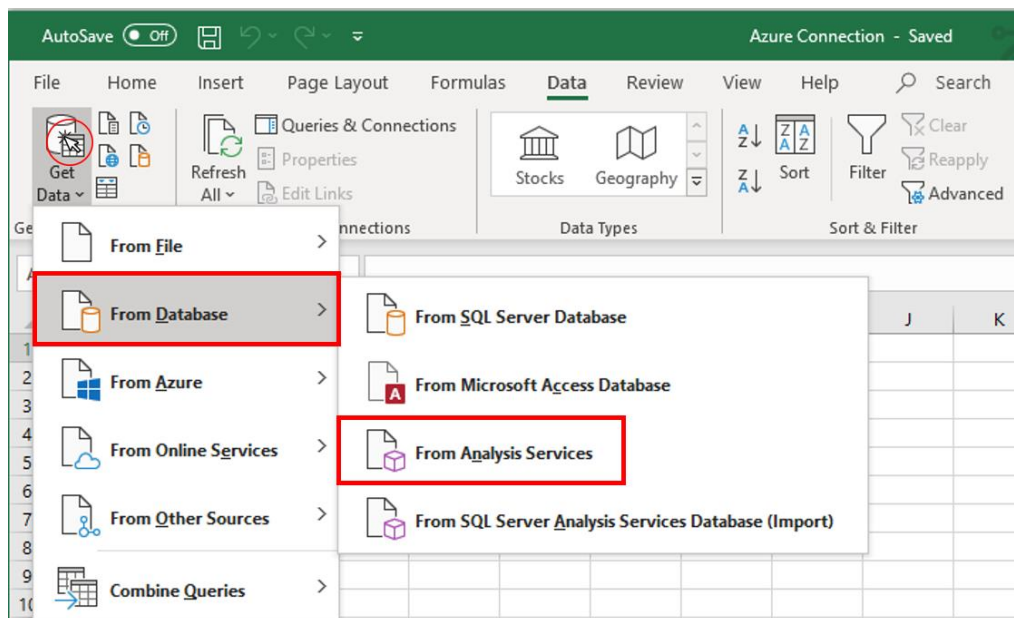
## Add Azure connection in Excel

If you have an Azure POS cube, you must follow these steps below to connect to your POS cube.

1. In the tab list press *Data*.



2. In the ribbon, press *Get Data*, then select *From database* and pick *From Analysis Services*.



**3.** In the pop-up window, insert the server name for effectmanager Azure cubes.

Fill out the information, as shown below:

**Server name:**

asazure://northeurope.asazure.windows.net/effectmanager

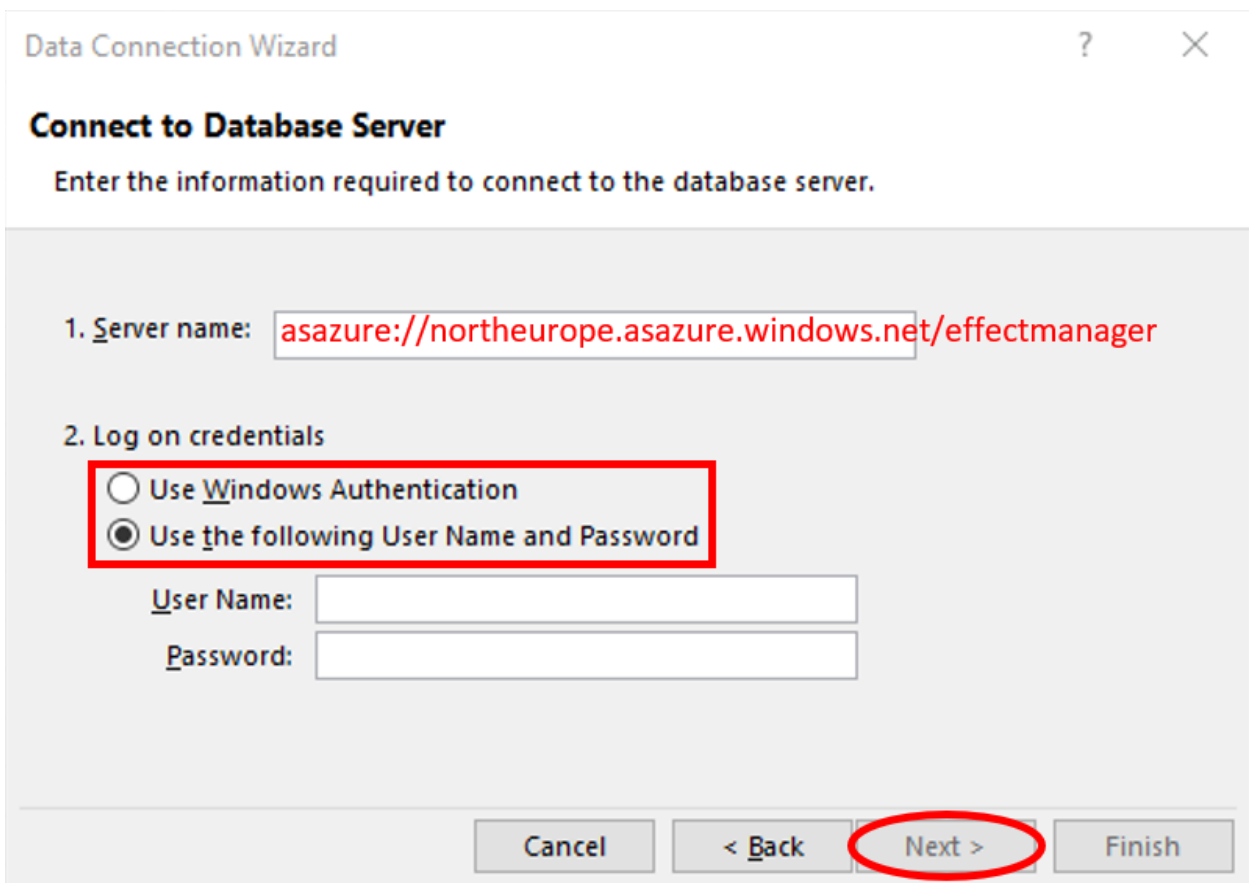
**4.** Enter your username and password and press *Next*.

If you can log in with *Windows Authentication*, we recommend this.

If not make sure *Use the following Username and Password* is selected.

**Username:** your email

**Password:** The password used for your email account/office 365 account.



Data Connection Wizard

**Connect to Database Server**

Enter the information required to connect to the database server.

1. Server name: asazure://northeurope.asazure.windows.net/effectmanager

2. Log on credentials

Use Windows Authentication

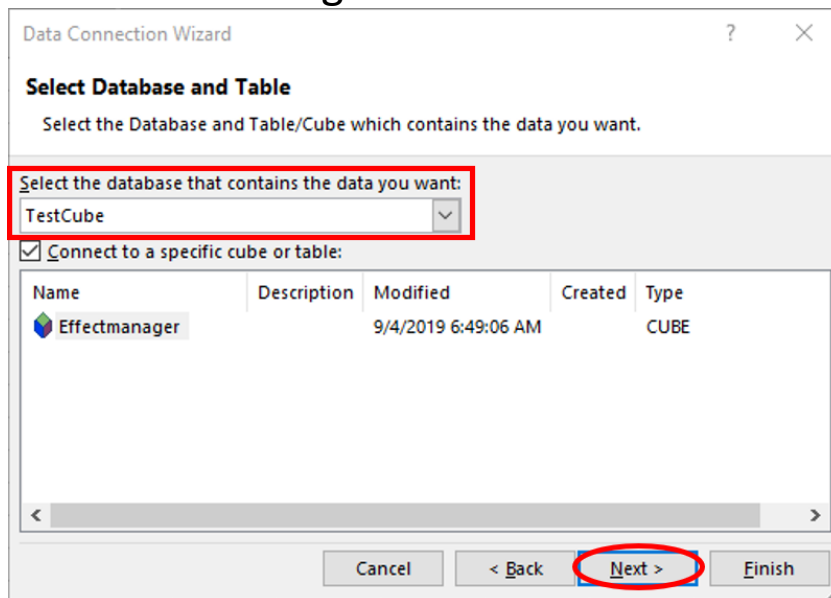
Use the following User Name and Password

User Name:

Password:

Cancel < Back **Next >** Finish

5. In the next window, select your database and press *Next*. Your window should be preset to look like below, but make sure it does before moving on.

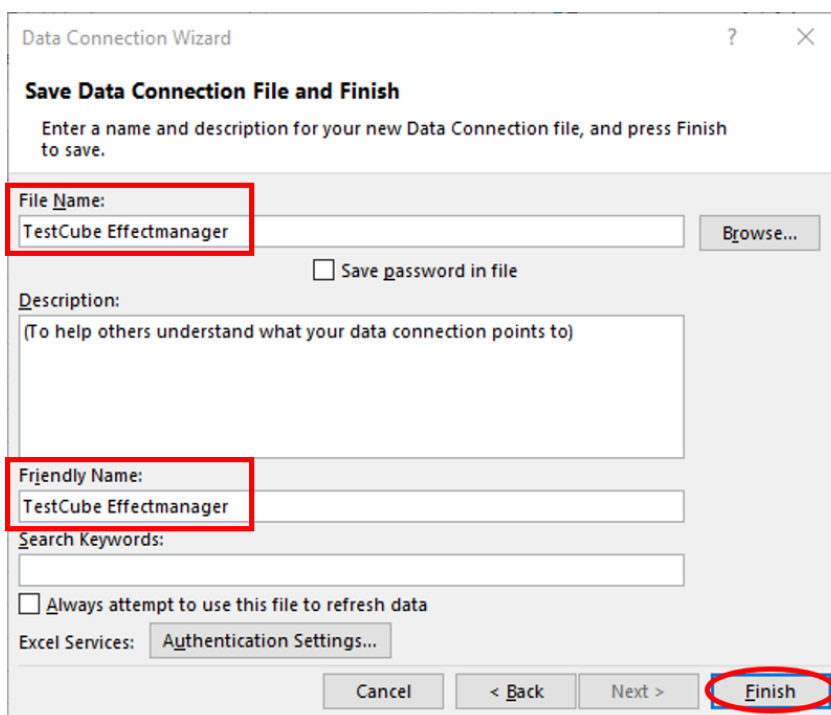


6. In the next window, the setting should look like below - check it before pressing *Finish*.

You can rename your connection if you wish.

**File Name:** renames the connection string

**Friendly Name:** renames the connection name.



7. In your Excel-file a new pop-up is visible, press *OK* to import data.

You have now connected to your Azure cube in Excel and is ready to start working with Pivotable.

