

How to manually create products Retail Chains export file

This guide shows you how to manually create products in effectmanager - adding Retail Chains to products using an export file.



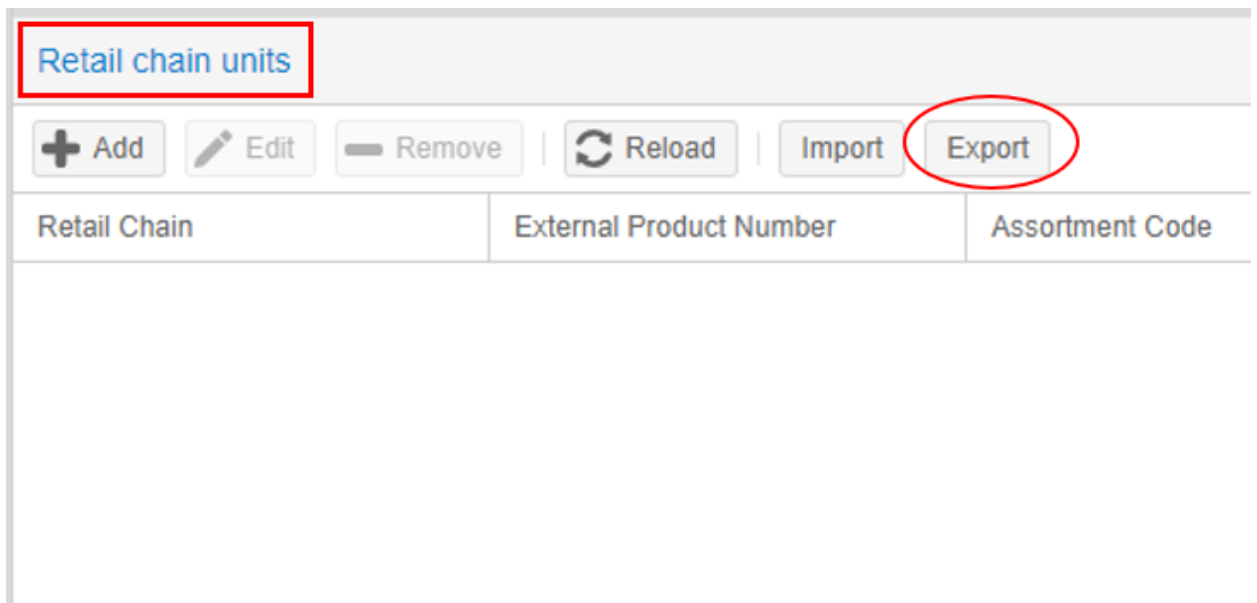
This guide is only of relevance if you have the promotion module in effectmanager.

If you want to add or edit several retail chains connected to products, you can do this by using the export/import of an Excel-file.

Add Retail Chains

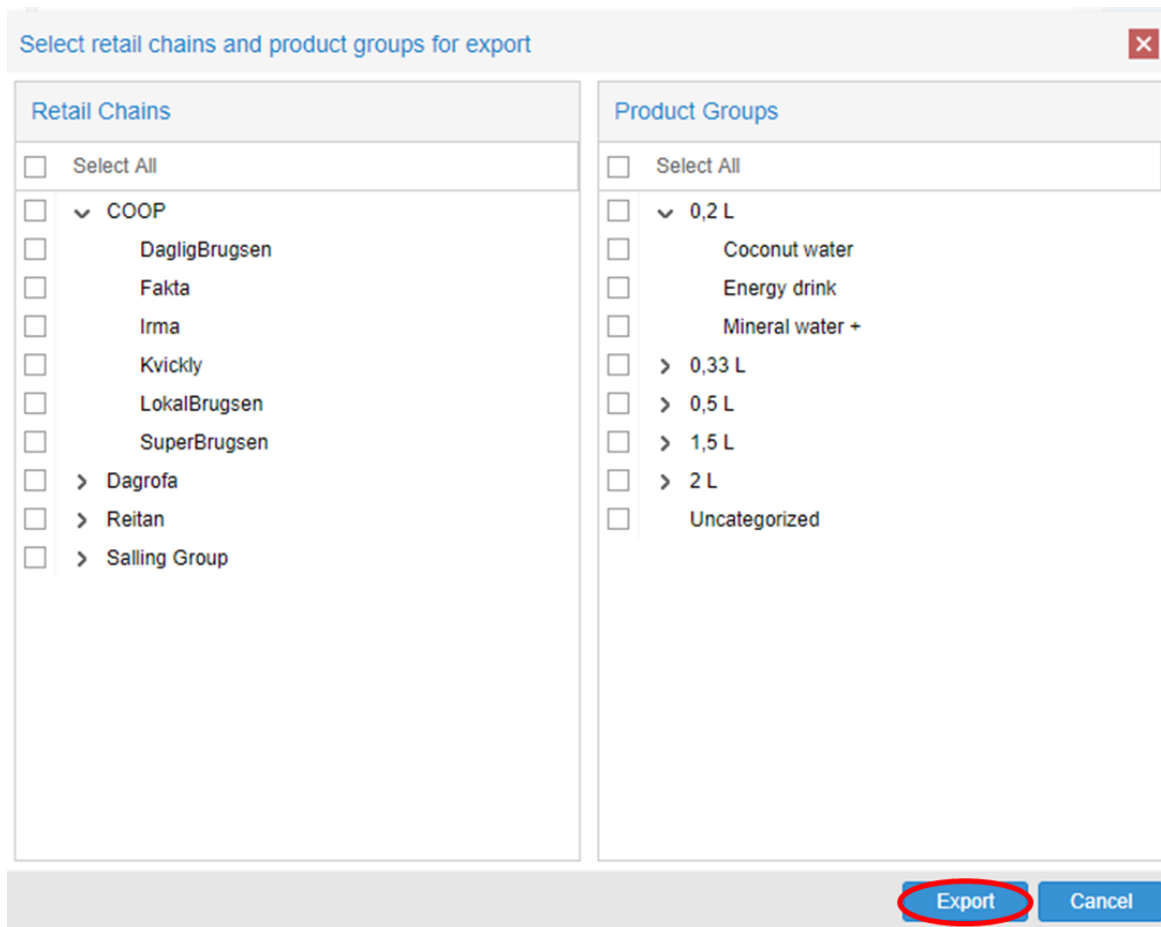
After creating a product, you need to add retail chains. To add retail chains to products using an export/import file navigate to products.

1. In the window, go to *Retail chain units* and press *Export*.



2. In the pop-up window, select the Retail chains and Product Groups you wish to correct and press *Export*.

All Retail Chains and Product Groups are exported if nothing is selected.



3. When adding or correcting Retail Chains connected to a product, the following fields must be filled out, in the export file.

See description on the next page or download our guide for column description of the Retail Chains export file.

A – RetailChainId: NEVER make corrections to this field.

C – Chain: The chains available to you in effectmanager. Copy to add Retail chain to a new product.

E – Unit: Your unit description name. Copy from Product Export.

A	B	C	D	E	F
RetailChainId	UnitId	Chain	CustomerNum	Unit	EAN
cab636ea-52b0-40b7-854a-a95e00c72f3b	df0bf6cf-7d07-49d4-9e59-04b7318bfb4	Biika	32	Your Unit Description name	6410220003080
d7f01dfd-7e81-4b46-bc95-a95e00c7bb4e	df0bf6cf-7d07-49d4-9e59-04b7318bfb4	Fetex	41	Your Unit Description name	6410220003080
c441b420-90d2-4666-a09e-a95e00c7feba	df0bf6cf-7d07-49d4-9e59-04b7318bfb4	Salling	19	Your Unit Description name	6410220003080
286f5971-4105-447d-a432-a95e00c81747	df0bf6cf-7d07-49d4-9e59-04b7318bfb4	Netto		Your Unit Description name	6410220003080
1984ff40-2252-4239-92b1-a95e00ca25b5	df0bf6cf-7d07-49d4-9e59-04b7318bfb4	SuperBrugsen	30	Your Unit Description name	6410220003080
10b7057a-b4b4-4d1a-afcc-a95e00ca3e22	df0bf6cf-7d07-49d4-9e59-04b7318bfb4	Fetex Food	27	Your Unit Description name	6410220003080
487e063d-fb34-4d1a-afcc-a95e00ca3e22	df0bf6cf-7d07-49d4-9e59-04b7318bfb4	Biika	32	Your Unit Description name	6410220003080
0ff26149-3d8e-4d1a-afcc-a95e00ca3e22	df0bf6cf-7d07-49d4-9e59-04b7318bfb4	Fetex	41	Your Unit Description name	6410220003080
8a3cee15-78d3-44d1-ad19-a95e00ca9322	df0bf6cf-7d07-49d4-9e59-04b7318bfb4	Salling	19	Your Unit Description name	6410220003080
7832c64f-3ee7-4165-b977-a95e00caa56c	df0bf6cf-7d07-49d4-9e59-04b7318bfb4	Netto		Your Unit Description name	6410220003080
6449d75d-c8fe-45af-99f5-a95e00cab000	df0bf6cf-7d07-49d4-9e59-04b7318bfb4	LETKØB		Your Unit Description name	6410220003080
f29b9026-e0c7-4109-a640-a9d800bc15b4	df0bf6cf-7d07-49d4-9e59-04b7318bfb4	Menv	4	Your Unit Description name	6410220003080

B – UnitId: NEVER make corrections to this field.

D – CustomerNumber: Copy to add Retail chain to a new product.

F – EAN: EAN of the unit. Copy from Product Export.

G – InternalNumber: Your internal unit number. Copy from the Product Export.

I – AssortmentCode: An assortment code can be added here.

K – AssortmentEndDate: Can be filled out if used.

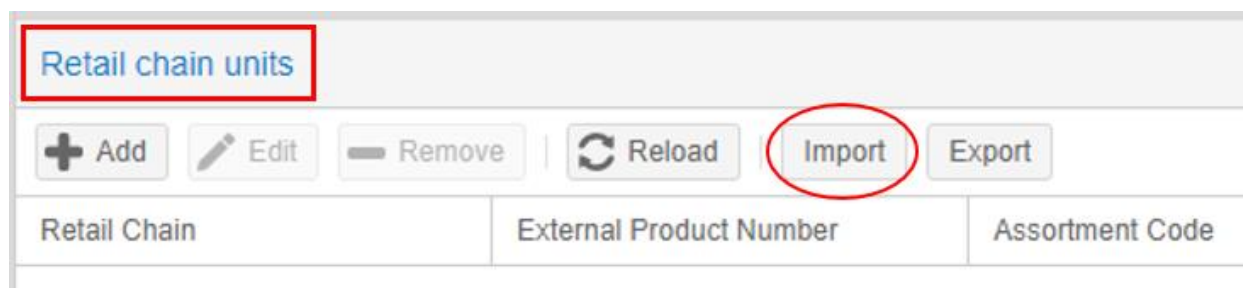
G	H	I	J	K	L
InternalNumber	ExternalNumber	AssortmentCode	AssortmentStartDate	AssortmentEndDate	Active
306671	81152701				SAND
30666	81152701				SAND
30666	81152701				SAND
30666	81152701	Big			SAND
30666					SAND
30666					SAND
30666					SAND
30666	81152701				SAND
3103	15752901	Small	01-01-2019		SAND
3103	15752901	Medium	01-01-2019		SAND

H – ExternalNumber: Unit number from the wholesaler.

J – AssortmentStartDate: Can be filled out if used.

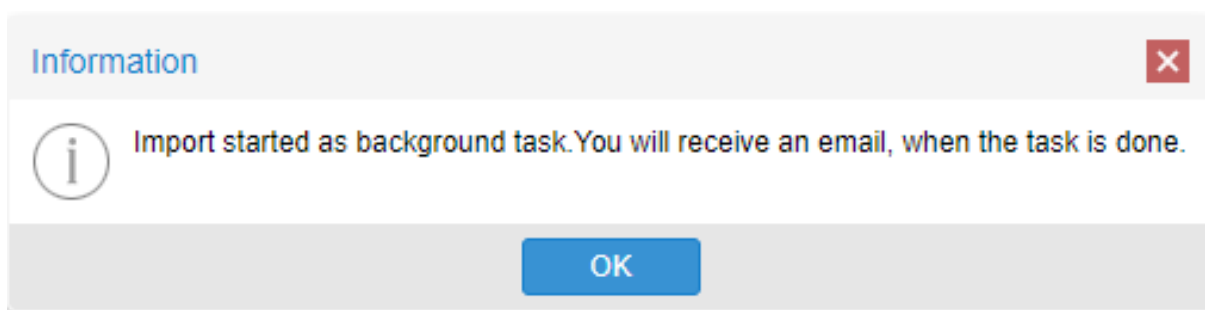
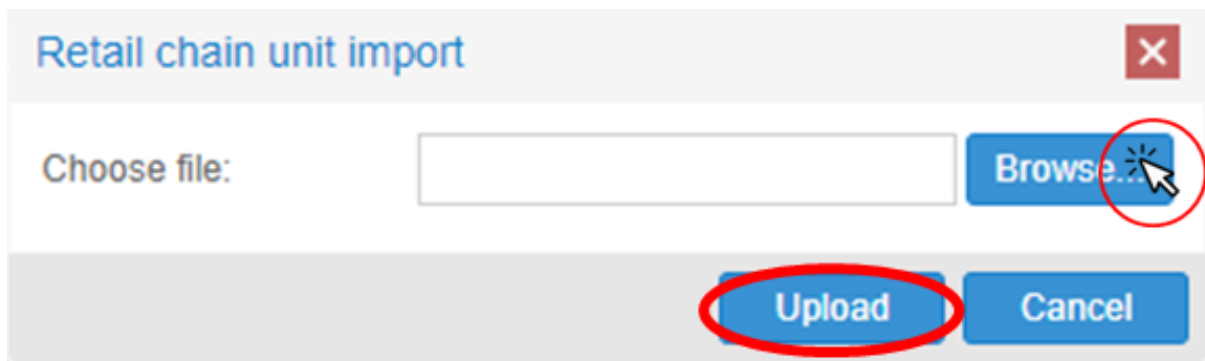
L – Active: Define status, by marking field. Active = SAND, Inactive = FALSK

4. When you have made the changes to your file, save it and import it to effectmanager. In the window go to *Retail chain units* and press *Import*.



5. In the pop-up window, find your file by pressing *Browse* and then press *Upload*.


A new pop-up informs you that the import has started.



6. When the import has completed, you will receive an email notification.

Your corrections have now been imported and are found by accessing Products - Retail Chain Units.

Retail chain unit import successful

 noreply@effectmanager.dk
Til Stephanie Risager

 Retail Chains.xlsx
3 KB

Retail chain unit import triggered for file: Retail Chains.xlsx succeeded

Import status: (3 out of 3 entries were imported).

Attached you can find the imported file.

Best regards,
Effectmanager Team