



# MIAMI STAINLESS

EXPECT QUALITY- EXPECT SERVICE - EXPECT VALUE

VERSION 1

PRO RIG

## TRADE SHADE SAIL FITTINGS 2017

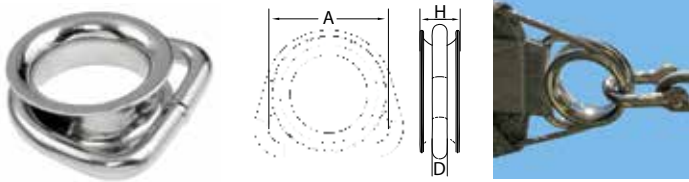
ECON

**PRICE REDUCTIONS ACROSS THE ENTIRE RANGE**

### DEE RING THIMBLES

Typical safety factor for Maximum Working Load (MWL) is 1/4 of Break Load (BL) All sizes in mm - All prices exclude GST

#### Dee Ring Thimble AISI 316/304

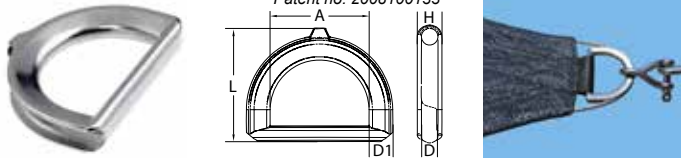


Code	Size	Suits Wire	D	A	H	BL	PRO RIG	ECON
S3257-0630	6 x 30	Up to 5mm	6	30	5.1	1800	2.40	-
S3257-0650	6 x 50	Up to 5mm	6	50	6.6	1800	4.15	3.50
S3257-0850	8 x 50	Up to 6mm	8	50	7.8	2800	4.95	5.30
S3257-1065	10 x 65	Up to 10mm	10	65	21	5000	9.30	-

Please specify ProRig or Econ range when ordering. ProRig AISI 304, Econ AISI 316

#### Ezi Hold Dee Ring AISI 316

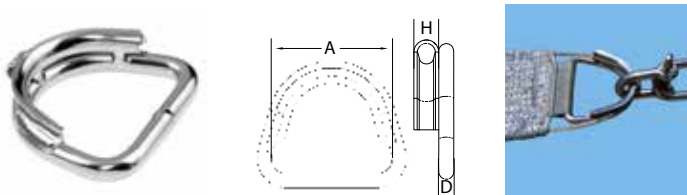
PRO RIG ORIGINAL DESIGN Patent no. 2008100133



Code	Size	Suits Wire	D	D1	A	H	BL	Price
S3259-550PR	5 x 50	Up to 5mm	6	9	50	55	8 3240*	3.25
S3259-850PR	8 x 50	Up to 8mm	8	13	50	62	13 7600*	5.06

\*When used with maximum wire size.

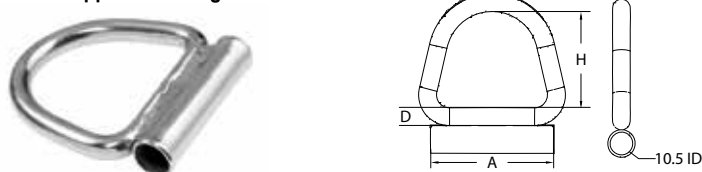
#### Dee Ring Thimble with Eye AISI 316



Code	Size	Suits Wire	D	A	H	BL	Price
S3258-650	6 x 50	5mm	6	50	15	1800	4.20
S3258-850	8 x 50	6mm	8	50	18	2800	4.95

The retaining eye on this fitting keeps the wire in its correct position and the large radius of the thimble reduces the chance of wire fatigue.

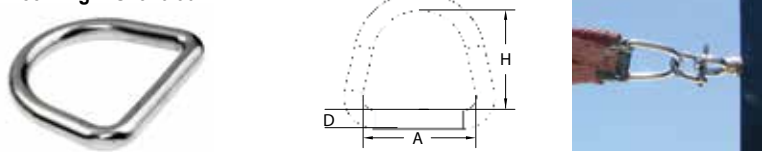
#### Wire Support Dee Ring AISI 316



Code	Size	D	A	H	BL	ID	Price
S325WS-850	8 x 50	8	57	43	2800	10.5	3.50

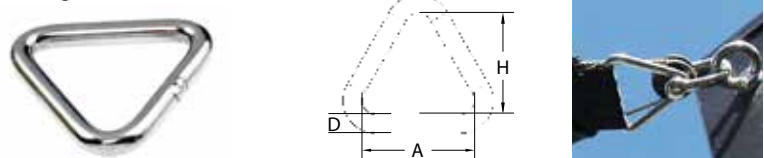
Suits wire up to 8mm.

#### Dee Ring AISI 316/304



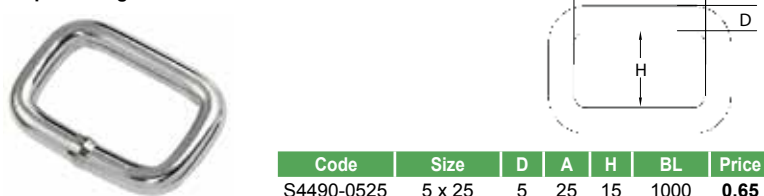
Code	Size	Grade	D	A	H	BL	Price
S325-0320304	3 x 20	304	3	20	17	600	0.38
S325-0425	4 x 25	316	4	25	22	800	0.50
S325-0425304	4 x 25	304	4	25	22	800	0.45
S325-0525	5 x 25	316	5	25	22	1000	0.58
S325-0640	6 x 40	316	6	40	34	1800	0.85
S325-0650	6 x 50	316	6	50	43	1800	1.00
S325-0850	8 x 50	316	8	50	43	2800	1.80
S325-0850304	8 x 50	304	8	50	43	2800	1.42
S325-1065304	10 x 65	304	10	65	55	5000	2.30

#### Triangle AISI 316/304



Code	Size	Grade	D	A	H	BL	Price
S325T-0650	6 x 50	316	6	50	46	2000	1.20
S325T-0850	8 x 50	316	8	50	45	2800	1.65
S325T-1065304	10 x 65	304	10	65	57	5000	2.90

#### Square Ring AISI 316



Code	Size	D	A	H	BL	Price
S4490-0525	5 x 25	5	25	15	1000	0.65

#### Dee Ring with Crossbar



Code	Size	Grade	B	D1	D2	L	BL	Price
S3251-05050	5 x 50	304	52	5	4	43	1000	1.50
S3251-06050	6 x 50	304	50	6	5	43	1800	2.00
S3251-08050	8 x 50	304	50	8	6	43	2800	2.90



# MIAMI STAINLESS

EXPECT QUALITY- EXPECT SERVICE - EXPECT VALUE

## TOGGLE BOLT HEAD

All sizes in mm - All prices exclude GST

Toggle Bolt Head AISI 316

**NEW**

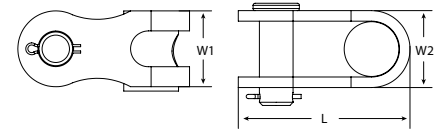


Threaded Rod Page 9



Threadlocking Compound Page 4

Use toggle bolt heads in conjunction with stainless threaded rod and a threadlocking compound to make your own toggle bolt at any length up to 1 metre. The wide jaw is designed to fit over thicker corner discs and anchor points.



Welding service available on request.

Code	Thread	Pin	L	W1	W2	Price
S3125H-12	M12	12	59	26	28.5	9.90
S3125H-16	M16	16	81.5	26	36	16.80

## EZI-HOLD DEE RING WITH PIPE

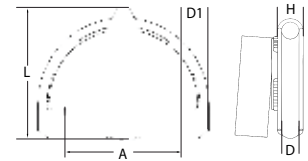
All sizes in mm - All prices exclude GST

Ezi-Hold Dee Ring with Pipe AISI 316



Scan this QR Code with your smart phone to see our review on this product that includes an alignment guide for correct installation.

**PRO-FIX**  
ORIGINAL DESIGN



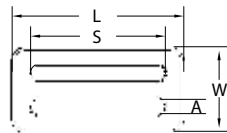
Code	Size	Suits Wire	D	D1	A	L	H	Tube I.D	Price
S3259P-550PR	5 x 50	Up to 5mm	6	9	50	55	8	12mm	15.25
S3259P-850PR	8 x 50	Up to 8mm	8	13	50	62	13	16mm	17.50

Toggle bolts sold separately.

## BUCKLES

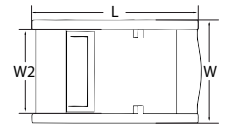
Typical safety factor for Maximum Working Load (MWL) is 1/4 of Break Load (BL) All sizes in mm - All prices exclude GST

Slide Buckle AISI 316



Code	Size	W	L	S	A	Price
S3181-25	25	17	32	25	3.6	0.50
S3181-50	50	32	64	50	6	1.40

Cam Buckle AISI 316

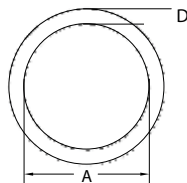


Code	Size	L	W	W2	Price
S3108-01	25	53	32.5	26	3.10

## OTHER SAIL CORNER FITTINGS

All sizes in mm - All prices exclude GST

Round Ring AISI 316/304

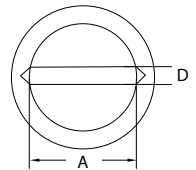


Code	Size	Grade	D	A	BL	Price
S1717-03020	3 x 20	316	3	20	650	0.46
S1717-04025	4 x 25	316	4	25	1000	0.52
S1717-05035	5 x 35	316	5	35	2000	0.73
S1717-05040	5 x 40	316	5	40	2000	0.78
S1717-06035	6 x 35	316	6	35	2700	0.95
S1717-06040	6 x 40	316	6	40	2700	0.90
S1717-06050	6 x 50	316	6	50	2700	1.02
S1717-08030	8 x 30	316	8	30	5000	1.68
S1717-08055	8 x 55	316	8	55	5000	2.10
S1717-08075304	8 x 75	304	8	75	5000	1.85
S1717-10075	10 x 75	316	10	75	8500	3.82
S1717-10075304	10 x 75	304	10	75	8500	4.10
S1717-12080	12 x 80	316	12	80	10000	7.90
S1717-12100	12 x 100	316	12	100	10000	7.85
S1717-12120	12 x 120	316	12	120	10000	10.35
S1717-13100	13 x 100	316	13	100	11500	7.60

Round Ring with Centre Crossbar AISI 316

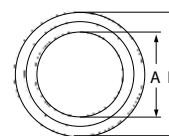


**NEW**



Code	Size	D	A	BL	Price
S3171-08050	8 x 50	8	50	5000	2.30
S3171-12080	12 x 80	12	90	10000	7.50

Round Thimble AISI 316/304



Code	Size	W	H	A	L	Grade	Price
S234R-1150	11 x 50	11	5.5	34	50	316	2.70
S234R-1550304	15.5 x 50	15.5	10	35	50	304	3.15
S234R-1850304	18 x 50	18	15	35	50	304	2.60

Note: Most sizes are made from 316 grade stainless steel.



# MIAMI STAINLESS

EXPECT QUALITY- EXPECT SERVICE - EXPECT VALUE

## CORNER DISCS & ACCESSORIES

All sizes in mm - All prices exclude GST

### Variable Termination Discs AISI 316

(For vinyl shade corners)



150mm diameter variable termination discs are a sandwich plate design that adjusts to almost any required angle of the fabric corner.

The 12mm ID tube allows for tension adjustment of each individual side with 12mm threaded terminals such as the swageless threaded terminal. To clamp the two discs use a M10 hex head screws and hex nuts or nylock hex nuts.

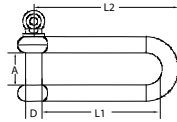


Code	Ømm	Tube I.D	Price
CD-VTD	150	12mm	<b>75.00</b>

Price includes 2 discs.

### Shade Corner Disc with Dee Shackle AISI 316

(For vinyl shade corners)



Price includes 2 discs, 6 pop rivets & dee shackle.

#### Shade Corner Disc

Code	Ømm	D1	D2	Suits Wire	Price
CD-150A	145	12.5	6.5	Up to 10mm	<b>43.45</b>

#### 12mm Long Dee Shackle AISI 316

Code	Size	D	A	L1	L2	BL
S362-12	12	12	24	90	108	5400

### Corner Disc with Welded Tube



Toggle bolts sold separately.

Code	Ømm	Material	Suits Wire	Tube I.D	Price
CD-090	90	Aluminium	Up to 6mm	12mm	<b>25.55</b>

1 Disc required per corner.



### Corner Disc with Tube

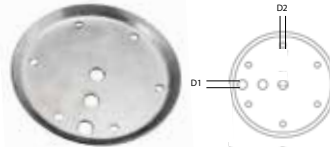


- High-Density polyethylene inside discs to stop cables from grabbing
- Adjustable angle on tube bolt to allow for tensioning from different angles
- Longer length tube to help protect threads when tensioning

Code	Ømm	Tube I.D	Price
CD-150PR	150	21.3mm	<b>53.70</b>

### Shade Corner Disc AISI 316

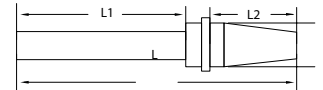
(For vinyl shade corners)



Price includes 2 discs.

Code	Ømm	D1	D2	Suits Wire	Price
CD-150EC	145	12.5	6.5	Up to 10mm	<b>33.20</b>

### Swageless Threaded Terminal AISI 316



Code	For Wire	Thread	L	L1	L2	D	Price
S7810R-0612	6mm	12mm	180	120	45	20	<b>24.50</b>

Ideal for use with variable termination discs.

- No hydraulic swage tool required
- No special tools required
- Quick & easy to install on-site
- Exceeds breaking strain of 6mm rope

### Toggle Bolt AISI 316

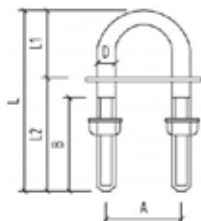


Code	Thread	Pin	A	H	L	BL	Price
S3125-10150	M10	10	16	22	150	2500	<b>11.60</b>
S3125-12150	M12	12	18	26	150	3700	<b>14.50</b>
S3125-12220	M12	12	12	17	221	5000	<b>15.50</b>
S3125-16150	M16	16	18	42	150	6950	<b>17.55</b>
S3125-16222	M16	16	16	22	222	8000	<b>36.70</b>

In some situations, toggle bolts can be used as an alternative to turnbuckles on shade sail corners.

## U BOLTS

All sizes in mm - All prices exclude GST



Code	Size	Grade	A	B	C	L	L1	L2	Price
S413-08080	80mm	304	28	40	7	80	30	42	<b>3.45</b>
S413-08100	100mm	304	28	50	7	100	33	60	<b>4.00</b>
S413-10130	130mm	304	39.8	55	9	130	45	75	<b>7.35</b>
S413-12150	150mm	304	47.8	65	11	150	55	90	<b>11.70</b>



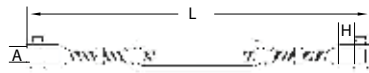
# MIAMI STAINLESS

EXPECT QUALITY- EXPECT SERVICE - EXPECT VALUE

## TURNBUCKLES

Typical safety factor for Maximum Working Load (MWL) is 1/4 of Break Load (BL) All sizes in mm - All prices exclude GST

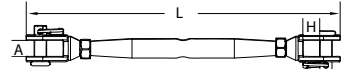
### Turnbuckle Jaw/Jaw AISI 316



Code	Thread	A	H	L-Min	L-Max	BL	PRO RIG	ECON
S311J-05	M5	6	9	120	160	750	5.60	3.34
S311J-06	M6	8	9	150	200	1400	6.10	6.08
S311J-08	M8	11	11	195	265	2200	10.90	5.82
S311J-10	M10	12	12	235	340	3450	17.20	12.33
S311J-12	M12	15	21	320	455	5000	30.50	20.40
S311J-16	M16	17	27	355	570	8000	52.60	-

Please specify ProRig or Econ range when ordering.

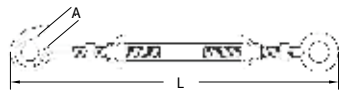
### Bottlescrew Jaw/Jaw AISI 316



Code	Thread	A	H	L-Min	L-Max	BL	PRO RIG	ECON
S312J-05	M5	7	12	130	190	750	5.50	2.90
S312J-06	M6	8	12	145	220	1400	7.60	5.26
S312J-08	M8	11	15	170	255	2200	11.88	8.80
S312J-10	M10	11.5	17	195	300	3450	19.05	-
S312J-12	M12	14	27	245	380	5000	29.80	-
S312J-16	M16	20	25	355	500	8000	56.15	-
S312J-20	M20	20	28	385	555	10500	90.70	-
S312J-24	M24	30	53	445	580	14500	146.60	-

Please specify ProRig or Econ range when ordering.

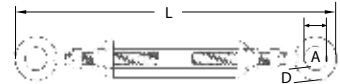
### Turnbuckle Hook/Eye AISI 316



Code	Thread	A	L-Min	L-Max	BL	PRO RIG	ECON
S311HE-05	M5	5	120	160	130	2.95	2.30
S311HE-06	M6	6	150	220	350	4.50	2.41
S311HE-08	M8	8	225	290	650	7.65	4.03
S311HE-10	M10	10	255	350	800	12.50	7.17
S311HE-12	M12	12	320	470	1400	20.00	-

Please specify ProRig or Econ range when ordering.

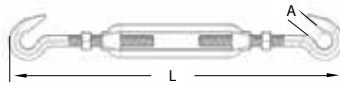
### Turnbuckle Eye/Eye AISI 316



Code	Thread	A	D	L-Min	L-Max	BL	PRO RIG	ECON
S311E-05	M5	10	5	120	170	680	3.08	2.01
S311E-06	M6	12	6	150	220	1500	4.48	3.20
S311E-08	M8	14	8	210	300	2300	7.90	4.08
S311E-10	M10	16.5	10	245	350	3100	12.60	6.59
S311E-12	M12	20	12	315	470	4400	22.00	12.80
S311E-16	M16	25	16	400	610	8100	40.90	31.70

Please specify ProRig or Econ range when ordering.

### Turnbuckle Hook/Hook AISI 316



Code	Thread	A	L-Min	L-Max	BL	PRO RIG	ECON
S311H-05	M5	7	120	160	130	1.88	1.65
S311H-06	M6	9	155	220	350	4.58	2.87
S311H-08	M8	10	225	290	650	7.90	4.18
S311H-10	M10	13	255	350	800	12.40	7.48
S311H-12	M12	15	320	470	1400	21.40	-

Please specify ProRig or Econ range when ordering.

Hooks have a lower working load than eyes or jaws.



## NEW MOLYTEC RANGE



### Loctite Anti-Seize Stick

Code	Description	Price
ANTI-20	Anti-Seize Stick	21.60

Always use an anti-seize product on turnbuckle threads to minimise binding.

### Nickel Anti-Seize Lubricant Tube



Code	Size	Price
ANTI-065NT	65g	11.90

### Nickel Anti-Seize Lubricant Tin



Code	Size	Price
ANTI-225NT	225g	24.50

### Ultraloc Threadlocking Compound



Code	Size	Price
THREADLOC-10	10ml	8.85

### Ultraloc Threadlocking Compound



Code	Size	Price
THREADLOC-50	50ml	26.45

### Nickel Anti-Seize Lubricant Aerosol



Code	Size	Price
ANTI-300NT	300g	24.50

**IMPORTANT:** This product is shipped by road only.



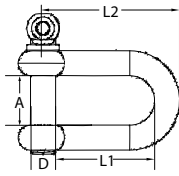
# MIAMI STAINLESS

EXPECT QUALITY- EXPECT SERVICE - EXPECT VALUE

## SHACKLES

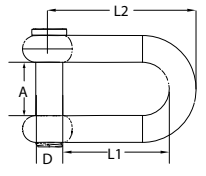
Typical safety factor for Maximum Working Load (MWL) is 1/4 of Break Load (BL) All sizes in mm - All prices exclude GST

### Dee Shackle AISI 316



Code	Size	D	A	L1	L2	BL	Price
S360-05	5	5	11	17	25	1000	1.10
S360-06	6	6	12	21	35	1700	1.65
S360-07	7	7	14	24	42	2000	2.02
S360-08	8	8	15.5	28	48	2500	2.22
S360-10	10	10	20	35	59	4100	3.08
S360-12	12	12	24	42	70	5400	4.80
S360-16	16	16	32	56	95	8800	11.60
S360-19	19	19	38	66	110	10000	19.80

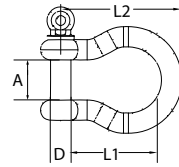
### Dee Shackle AISI 316 (Forged)



Code	Size	D	A	L1	L2	BL	Price
S360F-06	6	6	12	21	35	1850	1.15
S360F-08	8	8	16	28	48	3500	2.00
S360F-10	10	10	20	35	59	5440	3.35
S360F-12	12	12	25	42	73	8000	5.10

Forged shackles have a higher BL compared to standard cast shackles

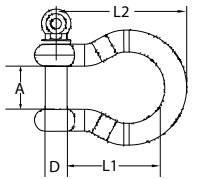
### Bow Shackle AISI 316 (Anchor, Forged)



Code	Size	D	A	L1	L2	BL	Price
S370F-06	6	6	12	31	40	2000	1.40
S370F-08	8	8	16	37	55	3500	2.20
S370F-10	10	10	21	46	70	5520	3.85
S370F-12	12	12	25	58	87	7360	6.85

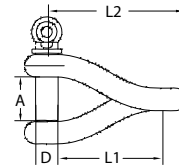
Forged shackles have a higher BL compared to standard cast shackles

### Bow Shackle AISI 316 (Anchor)



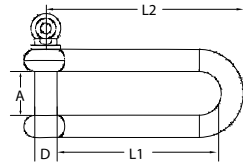
Code	Size	D	A	L1	L2	BL	Price
S370-05	5	5	10.5	21	33	1200	1.00
S370-06	6	6	13	31	41	1700	1.22
S370-08	8	8	14	32	56	2500	2.20
S370-10	10	10	20	45	70	4300	3.50
S370-12	12	12	24	54	83	6200	5.85
S370-16	16	16	32	74	112	9200	14.00
S370-22	22	22	43	98	150	18000	47.05

### Twisted Shackle AISI 316



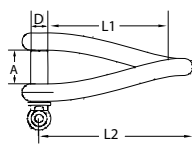
Code	Size	D	A	L1	L2	BL	Price
S380-06	6	6	12	33	47	1600	2.30
S380-08	8	8	15.5	39	59	2800	3.20
S380-10	10	10	20	46	69	4600	4.40

### Long Dee Shackle AISI 316



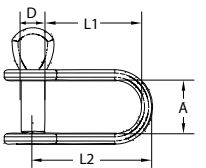
Code	Size	D	A	L1	L2	BL	Price
S362-06	6	6	12	45	54	1700	1.85
S362-08	8	8	17	60	72	2500	3.00
S362-10	10	10	22	75	90	3500	5.05
S362-12	12	12	26	90	108	5400	8.00

### Long Twisted Shackle AISI 316



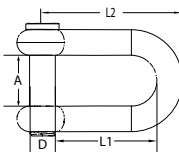
Code	Size	D	A	L1	L2	BL	Price
S381-06	6	6	13	45	56	1800	1.86
S381-08	8	6	16	61	80	2800	4.25
S381-10	10	10	19	76	98	4600	6.15

### Lightweight Strip Shackle AISI 304



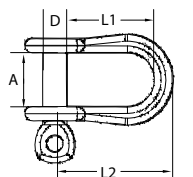
Code	Size	D	A	L1	L2	Price
S162-04	4	4	10	17	25	1.15

### Slot Head Dee Shackle AISI 316



Code	Size	D	A	L1	L2	BL	Price
S360C-04	4	4	8	14	24	552	1.00
S360C-06	6	6	12	21	35	1700	1.60
S360C-08	8	8	15	28	47	2500	2.70
S360C-10	10	10	20	35	60	4100	4.06

### Semi Round Dee Shackle AISI 304



Code	Size	D	A	L1	L2	BL	Price
S3611-05	5	5	12	19	30	950	0.95
S3611-06	6	6	12	22	36	1500	1.70

\* Please refer to website for Econ item dimensions and break loads as these may vary slightly



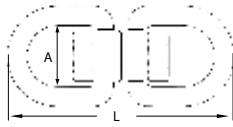
# MIAMI STAINLESS

EXPECT QUALITY- EXPECT SERVICE - EXPECT VALUE

## SWIVELS

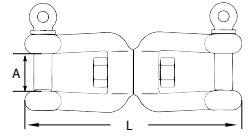
Typical safety factor for Maximum Working Load (MWL) is 1/4 of Break Load (BL) All sizes in mm - All prices exclude GST

### Eye/Eye Swivel AISI 316



Code	Ømm	L	A	BL	Price
S018-060	6	66	14.5	1200	2.10
S018-080	8	94	20.5	1900	6.70
S018-100	10	118	24	3500	11.65
S018-130	13	152	31	5000	25.05

### Jaw/Jaw Swivel AISI 316

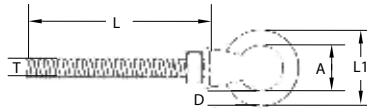


Code	Pin	L	A	BL	Price
S0182-06	6	66	14.5	1200	4.40
S0182-08	8	94	20.5	1900	9.90
S0182-10	10	118	24	3500	11.60

## EYE BOLTS

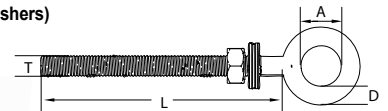
Typical safety factor for Maximum Working Load (MWL) is 1/4 of Break Load (BL) All sizes in mm - All prices exclude GST

### Eye Nut Bolts AISI 316 (With nut & 1 washer)



Code	Size	T	L	A	D	L1	BL	Price
S307-10100	10x100	M10	100	25	8	40	2600	5.15
S307-10120	10x120	M10	120	25	8	40	2600	5.42
S307-10160	10x160	M10	160	25	8	40	2600	6.62
S307-10200	10x200	M10	200	25	8	40	2600	7.22
S307-12100	12x100	M12	100	30	10	50	3500	7.12
S307-12150	12x150	M12	150	30	10	50	3500	8.10
S307-12165	12x165	M12	165	30	10	50	3500	7.86
S307-12200	12x200	M12	200	30	10	50	3500	10.95
S307-16060	16x60	M16	60	35	14	60	8000	11.20
S307-16100	16x100	M16	100	35	14	60	8000	14.92
S307-16125	16x125	M16	125	35	14	60	8000	17.05
S307-16150	16x150	M16	150	35	14	60	8000	20.70

### Eye Bolts AISI 316/304 (With nut & 2 washers)

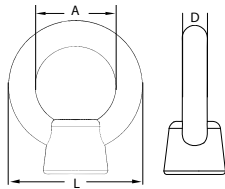


Code	Size	Grade	T	L	A	D	BL	Price
S3191-06040	6x40	316	M6	40	13	6	1000	0.90
S3191-06055	6x55	316	M6	55	13	6	1000	0.95
S3191-06060	6x60	316	M6	60	13	6	1000	0.98
S3191-06080	6x80	316	M6	80	13	6	1800	1.05
S3191-08035304	8x35	304	M8	35	17	8	1800	1.22
S3191-08060	8x60	316	M8	60	17	8	1800	2.20
S3191-08080	8x80	316	M8	80	17	8	1800	2.45
S3191-08100	8x100	316	M8	100	17	8	1800	2.90
S3191-08120	8x120	316	M8	120	17	8	1800	2.85
S3191-10060	10x60	316	M10	60	21	10	2400	3.30
S3191-10080	10x80	316	M10	80	21	10	2400	3.20
S3191-10120	10x120	316	M10	120	21	10	2400	4.05
S3191-10150	10x150	316	M10	150	21	10	2400	4.20
S3191-10160	10x160	316	M10	160	21	10	2400	3.75
S3191-12120	12x120	316	M12	120	25	12	3500	4.95
S3191-12185	12x185	316	M12	185	25	12	3500	7.35

## EYE NUTS

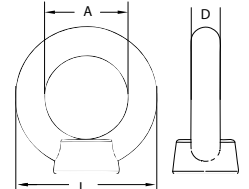
Typical safety factor for Maximum Working Load (MWL) is 1/4 of Break Load (BL) All sizes in mm - All prices exclude GST

### Eye Nuts AISI 316



Code	Thread	A	D	L	BL	Price
S3061-06	M6	16	5	26	1100	1.02
S3061-08	M8	20	6	32	1300	1.45
S3061-10	M10	25	8	40	2600	2.30
S3061-12	M12	30	10	49	3500	3.68
S3061-16	M16	35	12	59	8000	5.42
S3061-20	M20	39	16	70	10500	10.16

### Eye Nuts AISI 316 (582 Type)

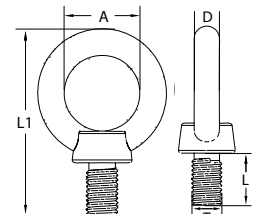


Code	Thread	A	D	L	BL	Price
S582-08	M8	20	8	35	1400	1.22
S582-10	M10	25	10	45	1800	3.40
S582-12	M12	30	12	55	2200	4.60
S582-20	M20	40	16	72	10000	11.60
S582-24	M24	50	20	90	18000	14.65

### Eye Bolts with Collar AISI 316



Code	T	L	A	D	L1	BL	Price	ECON
S580-06	M6	10	15	6	37	1300	1.50	-
S580-08	M8	15	20	8	50	2000	2.20	1.85
S580-10	M10	17	25	10	63	2600	3.90	2.85
S580-12	M12	20	30	12	73	4500	6.40	4.90
S580-16	M16	27	34	14	90	7000	11.25	6.90
S580-20	M20	32	40	16	103	10000	-	14.55
S580-24	M24	38	50	20	128	12000	-	11.60





# MIAMI STAINLESS

EXPECT QUALITY- EXPECT SERVICE - EXPECT VALUE

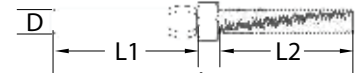
## SWAGE TERMINALS

All sizes in mm - All prices exclude GST

### Swage Studs AISI 316



Code	Thread	L	L1	L2	D	PRICE	CON
S7801L-050860	M8 LHT	128	57	51	9	4.15	-
S7801R-050860	M8 RHT	128	57	51	9	4.10	-
S7801R-0510115	M10 RHT	177	115	58	10	6.85	-
S7801R-0612143	M12 RHT	230	75	143	12.5	10.40	-
S7801R-061280	M12 RHT	162	79	63	12.5	7.55	-
S7801R-081280	M12 RHT	175	80	80	14	-	9.10
S7801R-0816100	M16 RHT	214	102	80	16	-	10.70
S7801R-1020105	M20 RHT	225	105	100	18	26.50	-
S7801R-1220116	M20 RHT	278	116	144	21.5	42.55	-
S7801R-1424138	M24 RHT	330	140	170	25	55.00	-
S7801R-1624170	M24 RHT	387	170	192	28	66.50	-

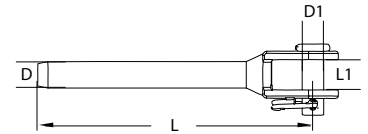


Miami Stainless can swage up to 16mm wire rope. Sizes from 2mm to 16mm available. LHT - Left Hand Thread, RHT - Right Hand Thread

### Fork Terminal AISI 316



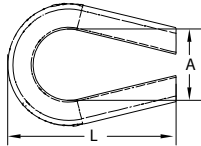
Code	For Wire	L	L1	D	D1	PRICE
S7803-0612	6mm	108	15	13	12	8.95
S7803-0814	8mm	148	15	16	14	17.60
S7803-1016	10mm	154	17	18	16	26.00
S7803-1220	12mm	176	20	22	20	37.95
S7803-1424	14mm	257	30	25	24	58.30
S7803-1624	16mm	281	30	28.5	24	69.60



## WIRE ROPE FITTINGS

All sizes in mm - All prices exclude GST

### Thimbles AISI 316



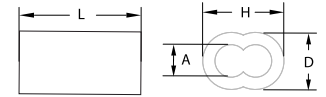
S = Small Eye

Code	For Wire	Grade	A	L	Price
S234-02S	2.5mm	316	8	23	0.29
S234-03S	3.2mm	316	10	24	0.18
S234-03	3.2mm	316	12	29	0.28
S234-04S	4.0mm	316	11	22	0.24
S234-04	4.0mm	316	13	34	0.38
S234-05	5.0mm	316	15	37	0.48
S234-06S	6.0mm	316	15	39	0.48
S234-06	6.0mm	316	17	40	0.68
S234-08	8.0mm	316	22	48	0.76
S234-10	10.0mm	316	25	59	0.81
S234-12	12.0mm	316	29	66	1.52
S234-14	14.0mm	316	34	74	1.82
S234-16	16.0mm	316	37.5	83	1.90

"S" type thimbles are a smaller size and well suited for wire balustrade.



### Croc Swage Sleeves - Ferrules (Nickel Plated Copper)



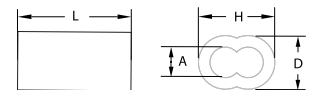
A safety factor should be applied to these readings depending on the situation of use.



Code	Suits Wire	Brand	D	L	A	H	Price
CS-112NP	1.2mm	Croc	3	9	1	5	0.25
CS-116NP	1.6mm	Croc	4	10	1.5	6	0.25
CS-120NP	2.0mm	Croc	5.5	11	2	8	0.32
CS-125NP	2.5mm	Croc	6	10	2.5	7	0.36
CS-130NP	3.2mm	Croc	7	13	3	10.5	0.31
CS-140NP	4mm	Croc	9.5	16	4	14.5	0.79
CS-150NP	5mm	Croc	11	22	5.5	17	1.58
CS-160NP	6mm	Croc	14	28	7	20	2.02
CS-180NP	8mm	Croc	17.5	29	9	27	3.65

- Heat treated for softer finish and stronger hold.
- Improved plating process to minimise flaking.
- Exceeds breaking strain of wire with no slippage.

### Clamp Swage Sleeves - Ferrules (Nickel Plated Copper)



A safety factor should be applied to these readings depending on the situation of use.

Code	Suits Wire	Brand	D	L	A	H	Price
CP-115NP	1.6mm	Clamp	4.5	9	2	7	0.37
CP-120NP	2.0mm	Clamp	5	9	2	7	0.42
CP-125NP	2.5mm	Clamp	7	11	3	10	0.59
CP-130NP	3.2mm	Clamp	7	13	3	10.5	0.64
CP-140NP	4mm	Clamp	9	16	4	14	1.34
CP-150NP	5mm	Clamp	11	18	5.5	17	1.90
CP-164NP	1/4"	Clamp	13	20	7	20	2.89
CP-160*	6mm	Clamp	17	26	9	26	2.43
CP-180*	8mm	Clamp	16	22	8	27	6.51
CP-199*	10mm	Clamp	18.5	34	10	32	10.36

\*Copper swage sleeves, NOT nickel plated

### Wire Rope Grips 'Q' Type AISI 316



Code	For Wire	Thread	Price
S260Q-03	3.2mm	M4	1.02
S260Q-04	4mm	M5	1.06

### Wire Rope Grips AISI 316



Code	For Wire	Thread	Price
S260-02	2mm	M2	0.85
S260-03	3.2mm	M3	0.68
S260-04	4mm	M4	0.90
S260-05	5mm	M5	1.10
S260-06	6mm	M6	1.65
S260-08	8mm	M8	3.15
S260-10	10mm	M10	5.10
S260-12	12mm	M12	6.50
S260-14	14mm	M12	8.10
S260-16	16mm	M13	14.40



# MIAMI STAINLESS

EXPECT QUALITY- EXPECT SERVICE - EXPECT VALUE

## WIRE ROPE

BS = Breaking Strain (kg) All sizes in mm - All prices exclude GST

### Wire Rope AISI 316

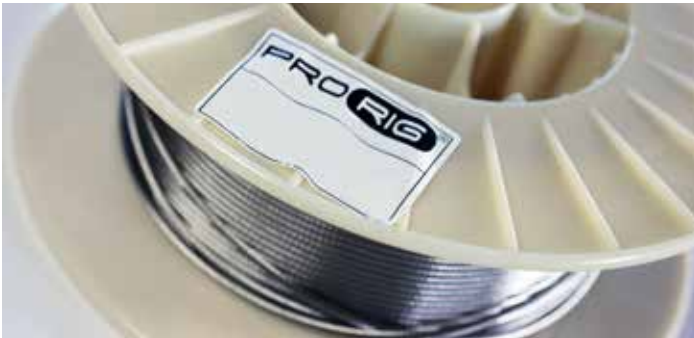
### 50M & 100M Rolls

Code	Size	Construction	BS	\$/50m Roll	\$/100m Roll
W03.277	3.2	7x7	685	<b>48.65</b>	<b>88.45</b>
W03.2119	3.2	1x19	857	<b>54.90</b>	<b>99.87</b>

### Wire Rope AISI 304

### NEW AISI 304 Grade!

Code	Size	Construction	BS	\$/Metre	\$/305m Roll
W03.2719-304	3.2	7x19	715	<b>0.95</b>	<b>251.30</b>
W03.277-304	3.2	7x7	750	<b>0.82</b>	<b>208.75</b>
W04719-304	4.0	7x19	1089	<b>1.51</b>	<b>388.55</b>
W0477-304	4.0	7x7	1139	<b>1.24</b>	<b>371.75</b>
W05719-304	5.0	7x19	1698	<b>1.73</b>	<b>456.90</b>
W0577-304	5.0	7x7	1788	<b>1.91</b>	<b>506.35</b>



ProRig stainless steel wire rope is produced by a single Korean manufacturer with stringent quality control procedures and more than 30 years experience in manufacturing wire rope products. Because ProRig wire rope comes from a single manufacturer you can be assured you are getting a consistently high quality product and none of the problems associated with budget wires. Miami Stainless has confidently supplied this wire rope in Australia now for over ten years.

- Reliable Breaking Strains
- Superior Rust Resistance
- Superior Surface Finish
- AISI 316 Stainless Steel

### Wire Rope AISI 316

Code	Size	Construction	BS	\$/Metre	\$/305m Roll	\$/1000m Roll
W01.277	1.2	7x7	87	<b>0.36</b>	<b>87.75</b>	-
W01.677	1.6	7x7	165	<b>0.43</b>	<b>109.35</b>	<b>375.50</b>
W01.6119	1.6	1x19	215	<b>0.34</b>	<b>95.10</b>	-
W0277	2.0	7x7	258	<b>0.45</b>	<b>132.40</b>	-
W02719	2.0	7x19	230	<b>0.79</b>	<b>216.20</b>	-
W02119	2.0	1x19	336	<b>0.40</b>	<b>121.95</b>	-
W02.577	2.5	7x7	400	<b>0.64</b>	<b>180.60</b>	-
W02.5719	2.5	7x19	367	<b>1.00</b>	<b>268.70</b>	-
W02.5119	2.5	1x19	525	<b>0.68</b>	<b>181.20</b>	-
W0377	3.0	7x7	585	<b>0.88</b>	<b>230.90</b>	<b>756.95</b>
W03.277	3.2	7x7	685	<b>0.95</b>	<b>245.15</b>	<b>803.80</b>
W03.2719	3.2	7x19	695	<b>1.05</b>	<b>291.45</b>	<b>955.50</b>
W03.2119	3.2	1x19	857	<b>0.99</b>	<b>276.90</b>	<b>924.10</b>
W0477	4.0	7x7	1030	<b>1.48</b>	<b>385.90</b>	<b>1287.75</b>
W04719	4.0	7x19	960	<b>1.70</b>	<b>444.30</b>	<b>1360.90</b>
W04119	4.0	1x19	1340	<b>1.70</b>	<b>452.65</b>	-
W0577	5.0	7x7	1620	<b>2.21</b>	<b>583.05</b>	<b>1636.35</b>
W05719	5.0	7x19	1490	<b>2.00</b>	<b>596.20</b>	<b>1792.10</b>
W05119	5.0	1x19	2019	<b>2.49</b>	<b>660.60</b>	-
W0677	6.0	7x7	2330	<b>3.27</b>	<b>814.15</b>	-
W06719	6.0	7x19	2150	<b>3.21</b>	<b>826.35</b>	-
W06119	6.0	1x19	2910	<b>3.62</b>	<b>955.05</b>	-
W0877	8.0	7x7	3950	<b>5.47</b>	<b>1390.00</b>	-
W08719	8.0	7x19	3820	<b>5.29</b>	<b>1379.25</b>	-
W08119	8.0	1x19	5044	<b>6.49</b>	<b>1687.85</b>	-
W1077	10.0	7x7	5517	<b>7.04</b>	<b>1894.10</b>	-
W10719	10.0	7x19	5106	<b>8.41</b>	<b>2228.55</b>	-
W10119	10.0	1x19	7070	<b>9.89</b>	<b>2731.50</b>	-
W1277	12.0	7x7	7948	<b>9.95</b>	<b>2978.10</b>	-
W12719	12.0	7x19	7350	<b>11.07</b>	<b>3142.20</b>	-
W12119	12.0	1x19	12090	<b>13.35</b>	<b>3538.90</b>	-
W14719	14.0	7x19	11690	<b>13.47</b>	<b>3900.28</b>	-
W14119	14.0	1x19	16190	<b>18.26</b>	<b>5020.40</b>	-
W16719	16.0	7x19	14460	<b>18.63</b>	<b>5116.60</b>	-
W16119	16.0	1x19	20385	<b>23.00</b>	<b>6112.40</b>	-



Econ Hardware is the new quality standard for stainless steel fixtures and fittings. At competitive prices, the new, larger range of Econ stainless steel hardware gives your budget more flexibility while you still enjoy the trusted quality and unrivalled service you expect from Miami Stainless.



### ECON Wire Rope AISI 316

Code	Size	Construction	BS	\$/Metre	\$/50m Roll	\$/100m Roll	\$/305m Roll
WE0377	3.0	7x7	548	<b>0.65</b>	<b>29.55</b>	<b>57.95</b>	<b>173.25</b>
WE03.2119	3.2	1x19	1052	<b>0.85</b>	<b>38.45</b>	<b>75.75</b>	<b>225.60</b>
WE03.2719	3.2	7x19	663	<b>0.93</b>	-	-	<b>246.50</b>
WE03.277	3.2	7x7	626	<b>0.69</b>	-	-	<b>183.80</b>
WE0477	4.0	7x7	918	<b>1.03</b>	-	-	<b>273.50</b>
WE04119	4.0	1x19	1449	<b>1.27</b>	-	-	<b>335.60</b>
WE04719	4.0	7x19	871	<b>1.18</b>	-	-	<b>313.30</b>
WE05719	5.0	7x19	1359	<b>1.74</b>	-	-	<b>461.20</b>
WE06719	6.0	7x19	1917	<b>2.50</b>	-	-	<b>664.20</b>

### ECON Wire Rope AISI 304

Code	Size	Construction	BS	\$/Metre	\$/305m Roll
WE03.2719-304	3.2	7x19	663	<b>0.83</b>	<b>219.20</b>
WE04719-304	4.0	7x19	871	<b>1.03</b>	<b>274.30</b>
WE0477-304	4.0	7x7	918	<b>0.90</b>	<b>237.85</b>
WE05719-304	5.0	7x19	1359	<b>1.52</b>	<b>402.70</b>
WE06719-304	6.0	7x19	1917	<b>2.19</b>	<b>579.80</b>

## NOTES ON WIRE

- Miami Stainless only stock and sell the highest quality Korean made wire rope
- Prices shown per metre are for lengths of wire cut from the roll
- Roll prices work out cheaper per metre
- 7x7 strand is semi-flexible wire that can be hand swaged
- 7x19 strand wire is very flexible that can be hand swaged
- 1x19 wire is the least flexible wire and will fatigue if bent around tight corners.
- Ends should be swaged with a hydraulic press







# MIAMI STAINLESS

EXPECT QUALITY- EXPECT SERVICE - EXPECT VALUE

## PVC COATED WIRE

MT = Minimum Thickness All sizes in mm - All prices exclude GST

Code	Size	Construction	BS	\$/Metre	\$/305m Roll
WP02.077-CL	2.0	7x7	260	0.63	160.20
WP02.577-CL	2.5	7x7	400	1.03	255.15
WP02.577-BK	2.5	7x7	400	0.99	237.25
WP02.577-WH	2.5	7x7	400	0.71	237.25
WP02.577-BU	2.5	7x7	400	0.71	237.25
WP02.577-RD	2.5	7x7	400	0.71	237.25
WP03.277-CL	3.2	7x7	665	1.55	385.65
WP03.277-WH	3.2	7x7	665	1.58	385.65
WP03.277-BU	3.2	7x7	665	1.33	344.15
WP03.277-RD	3.2	7x7	665	1.38	379.45
WP03.2719-BK	3.2	7x19	611	1.37	334.75

Code	Size	Construction	BS	\$/Metre	\$/305m Roll
WP0477-CL	4.0	7x7	1030	2.44	564.95
WP04719-BK	4.0	7x19	960	2.54	624.95
WP04719-WH	4.0	7x19	960	2.14	650.75
WP04719-BU	4.0	7x19	960	2.19	636.10
WP04719-RD	4.0	7x19	960	2.15	650.80
WP0577-CL	5.0	7x7	1620	2.66	719.95
WP05719-BK	5.0	7x19	1490	3.08	763.45
WP05719-WH	5.0	7x19	1490	2.84	763.45
WP05719-RD	5.0	7x19	1490	3.19	794.95
WP06719-BK	6.0	7x19	2150	4.62	1151.10

Wire sizes from .60mm and up to 32mm available. Other PVC colours available. Please enquire for price and availability.



## ANCHORS

MT = Minimum Thickness All sizes in mm - All prices exclude GST

### Sleeve Anchor Hex Head AISI 316



Suitable for use with eye nuts.

Code	Size	Drill Size	Thread	MT	Min Embed	Price
ABHH-06040S	6.5 x 40	6.5mm	5mm	10mm	30mm	0.43
ABHH-08040S	8 x 40	8mm	6mm	5mm	35mm	0.61
ABHH-08065S	8 x 65	8mm	6mm	30mm	35mm	0.88
ABHH-08085S	8 x 85	8mm	6mm	50mm	35mm	0.99
ABHH-10050S	10 x 50	10mm	8mm	10mm	40mm	1.04
ABHH-10075S	10 x 75	10mm	8mm	35mm	40mm	1.39
ABHH-12060S	12 x 60	12mm	10mm	10mm	50mm	1.92
ABHH-12075S	12 x 75	12mm	10mm	25mm	50mm	2.06
ABHH-12100S	12 x 100	12mm	10mm	50mm	50mm	2.67

### Flush Head Sleeve Anchor AISI 316



Use with wall plates for a neat finish.

Code	Size	Drill Size	Thread	MT	Min Embed	Price
ABFH-10040S	10 x 40	10mm	8mm	6mm	34mm	1.22
ABFH-10060S	10 x 60	10mm	8mm	20mm	40mm	1.46
ABFH-10080S	10 x 80	10mm	8mm	40mm	40mm	1.75
ABFH-10100S	10 x 100	10mm	8mm	60mm	40mm	2.52
ABFH-12075S	12 x 75	12mm	10mm	25mm	50mm	2.74

### Through Bolt AISI 316



Suitable for use with eye nuts.

Code	Size	Drill Size	Thread	MT	Min Embed	Price
ABTB-12080S	12 x 80	12mm	12mm	5mm	60mm	3.01
ABTB-12100S	12 x 100	12mm	12mm	25mm	60mm	3.01
ABTB-16105S	16 x 105	16mm	16mm	5mm	80mm	5.51
ABTB-20125S	20 x 125	20mm	20mm	5mm	100mm	11.07

### Screw Bolt (Galvanised)



For use in solid cores such as concrete or soft cores such as hollow brick.

Code	Size	Drill Size	Thread	MT	Price
SB-08060G	8 x 60	8mm	HEX	20mm	0.75
SB-10060G	10 x 60	10mm	HEX	20mm	1.21
SB-10100G	10 x 100	10mm	HEX	60mm	1.90
SB-12075G	12 x 75	12mm	HEX	25mm	1.34
SB-12100G	12 x 100	12mm	HEX	50mm	2.75

## THREADED ROD

### Threaded Rod Stud Assemblies AISI 304



Code	Size	Description	Price
SROD-16A	M16 x 247mm	Suits 16mm Rafter Bracket	8.50
SROD-20A	M20 x 295mm	Suits 20mm Rafter Bracket	15.25

### Threaded Rod AISI 304 (1 metre lengths)



Code	Size	Price/Metre
SR304-06	M6	1.40
SR304-08	M8	2.60
SR304-10	M10	4.10
SR304-12	M12	5.25
SR304-16	M16	10.50
SR304-20	M20	16.50

Threaded studs now come with 2 nuts and 2 washers.

## ADHESIVE ANCHORS

### Plastic Sleeve



For use in hollow base materials such as brick, block work, and hollow core concrete. Supports adhesive during curing process, preventing waste.

Code	Size	Drill Size	Rod Size	Price
PS-0850	12 x 50	12mm	8mm	0.30
PS-101285	15 x 85	15mm	10-12mm	0.30
PS-1685	20 x 85	20mm	16mm	0.30

### Threaded Rod AISI 316 (1 metre lengths)



Code	Size	Price/Metre
SR316-06	M6	2.25
SR316-08	M8	4.05
SR316-10	M10	6.00
SR316-12	M12	8.50
SR316-16	M16	14.35
SR316-20	M20	25.75
SR316-24	M24	40.95



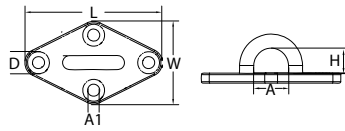
# MIAMI STAINLESS

EXPECT QUALITY- EXPECT SERVICE - EXPECT VALUE

## WALL FIXINGS

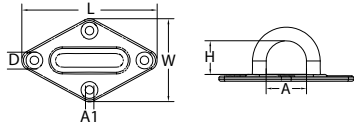
Typical safety factor for Maximum Working Load (MWL) is 1/4 of Break Load (BL) All sizes in mm - All prices exclude GST

### Diamond Pad Eyes AISI 304



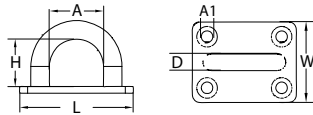
Code	Size	D	L	W	H	A	A1	BL	Price
S3213-060	60	8	68	38	18	21	8	2200	2.10
S3213-090	90	8	89	57	23	22	8.6	4000	5.10
S3213-100	100	10	100	60	28	24	9	6000	6.55

### Diamond Plates AISI 304



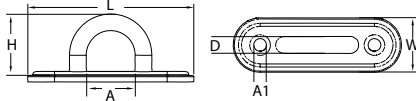
Code	Size	D	L	W	H	A	A1	BL	Price
S3211-08	8	8	80	49	28	23	5	1600	2.65

### Eye Plates AISI 304



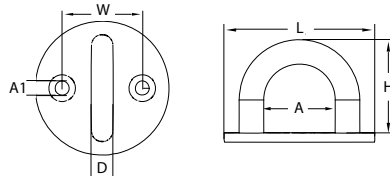
Code	Size	D	L	W	H	A	A1	BL	Price
S321-06	6	6	40	34	16	20	4.8	1000	1.60
S321-08	8	8	50	39	23	23	5.5	1600	2.40
S321-10	10	10	60	48	30	25	5.3	2000	2.70

### Oblong Plates AISI 304



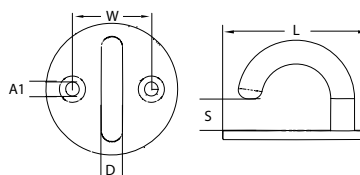
Code	Size	D	L	W	H	A	A1	BL	Price
S3212-05	5	5	54	16	14	14	5	700	1.12
S3212-08	8	8	81	25	21	23	6.5	1600	1.72
S3212-09	9	9	100	32	24	29	8	1700	3.35

### Round Eye Plates AISI 316



Code	Size	Grade	D	L	W	H	A	A1	BL	Price
S3214-05	5	316	33	33	21	15	17	4	700	1.20
S3214-08	8	316	50	50	33	25	25	5	1600	2.55

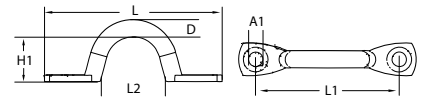
### Round Hook Plates AISI 316



Code	Size	D	L	W	S	A1	BL	Price
S3214H-06	6	6	40	40	12.5	4.5	220	1.32
S3214H-08	8	8	50	50	14.5	5.5	252	2.40

S = Minimum clearance between base plate and hook

### Saddles (Eye Straps) AISI 316 / 304

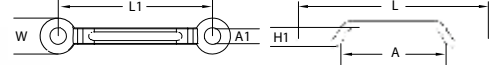


\*5mm Econ saddles - L1=40mm

Code	D	L	H1	L1	L2	A1	Grade	Price	ECON
S322-04	4	42	10	32	17	3.5	316	0.39	-
S322-05	5	52	13	38*	21	4	304	0.50	-
S322-05	5	52	13	38	21	4	316	-	0.34
S322-06	6	60	15	44	21	5	304	0.62	-
S322-06	6	60	15	44	21	5	316	-	0.56
S322-08	8	64	17	50	25	6	304	1.02	-
S322-08	8	64	17	50	25	6	316	-	0.86

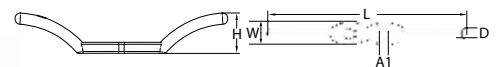
Please specify ProRig or Econ range when ordering. Other sizes also available.

### Breeching Staples AISI 316



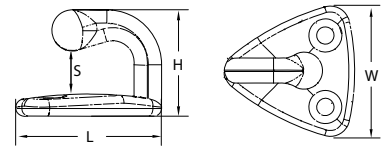
Code	L	H1	W	L1	A	A1	Price
S323-25	54	8	11	43	25	5	0.50
S323-50	72	8	13.5	58	35	6.5	1.50

### Rope Cleats AISI 316



Code	L	W	H	D	A1	Price
S4015-67	67	10.5	12	4	4	0.63
S4015-112	112	14	20	6.5	5.5	1.90
S4015-150	150	17	26	7.5	6.5	1.95
S508-06	150	43	20	10	7	7.10

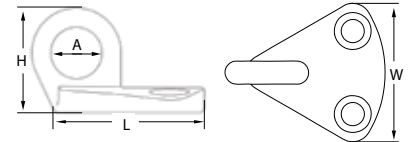
### Bulkhead Hook AISI 316



Code	Size	L	W	H	S	Price
S5373-06	6	21	27	19	6	0.68

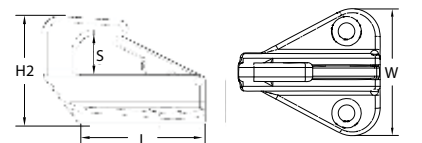
S = Minimum clearance between base plate and hook

### Bulkhead Eye AISI 316



Code	Size	L	W	H	A	Price
S5341-10	10	33	30	21	10	0.72

### Bulkhead Snap Hook AISI 316



Code	Size	L	W	H2	S	Price
S5359-05	5	37	34	25	5	2.90
S5359-10	10	40	34	33	10	2.82

S = Minimum clearance between base plate and hook



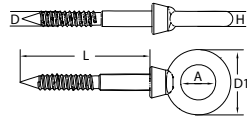
# MIAMI STAINLESS

EXPECT QUALITY- EXPECT SERVICE - EXPECT VALUE

## SCREW EYES

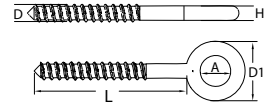
All sizes in mm - All prices exclude GST

### Eye Nut Screw Eyes AISI 316



Code	Size	D	L	A	H	D1	Pull Out*	Price
S3291-05060	5x60	5	60	11	5	20	550	1.45
S3291-06060	6x60	6	60	14	6	26	550	2.35
S3291-08080	8x80	8	80	18	8	33	820	3.85
S3291-10080	10x80	10	80	22	10	41	645	6.10
S3291-12100	12x100	12	100	27	12	50	1625	6.90
S3291-12140	12x140	12	140	27	12	50	1660	8.65
S3291-12160	12x 160	12	160	27	12	50	1830	10.55

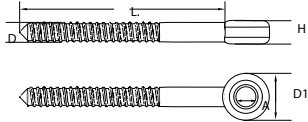
### Welded Eye Screw Eye AISI 316



Code	Size	D	L	A	H	D1	Pull Out*	Price
S7143-08080	8x80	8	80	16	8	32	1060	1.85
S7143-08130	8x130	8	130	16	8	32	1090	2.35
S7143-10060	10x60	10	60	20	10	40	1135	2.45
S7143-10080	10x80	10	80	20	10	40	1255	2.65
S7143-10100	10x100	10	100	20	10	40	1460	2.98
S7143-10130	10x130	10	130	20	10	40	1895	3.05
S7143-10150	10x150	10	150	20	10	40	2260	3.30

The 7143 screw eye features an extra-coarse thread.

### Screw Eyes AISI 316



Code	Size	D	L	A	H	D1	Pull Out*	PRO RIG	EGON
S3182-0555	5x55	5	55	5.2	6	12	780	1.30	-
S3182-0640	6x40	6	40	6.2	7**	14**	526	1.45	-
S3182-0640	6x40	6	40	6.2	7**	14**	547	-	1.00
S3182-0660	6x60	6	60	6.2	7**	14**	800	1.62	-
S3182-0660	6x60	6	60	6.2	7**	14**	709	-	1.18
S3182-0860	8x60	8	60	8.2	9	19	890	2.36	-
S3182-10080	10x80	10	80	10.3	12	20	965	5.35	-
S3182-10100	10x100	10	100	10.3	12	20	1200	4.75	-
S3182-10120	10x120	10	120	10.3	12	20	1637	5.85	-
S3182-12100	12x100	12	100	12.3	14	25	1590	6.35	-
S3182-12120	12x120	12	120	12.3	14	25	1814	7.95	-

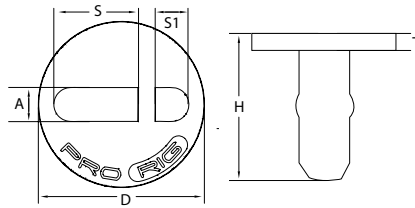
\*\*6mm Econ Screw Eyes: H = 5, D1 = 12

\*Pull out strengths are based on the maximum pull out loads achieved by using MGP 10 structural pine. They are intended as a guide only and a safety factor should be applied to these readings depending on the situation of use. Much greater results can be achieved using hardwoods: for example Kwila will hold around 80-90% more tension.

## CAFE BLIND ANCHOR

All sizes in mm - All prices exclude GST

### Café Blind Anchor AISI 316



Code	D	H	T	A	S	S1	Price
S3215-50	49	45	5	10	25	10	13.95

Comes complete with plastic levelling stick and protective film for easy installation and protection of the mirror polish finish.

**Ideal for Café Blinds in public areas!**



Scan this QR code with your smart phone to see our installation video.



- Extremely quick and easy to install in concrete etc.
- Simply core drill a 50mm hole, fill with grout and insert the plug.
- No need to cut and chisel any awkward shapes in the concrete surface.
- Attractive and stylish mirror polish finish.
- Sits flush with surface once installed to eliminate trip hazards when not in use.
- A quality 316 marine grade ProRig® product.
- Tested to 900kg's without deformation.

**PRO RIG**  
ORIGINAL DESIGN  
Registered Design No. 12142/2010

## INSTALLATION TOOLS

All sizes in mm - All prices exclude GST

### Diamond Core Drill



Diamond core power drills are perfect for installing ProRig Original Design café blind anchor housings with a 50mm diamond core drill bit.

Code	Description	Max Hole Ø	Price
PT-3505	1500W - 2100/950rpm	80mm	369.00

### Diamond Core Drill Bit



Diamond core drill bits are specifically designed to core drill 50mm holes to suit ProRig Original Design café blind anchor housings.

Code	Description	Core Drill Length	Price
DGD-50	50mm bit to suit PT-3505	450mm	90.41



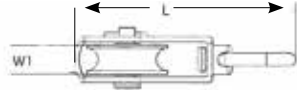
# MIAMI STAINLESS

EXPECT QUALITY- EXPECT SERVICE - EXPECT VALUE

## MAME BLOCKS

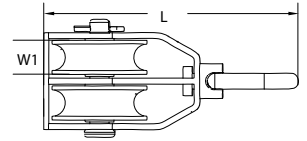
Typical safety factor for Maximum Working Load (MWL) is 1/4 of Break Load (BL) All sizes in mm - All prices exclude GST

### Mame Block (Single Nylon Sheave) AISI 304



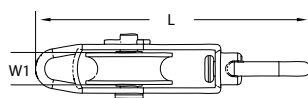
Code	Sheave	W1	L	BL	Rope	Price
S314NL-32	32	10	93	1700	Up to 10mm	<b>6.90</b>
S314NL-50	50	13.5	124	2800	Up to 13mm	<b>10.55</b>

### Mame Block (Double Nylon Sheave) AISI 304



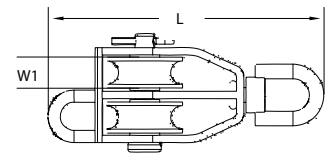
Code	Sheave	W1	L	BL	Rope	Price
S315NL-32	32	10	94.5	1500	Up to 10mm	<b>10.50</b>
S315NL-50	50	14	127	2500	Up to 13mm	<b>14.25</b>

### Mame Block with Becket (Single Nylon Sheave) AISI 304



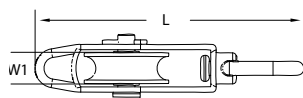
Code	Sheave	W1	L	BL	Rope	Price
S314ENL-32	32	10	115.5	1700	Up to 10mm	<b>7.50</b>
S314ENL-50	50	13.5	147	2800	Up to 13mm	<b>9.55</b>

### Mame Block with Becket (Double Nylon Sheave) AISI 304



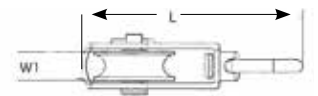
Code	Sheave	W1	L	BL	Rope	Price
S315ENL-32	32	10	113	1500	Up to 10mm	<b>11.05</b>
S315ENL-50	50	14	148	2500	Up to 13mm	<b>18.30</b>

### Mame Block with Becket (Single Cast Sheave) AISI 304



Code	Sheave	W1	L	BL	Rope	Price
S314ES-32	32	12.5	115.5	1700	Up to 12mm	<b>7.45</b>
S314ES-50	50	14.5	147	2800	Up to 13mm	<b>12.10</b>

### Mame Block (Single Cast Sheave) AISI 304



Code	Sheave	W1	L	BL	Rope	Price
S314S-25	25	11.5	79	1500	Up to 11mm	<b>7.85</b>
S314S-32	32	12.5	91.5	1800	Up to 12mm	<b>9.20</b>
S314S-50	50	14.5	124	3500	Up to 13mm	<b>13.90</b>

## PULLEY BLOCKS

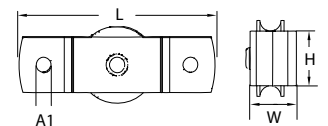
All sizes in mm - All prices exclude GST

### Fixed Pulley Blocks AISI 316



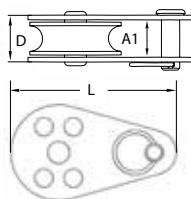
S8259-1-25

S8259-2-25



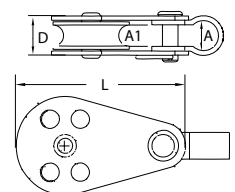
Code	Sheave	A1	H	W	L	Rope	Price
S8259-1-25	25mm Single	8	18	16	65	Up to 5mm	<b>3.55</b>
S8259-2-25	25mm Double	8	30	26	65	Up to 5mm	<b>5.15</b>

### Pulley Block (with Removable Pin) AISI 304



Code	Sheave	D	A1	L	Rope	Price
S8252-25	25	8	5	45	Up to 6.5mm	<b>2.45</b>

### Pulley Block (with Bracket & Fixed Pin) AISI 316



S8253-1-25

S8253-2-25

Code	Sheave	A	A1	D	L	Rope	Price
S8253-1-25	25mm Single	10	8	12	45	Up to 6.5mm	<b>2.95</b>
S8253-2-25	25mm Double	10	8	24	45	UP to 6.5mm	<b>3.85</b>



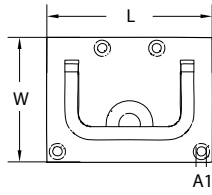
# MIAMI STAINLESS

EXPECT QUALITY- EXPECT SERVICE - EXPECT VALUE

## FLUSH RING PULLS

Ideal for use with PVC Blinds All sizes in mm - All prices exclude GST

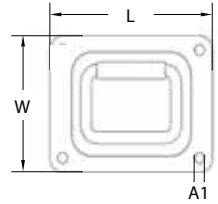
### Flush Ring Pull (Heavy Duty Cast) AISI 316



Code	W	L	A1	Price
S5400H-76	57	76	4	11.10

Countersink into surface to create a flush ring.

### Flush Ring Pull (Pressed) AISI 316

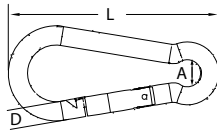


Code	W	L	A1	Price
S5400P-76	57	76	4	5.83

## HOOKS

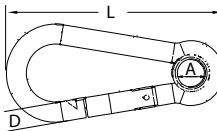
Typical safety factor for Maximum Working Load (MWL) is 1/4 of Break Load (BL) All sizes in mm - All prices exclude GST

### Spring Hooks AISI 316



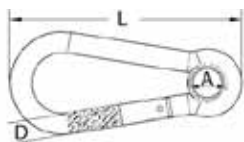
Code	Size	D	L	A	BL	Price
S2450-05	5	5	55	8	220	0.85
S2450-06	6	6	68	8.5	272	1.10
S2450-08	8	8	80	11	508	1.90
S2450-10	10	10	100	15	728	3.40
S2450-11	11	11	120	17	816	4.35

### Spring Hooks (with Eye) AISI 316



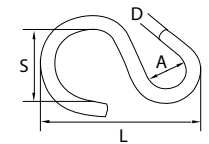
Code	Size	D	L	A	BL	Price
S2450WE-05	5	5	50	7	220	0.91
S2450WE-06	6	6	60	7	272	1.15
S2450WE-08	8	8	80	10	508	2.15
S2450WE-10	10	10	100	13	728	3.50

### Spring Hooks (with Eye & Screw Nut) AISI 316



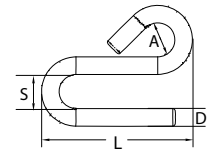
Code	Size	D	L	A	BL	Price
S2450WEN-06	6	6	60	7	456	1.62
S2450WEN-08	8	8	80	10	728	3.45
S2450WEN-10	10	10	100	13	1092	5.68

### S Hook AISI 304



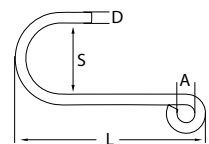
Code	Size	D	L	A	S	BL	Price
S874-03	3	3	37	9	16	25	0.40

### S Hook AISI 304



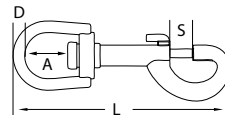
Code	Size	D	L	A	S	BL	Price
S875-06	6	6	60	10	12	200	0.75
S875-08	8	8	75	16	18	400	1.25
S875-09	9	9	80	17	18	650	1.70

### S Hook AISI 316



Code	D	A	S	L	Price
S876-640	6	10	40	105	1.40

### Swivel Eye Bolt Snap AISI 316



S225-080SQ

S225-090

S225-120

SQ = Square Swivel Eye

Code	D	L	A	S	BL	Price
S225-080SQ	5	80	14	6.5	180	4.52
S225-090	5	90	36	8.1	650	4.25
S225-120	6.5	120	25	13	550	5.70

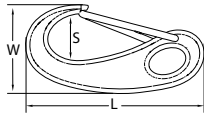
Suits café blind anchor housing.



# MIAMI STAINLESS

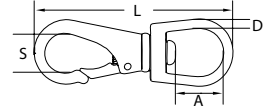
EXPECT QUALITY- EXPECT SERVICE - EXPECT VALUE

## Cast Snap Hooks AISI 316



Code	Size	L	W	S	BL	Price
S2470-050	50	50	23	10	220	1.86
S2470-070	70	69	30	12	500	3.20
S2470-100	100	96	46	20	900	6.75

## Swivel Eye Snap AISI 316

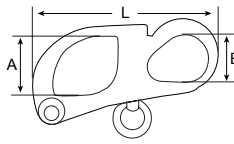


Code	D	L	A	S	BL	Price
S251-070	3.5	68	13	4	152	3.20
S251-085	4	87	20	7	172	3.80
S251-100	6	100	21	21	172	5.25

## Fixed Eye Snap Shackle AISI 316



Quick Release Pin

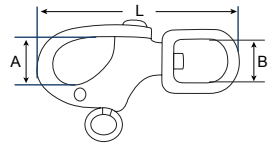


Code	L	A	B	BL	Price
S2483-01	56	16	12	1100	7.15
S2483-02	70	21	19	2000	7.60
S2483-03	102	21	25	3500	11.20

## Swivel Eye Snap AISI 316

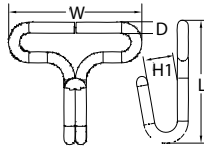


Spring Pin To Quick Release



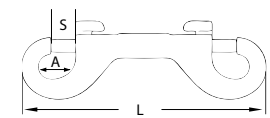
Code	L	A	B	BL	Price
S2482-01	67	14	12	1100	5.86
S2482-02	87	20	16	2000	7.60
S2482-03	126	27	22	3500	11.30

## 'J' Hook AISI 316



Code	L	D	W	H	H1	Price
S326-25	32	3	36	16	8.1	0.82

## Double Ended Bolt Snap AISI 316

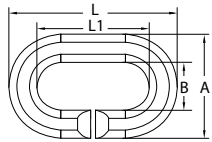


Code	L	A	S	BL	Price
S226-105	105	10	8.1	352	4.50

## LINKS

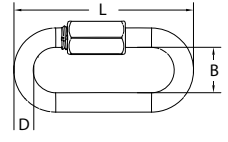
Typical safety factor for Maximum Working Load (MWL) is 1/4 of Break Load (BL) All sizes in mm - All prices exclude GST

### C-Links AISI 316



Code	Size	A	B	L	L1	BL	Price
S10C-10	10	35	15	60	40	548	3.55
S10C-11	11	39	16	66	45	948	4.45
S10C-13	13	48	19	78	52	1300	6.10
S10C-16	16	60	22	98	62	1700	10.70

### Quick Links AISI 316



Code	Size	B	D	L	Thread	BL	Price
S7350-04	4	12	4	33	M6	1400	0.68
S7350-06	6	14	6	46	M9	3250	1.55
S7350-08	8	18	8	75	M11	5500	2.65
S7350-10	10	20	10	72.5	M13	9000	4.20
S7350-12	12	24	12	104.5	M15	12500	8.45
S7350-16	16	31	16	140	M19	22500	30.05

## CHAIN

All sizes in mm - All prices exclude GST

### Chain - Medium Link AISI 304

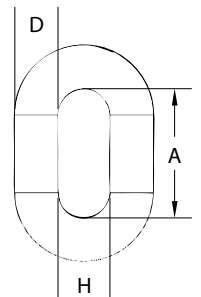
Proof tested to Australian standard.

Code	Size	D	A	H	Proof Test Load (kg)	Breaking Strain (kg)	Price/Metre
SCH304-03M	3	3	15.7	7.1	120	900	2.60
SCH304-04M	4	4	18.6	8	220	1100	3.90
SCH304-06M	6	6	26.1	11.5	640	2945	7.25
SCH304-08M	8	8	32.2	13.5	1060	5130	13.15
SCH304-10M	10	10	39.1	16.2	1660	6685	20.40
SCH304-12M	12	12	46	20	2700	7240	29.50

### Chain - Medium Link AISI 316

Proof tested to Australian standard.

Code	Size	D	A	H	Proof Test Load (kg)	Breaking Strain (kg)	Price/Metre
SCH316-02M	2	2	14.4	5	91	183	1.60
SCH316-03M	3	3	15.7	7.1	120	700	3.65
SCH316-04M	4	4	18.6	8	220	885	4.85
SCH316-06M	6	6	26.1	11.5	640	3355	9.95
SCH316-08M	8	8	32.2	13.5	1060	5000	16.10
SCH316-10M	10	10	39.1	16.2	1660	6555	20.70
SCH316-12M	12	12	46	20	2700	7065	37.25
SCH316-16M	16	16	59.6	24.5	4620	13,865	71.40





# MIAMI STAINLESS

EXPECT QUALITY- EXPECT SERVICE - EXPECT VALUE

## FASTENERS

All sizes in mm - All prices exclude GST

### Brass Standard Hex Nuts



Code	Thread	Price
BN-12	M12	0.71
BN-16	M16	1.43

### Nylon Lock Nuts AISI 316



Code	Thread	Price
SNL-05	M5	0.02
SNL-06	M6	0.05
SNL-08	M8	0.08
SNL-10	M10	0.16
SNL-12	M12	0.26
SNL-16	M16	0.49
SNL-20	M20	1.27

### Flat Round Washers AISI 316



Code	Thread	Price
SW-05	M5	0.01
SW-06	M6	0.03
SW-08	M8	0.04
SW-10	M10	0.04
SW-12	M12	0.07
SW-16	M16	0.10
SW-20	M20	0.19
SW-24	M24	0.32

### Standard Hex Nuts AISI 316



Code	Thread	Price
SN-03	M3	0.02
SN-04	M4	0.02
SN-05	M5	0.02
SN-06	M6	0.04
SN-08	M8	0.07
SN-10	M10	0.14
SN-12	M12	0.21
SN-16	M16	0.43
SN-20	M20	0.78
SN-24	M24	1.12

### Dome Nuts AISI 316



Code	Thread	Price
SDN-06	M6	0.10
SDN-08	M8	0.26
SDN-10	M10	0.36
SDN-12	M12	0.54
SDN-16	M16	1.44
SDN-20	M20	2.65

## Our 2017 Trade Balustrade Catalogue has been delivered!

Download a copy from our resource section at [miamistainless.com.au](http://miamistainless.com.au) or call **1800 022 122**.

### Screws AISI 316/304

Code	Size	Length	Head	Drive	Suits	PER 100	
						Price 304g	Price 316g
SSTP(4/6)-0625	6	25mm	CSK	Phillips	Wood	4.00	5.00
SSTP(4/6)-0632	6	32mm	CSK	Phillips	Wood	4.00	7.00
SSTP(4/6)-0638	6	38mm	CSK	Phillips	Wood	5.00	9.00
SSTP(4/6)-0825	8	25mm	CSK	Phillips	Wood	4.00	8.00
SSTP(4/6)-0832	8	32mm	CSK	Phillips	Wood	5.00	9.00
SSTP(4/6)-0838	8	38mm	CSK	Phillips	Wood	4.00	-
SSTP(4/6)-0844	8	44mm	CSK	Phillips	Wood	4.00	14.00
SSTP(4/6)-0850	8	50mm	CSK	Phillips	Wood	4.00	14.00
SSTP(4/6)-1032	10	32mm	CSK	Phillips	Wood	8.00	15.00
SSTP(4/6)-1038	10	38mm	CSK	Phillips	Wood	9.00	20.00
SSTP(4/6)-1044	10	44mm	CSK	Phillips	Wood	10.00	-
SSTP(4/6)-1050	10	50mm	CSK	Phillips	Wood	10.00	-
SSTP(4/6)-1250	12	50mm	CSK	Phillips	Wood	18.00	-
SSTP(4/6)-1438	14	38mm	CSK	Phillips	Wood	18.00	-
SSTP(4/6)-1450	14	50mm	CSK	Phillips	Wood	18.00	-
SSTS4-0832SQ	8	32mm	CSK	Square	Wood	4.00	-
SSTS4-0838SQ	8	38mm	CSK	Square	Wood	4.00	-
SSTS4-0844SQ	8	44mm	CSK	Square	Wood	4.00	-
SSTS4-0850SQ	8	50mm	CSK	Square	Wood	4.00	-
SSTS4-1032SQ	10	32mm	CSK	Square	Wood	4.00	-
SSTS4-1044SQ	10	44mm	CSK	Square	Wood	4.00	-
SSTS4-1050SQ	10	50mm	CSK	Square	Wood	6.00	-
SSTS4-1250SQ	12	50mm	CSK	Square	Wood	9.00	-
ST17S-1050	10	50mm	CSK	Square	T17 Wood	11.00	-
SSDP4-0813	8	13mm	PAN	Phillips	Steel	32.00	-
SSDS4-0820SQ	8	20mm	CSK	Square	Steel	18.00	-
SSDP4-1022	10	22mm	WH	Phillips	Steel	51.00	-



**SSTP**  
Self Tapping Screw  
Countersunk Phillips



**SSTS**  
Self Tapping Screw  
Countersunk Square



**ST17**  
Type 17 Screw  
Countersunk Square



**SSD**  
Self Drilling Screw  
Countersunk Square

## COACH SCREWS

All sizes in mm - All prices exclude GST

### Coach Screw Stainless Steel (To suit Mungo Plugs)



Code	Size	Head	Price
CSHH-06050S	6 x 50	HEX	0.22
CSHH-08065S	8 x 65	HEX	0.50
CSHH-10075S	10 x 75	HEX	1.28
CSHH-12075S	12 x 75	HEX	1.05

### Coach Screw Galvanised (To suit Mungo Plugs)



Code	Size	Head	Price
CSHH-06050G	6 x 50	HEX	0.08
CSHH-08065G	8 x 65	HEX	0.10
CSHH-10075G	10 x 75	HEX	0.24
CSHH-12075G	12 x 75	HEX	0.28

## NYLON ANCHORS

All sizes in mm - All prices exclude GST



For use in solid cores such as concrete, natural stone and brick.

Code	Size	Drill Size	Coach Screw	Metric Thread	Price
MP-08	8 x 40	8mm	4.5-6mm	5mm	0.20
MP-10	10 x 50	10mm	6-8mm	6mm	0.32
MP-12	12 x 50	12mm	8-10mm	8mm	0.59
MP-14	14 x 70	14mm	10-12mm	10mm	1.26
MP-16	16 x 80	16mm	12-14mm	12mm	2.69

### Mungo Multi Plugs



For use in soft and hollow cores such as plaster, aerated concrete and hollow brick.

Code	Size	Drill Size	Coach Screw	Metric Thread	Price
MMP-08	8 x 50	8mm	4.5-6mm	6mm	0.38
MMP-10	10 x 60	10mm	6-8mm	8mm	0.56
MMP-12	12 x 70	12mm	8-10mm	10mm	1.02
MMP-14	14 x 80	14mm	10-12mm	12mm	0.80



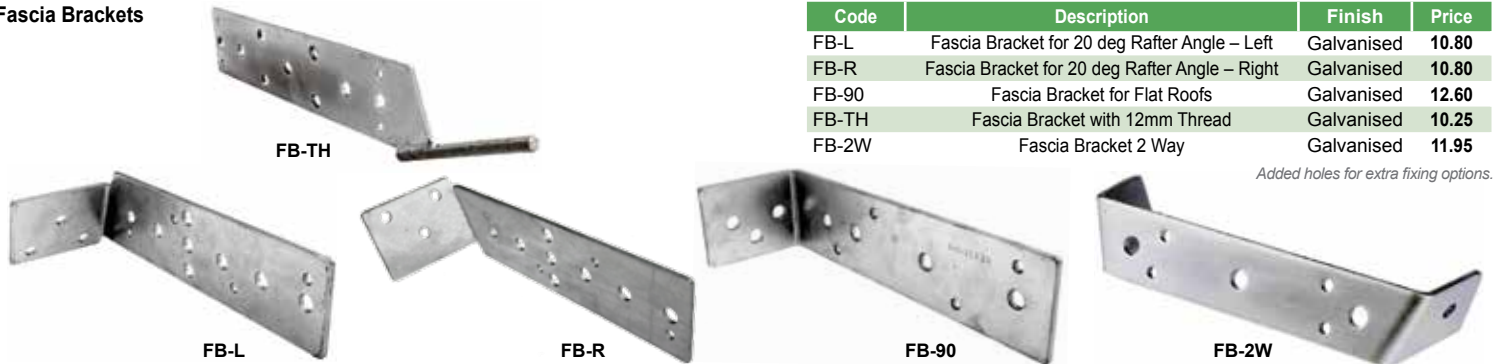
# MIAMI STAINLESS

EXPECT QUALITY- EXPECT SERVICE - EXPECT VALUE

## FASCIA BRACKETS

All sizes in mm - All prices exclude GST

### Fascia Brackets



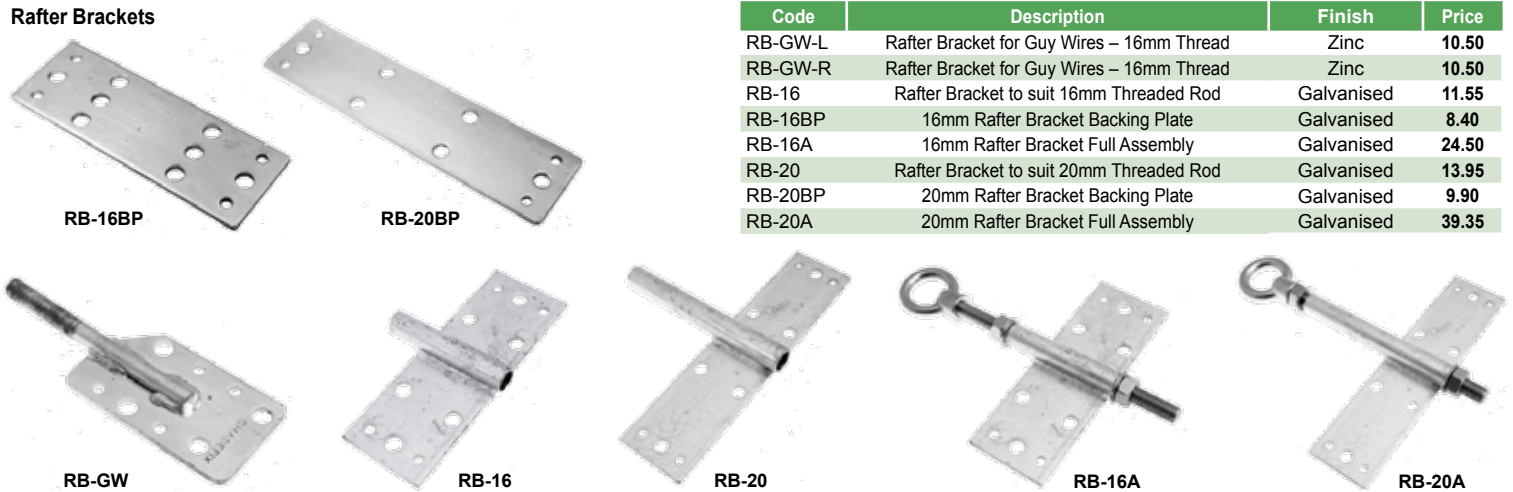
Code	Description	Finish	Price
FB-L	Fascia Bracket for 20 deg Rafter Angle – Left	Galvanised	10.80
FB-R	Fascia Bracket for 20 deg Rafter Angle – Right	Galvanised	10.80
FB-90	Fascia Bracket for Flat Roofs	Galvanised	12.60
FB-TH	Fascia Bracket with 12mm Thread	Galvanised	10.25
FB-2W	Fascia Bracket 2 Way	Galvanised	11.95

Added holes for extra fixing options.

## RAFTER BRACKETS

All sizes in mm - All prices exclude GST

### Rafter Brackets



Code	Description	Finish	Price
RB-GW-L	Rafter Bracket for Guy Wires – 16mm Thread	Zinc	10.50
RB-GW-R	Rafter Bracket for Guy Wires – 16mm Thread	Zinc	10.50
RB-16	Rafter Bracket to suit 16mm Threaded Rod	Galvanised	11.55
RB-16BP	16mm Rafter Bracket Backing Plate	Galvanised	8.40
RB-16A	16mm Rafter Bracket Full Assembly	Galvanised	24.50
RB-20	Rafter Bracket to suit 20mm Threaded Rod	Galvanised	13.95
RB-20BP	20mm Rafter Bracket Backing Plate	Galvanised	9.90
RB-20A	20mm Rafter Bracket Full Assembly	Galvanised	39.35

## RAFTER BRACKET ACCESSORIES

All sizes in mm - All prices exclude GST

### DEKS Dektite Flashing (For Tin Roofs)



- Low profile base with watershed sleeve
- Larger square base will cover a larger opening
- Unique cone design
- Clear markings in metric & imperial measurements



A Skellerup Industries Company

Suitable for use with rafter brackets.

- \* Always use the neutral cure low modulus silicone for sealing
- \* In corrosive and coastal environments fix using blind aluminium rivets

Code	Tube Size	Base	Pitch	Suits	Price Black	Price Grey
DFE-035	0-35mm	99 x 99	0-60	16 & 20 RB-ASSY	10.60	12.30
DFE-055	5-55mm	137 x 137	0-45	16 & 20 RB-ASSY	11.15	13.30

### DEKS Square Dektite Flashing (For Tin Roofs)



- Suitable for both standard and retrofit applications
- Larger square base will cover a large opening
- Unique cone design
- Clear markings in metric and imperial measurements

- \* Always use the neutral cure low modulus silicone for sealing
- \* Use 10x16 Hex head self-drilling screws
- \* In corrosive and coastal environments fix using blind aluminium rivets
- \* Clips included

Code	Tube Size	Base	Pitch	Colour	Suits	Price
DFS-20125	20-125mm	216 x 216	0-40	Black	20-125mm Square Posts	30.20

### DEKS Dektite Flashing (For Tile Roofs) 3 PER PACK



- Environmentally friendly
- Won't stain or corrode spouting and gutters
- Easy installation
- Paint to match any roof

- \* Always use the neutral cure low modulus silicone for sealing

Code	Tube Size	Base	Pitch	Colour	Suits	Price
TFA-1270B	12-70mm	600 x 450	0-40	Black	16 & 20 RB-ASSY	27.75
TFA-1270B/3	12-70mm	600 x 450	0-40	Black	16 & 20 RB-ASSY	83.30
TFA-50170B	50-170mm	600 x 500	0-40	Black	16 & 20 RB-ASSY	36.55
TFA-50170B/3	50-170mm	600 x 500	0-40	Black	16 & 20 RB-ASSY	109.70





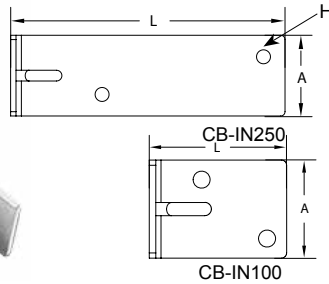
# MIAMI STAINLESS

EXPECT QUALITY- EXPECT SERVICE - EXPECT VALUE

## CORNER BRACKETS

All sizes in mm - All prices exclude GST

### Internal Corner Brackets



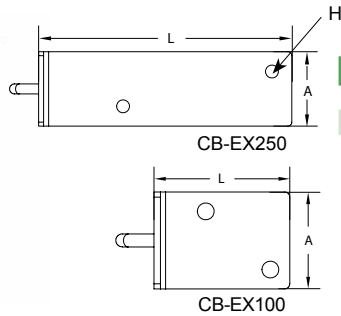
#### Galvanised

Code	Size	L	A	H	Corner	Material	Plating	Price
CB-IN100	100	100	75	12.5	Internal	Steel	Galv	11.00
CB-IN250	250	250	75	12.5	Internal	Steel	Galv	15.50

#### AISI 316

Code	Size	L	A	H	Corner	Material	Price
CB-IN100S	100	100	75	12.5	Internal	Stainless Steel AISI 316	19.95
CB-IN250S	250	250	75	12.5	Internal	Stainless Steel AISI 316	42.50

### External Corner Brackets



#### Galvanised

Code	Size	L	A	H	Corner	Material	Plating	Price
CB-EX100	100	100	75	12.5	External	Steel	Galv	11.00
CB-EX100120	100x120	100	120	12.5	External	Steel	Galv	12.45
CB-EX250	250	250	75	12.5	External	Steel	Galv	15.50

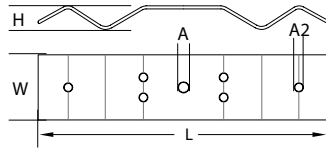
#### AISI 316

Code	L	A	H	Corner	Material	Price	
CB-EX100S	100	100	75	12.5	External	Stainless Steel AISI 316	19.95
CB-EX250S	250	250	75	12.5	External	Stainless Steel AISI 316	42.50

## CORRUGATED RAFTER BRACKETS

All sizes in mm - All prices exclude GST

### Corrugated Rafter Brackets AISI 316

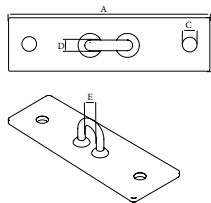


Code	L	W	A	A2	H	Material	Price
RB-COR	285	64	10	8	22	Stainless Steel AISI 316	29.00

## WALL PLATES

All sizes in mm - All prices exclude GST

### Stud Wall Bracket AISI 316

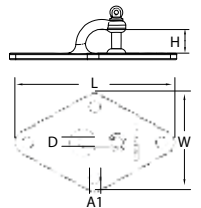


Code	A	B	C	D	E	Price
STB-150G	150	40	11	8	14	12.40
STB-150S	150	40	11	8	14	18.55

### ProRig® Diamond Shackle Wall Plate AISI 316

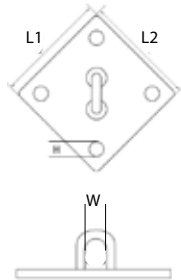


PRORIG  
ORIGINAL DESIGN



Code	Size	D	L	W	H	A1	BL	Price
S3213-180PR	180 x 110	10	180	110	19	12.5	4500	23.20

### Wall Plates - Diagonal Eye



#### Galvanised

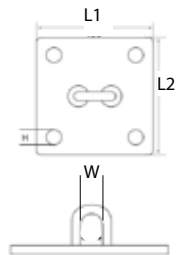
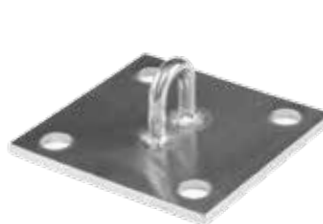
Code	Size	L1	L2	W	H	Material	Plating	Price
WPD-100G	100 x 100	100	100	13.5	13	Steel	Galv	8.40
WPD-150G	150 x 150	150	150	19	13	Steel	Galv	9.05

#### AISI 316

Code	Size	L1	L2	W	H	Material	Price
WPD-100S	100 x 100	100	100	13.5	13	Stainless Steel AISI 316	27.20
WPD-150S	150 x 150	150	150	19	13	Stainless Steel AISI 316	34.20

Diagonal wall plates reach more bricks than the standard square plates.

### Wall Plates - Horizontal Eye



#### Galvanised

Code	Size	L1	L2	W	H	Material	Plating	Price
WPH-100G	100 x 100	100	100	13.5	13	Steel	Galv	8.40
WPH-150G	150 x 150	150	150	19	13	Steel	Galv	9.05

#### AISI 316

Code	Size	L1	L2	W	H	Material	Price
WPH-100S	100 x 100	100	100	13.5	13	Stainless Steel AISI 316	27.20
WPH-150S	150 x 150	150	150	19	13	Stainless Steel AISI 316	34.20



# MIAMI STAINLESS

EXPECT QUALITY- EXPECT SERVICE - EXPECT VALUE

## DRILL BITS

OAL = Over All Length FL = Flute Length All sizes in mm - All prices exclude GST



### Sutton Cobalt Drill Bits

- Point Type & Angle:**  
Split 135°
- Material:**  
Cobalt
- Surface Finish:**  
Colour Tempered Cobalt
- Suitable for:**  
Metal / Stainless Steel /

Code	Size	OAL	FL	Price
DCB-030	3.0	61	33	4.98
DCB-035	3.5	70	39	5.46
DCB-040	4.0	75	43	6.26
DCB-045	4.5	80	47	6.85
DCB-050	5.0	86	52	8.10
DCB-055	5.5	93	57	9.33
DCB-060	6.0	93	57	10.74
DCB-065	6.5	101	63	11.59
DCB-070	7.0	109	69	13.55
DCB-075	7.5	109	69	15.35

Code	Size	OAL	FL	Price
DCB-080	8.0mm	117	75	16.54
DCB-085	8.5mm	117	75	18.21
DCB-090	9.0mm	125	81	19.96
DCB-095	9.5mm	125	81	22.34
DCB-100	10.0mm	133	87	23.81
DCB-110	11.0mm	133	87	31.13
DCB-120	12.0mm	151	101	39.64
DCB-130	13.0mm	151	101	46.87
DCB-0873	11/32"	119	86	19.58



### Sutton Viper Drill Bits

- Point Type & Angle:**  
Viper 118°
- Material:**  
Hss
- Surface Finish:**  
Bright
- Suitable for:**  
Metal / Wood / Plastic

Code	Size	OAL	FL	Price
DVP-030	3.0	61	33	2.21
DVP-035	3.5	70	39	2.41
DVP-040	4.0	75	43	2.74
DVP-045	4.5	80	47	2.97
DVP-050	5.0	86	52	3.47
DVP-055	5.5	93	57	3.98
DVP-060	6.0	93	57	4.47
DVP-065	6.5	101	63	5.00
DVP-070	7.0	109	69	5.73
DVP-075	7.5	109	69	6.46

Code	Size	OAL	FL	Price
DVP-080	8.0mm	117	75	6.95
DVP-085	8.5mm	117	75	7.77
DVP-090	9.0mm	125	81	8.55
DVP-095	9.5mm	125	81	9.43
DVP-100	10.0mm	133	87	10.10
DVP-110	11.0mm	133	87	13.07
DVP-120	12.0mm	151	101	16.54
DVP-130	13.0mm	151	101	19.52
DVP-0873	11/32"	119	86	8.21

### Sutton Long Series Drill Bits



- Point Type & Angle:**  
Standard 118°
- Material:**  
Hss
- Surface Finish:**  
Bright Blue
- Suitable for:**  
Metal / Wood / Plastic

Code	Size	OAL	FL	Price
DLS-040	4.0	146	86	7.25
DLS-050	5.0	152	92	9.64
DLS-075	7.5	162	102	16.81

## Stayput™ FITTINGS

All sizes in mm - All prices exclude GST

### Stayput™ Dome Hook (Horizontal)



Code	Size	Fixing	Price
DHOOK-HBL	60	Horizontal	1.46
DHOOK-HCE	60	Horizontal	1.46
DHOOK-HCL	60	Horizontal	1.46
DHOOK-HGR	60	Horizontal	1.46
DHOOK-HIV	60	Horizontal	1.46
DHOOK-HTE	60	Horizontal	1.46
DHOOK-HWH	60	Horizontal	1.46

### Stayput™ Dome Hook (Vertical)



Code	Size	Fixing	Price
DHOOK-VBL	60	Vertical	1.46
DHOOK-VCE	60	Vertical	1.46
DHOOK-VCL	60	Vertical	1.46
DHOOK-VGR	60	Vertical	1.46
DHOOK-VIV	60	Vertical	1.46
DHOOK-VTE	60	Vertical	1.46
DHOOK-VWH	60	Vertical	1.46

### Stayput™ Dome Hook (Saddle)



Code	Size	Fixing	Price
DHOOK-SBL	60	Saddle	1.46
DHOOK-STE	60	Saddle	1.46
DHOOK-SWH	60	Saddle	1.46



White - WH
Ivory - IV
Cement - CE
Clay - CL
Terracotta - TE
Green - GR
Black - BL

Designed for securing fabric to a flat surface using Stayput™ shock cord loops in either horizontal or vertical tension applications. Applications include: Sand pit covers, pool covers, boat deck fittings, Café Blinds etc. The low profile design minimizes the risk of being a trip or snag hazard. The Dome Hook is a safer option in foot traffic areas. Stayput™ Dome Hooks suit 8g screws.

### Stayput™ Dome Shock Cord Loop



Please specify black or white when ordering.

Code	Length (mm)	Price
SCORD-70	70	1.95
SCORD-80	80	1.95
SCORD-90	90	1.95
SCORD-100	100	2.05
SCORD-110	110	2.05

Allows for simple installation in varying thicknesses of fabric without the need for any special tools. Greater contact area with fabric reduces the risk of tearing out causing damage. Brass machine pressed crimps on the cord will not rust or pull off. The fitting can be removed and re-fitted to be re-used or fitted with a new cord. Suitable for use in various thicknesses fabric up to 2.7m.

### Stayput™ Spin Cut Tool



Code	Size	Price
SCUT-06	6mm (1/4")	35.00



# MIAMI STAINLESS

EXPECT QUALITY- EXPECT SERVICE - EXPECT VALUE

## HAND SWAGING TOOLS

All sizes in mm - All prices exclude GST



HS-6810CR

HS-345CR

HS-14CR

### Croc DIY Hand Swager & Cutter

Code	Swages Wire	Brand	Length	Weight	Quality	Price
HS-14CR	1.5, 2, 2.5, 3, & 3.2	Croc	360	930g	Average	35.55



Ideal for DIY use

*This tool incorporates both swaging and cutting functions to provide quick and easy installation.*



Swages 1.5mm to 3.2mm wire

### Croc HS-345CR Professional Hand Swaging Tool

Code	Swages Wire	Brand	Length	Weight	Quality	Price
HS-345CR	3, 3.2, 4 & 5mm	Croc	780	3.8kg	Very Good	66.50



Ideal for shade sail installations



Recommended for high repetition use



Swages 3, 3.2, 4 & 5mm wire

### Croc HS-6810CR Professional Hand Swaging Tool

Code	Swages Wire	Brand	Length	Weight	Quality	Price
HS-6810CR	6, 8 & 10mm	Croc	1060	9.0kg	Very Good	135.50



Ideal for heavy duty installations



Recommended for high repetition use



Swages 6, 8 & 10mm wire



Scan this QR code with your smart phone to see our video on hand swaging.



Hand Tools

Croc® professional hand swaging tools are high quality and specifically designed for use with copper and nickel plated copper swaging sleeves.

## WIRE ROPE CUTTERS

All sizes in mm - All prices exclude GST



WC-10HIT

WC-08EC

WC-08OPT

WC-06HIT

WC-06OPT

WC-04CR

WC-04HIT

Code	Cuts ST/ST	Length	Weight	Brand	Price
WC-04CR	4mm	195	305g	Croc	11.70
WC-04HIT	4mm	195	305g	HIT	48.15
WC-06HIT	6mm	335	706g	HIT	165.05
WC-06OPT	6mm	450	1.5kg	OPT	87.70
WC-08OPT	8mm	600	2.1kg	OPT	104.15
WC-08EC	8mm	450	1.8kg	Econ	46.50
WC-10HIT	10mm	520	1.1kg	HIT	342.25



## LOCKWIRE

All prices exclude GST

Stainless Steel Safetywire / Lockwire



Main canisters are molded from high density polyethylene that won't degrade and will keep the wire free of grease and corrosive materials.

Code	Wire Size	Total Length	Price
LW-020	0.020"	283 Metres	43.65
LW-025	0.025"	181 Metres	41.45
LW-032	0.032"	110 Metres	35.65
LW-041	0.041"	67 Metres	32.70
LW-051	0.051"	43.7 Metres	34.00

## CUSTOM SHADE SAIL BRACKETS

Get custom shade sail brackets with our in-house fabrication service.



Provide us with your custom design and we will fabricate it to your specifications. Pricing is based on an hourly rate and cost of materials used. We carry a large stock of materials and take requests for special orders. Contact Miami Stainless to discuss your requirements.



# MIAMI STAINLESS

EXPECT QUALITY- EXPECT SERVICE - EXPECT VALUE



**PRO RIG**

- versus -

**ECON**

ProRig Hardware has been the benchmark for the highest quality stainless steel hardware for over ten years and will continue to be the Miami Stainless flagship offering, but every now and then you need to offer more than just quality and service... Introducing Econ Hardware; The Quality Standard.

Miami Stainless has introduced a larger range of Econ Hardware products, which now gives you a greater choice and the flexibility to meet the needs of your customers when your budget might be a little tight. Best of all, you still receive the same unmatched service and expert knowledge that you have come to expect from Miami Stainless.

So what exactly is the difference between ProRig and Econ?

**PRO RIG**

**Benefits**

**ECON**



Quality  
Design  
Price  
Usability  
Maintenance



**PRO RIG**

**Quality**

**ECON**



Reliability  
Durability  
Precision  
Materials  
Controls



Features	Material Grade	Electropolish	Break Loads	Performance	Visual Appearance	Product Satisfaction
<b>PRO RIG</b>	316 / 304	✓	✓	10/10	10/10	10/10
<b>ECON</b>	316 / 304		✓	6/10	7/10	8/10



**FREE Australia Wide Shipping**  
For Orders Over \$200<sup>+GST</sup>

## TERMS & CONDITIONS

© COPYRIGHT MIAMI STAINLESS 2017. All images contained in this brochure are the copyright of Miami Stainless Pty Ltd and are not to be copied without permission.

**Prices:** Every effort will be made to maintain prices as quoted in this brochure, however due to increased volatility in the stainless steel market Miami Stainless cannot guarantee these prices for an extended period of time and reserves the right to change these prices without prior notice. All prices quoted in this brochure are trade prices and are only valid to the intended recipient.

**Price Match Guarantee:** The item must be in stock, the items must be identical, we need to be able to verify the offer being made. Price Match Guarantee request must be made at the time of purchase, does not include quotes from online or sole traders, the item quantity for the Price Match Guarantee must be the same as that on the offer.

**Disclaimer:** Whilst every effort has been made to ensure all product specifications are accurate; Miami Stainless Pty Ltd highly recommends getting confirmation of these before placing an order if they are important to the purchases. Miami Stainless Pty Ltd will not be held responsible for any deviations in product specifications contained within this brochure.

**Quality:** The stainless steel hardware you purchase from Miami Stainless comes from suppliers of only the highest quality products. Although these higher quality products are more expensive for us to buy, the end user will be more than satisfied with its long term dependability. Not all 316 grade stainless is the same quality. We regularly test samples from other suppliers and find that dependable, trusted quality is hard to come by. Products described as 316 can often have a rust resistance less than 304. These stainless products are cheap but can rust quickly. This "cheap" stainless can end up being very expensive if it fails in an installation and you are required to replace all of your original work at your own cost. As an installer of stainless products you will want a product that will not let you down. Miami Stainless is pleased to offer you dependable, trusted quality products at a good price.

**Payment:** Payment is required before we can dispatch your order. We can accept Visa, MasterCard and Bankcard over the phone, or you can transfer the amount into our account via internet banking or by direct deposit at the bank. (Please fax us the remittance as the amount may not show up in our account until the following day).

ABN: 62 101 809 796

Bank Details: WESTPAC – BSB NO. 034238 – ACCOUNT NO: 174217

**Delivery:** Immediate dispatch of all goods displayed in this catalogue:

By Road: for a maximum charge of \$8-\$15 (Australia Wide)  
Free road express shipping for orders over \$200 excluding GST.

By Air: for around \$3.00 per kilo. (Australia Wide)  
Excludes handrail tube.



facebook.com/miamistainless