

MIAMI STAINLESS

ARCHITECT 2018

CONTENT

ABOUT US 02

GREEN WALL 04

POSTS 08

STAND-OFF BRACKETS 10

HANDRAIL TUBE & FITTINGS 10

BALUSTRADE SYSTEMS 12

CATENARY & SIGNAGE 19

WIRE ROPE 20

TENSILE ARCHITECTURE 22





Miami Stainless is an Australian owned and operated designer, fabricator, importer and distributor of high quality stainless steel hardware specialising in the architectural and shade structure industries. Celebrating 15 years of continued success, Miami Stainless supplies over 4000 items including complete balustrade systems, shade sail fittings, wire rope, handrail, custom post solutions, glass balustrade hardware, tools and accessories.

We invest heavily in our people and are proud to continually exceed the expectations of our customers. We relentlessly strive to set the next standard of business practice by staying highly focused as a fully functional team committed to developing, producing and delivering our high value products.

Customer Service & Testimonials

Our focus is always the customer and understanding how we can improve their experience with us. We are proud to have an experienced customer service team that provide phone and online support.

Our expert team is always ready to assist with your design questions, product selection and technical support. Our purposefully designed communication tools allow you to search, design, learn about and buy in your own time. We have supplied thousands of stainless steel solutions across the globe giving you direct access to unequalled expertise and innovation.

The majority of our new customers are recommended to us by their friends, co-workers or family who already use Miami Stainless. This is the best compliment we can receive and we enjoy getting feedback from our customers. Here are a few of their testimonials:

"You guys are a pleasure to deal with and I am glad to have you as part of the team that allows me to do what I do with confidence and pride." - **Rob, Perth, WA**

"Thanks very much for the extremely fast service! This means a lot especially when I'm ordering last minute!!" - **Geoff, Tallebudgera, QLD**

"I wanted to especially thank you guys for your outstanding service. Since I started my business on the Gold Coast 5 months ago, I have experienced consistently terrible service from many other Queensland businesses, from unreturned emails and phone calls, to incorrectly supplied goods, late deliveries and incorrect invoices. Miami Stainless, though, has shone like a beacon of light in an otherwise dim business-to-business landscape. Keep up the good work!"
- **Gavin, Robina, QLD**

"I received my order on Friday and was very happy with your product and your help and service. I found it easy to install and it looks great. Thanks for your help and quick service I would gladly recommend your product to anyone." - **Cameron, Launching Place, VIC**

"Overall, your telephone manner, willingness to assist and prompt responses have been to say the least, outstanding! I was originally daunted/anxious with ensuring measurements, selections, cost/wastage were correct, your efforts/manner and your professional attitude assisted with the whole process. If I know anybody looking for similar gear, I will be giving them your name and number." - **Luke, Ooralea, QLD**

Why **Miami Stainless?**

Innovation & Development

Industry Experts

As industry experts we keep up-to-date with the latest news, information and customer feedback allowing us to identify trends and issues. Our product development is based on this research so you can be assured you have access to the most innovative and in demand products on the market.

Advanced Streamline Balustrade Systems

Miami Stainless supplies some of the most advanced streamline balustrade systems available. We supply pre-welded, pre-drilled modular posts for easy on-site installation to suit any project.

Testing Facilities

Our testing facilities allow us to monitor quality and provide the most accurate product data. We provide maximum breaking strains for all our load bearing products as well as in-depth information including technical drawings and specifications.



Importer & Supplier

With a global network, Miami Stainless is one of the most specialised stainless steel architectural and shade structure hardware suppliers in Australia. We have built strong relationships with our business partners for over a decade that allow us to be involved directly in the manufacturing process of the products we purchase. Together we ensure our high-quality standards are met and use this expertise to drive product innovation.

Our products are found in a wide range of building projects around the world such as:

- aged care & retirement facilities
- office & commercial complexes
- schools & education institutes
- amusement parks
- hospitals
- hotels & resorts
- multi-density & single dwellings
- marinas, docks & piers
- sport centres & stadiums
- multi-storey car parks
- parks & playgrounds

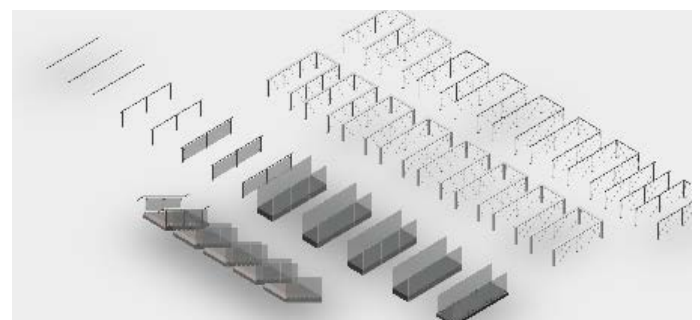


Miami Stainless stocks and sells the full range of high quality ProRig stainless steel hardware, wire balustrade and wire rope products. ProRig products have been sold in Australia for more than a decade. The brand was originally introduced as a means of differentiating the high quality ProRig stainless steel hardware and wire rope products we sell from cheaper and lower quality products flooding the market. The ProRig brand name has become synonymous with the supply of innovative, high quality, tried and tested stainless steel products.

Autodesk Revit Files

Download all Revit files detailing our Post, Wire and Glass Balustrade systems.

spec.miamistainless.com.au





Green Wall

Miami Stainless stocks a full range of hardware and wire rope suitable for a variety of green wall applications.

The Miami Stainless range of green wall hardware allows you to add a stunning external aesthetic to commercial and residential projects.

Our Blue Wave Greenline Post system is manufactured in Denmark from the highest quality stainless steel, producing a strong and long lasting green wall. The systems are suitable for vertical and horizontal installations, and used with Blue Wave net clip hardware, your imagination is the only limitation to your design.



Greenline Post

Manufactured by Blue Wave

- Sturdy & durable
- Easy to install
- 316 grade stainless

The Greenline post by Blue Wave is both extremely easy to install and provides for an elegant and stylish finish to your green wall project.

The posts have two holes positioned at right angles to each other making it perfect for regular trellis designs of vertical wires and/or horizontal wires, or the diamond trellis design.

The posts have the versatility of being suitable for both end or intermediate posts.

Movable Vertical Green Wall Concept

In 2017 the iconic Oasis Shopping Centre in Broadbeach, Queensland undertook an impressive \$25 million overhaul. This redevelopment, overseen by property managers Cerno Management, included an upgrade to the fresh food areas inside the complex and a complete overhaul and redevelopment of the restaurant precinct facing into the Broadbeach mall.

Gold Coast based architectural firm Buchan Group designed the upgrade, working closely with local council to fit their masterplan for Broadbeach.



OUTDOOR RESTAURANT AREA

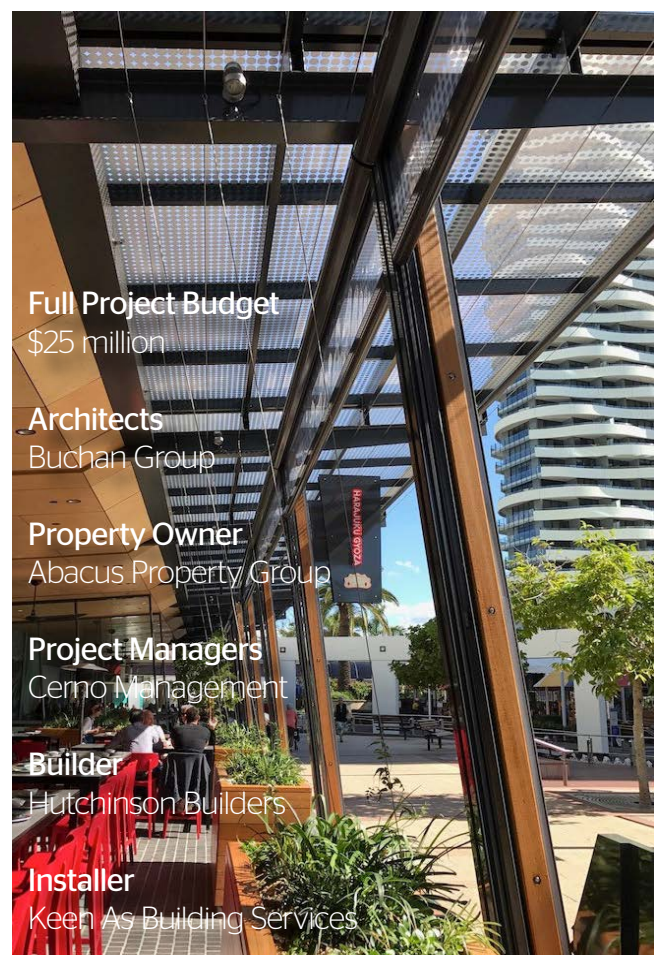
The third stage of the project, the redevelopment of the restaurant precinct, included indoor and outdoor renovations. Buchan Group's aim was to re-invigorate the dining precinct facing the mall that had become worn and tired over many years. The outdoor area included a modern take on the traditional vegetation of the area using Miami Stainless green wall systems incorporated in a unique and functional capacity. These green areas include movable planter boxes connecting to vertical green wall wire systems, reaching up to overhead horizontal wires for the plant systems to grow along.



FLEXIBILITY IN DESIGN

We spoke to Buchan Group to get an understanding of how and why they chose this system. The area faces North so it allows sun penetration in winter while also providing reasonable protection from summer storms and the prevailing South-East winds. The vertical gardens were included to increase shade to the seated areas but also to increase the sense of calm and coolness within the environment. The movable planter boxes, with vertical wires connected to overhead horizontal wires via an adjustable swaged/loop eye, were designed to allow greater flexibility in relation to tenancy changes over time.

Hutchinson Builders sub-contracted local green wall installer Keen As to complete the job.



Full Project Budget

\$25 million

Architects

Buchan Group

Property Owner

Abacus Property Group

Project Managers

Cerno Management

Builder

Hutchinson Builders

Installer

Keen As Building Services



Seamlessly Finished Stainless Steel Round Post

ProRail has developed a post that is unique in both design and function.

They are available in mirror polish or satin finish, 3.0mm or 1.6mm tube thickness, and made from the same high quality AISI 316 marine grade stainless steel that you are familiar with from our custom post range, plus a few new extras.

Posts come pre-drilled to your specifications with a fully welded ProRail heavy duty base plate, seamlessly welded saddle base, and attached top saddle for a stylish and easy to install balustrade post. The heavy duty base plate features multiple fixing holes, position indicator lines and an easy post leveling system using plastic packers and grub screws.

Visit www.miamistainless.com.au/prorail-round-posts

PRO RAIL[®]



Custom Posts

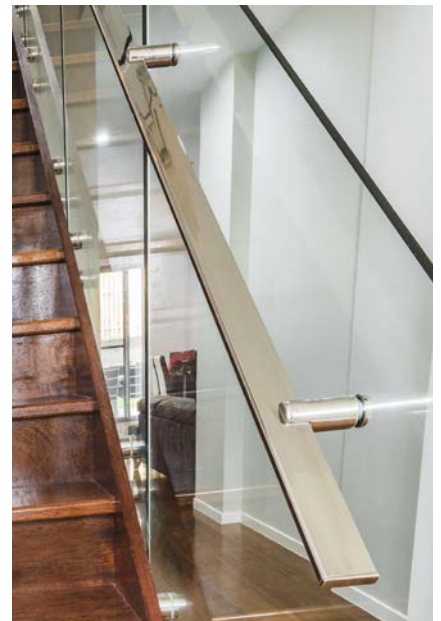
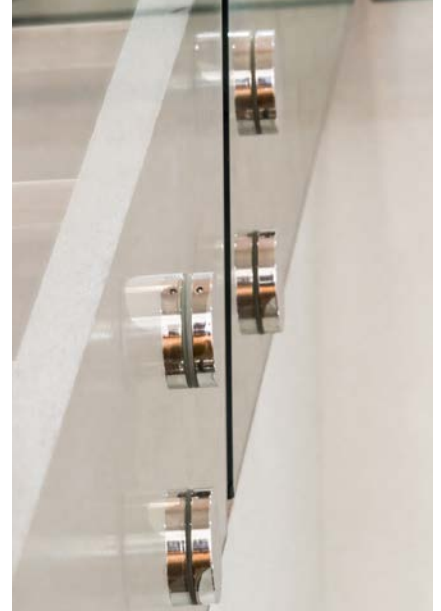
Manufactured In-House

- Round Posts
- Square Posts
- RHS/Flat Bar Posts

Our in-house post manufacturing facility means custom posts have never been so accessible. With more options and quicker lead times, Miami Stainless custom posts are fabricated from high quality AISI 316 marine grade stainless steel in either a matte satin or mirror polish finish. All Miami Stainless posts are specifically designed and produced to suit stainless steel wire balustrade systems.

Stand-off Brackets

Stand-off brackets allow frameless glass balustrade to be installed in almost any location. Miami Stainless carries a range of ultra high quality ProRail standoff brackets made of AISI 316 marine grade stainless steel. Stand-off brackets are available in either a matte satin or mirror polish finish, and come with a full set of rubber inlays to suit each glass thickness.



Handrail Tube

Stainless steel handrail is commonly found in coastal areas for its resistance to the elements and great looking finish. We supply only the highest quality AISI 316 marine grade stainless steel tube. Available in round, rectangular and square hollow section. All profiles can be supplied in either mirror polish or satin finish. This product is sold by the metre and can be cut to your site measurements (max. length 6 metres). Shipping is constrained to a maximum length of 3 metres with joiners at post intersections for streamline site installation.

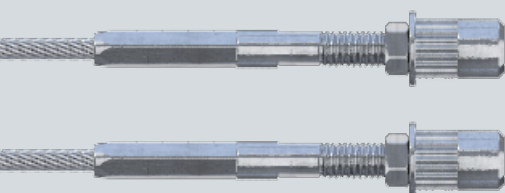


Post & Handrail Fittings

We carry a huge range of ProRail post and handrail fittings made from the high quality AISI 316 marine grade stainless steel the brand is known for. ProRail fittings suit standard size tubing and are simple to install with no special tools required. All ProRail components suit timber and stainless steel handrails and 1.6mm or 3.0mm walled stainless steel posts. ProRail post fittings are unique, stylish and functional designs that are available in matte satin or mirror polish. Using high quality fittings from start to finish gives a professional look that will stand the test of time.

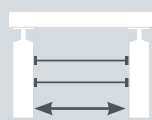


Metal | Wire Balustrade Systems



Feature Nutsert Swage Stud System™

The **Nutsert** Swage Stud System is a best seller for metal balustrade as it is easy to install and has one of the least visible fittings. The swage studs screw directly into the blind nut rivets and are secured in place with a hex nut, which reduces bulkiness added to the overall look.



Section Length
6 Metres



Not Suitable for
Angled Sections



Factory Swaging
Available

PRO RIG

ORIGINAL DESIGN

Patent No. 2009100455

Quick-Lock System™



Section Length
10 Metres



Suitable for
Angled Sections



Factory Swaging
Available

A ProRig Original Design, the Quick-Lock System is a newly developed wire balustrade fitting. The installation is as simple as inserting the fitting and giving it a tug to secure inside the post, leaving absolutely no visible fitting.

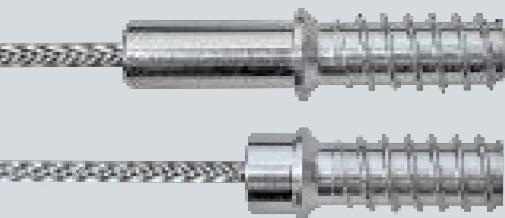
The tensioner and swage stud on the opposite end creates tension on the wire and sits on the outside of the post to complete the streamline look.

PRO RIG

ORIGINAL DESIGN

Flip Toggle Patent No.
2017100567

Timber | Wire Balustrade Systems



Feature Insert Tension Rod System™

The ProRig Original Design DIY **Insert** Tension Rod System is popular for its unique streamline design that has few visible fittings once installed. This system is designed with the ability for full assembly on-site using a hex hand swaging tool, which can be more time consuming to install but gives flexibility when exact measurements are unknown.



Section Length
6 Metres



Not Suitable for
Angled Sections



Requires
On-site Swaging

PRORIG

ORIGINAL DESIGN

Patent No. 2009100455

Insert Swage Stud System™



Section Length
10 Metres



Not Suitable for
Angled Sections



Factory Swaging
Available

The Insert Swage Stud System is a best seller for timber balustrade as it is easy to install and has the least visible fittings. The swage stud screws directly into the threaded insert and is secured in place with a hex nut, for a sleek aesthetic.

PRORIG

ORIGINAL DESIGN

Patent No. 2009100455

Vertical Balustrade

Many of our balustrade systems can be used in vertical applications, offering a contemporary design aesthetic to your next project. Vertical wire balustrade can be used on staircases, pool fences, balconies, verandahs and decks, provided the fall is less than 4 metres.





Australian Streamline Balustrade Solution for New York Designer

It only makes sense that when it came time for Senior Designer Robert Gross from award-winning design firm Lee H. Skolnick Architecture + Design Partnership to build a home for his parents he chose New York bespoke stair builder Lunna Designs.

GRAND DESIGN & HIGH EXPECTATIONS

Lee H. Skolnick Architecture + Design Partnership specialises in custom, high-end residential design, and as such Robert is used to a pretty high level of customisation, specification, and quality fabrication on his projects. Robert custom designed the rail system himself, which consists of stainless steel wire cable, with matte black posts and finished with rift cut white oak handrail.

THE CRAFTSMANSHIP

Lunna Designs' owner Frank Miano met with Robert onsite several times. With meticulous attention to detail Frank, site foreman Ariel Argueta and the Lunna design team produced the shop drawings, sourced the quality products and used their technical expertise to bring this project to life.

After a couple of small design revisions between the parties, the project started to bloom. Frank explains, "We fabricated the steel posts and wood handrail locally. However, Robert had expressed that he preferred as little visible hardware on the wire systems as possible. We found that a number of companies in the US had hardware suitable for the project however they were bulky in their design. I couldn't find what I was looking for locally, so that is when I started looking overseas and discovered Australian owned hardware company Miami Stainless's range of streamline fittings."





MIAMI STAINLESS SOLUTION

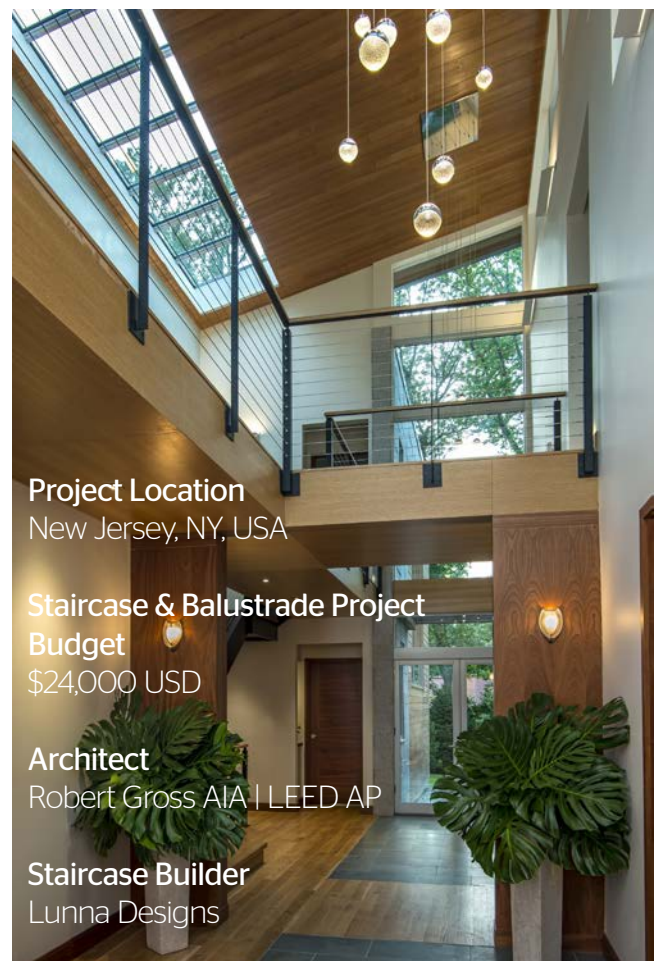
Frank explained to the team at Miami Stainless the need for the system to be as streamline and invisible as possible. The solution was a custom balustrade system using ProRig Original design fittings. For the balustrade throughout the home we used the Nutsert Swage Stud system on one end of each wire and the ProRig Original Design Flip Toggle system on the other. The Flip Toggle system allows the wire to be inserted and fixed within the metal posts with no adjustment hardware visible on the outside. On the staircases, we used the Nutsert Swage Stud with swivel connectors, allowing the wires to be installed at any angle required.

VISION TO REALITY

The result is an exceptional staircase and balustrade design. Lunna Designs succeeded in exceeding Roberts expectations in delivering an amazing job: "Thank you again for all of the sophisticated work that you did in engineering, detailing, and fabricating the stair and bridge railings for the house that I designed for my parents."

Robert also praised the quality of the Miami Stainless product, stating "Your wire products are crisp, clean and have held up exceptionally well" and added that they "are getting a lot of positive comments about the lightness and sleekness of the railing system."

Miami Stainless would like to thank both Frank Miano from Lunna Designs and Robert Gross from Lee H. Skolnick Architecture + Design Partnership for their contribution to this article and for sharing with us their experiences with our products.



Project Location
New Jersey, NY, USA

Staircase & Balustrade Project Budget
\$24,000 USD

Architect
Robert Gross AIA | LEED AP

Staircase Builder
Lunna Designs

SWAGELESS BALUSTRADE SYSTEM

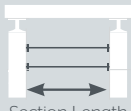
Manufactured by Blue Wave

This revolutionary Blue Wave Swageless System eliminates the need for factory swaging, making it one of the easiest and most flexible systems to install.

Wires can be cut to length onsite and inserted into the swageless stud for immediate install. By inserting a screw eye into timber posts or eye bolt into the blind nut rivet for metal posts, the attached fittings can move freely to adjust to almost any angle. This system can achieve section lengths up to 10 metres.

METAL POSTS

Swageless System



Section Length
10 Metres

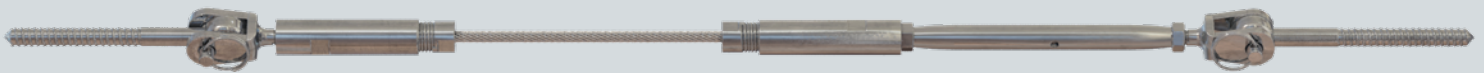


Suitable for
Angled Sections



TIMBER POSTS

Swageless System

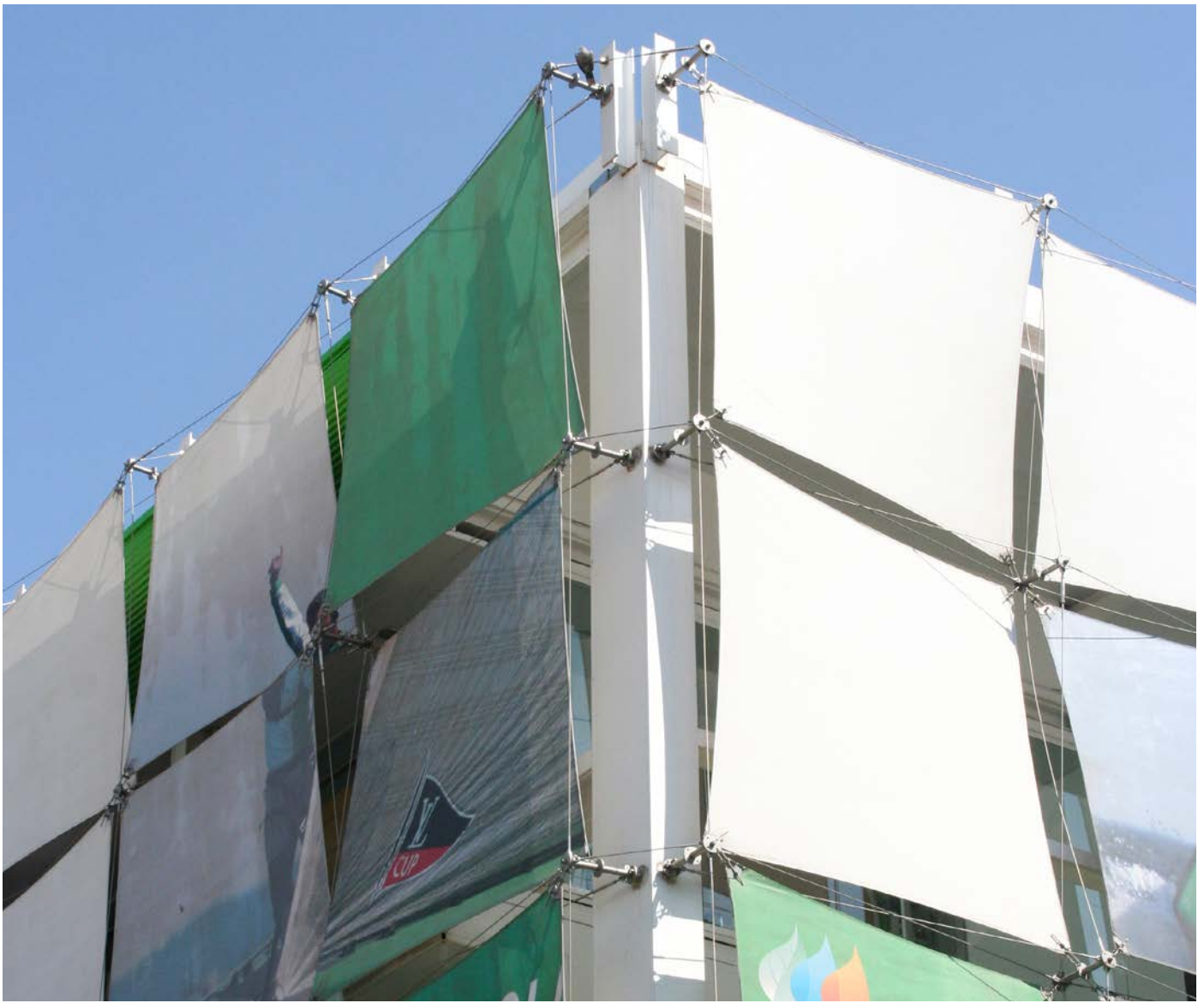


Section Length
10 Metres



Suitable for
Angled Sections





Catenary & Signage

Want it up high? The principles of balustrade design with load factors means we can get it there! Whether it is for suspending electrical cables, lighting, feature decorations or advertising banners, we can provide a multitude of options to suit your requirements.

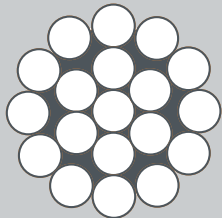


Wire Rope

ProRig wire rope is sourced from a superior Korean manufacturer to supply you with what we believe is the best wire rope available worldwide. We qualify the manufacturer based on their ability to meet stringent standards of material quality, surface brightness, and finish.

Highly skilled staff, state of the art equipment, innovation and strict quality control ensure that the highest possible quality is achieved every time. This has resulted in ProRig wire rope being tried and tested in thousands of applications around Australia for more than a decade without a single product fault or failure.

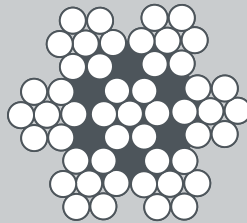
- Reliable product manufactured from high quality AISI 316 marine grade stainless steel
- Ultra smooth and shiny finish for maximum corrosion resistance and aesthetic appeal
- 1.2mm-16mm available ex-stock in 1 x 19, 7 x 7, 7 x 19 constructions; up to 32mm available to order
- 50, 100, 305, 1000 & 2000 metre rolls available
- Range of sizes and colours available ex-stock with PVC coating



1 x 19 Wire

Sizes available 1.6mm - 16mm

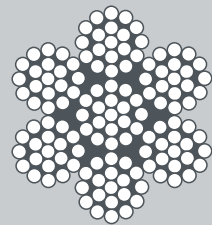
This wire is non-flexible, ideal for **straight runs**, with a higher breaking strain due to a smoother surface finish. Can be used for wire balustrade, tension membrane, vinyl shade structures, architectural rigging, green wall/cable trellis, shop fittings and marine applications.



7 x 7 Wire

Sizes available 1.2mm - 12mm

This wire is semi-flexible and ideal for **bending** around corners. Can be used for wire balustrade, shade structures and sails, architectural rigging and green walls or cable trellis.



7 x 19 Wire

Sizes available 2.0mm - 16mm

This wire is flexible and ideal for bending around **tight curves**. Can be used for wire balustrade, shade structures and sails, architectural rigging, green wall or cable trellis.



Tensile Architecture

Manufactured in Denmark, Blue Wave wire design systems are suitable for a variety of tensile architecture applications, including fabric structures, bracing and suspension bridges. Their extensive range of hardware extends into large wire sizes up to 36mm and M52.

Blue Wave products come with the assurance of the highest standards of product quality. We work with Blue Wave's product engineers to customise components for the unique needs of tensile structures.





Blue Wave tensile applications include:

- Suspension bridges & shade structures
- Braces & trusses
- Fabric architecture & weather proof structures





ARCHITECTURE CATALOGUE 2018

Free call **1800 022 122**

Fax **1800 022 199**

Email **info@miamistainless.com.au**

Web **miamistainless.com.au**

Revit **spec@miamistainless.com.au**

 facebook.com/miamistainless

ABN: 62 101 809 796

PRO RIG



PRO RAIL

