



State Office
expansion of
133 State Street
3-level parking
garage built into
the hillside

Pedestrian walk and
plaza from riverfront to
Statehouse Green

Court Street 3-level
building that includes
housing, commercial/
mixed-use over a
2-level parking garage

Children's play
space

Close Langdon Street
west of Onion River
Sports and create a
pedestrian plaza link to
children's play space
and parking garage

New river walk

New housing

State Street closed on
weekends during warm
weather: Saturday
for Farmers Market
expansion and
Sunday for events

City Hall plaza with
play fountain and
vehicular speed table

New offices
and retail

Multi-use
path

Rail

Reduced parking to
create riverfront walk
and riparian green
space

Add co-generation to
bio-mass plant

New riverfront park
with park-side café
Summer water fountain
plaza and winter
skating rink

Taylor Street pedestrian
improvements from
bridge to Court Street

New multi-modal
transit center with
housing above

Expanded green space
with amphitheater

White water paddling park

Confluence Park

Move Shaw's to street
front with parking
accessed from the back,
with river view housing
above

Multi-use path

Rail

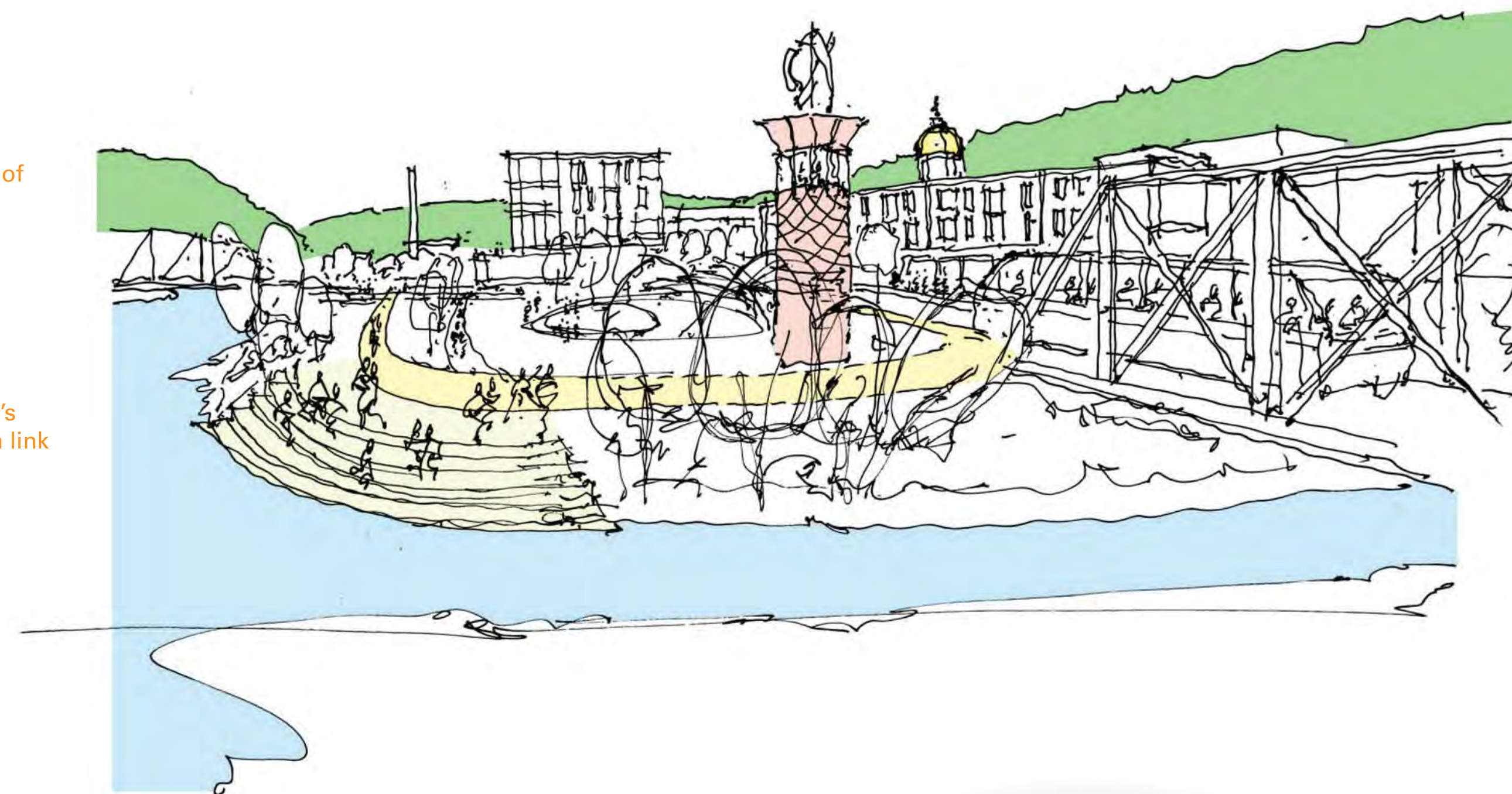
*"Rather than imposing a bold new
vision on the city, the plans should
reinforce the existing city qualities:
as a dense environment, the city
should become more dense, and the
city should become a place that
people would want to come to."*

-- Leo Hollis



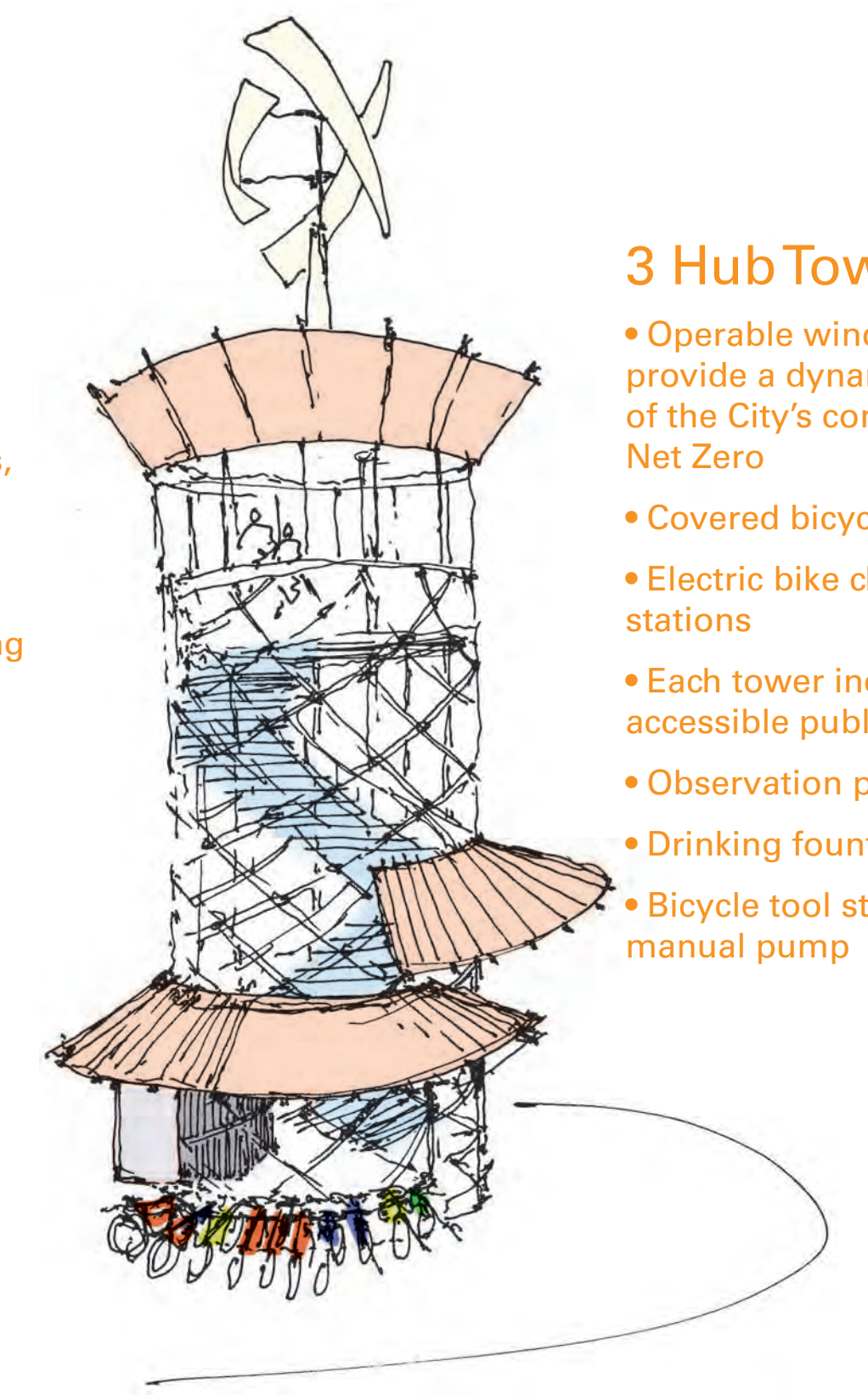
Court Street looking west

- Three level mixed-use building over two levels of parking
- Designated bike lane
- Street-scape to scale with the surrounding neighborhood
- Hub Tower serves as a transition to the children's play area and pedestrian link to Langdon Street



River confluence looking west

- Community event space
- Brings together pedestrians, People Mover, bicyclists, and the mass transit center
- Confluence Park contains a significant increase in housing units
- Hub Tower provides amenities that improve the utility of the park



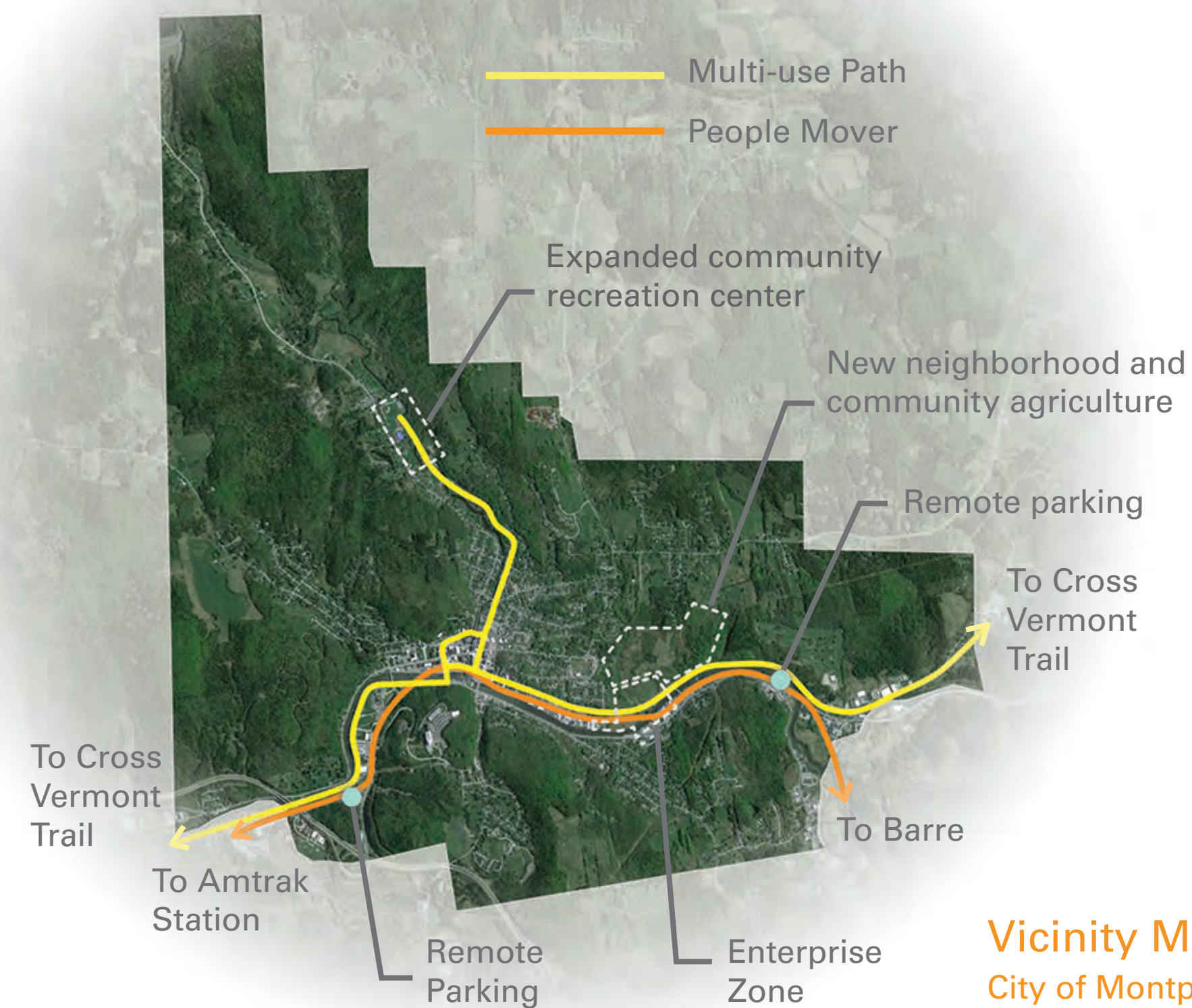
3 Hub Towers

- Operable wind turbine provide a dynamic landmark of the City's commitment to Net Zero
- Covered bicycle parking
- Electric bike charging stations
- Each tower includes accessible public toilets
- Observation platform
- Drinking fountain
- Bicycle tool station with manual pump



Market Plaza

- Formalized market plaza with services
- The Garage building is full-time four-season indoor market and food-processing hub
- Semi-enclosed frame with market platforms serve as place making and transition to the market hall
- North Branch overlook deck
- Market Plaza serves as a significant link between State Street and the riverfront park/multi-use path



Vicinity Map
City of Montpelier

Net Zero Montpelier

- Aggressive weatherization program for existing buildings
- Expand the Biomass District Energy System
- Add co-generation to the Biomass District Energy System
- Reduce vehicles in town by establishing remote parking and People Mover using existing rail line
- Significantly increase pedestrian and bicycle circulation
- Consolidate parking under buildings for both resiliency and to increase opportunities for public space
- Photovoltaic program for all downtown roofs with appropriate exposure
- Significant decrease in impervious surfaces results in better and sustainable storm water management
- Recapture the rivers edge as public resource
- All new construction a minimum 2'-0" above FEMA flood elevation to insure resiliency

Consolidated Parking

- Court Street** (State of Vermont & private)
Potential Parking = 550 spaces
Potential Building, 3 levels = 74,000 sf
- 133 State Street** (State of Vermont)
Potential Parking = 286 spaces
Potential Building, 5 levels = 100,000 sf
- Capital Plaza** site (private)
Potential Parking = 270 spaces
Potential Building = 43,000 sf



Place Making

Space within the city is enhanced and recaptured for public use, performance, market space, and play.



Engaging

By recapturing land for public use community activities can engage the river edges.



Knitting

New paths, primarily for pedestrians, bicycles, and the People Mover provide easier connections between functions in the city core.

