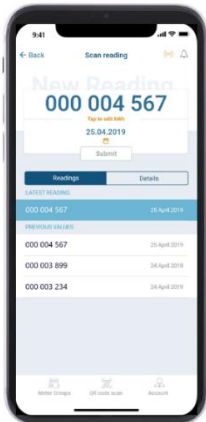



The eSight App for mobile devices provides you a convenient way to enter manual data in a game-changing new interface. Users will experience fast entry of meter readings, eSight walking route support and live synchronization to the eSight system. Available on iOS and Android, you can download the eSight App from your phone's app store.




How the eSight App Works

The eSight App works by firstly connecting users to their existing eSight system. It then provides the ability to add existing walking routes which can be downloaded to the user's mobile device so that updated consumption values can be entered against specified meters.


Meter reads are then sent from the mobile device to the user's eSight system instantly where the new values are stored against the meter. The app also provides notifications for out of date meter readings which can be viewed in the notifications screen.



For Android and iOS



Brand new interface



Enter manual meter readings on the go

Download the eSight App

The eSight App is designed for users to easily enter manual meters reads into an existing eSight system. This modern, intuitive interface allows for fast entry of manually read meter readings, provides eSight walking route support, QR code support and live synchronization to the eSight system.

It can also be used in an offline mode during walking routes, then automatically updating your eSight system when switched back online. The app is available for iOS and Android supported devices and can be downloaded from the App Store (iOS devices) and from Google Play (Android Devices).

