

Make the most of your network with data-driven insights

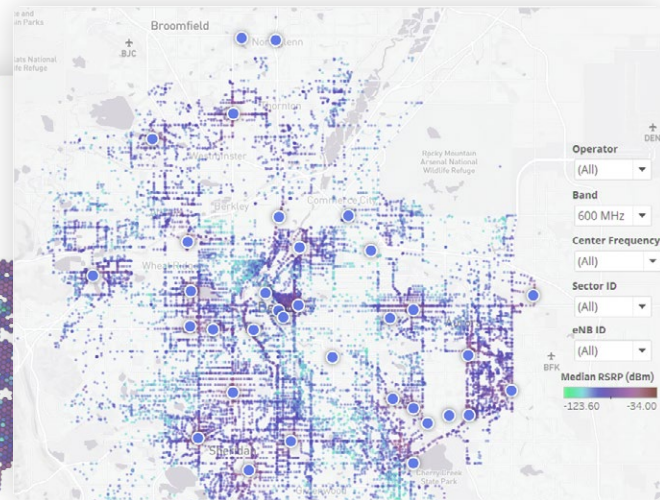
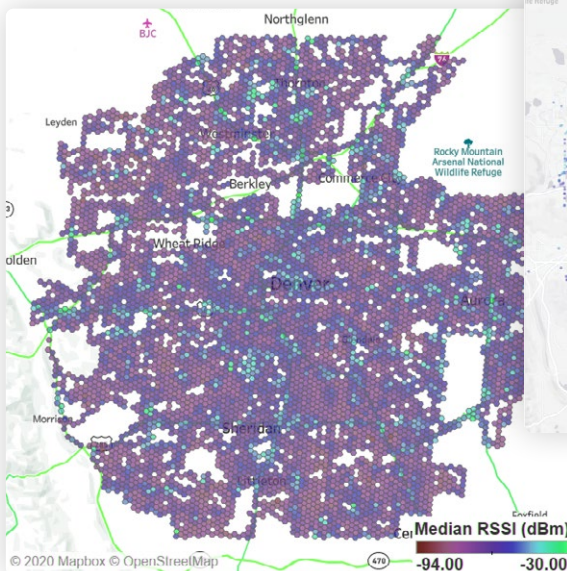


As a network operator, both individuals and businesses rely on your service to power their technologies and to stay connected to what matters most. Optimize your network for better performance, for higher reliability, and to serve more customers with detailed data and insights.

With Aurora Insight you can:

- Pinpoint areas where the network may be stressed, and where additional or reconfigured transmitters may be needed
- See your competitor's spectrum usage versus licensed spectrum and identify their gaps
- Identify poor coverage areas that are candidates for new infrastructure
- Make smarter spectrum investments by ensuring spectrum is clear and identifying the presence of unauthorized signals

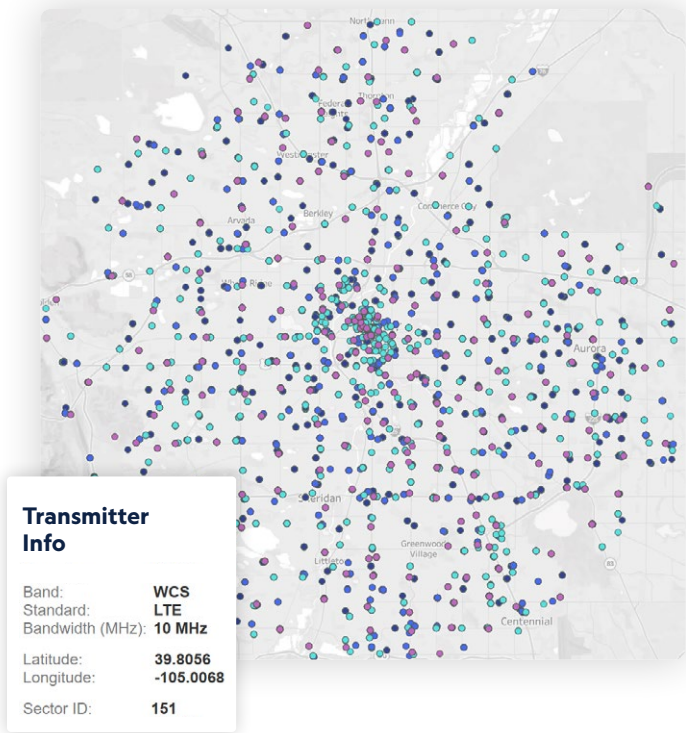
Identify underserved areas



Track network deployments

In 2019 we surveyed over 129,000 miles collecting trillions of spectrum measurements.

Visualize transmitters



We've collected measurements in both domestic and international markets that enable:

- Transmitter occupancy information, including:
 - Operator
 - Transmitter identifiers
 - Band(s) deployed
 - Transmission standard (3G/WCDMA, LTE, 5G TF & NR, 5G FR1 & FR2)
 - Bandwidth occupied
- Wireless activity including: aggregated LTE RSSI, RSRP, or SINR measurements displayed on a customizable map
- Signal power measurements at a given frequency and at a given location:
 - Estimation of frequency bands in use, per use (e.g. mobile, fixed broadband) and per operator
 - Comparison of frequency bands in use versus frequency bands licensed

Learn how we measure by visiting www.aurorainsight.com/how-it-works

Aurora Insight

With offices in both D.C. and Denver, Aurora Insight provides revolutionary insight into the radio spectrum. The company has raised \$18 million in Series A funding and continues to grow their team of spectrum and wireless experts.

CONTACT US FOR MORE INFORMATION

Greg Hull, CCO | greg@aurorainsight.com

