



DeLaRue

The  
Next  
Generation  
of Identity  
Management  
Solutions

## Visuals

Gemini™ is available in a wide range of visible and UV fluorescent colour combinations as illustrated below;

### Visible Colour



Purple



Pink



Orange



Blue



Grey

### Fluorescent Colours



Red + Green



Orange + Green



Red + Green



Yellow + Green



Yellow + Green

### Visible Colour



Yellow



Brown



Red



Light green



Dark green

### Fluorescent Colours



Red + Green



Orange + Green



Orange + Yellow



Red + Yellow



Red + Yellow

**Note:** The colours shown here are representative only and may differ in tone from those in printed security documents.

### Gemini™ and new design variants

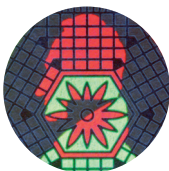
Under UV light source



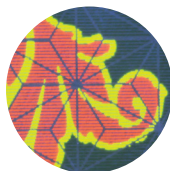
Normal day light



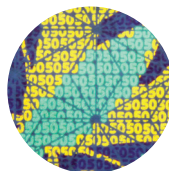
New design variants under UV light source



Gemini™ Blocks



Gemini™ Lines



Gemini™ Microtext

# Gemini™

A specialist printed security feature that appears as a single colour under normal daylight but transforms into two separate fluorescent colours when under UV light.

---

## Classification

Print feature

---

## Security Level

Level 2



---

## Security benefits and threats countered

Gemini™ enhances the overall security of the token by increasing the complexity of design and any attempted reproduction or counterfeit of the feature. It is quick to authenticate by trained users and border control inspectors when viewed under a UV light source.

Highly suitable for use across a variety of identity documents and especially effective when used in conjunction with other features on the bio-data page, observation page and / or end pages of a passport as these are the areas that are typically under the greatest threat of attack.

---

## How does it work

Gemini™ is created by litho printing two separate ultra-violet (UV) fluorescent inks, carefully colour matched and reproduced in extreme close register to appear as a single colour.

---

## Additional Information

Gemini™ design variants now also include Blocks, Lines and Microtext executions making it even harder to reproduce using common counterfeiting techniques.

A wide range of visual and UV fluorescent colour combinations are available enabling the feature to be used both technically and aesthetically, fully integrating it as part of the overall final design.

---

## Demonstrated by

When viewed in normal day light, the printed design feature appears as a single colour, but when held under a UV light source, the print will fluoresce in two striking and different colours. Easy to identify and adds interest to inspection.

---

## Usage

Passports, visa's, certificates, banknotes and other security documents.

De La Rue is a leading provider of sophisticated products and services that keep nations, their economies and their populations secure. At the forefront of identity management and security, De La Rue is a trusted partner of governments, central banks and commercial organisations around the globe.

De La Rue is listed on the London Stock Exchange (LON: DLAR).

If you would like to find out more,  
please email [identity@uk.delarue.com](mailto:identity@uk.delarue.com)  
or visit [www.delarue.com](http://www.delarue.com)

Gemini™ is a trade mark of De La Rue International Limited. The Founder's Head Device, and De La Rue are registered trade marks of the De La Rue Group of Companies. Whilst we have made all reasonable efforts to ensure the accuracy of the information provided in this literature, the description of the products is one made in good faith to illustrate possible uses of our product(s). It is not intended to be relied upon for any specific purpose or use nor does it constitute a definitive or complete statement of the product itself unless it is expressly agreed in a formal contract. De La Rue plc Registered No.3834125, De La Rue Holdings Limited Registered No 58025 and De La Rue International Limited Registered No 720284 are all registered in England with their registered office at: De La Rue House, Jays Close, Viables, Hampshire RG22 4BS. © De La Rue International Limited 2017.