

HIGH VOLUME DRY SHIPPER

PERSONAL PROTECTIVE EQUIPMENT: CRYOGENIC GLOVES, SAFETY GOGGLES

STEP 1

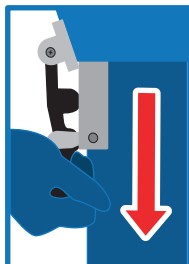
UNLATCHING INSTRUCTIONS



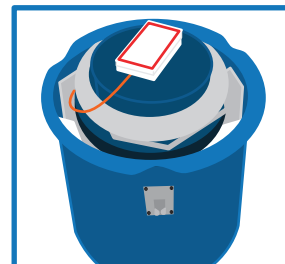
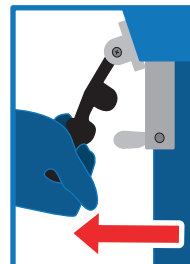
Once the shipper has arrived, remove old shipping pouch and zip-ties.



Remove zip-ties from both black handles with scissors.

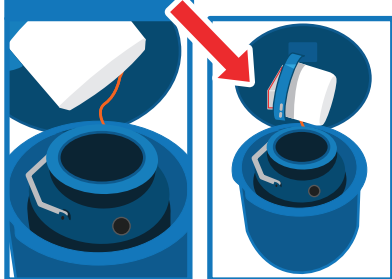


Unlatch both sides by pulling black handle down & away from the shipper.



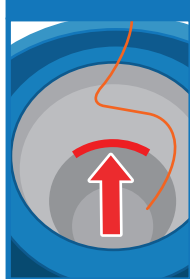
Open lid to expose the dewar.

STEP 2



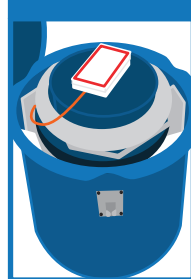
Remove the lid and rest it sideways behind the dewar and against the blue enclosure lid.

STEP 3



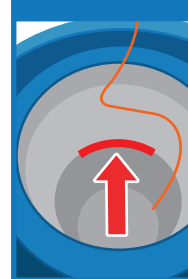
Slowly pour Liquid Nitrogen into opening. Fill the dewar up to the bottom of the neck tube.

STEP 4



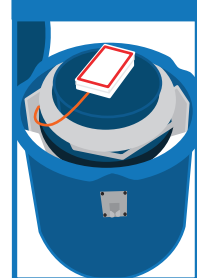
Replace the lid and let the Dry Shipper stabilize, undisturbed, for at least 30 minutes.

STEP 5



Fill the dewar again, up to the bottom of the neck tube.

STEP 6



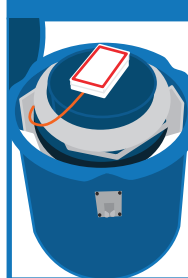
Replace the lid and let the Dry Shipper stabilize, undisturbed, overnight.

STEP 7



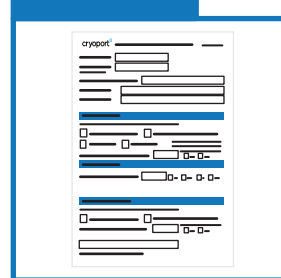
Pour off any excess liquid nitrogen by first removing the dewar from the enclosure - ensure to detach the carabiner. Then remove the dewar lid and tip the open end of the dry shipper toward the ground for two seconds.

STEP 8



Replace the lid, place dewar back into enclosure, and retach the carabiner. When ready, load samples.

STEP 9



Complete the In Field Recharging form and send it to cs@cryoport.com

IF THE DRY SHIPPER DOES NOT EMIT VAPOR WHEN PLUG IS REMOVED
PLEASE CONTACT CUSTOMER SERVICE IMMEDIATELY, BY CALLING (949) 470-2305 OR EMAIL CS@CRYOPORT.COM

24-hour Help Line
(949) 470-2305

Cryoport, Inc. • 17305 Daimler St. • Irvine, CA 92614
Phone: 1-949-470-2300 | Fax: 1-949-470-2306
www.cryoport.com • e-mail contact: cs@cryoport.com