

## HIGH VOLUME SHIPMENT: LOADING

### SECTION A

### RECEIVING SHIPPER

#### STEP 1

#### UNLATCHING INSTRUCTIONS

UNLATCH THE ENCLOSURE PER INSTRUCTION 9356,  
HOW TO UNLATCH & LATCH HIGH VOLUME ENCLOSURES

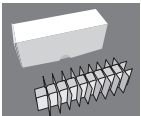
### SECTION B

### PACKING THE SPECIMEN

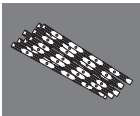
**IMPORTANT NOTE:** Commodity and accessories must be pre-conditioned prior to loading into the sample chamber. A **20% reduction of holding time** can occur if the materials are not preconditioned prior to loading into the shipper.

#### STEP 1

#### LOADING SAMPLES TO BE SHIPPED INTO EITHER:



ACC-9043

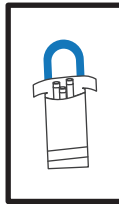
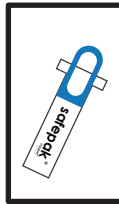


ACC-9033

**Cryovial Box**  
Holds 30 (2ml) vials.

**Canes**  
Holds 5 (2ml) vials.

ACC-9139



ACC-9140

**Safepak®** Holds 15 canes or 2 (5 1/2" x 2" x 2") boxes. 7 bags can be loaded into the dewar.

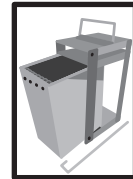
**Safepak®XL**  
Holds multiple payloads.

**Cryostrap®**  
Use alone or with the Safepak®XL to secure blood cassettes and cryovial boxes.

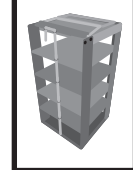


ACC-9141

ACC-9122



**Cassette Rack**  
Holds 9 (9.5" x 6" x 0.5") cassettes.



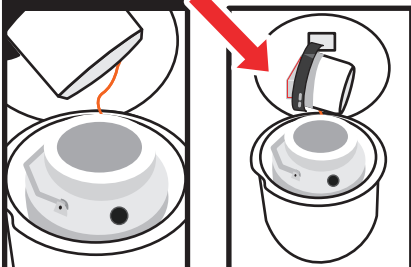
**Box Rack**  
Holds 5 (5 3/8" x 2 1/4" x 2 (5 1/2" x 2" x 2") boxes.

ACC-8905

### SECTION C

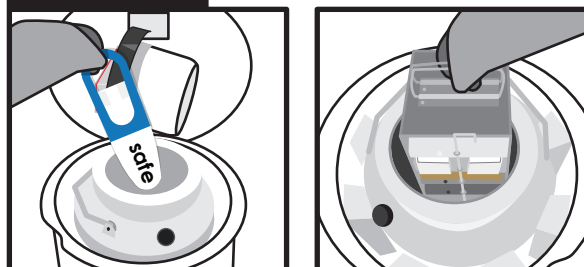
### LOADING SAMPLES FOR SHIPMENT

#### STEP 1



Once the specimen is packaged, remove the lid and rest it sideways behind the dewar and against the blue enclosure lid.

#### STEP 2



Lower the packaged commodity into the dewar with gloved hands.

#### STEP 3



If your commodity is loaded in a rack, ensure the handles are laying flat against the top.

**IF THE DRY SHIPPER DOES NOT EMIT VAPOR WHEN PLUG IS REMOVED**  
PLEASE CONTACT CUSTOMER SERVICE IMMEDIATELY, BY CALLING (949) 470-2305 OR EMAIL CS@CRYOPORT.COM

