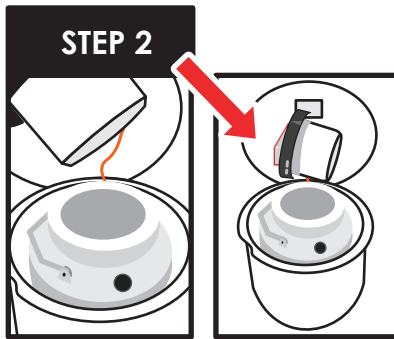


**HIGH VOLUME DRY SHIPPER:**

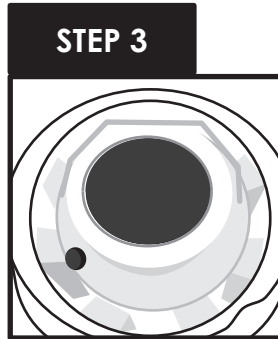
**PERSONAL PROTECTIVE EQUIPMENT: CRYOGENIC GLOVES, SAFETY GOGGLES**

**STEP 1 UNLATCHING INSTRUCTIONS**

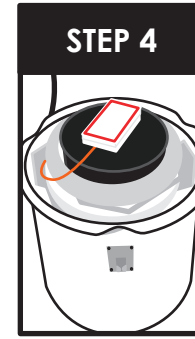
**UNLATCH THE ENCLOSURE PER INSTRUCTION 9356,  
HOW TO UNLATCH & LATCH HIGH VOLUME ENCLOSURES**



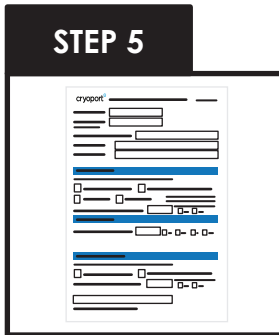
Remove the lid and rest it sideways behind the dewar and against the enclosure lid.



Cryoport recommends the commodity is loaded in a Safepak®XL as the bag is capable to withstand LN2. **DO NOT REMOVE THE COMMODITY AT ANY TIME.** Slowly pour Liquid Nitrogen into the opening. Cryoport Customer Service will provide information on the amount of LN2 to use for your specific use case.



Replace the lid and let the Dry Shipper stabilize, undisturbed, for at least 30 minutes, Before handing it over to carrier.



Complete the In Field Recharging form and send it to [cs@cryoport.com](mailto:cs@cryoport.com)

**IF THE DRY SHIPPER DOES NOT EMIT VAPOR WHEN PLUG IS REMOVED**  
PLEASE CONTACT CUSTOMER SERVICE IMMEDIATELY, BY CALLING (949) 470-2305 OR EMAIL [CS@CRYOPORT.COM](mailto:CS@CRYOPORT.COM)

**24-hour Help Line  
(949) 470-2305**

Cryoport, Inc. • 17305 Daimler St. • Irvine, CA 92614  
Phone: 1-949-470-2300 | Fax: 1-949-470-2306  
[www.cryoport.com](http://www.cryoport.com) • e-mail contact: [cs@cryoport.com](mailto:cs@cryoport.com)