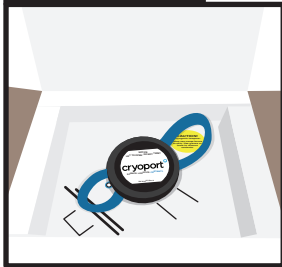


EXP6 STANDARD SHIPMENT

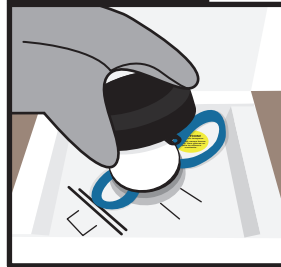
PERSONAL PROTECTIVE EQUIPMENT: CRYOGENIC GLOVES, SAFETY GOGGLES

STEP 1



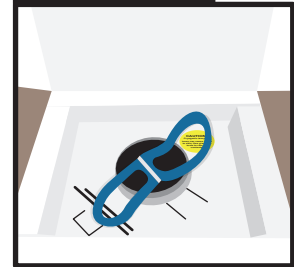
After opening the loaded shipment, ensure the blue Safepak® straps stay outside the opening of the dewar at all times.

STEP 2



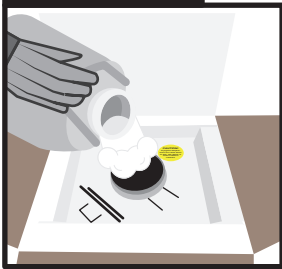
Wearing safety goggles and cryogenic gloves, pull gently upward to remove the shipper vapor plug.

STEP 3



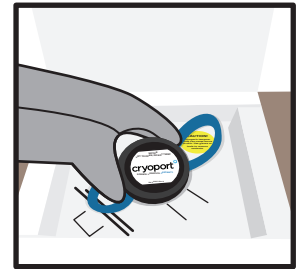
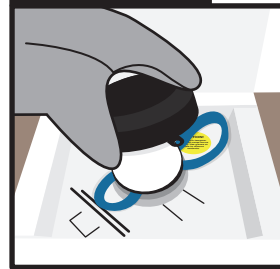
Cryoport recommends the commodity is loaded in a Safepak® as the bag is capable to withstand LN2. **DO NOT REMOVE THE COMMODITY AT ANY TIME.**

STEP 4



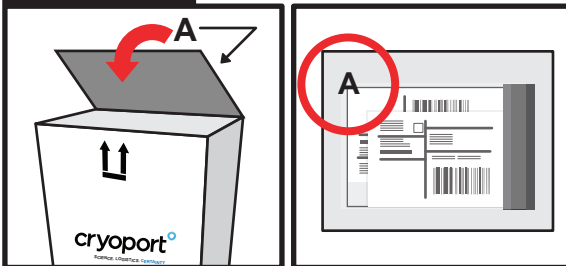
- The amount of LN2 to add to the shipper is provided by Cryoport Customer Service.
- Slowly pour LN2 into the shipper and avoid spilling on the data logger.
- The LN2 should absorb into the shipper and excess LN2 should not be visible.

STEP 5



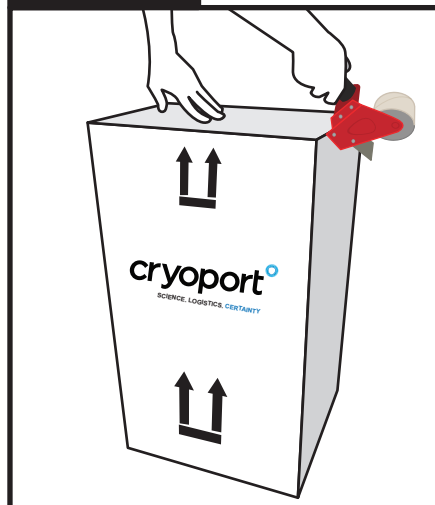
Once the LN2 has been replenished, replace the shipper vapor plug by aligning the slot with the thermocouple wire and gently push the plug into position.

STEP 6



- Close flaps making sure to have flap "A" showing on the outside of the white carton.
- For International shipments: REMOVE AND SIGN ALL FOUR (4) COPIES OF COMMERCIAL INVOICES.
- Place all four (4) signed copies of Commercial Invoices back inside shipping envelope on Flap "A" behind Air Waybill.

STEP 7



Seal top of white carton with packaging tape making sure to have flap "A" showing on the outside of the white carton.