

CRYOPORT'S CERTIFIED & COOL 2 - 8°C SOLUTION



CRYOPORT. CERTIFIED. COOL.™

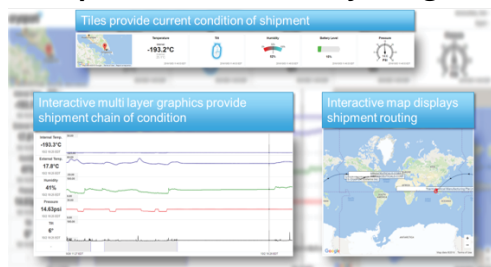
For valuable materials that need to be kept at 2-8°C, Cryoport's Certified & Cool C3™ solution is the most advanced shipper on the market. The validated C3™ 2 - 8 °C shipper integrates Cryoport's trusted and world-renowned cold chain logistics solution, which is comprised of the SmartpakII™ Condition Monitoring System, Cryoport™ Logistics Management Platform and 24/7/365 customer support. The industry-leading SmartpakII™ and powerful Cryoport™ work in conjunction to provide visibility of the location and the key aspects of your critical shipment. Cryoport's unparalleled technology and round-the-clock customer support allows for risk mitigation, proactive monitoring and intervention capabilities. The shipper's integrated packaging and technology paired with our cold chain logistics expertise and 24/7/365 customer support truly make Cryoport's C3™ solution the most reliable and groundbreaking 2 - 8°C shipper in the industry.

SPECIFICATIONS:

Temperature Range:	2°C - 8°C
Volume:	12 L / 729 ci
Duration:	96 hours
Tare Weight:	22 lb / 9.98 kg
Payload Size Imperial:	8.9 x 8.9 x 8.9 in
	226 x 226 x 226 mm
Outer Dimension:	15 x 13.5 x 13.75 in
	381 x 343 x 350 mm



SmartpakII™ is seamlessly integrated inside the C3™ box



SmartpakII™ Monitors:
location, temperature,
shock, orientation, pressure,
humidity, anti-tamper,
battery life

KEY FEATURES:

Packaging

- New and recyclable outer packaging for every shipment to provide a clean and consistent appearance
- Simple pack-out with unique flap design for easy labeling identification
- Stationary temperature probe to maintain consistent location for measurement
- Phase change panels surround the payload providing greater temperature performance and overall payload protection
- C3™ shippers consist of durable components that meet ISTA 3A transit criteria

Informatics

- The Cryoport cold chain logistics solution, comprised of the SmartpakII™ and Cryoport™ provide unsurpassed analytics for planning, enroute mitigation and reporting
- Cryoport™ Logistics Management Platform streamlines ordering, tracking, paperwork and communications through a single web-based portal
- Complete shipping record history available in 21 CFR 21 Part 11 compliant database

Logistics

- Cryoport's unparalleled expertise in cold chain logistics solutions and our exclusive focus on medical transport
- 24/7/365 customer service support to track your shipment and mitigate risk with automated escalation
- Flexibility on freight carrier options
- Carrier optimization and route planning aimed at balancing risk and performance cost
- Cryoport provides complete chain of custody and chain of condition with every shipment

cryoport^o

SCIENCE. LOGISTICS. CERTAINTY.

U.S. • Netherlands • Singapore
info@cryoport.com | +1 949.232.1900 | cryoport.com

WHY CHOOSE CRYOPORT FOR YOUR COLD CHAIN LOGISTICS



End-to-End Solutions

From point of origin to destination, Cryoport provides easy storage, ordering, fulfillment, shipping, continuous tracking and monitoring, documentation assistance and 24/7 customer support for your cold chain logistics needs.



Intelligent Logistics

Integrated global storage, monitoring and shipping made simple. Monitoring and shipping temperature-sensitive materials around the world has never been easier.



Complete Compliance

No matter what you're shipping or where it's going, have confidence that your materials are being stored and shipped ethically and in full compliance with all applicable regulations. Cryoport's team of experts will guide you through customs and can manage all documentation.



Steadfast Protection

Navigate global cold chain logistics with Cryoport Express® liquid nitrogen dry vapor shippers, which maintain -150°C for up to 10 days. Ship your critical materials confidently now with Cryoport's Certified and Cool C3™ 2-8°C solution with a validated 96-hour hold time.



Nonstop Monitoring

Complete visibility with the Cryoport™ logistics management system and SmartPak II™ condition monitoring system. Never lose sight of your sample or shipment with round-the-clock support and access to accurate and up-to-the-minute data in a single data stream.



Risk Mitigation

Your choice of a logistics partner impacts your materials, your data, your operations and, most importantly, your outcome. Our solutions are built to maintain the integrity of your materials and data throughout transit with fully validated Cryoport Express® dry vapor shippers and a team of experts who proactively monitor, support and find solutions for any potential challenges.

When there's no room for error,
TRUST CRYOPORT

ABOUT CRYOPORT

Cryoport is the premier provider of cold chain logistics solutions to the life sciences industry through our purpose-built proprietary packaging, information technology and specialized cold chain logistics expertise. We provide industry-leading shipping and storage logistics solutions for biologic materials, such as immunotherapies, stem cells, CAR T-cells and reproductive cells, for biopharmaceutical, IVF and animal health organizations around the world.