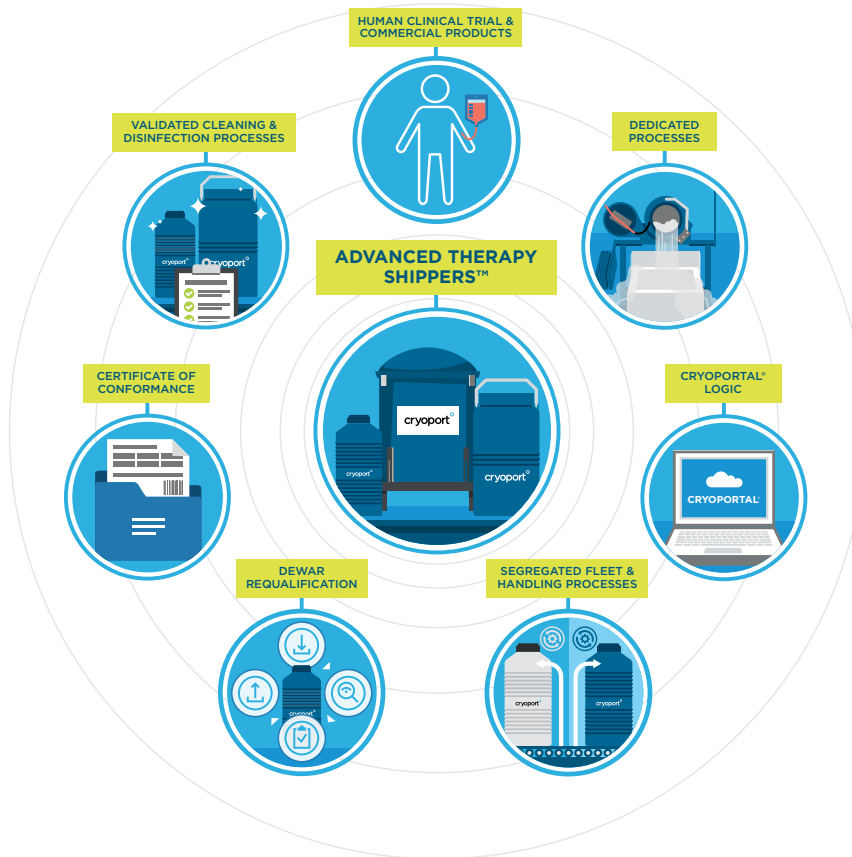


TRACK YOUR FRAGILE ADVANCED THERAPIES WITH OUR CRYOPORT® LOGISTICS MANAGEMENT PLATFORM

As part of our Chain of Compliance™ solution, our ATS shippers integrate into our Cryoport® Logistics Management Platform, which offers complete transparency and unmatched traceability of all equipment, components, and commodities including historical use, performance, handling, cleaning, and disinfection of the equipment.



Advanced Therapy Shipper™ Product Line:

A first-of-its-kind fleet dedicated exclusively to both clinical and commercial advanced therapy supply chain management

Human Clinical Trial & Commercial Products:

The only materials our brand new, shipping fleet safeguards and transports to patients in need

Dedicated Processes:

Specific methods and instructions that ensure all shipper components and materials maintain defined standards to ensure protection from cross-contamination

Cryoport® Logic:

Logic implemented via the Cryoport® Logistics Management Platform that ensures blue shippers are used exclusively for human advanced therapies

Segregated Fleet & Handling Processes:

A specialized set of logistic operations that ensures ATS shippers are free of cross-contamination by handling them separately from other fleets

Dewar Requalification:

A series of procedures that each ATS shipper goes through — including physical suitability, cleanliness, LN2 capacity, and minimum required hold times— before being shipped to its next destination

Certificate of Conformance:

A guarantee that each shipper is dedicated to advanced cell and gene therapy supply chain management and is certified as human use only throughout its life

Validated Cleaning & Disinfection Processes:

Sanitation procedures that virtually eliminate the potential risk of cross-contamination of materials and reduce external contaminants by 99.9999%