

# CRYOPORTAL® LOGISTICS MANAGEMENT PLATFORM

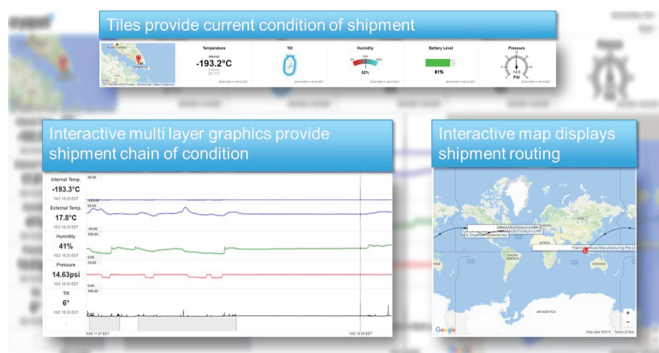


## COMPLETE TRANSPARENCY AND TRACEABILITY

The Cryoport® is Cryoport's custom-built logistics management platform that provides 24/7/365 access, visibility and traceability to the entire temperature-controlled process from order placement, location and condition during shipment, to return and requalification of each shipper.

The power of the Cryoport® condenses inventory, ordering, tracking, documents and reporting into a single interface. The industry-leading portal consolidates all logistics, condition monitoring and equipment qualification data for every shipment, and simplifies shipping to streamline communication between Cryoport and our clients, integrated partners, and for internal purposes.

### *Smartpak II® Condition Monitoring Data via Live View*



### *GPS, WiFi & Cellular Technologies*

Cryoport's Cryoport® works in conjunction with our Smartpak II® Condition Monitoring System to provide near real-time information reporting about shipments. Using GPS, WiFi and Cellular technologies, the Smartpak II® allows Cryoport and clients access to view internal temperature, external temperature, orientation/tilt, location, geofencing, humidity, light, pressure and shock.

The Smartpak II® first initiates connection to GPS in order to provide the geolocation of the shipment. If the device cannot connect to GPS, WiFi and Cellular Triangulation are then implemented as backups to provide the location information.

## MODULES

### *Dashboard*

Information management tool that visually tracks, analyzes and displays key performance indicators (KPI), metrics and key data points related to shipments at a glance.

### *Reports*

Generic reports are pulled directly from the web interface. Custom reporting is available upon requests and utilizes SQL access through a gatekeeper user.

### *Cryoport*

The Cryoport functionality includes detailed information on all Cryoport facilities, client staging centers, storage locations, shipping providers, shipping accounts, pricing, inventory, notification tag numbers, Nitrogen Evaporation Rate (NER) history, shipper models and associated information.

Documentation details such as declarations, harmonized codes, document types, commodity groups, and commodity routes are also included.

### *Client Management*

Client Management stores all client information including sites, users, contacts, commodities shipped, declarations, brokers, quotes, order history, pricing, process controls, routes, available shippers and special instructions.

### *Quotes*

Quotes displays all pending, accepted and expired quotes.

### *Orders*

Client orders to be entered manually from a template or from an automated entry of an event, are located under Orders, as well as details on all order templates, standing orders and order history.

This section displays detailed information on order status, future shipments, approved orders, dewar charging, order processing, in transit shipments, received shipments, clean dewars, weighed dewars, shipments with exceptions, and shipments with return leg exceptions.

## EXTERNAL CLIENT FEATURES

### **Account Information**

Account details, users, user roles, sites, contacts, commodities shipped, freight and broker accounts, customer required SOPs.

### **Orders**

Place orders, order templates, order numbers, order schedule, order status, active shipment details, exceptions, notifications, client uploadable documents, order history.

### **Shipments**

Shipment tracking, customs documentation, exception notices, customizable alerts, automated email notifications

### **Integration**

The Cryoport® is integrated with the Smartpak II® condition monitoring system to provide near real-time information while tracking the most important attributes that impact shipments.

Application Programming Interface (API) integration is available to connect to other software order systems for automated order entry, and visibility of data logger information.

### **Cryoport® Reports**

Shipper Certification Reports and Data Logger Reports are accessories generated from the Cryoport®.

The Shipper Certification Report provides details specific to each shipment including order information, shipper and accessory serial numbers, shipper statistics, shipper preparation, and SmartPak II® information.

The Data Logger Report documents internal and external temperature during transport.

The Shipper Certification and Data Logger Reports are available to clients for their records, trial files, and QA purposes

### **Custom Reports**

Clients have the ability to pull and export reports based on their historical orders. Reports can include items such as destination and origin facilities, order submission dates, order ship dates and more.

### **Informatics**

The Cryoport® captures and stores all data from the Smartpak II® condition monitoring system to provide significant analytics related to lane and equipment performance, freight costs, and historical dewar performance in a single consolidated data stream.

## INTERNAL CRYOPORT FEATURES

### **Account Information**

Account address, contacts, users, quotes, order templates, order history, pricing, process controls.

### **Quotes**

Quote creation, quote tracking, expired quotes.

### **Orders**

Order tracking, order status, order history, exception tracking, automated order entry.

### **Client Management**

Custom client reports, account information, users, contacts, ability to manage client-owned fleets, client-specific dedicated fleets

### **Shipments**

Shipment tracking, shipping plan intelligence, customs documentation, exception notices, customizable alerts.

### **Reporting**

*Operations* - Shipper forecasting, shipper inventory, dewar inventory, dewar forecasting, dewar weights, dewar hold-time tracking, late/lost dewar management, accessory inventory, automated quality checks, calibration tracking, fleet management

*Finance* - Client orders, order trends, invoiced orders, shipper disposition.

*Business Development* - Client reports, order templates, quotes, order history, client lists, sales metrics, pricing, process control reports.

*Client* - Active shipper inventory, customs documentation, exception notices, customizable alerts, Smartpak II® condition monitoring data.

### **Integration**

The Cryoport® is integrated with the Smartpak II® condition monitoring system to provide near real-time information while tracking the most important attributes that impact shipments.

Integration with FedEx, UPS and DHL receive instant freight costs, scan codes, airway bills all in one place.

When there's no room for error,  
**TRUST CRYOPORT**



SCIENCE. LOGISTICS. CERTAINTY.

U.S. • The Netherlands • Singapore

info@cryoport.com | +1 949.232.1900 | cryoport.com