

A Curated Collection by Flokk & Kvadrat

With the Flokk range of design furniture in mind, we have carefully selected textiles and colours – each with distinct features and expression.

The selection presented here are chosen to mix & match accordingly on a wide range of Flokk products.

The extent of Kvadrat's product range reflects the diverse skills and knowledge of its designers – who come from the worlds of textile, product, fashion design, architecture and art.

Atlas designed by Margrethe Odgaard

Woollen upholstery textile Atlas particularly stands out for its new melange look and meticulously nuanced colour blends. Margrethe Odgaard has achieved this with a construction that unites two different coloured yarns – each of which combines two colours – in the warp and the weft. Atlas offers exceptional colour intensity and intricate colour details.

Melange Nap designed by Akira Minagawa

Melange Nap is a woollen upholstery textile characterised by exceptional depth of colour and surprising details. It offers a distinctively unique melange expression. Extremely soft yet durable, Melange Nap appears to be brushed. It is constructed with a unicoloured and a melange yarn, which creates a graphic pattern of tiny dots that play across its surface.

Re-wool designed by Margrethe Odgaard

Crafted using 45% recycled wool, Re-wool is a rich upholstery textile with a sustainable profile. The textile is partly made by reusing scraps from Kvadrat's yarn spinners in the UK. Reminiscent of colourful stitchings on a darker background, Re-wool features exceptional depth of colour, creating a dynamic play on the textile's surface when applied to furniture.

San designed by Louise Sigvardt

San is a sporty woollen upholstery textile, which plays with contrasts, irregularities and depth. It clings to the curves and edges of furniture particularly well due to its excellent stretchability. Constructed from two unicoloured yarns, San offers a scale of intriguing colour expressions. These range from tone-on-tone melange to graphic combinations of contrasting hues.

Twill Weave designed by Jonathan Olivares

Twill Weave brings a contemporary interpretation to the classic woollen twill upholstery textile. Each colourway for Twill Weave unites two tone-in-tone colours, which accurately reflect the actual colours of minerals, metals and ceramics from Harvard University's extensive Materials Collection.

Atlas

Designed by Margrethe Odgaard

Application Offices, hotels, institutions, domestic use. Great durability.
Description 90% new wool, worsted, 10% nylon. Width app. 55 inches (140 cm). Weight app. 400 g/lin.m. Yarn dyed. Colour differences may occur.

Selvedge ⇅

Abrasion: App. 100,000 rubs acc. to the Martindale method. EN ISO 12947.
Lightfastness (ISO) 6-7. Pilling (EN ISO) 4-5. Fastness to rubbing (ISO) dry 4-5, wet 4-5. Flame resistance: BS 5852 Crib 5 with treatment. BS 5852 ignition source 3. BS 5852 part 1. EN 1021-1/2. IMO FTP Code 2010:Part 8. NF D 60 013. UNI 9175 11M. US Cal. Bull. 117-2013. ÖNORM B1 / Q1. (Copy of test report available).

Care Please see the ISO symbols.



Melange Nap

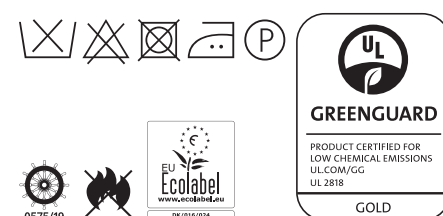
Designed by Akira Minagawa

Application Offices, hotels, institutions, domestic use. Great durability.
Description 97% new wool, worsted, 3% nylon. Width app. 55 inches (140 cm). Weight app. 440 g/lin.m. Material dyed. Colour differences may occur.

Selvedge ⇅

Abrasion: App. 60,000 rubs acc. to the Martindale method EN ISO 12947.
Lightfastness (ISO) 6. Pilling (EN ISO) 3-4. Fastness to rubbing (ISO) dry 4-5, wet 4-5. Flame resistance: AS/NZS 3837 Class 2. BS 5852 Crib 5 with treatment. BS 5852 ignition source 3. BS 5852 Part 1. EN 1021-1/2. IMO FTP Code 2010:Part 8. NF D 60 013. UNI 9175 11M. US Cal. Bull. 117-2013. (Copy of test report available).

Care Please see the ISO symbols.



Re-wool

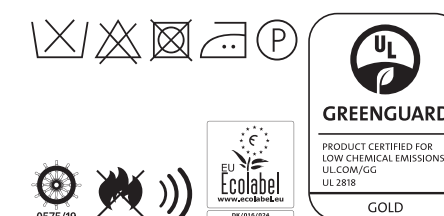
Designed by Margrethe Odgaard

Application Offices, hotels, institutions, domestic use. Great durability.
Description 45% recycled wool, 45% new wool, worsted, 10% nylon. Width app. 55 inches (140 cm). Weight app. 540 g/lin.m. Yarn dyed. Colour differences will occur.

Selvedge ↔

Abrasion: App. 50,000 rubs acc. to the Martindale method EN ISO 12947.
Lightfastness (ISO) 5-7. Pilling (EN ISO) 4. Fastness to rubbing (ISO) dry 4-5, wet 4-5. Flame resistance: AS/NZS 1530.3. BS 5852 Crib 5 with treatment. BS 5852 ignition source 3. BS 5852 part 1. EN 1021-1/2. IMO FTP Code 2010:Part 8. NF D 60 013. UNI 9175 11M. US Cal. Bull. 117-2013. ÖNORM B1 / Q1. (Copy of test report available).

Care Please see the ISO symbols.



San

Designed by Louise Sigvardt

Application Offices, hotels, institutions, domestic use. Great durability.
Description 92% new wool, worsted, 8% nylon. Width app. 55 inches (140 cm). Weight app. 370 g/lin.m. Yarn dyed. Foreign fibres may occur in light colours. Colour differences may occur.

Selvedge ⇅

Abrasion: App. 60,000 rubs acc. to the Martindale method EN ISO 12947.
Lightfastness (ISO) 5-7. Pilling (EN ISO) 3-4. Fastness to rubbing (ISO) dry 4-5, wet 3-5. Flame resistance: AS/NZS 3837 Class 2. BS 5852 Crib 5 with treatment. BS 5852 part 1. EN 1021-1/2. IMO FTP Code 2010:Part 8. NF D 60 013. SN 198 898 5.3 with treatment. UNI 9175 11M. US Cal. Bull. 117-2013. (Copy of test report available).

Care Please see the ISO symbols.



Twill Weave

Designed by Jonathan Olivares

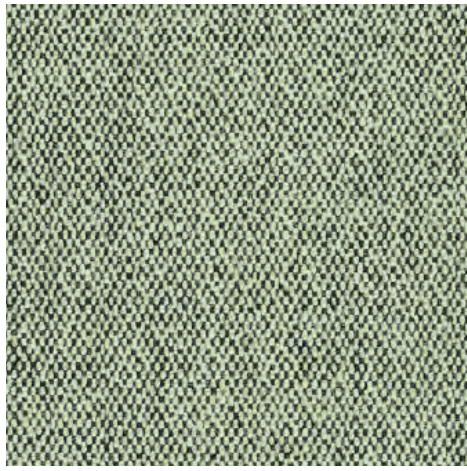
Application Offices, hotels, institutions, domestic use. Great durability.
Description 90% new wool, worsted, 10% nylon. Width app. 55 inches (140 cm). Weight app. 960 g/lin.m. Yarn dyed. Colour differences may occur.

Selvedge ⇅

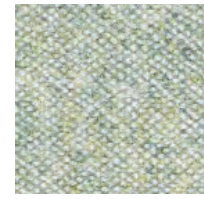
Abrasion: App. 60,000 rubs acc. to the Martindale method EN ISO 12947.
Lightfastness (ISO) 5-7. Pilling (EN ISO) 3-4. Fastness to rubbing (ISO) dry 4-5, wet 4-5. Flame resistance: AS/NZS 1530.3. BS 5852 Crib 5 with treatment. BS 5852 ignition source 3. BS 5852 Part 1. EN 1021-1/2. IMO FTP Code 2010:Part 8. NF D 60 013. SN 198 898 5.3 with treatment. UNI 9175 11M. US Cal. Bull. 117-2013. (Copy of test report available).

Care Please see the ISO symbols.

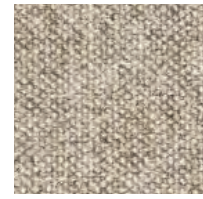




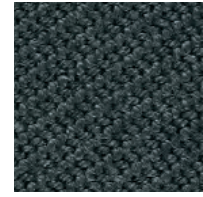
San 950



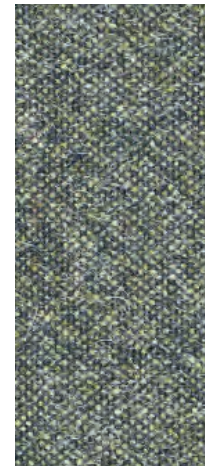
Melange Nap 911



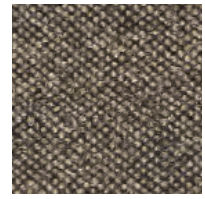
Melange Nap 211



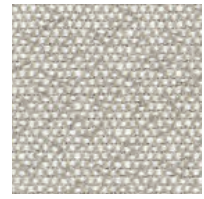
Twill Weave 990



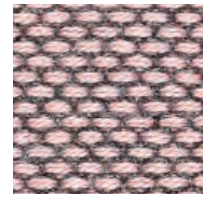
Melange Nap 951



Melange Nap 371



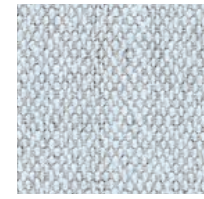
San 230



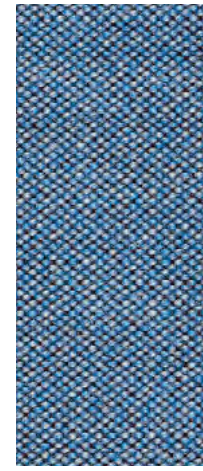
Re-wool 648



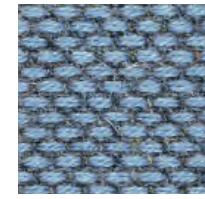
Melange Nap 241



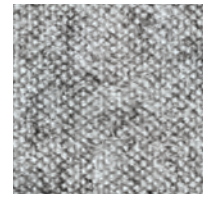
San 730



Atlas 731



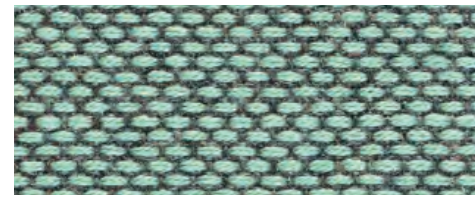
Re-wool 768



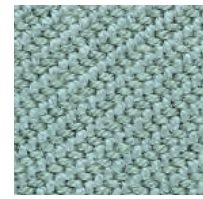
Melange Nap 111



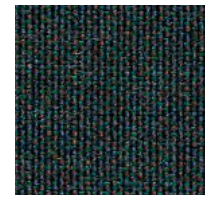
Atlas 911



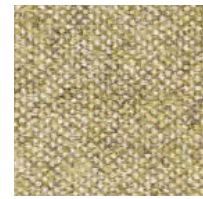
Re-wool 858



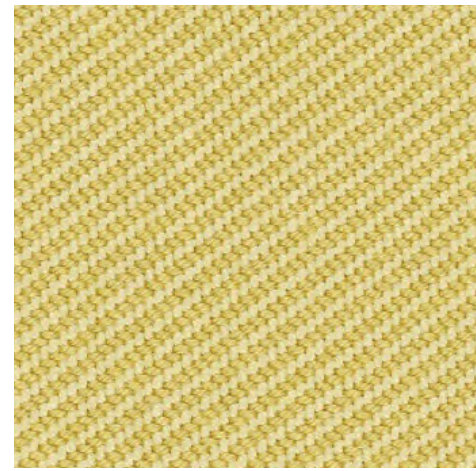
Twill Weave 940



Atlas 981



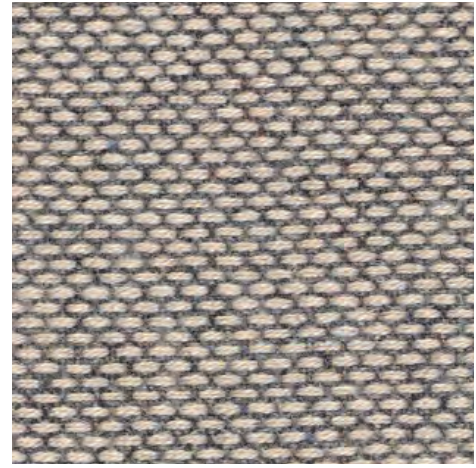
Melange Nap 411



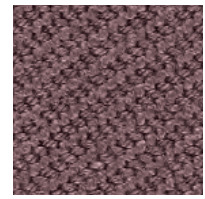
Twill Weave 430



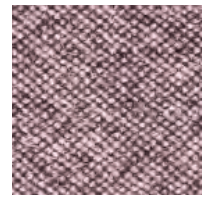
Re-wool 568



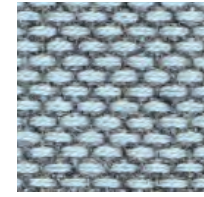
Re-wool 628



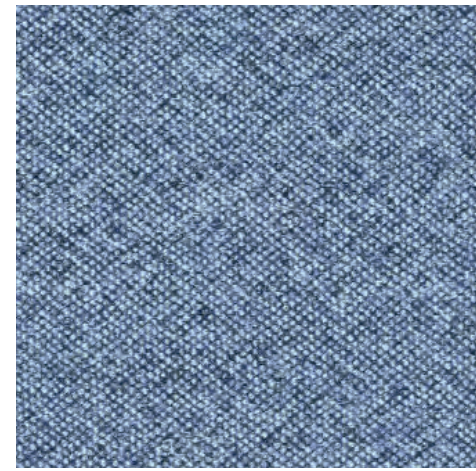
Twill Weave 280



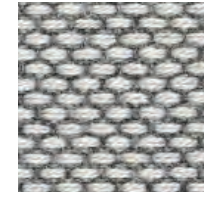
Melange Nap 651



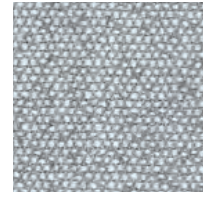
Re-wool 718



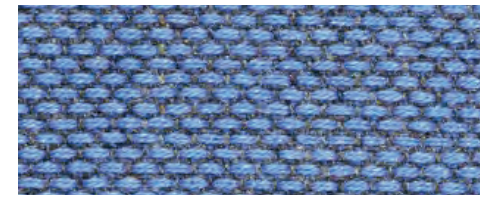
Melange Nap 751



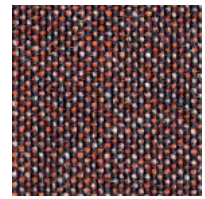
Re-wool 128



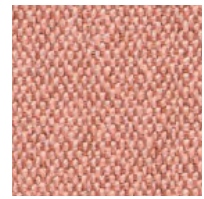
San 130



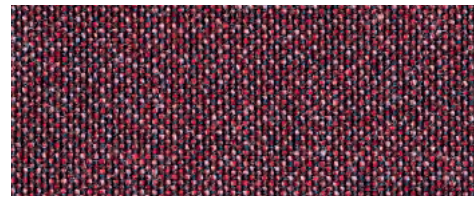
Re-wool 758



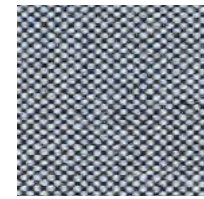
Atlas 571



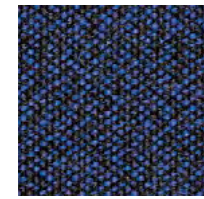
San 540



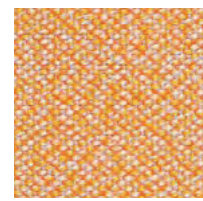
Atlas 671



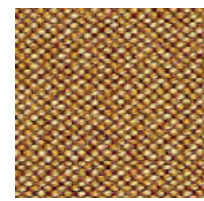
Atlas 131



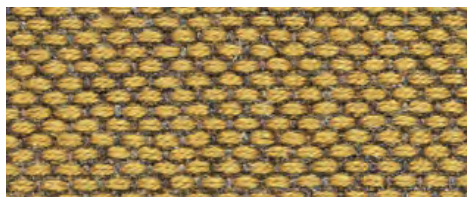
Atlas 781



Atlas 531



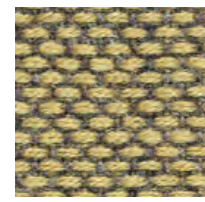
Atlas 461



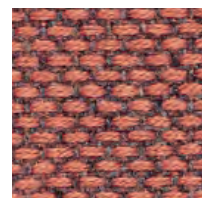
Re-wool 448



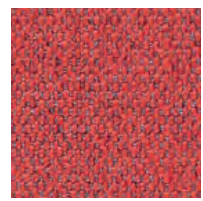
San 220



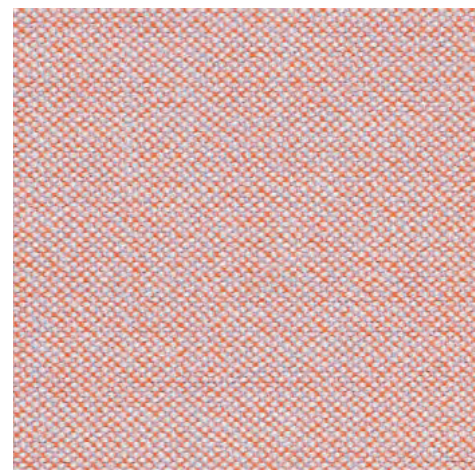
Re-wool 458



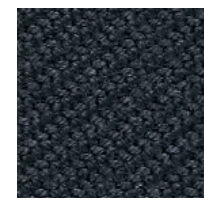
Re-wool 558



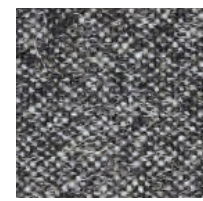
San 570



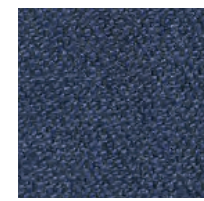
Atlas 501



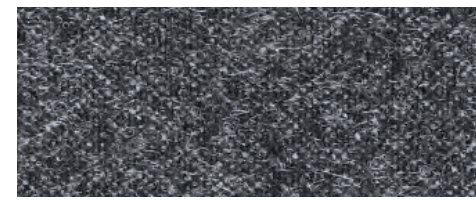
Twill Weave 190



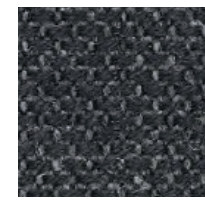
Melange Nap 171



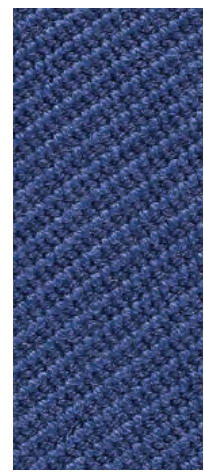
San 790



Melange Nap 191



Re-wool 198



Twill Weave 780