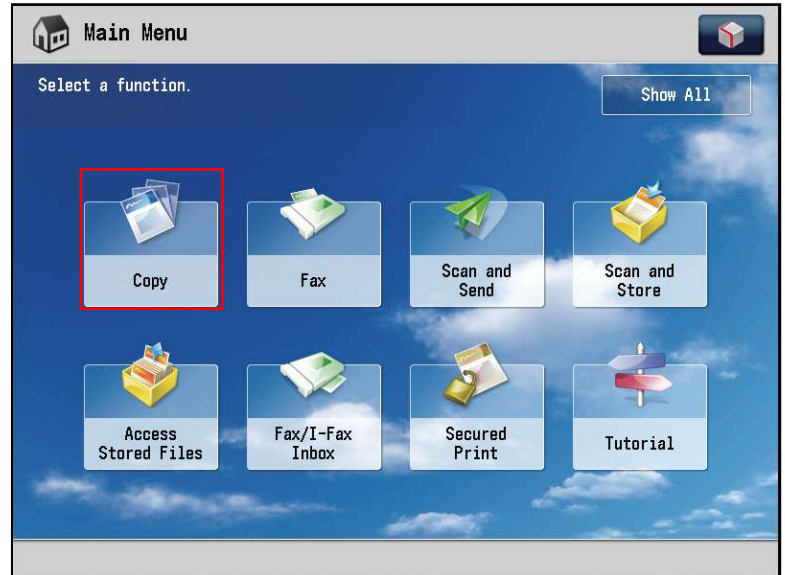
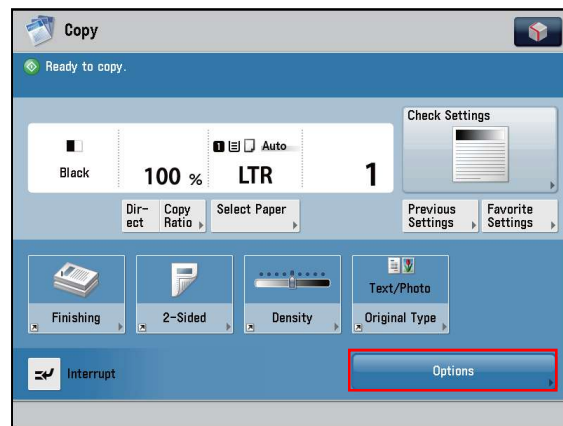


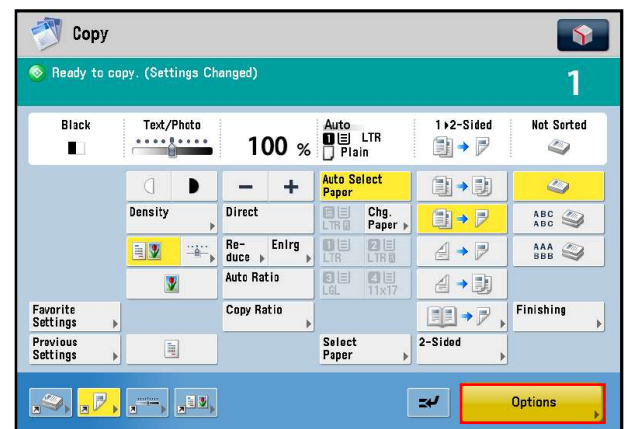
1. Adjust the slide guides to fit the size of your originals. Neatly place your originals with the side to be copied face up or place originals on the platen glass
2. Touch **Copy** from the Main Menu screen



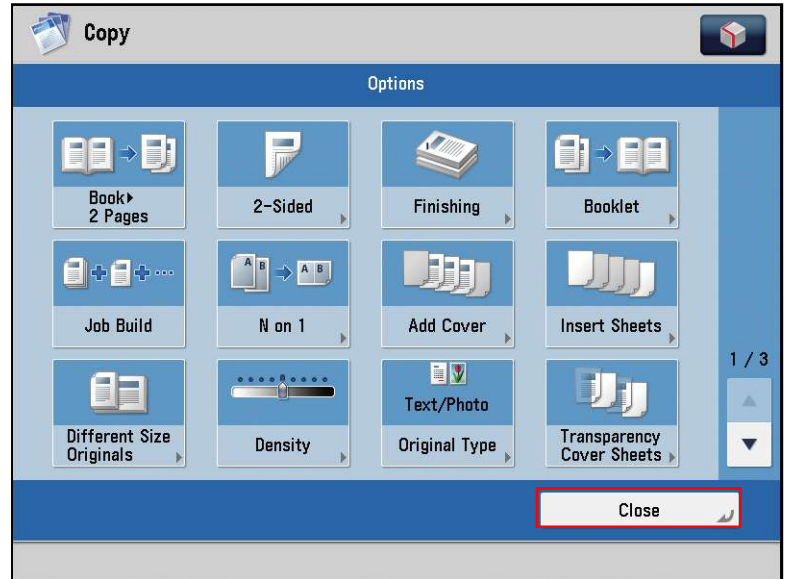
3. Copy Basic Features Screen **or** Express Copy is displayed
4. Touch **Options**



or



5. Select copying functions needed
6. Touch **Close**



7. Press the numeric keys to enter the desired copy quantity



8. Press **Start**

