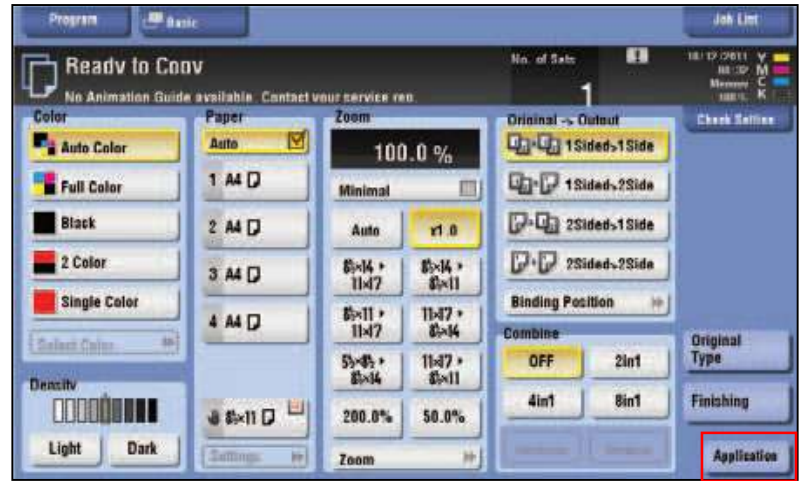


1. Lift the **Cover** and place card in the upper left corner of the platen glass SEF (Short Edge First)
2. Touch **Application** tab



3. Scroll (**right**) or press J Icon to locate Card Shot
4. Touch **Card Shot**



5. Turn **ON Card Shot** Function
6. Enter the **X** and **Y** values now using (- & +)
7. Touch any Size button to lock in your value
8. Touch **OK**
9. Press **Start** to scan the front side
10. When prompted, flip card over to back side and place card back in the upper left corner of the platen glass
11. Press **Start**
12. When prompted, touch **Finish** and press **Start**

