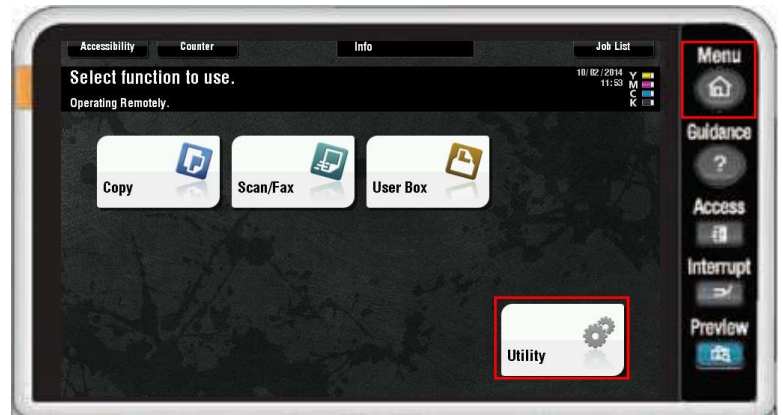
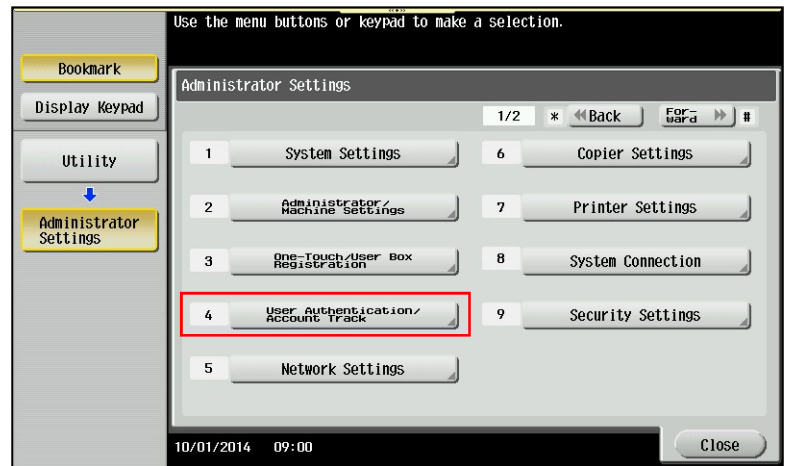


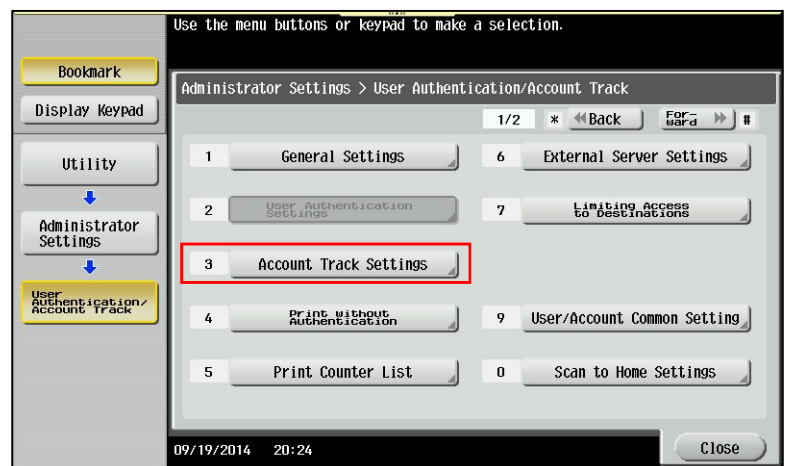
1. Touch **Menu** key (upper right of the panel)
2. Touch the **Utility** icon
3. Touch **Administrator Settings**
4. Enter **Password** (default is **12345678**) and touch **OK**



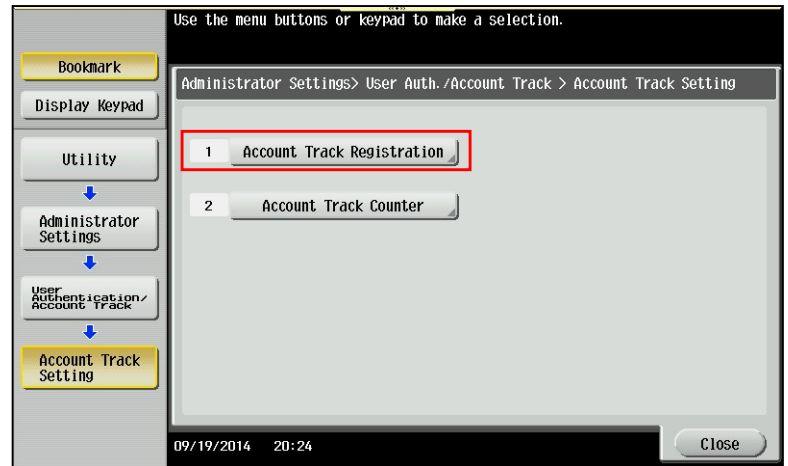
5. Touch **User Authentication/Account Track**



6. Touch **Account Track Settings**

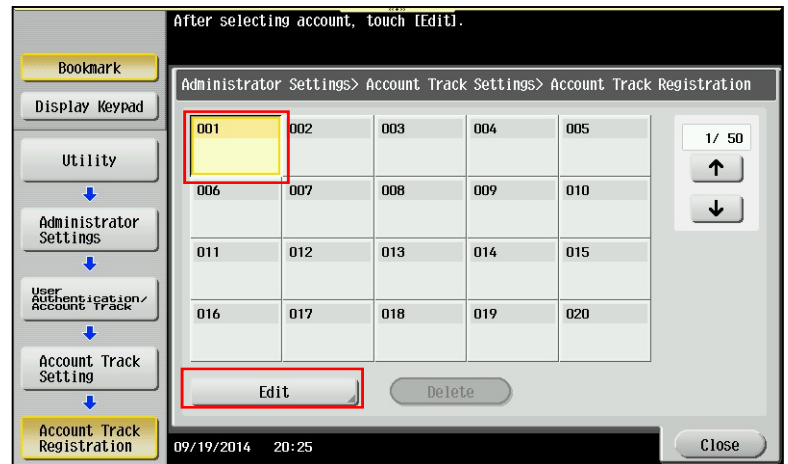


7. Touch **Account Track Registration**

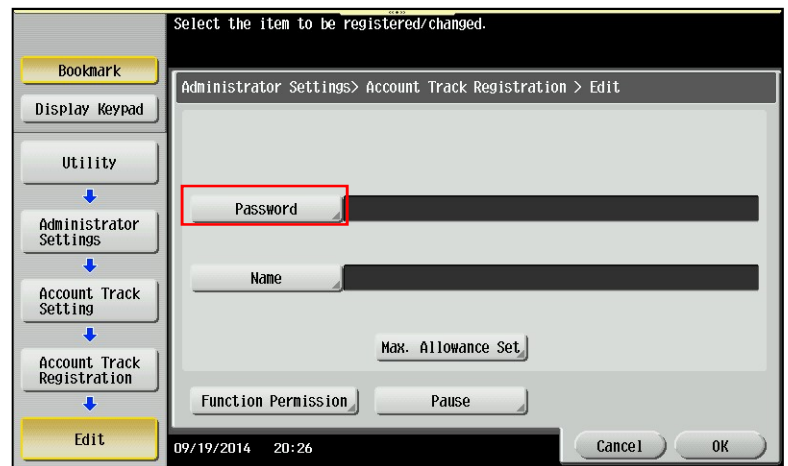


8. Select available Registration Key 001-1000.
Select **001** (pick a different registration key if this one is not available)

9. Touch **Edit**



10. Touch **Password**



11. Touch **Password**
12. Enter the account code
13. Touch **Password Confirmation**
14. Re-enter the account code
15. Touch **OK**

Use the keyboard to enter the password.
For confirmation, the password must be entered twice.
Press the [C] key to clear your entry.

Administrator Settings > Edit > Password

Password: [masked] [C]

Password Confirmation: [masked] [C]

← → Delete

1 2 3 4 5 6 7 8 9 0 - = \

q w e r t y u i o p [] \

a s d f g h j k l ; ' ,

z x c v b n m . /

Space Shift

09/19/2014 20:26 AA Enlarge ON Cancel OK

16. Touch **Name**

Select the item to be registered/changed.

Bookmark

Display Keypad

Utility

↓

Administrator Settings

↓

Account Track Setting

↓

Account Track Registration

↓

Edit

Administrator Settings > Account Track Registration > Edit

Password: [masked]

Name: [masked]

Max. Allowance Set

Function Permission Pause

09/19/2014 20:26 Cancel OK

17. Enter the account name
18. Touch **OK**

Use the keyboard to enter the name.
Press the [C] key to clear your entry completely.

Administrator Settings > Edit > Name

Test [C]

← → Delete

1 2 3 4 5 6 7 8 9 0 - = \

q w e r t y u i o p [] \

a s d f g h j k l ; ' ,

z x c v b n m . /

Space Shift

09/19/2014 20:27 AA Enlarge ON Cancel OK

*NOTE: If you go into **Max. Allowance Set** or **Function Permission** you can limit the accounts access to features and/or quantities allowed*

19. Touch **OK**



20. Touch the next entry number and repeat steps 8-18 or touch **Close** to exit

