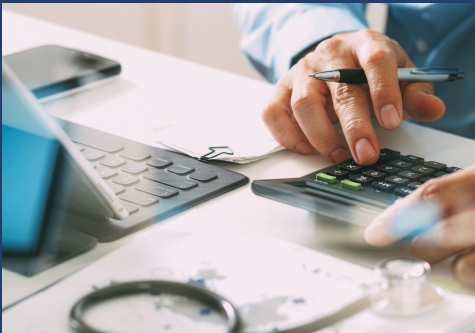


RVU Updater

FOR athenaPractice™



RVU Updater

Automatically update fee schedules with RVU values and applicable global periods

Track and validate Insurance payments to fee schedule allowed amounts.

Quatris Healthco's affordable and flexible RVU Updater tool will automatically update fee schedules with RVU values (derived from CMS) and applicable global periods based on year, GPCI, facility or non-facility (CMS file RVU20A).

With the QHCO RVU Updater, you can manage fee schedules and populate allowed amounts based on RVU and carrier conversion factor. This flexible tool has the federal register RVU values and can streamline your fee schedule creation process.

For the most up-to-date information regarding the Physician Fee Schedule final rule visit: <https://www.cms.gov/Medicare/Medicare-Fee-for-Service-Payment/PhysicianFeeSched>

Streamline your processes with our affordable RVU Updater.

