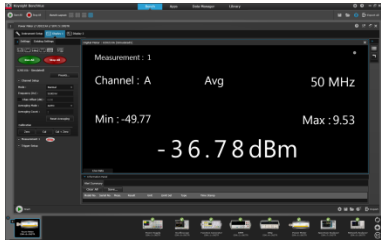


BenchVue Power Sensor App

Control your power sensor to data log and visualize measurements in a wide array of display options.



Supported functionality	Free app	Pro app
Module settings	<ul style="list-style-type: none"> - Preset select: DEM, GSM, WCDMA, WLAN, LTE, etc. - Instrument reset - Channel setup: Mode, offset, frequency - Trace setup: Units, scale configuration - Measurement setup: Units, offset, feed setup, alerts, recorder - Trigger setup: Mode, source, auto level, delay, slope type - Gate setup: Start, length - Calibration: Zero, calibration, calibration + zero - Corrections: FDO, Gamma, S-parameter 	
Measurement display options	<ul style="list-style-type: none"> - Digital meter view - Analog meter view - Data log view - Trace view with markers and gate - Multilist view - Alert summary 	
Measurement data log	<ul style="list-style-type: none"> - Data logging for 1 hours - Logger control 	- Unrestricted data logging
Export screen image	<ul style="list-style-type: none"> - Clipboard - File (PNG/JPEG/BMP) - E-mail 	
Export data	<ul style="list-style-type: none"> - Matlab - Microsoft Excel - Microsoft Word - CSV 	
Save and recall instrument state	Yes	Yes
Supported models		
U2021XA, U2022XA, U2041XA, U2042XA, U2043XA, U2044XA, U2049XA LAN, U2000A, U2001A, U2002A, U2004A, U2000B, U2001B, U2000H, U2001H, U2002H, U8481A, U8485A, U8487A, U8488A, N1911A, N1912A, N1913A, N1914A, N8262A		
Pro version capability		
Upgrading to the Pro version (Model # BV0007A) provides unrestricted data logging.		

Contact | www.ccontrols.ch

Computer Controls AG
 Industriestrasse 53
 CH – 8112 Otelfingen
 Phone +41 (0) 44 308 66 66
 E-Mail info@ccontrols.ch

Computer Controls SA
 Ch. Vieux-Moulin 33 | CP33
 CH – 1373 Chavornay
 Phone +41 (0) 24 423 82 00
 E-Mail romand@ccontrols.ch