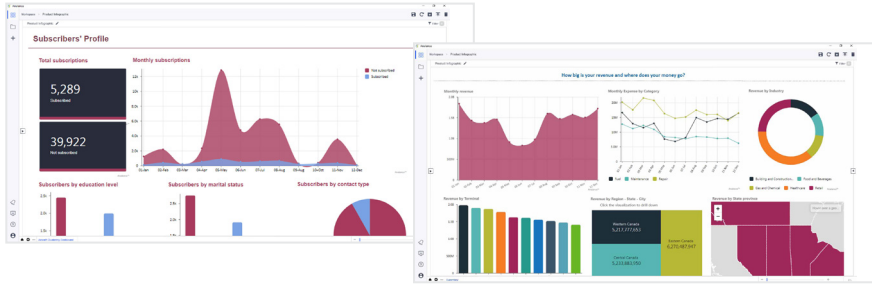


# ANALANCE ADVANCED ANALYTICS

**Analance Advanced Analytics (AAA)** parses large masses of structured and unstructured data for data analysis and predictive modeling. Visualize your predictions on a live, interactive dashboard to make smarter decisions and achieve exceptional outcomes to optimize and automate business operations.



INFOSHEET



## AAA KEY BENEFITS

### Deliver insights and predictions

Whether the user is a citizen data scientist or a data scientist, the AAA module can be mastered in minutes. With an intuitive GUI and step-by-step process workflows, users can quickly connect and prepare data with a click of a button.

### Explore data on your own

Discover patterns, spot anomalies, frame hypothesis, and check assumptions by connecting to one or multiple data sources with a live or in-memory connection. Run univariate and/or bivariate statistical testing and explore data structures with feature engineering to select significant columns and features for further analysis.

### Use our pre-built algorithms or build your own

Analance offers 40+ algorithms bundled within 9 methods of analysis. It integrates seamlessly with R and Python zero-coding machine learning algorithms so users can jump start their analysis. If coding is preferred, the platform extends its capability to support custom algorithms.

### Improve accuracy of predictive analytics with ensemble modeling

Run two or more related or different analytical models and then combine outcomes into a single score to improve accuracy of predictive analytics.

### Quickly deploy models into the Analance Business Intelligence (ABI) to visualize

With Analance interactive visualization tools, combine data from multiple sources to create real-time dashboards with full reporting capabilities. Visualize with multi-table, table with sparkline chart, histogram charts, and bar charts. Stay within the same platform to slice and dice predictive output. There is no need to export data.

## WHO USES ANALANCE?

Analance is being used by small, medium, and very large renowned enterprises in Telecommunications, Financial Services, Healthcare, Pharmaceutical and Life Sciences, Retail and Education.

## LOWER TCO WITH THE ANALANCE PLATFORM

Right now, the analytics landscape is scattered – multiple applications, frameworks, and databases are required to go from raw data to predictive insights with several integration challenges. Even with plugins, documentation, and solution experts, integrating and managing three different, unrelated tools is very complicated. You are always up against major costs, data uncertainties, and issues that hurt your bottom line:

- **Hybridization:** Various, difficult to learn and buggy integrations and plugins increase the costs of implementing, resourcing, and managing your analytics solution. Plus, all the different data silos can make it harder to get the insights you need.
- **Infrastructure:** Different platforms means different architectures with specific, separate, and often expensive hardware and virtualization requirements.
- **Maintenance:** Increased labour costs due to the time required to maintain and monitor three solutions.
- **Training:** Prohibitive training costs for administrators, data scientists, and end users.
- **Performance:** Workloads and processes take longer to execute, leading to costly bottlenecks.
- **Usability:** Switching between platforms makes it harder for users to learn and understand how to get their jobs done.

### Explore Analance use cases

<https://analance.ducenit.com/solutions>

### Proof of concept

<https://analance.ducenit.com/proof-of-concept/>

### Demo

<https://analance.ducenit.com/get-a-demo>

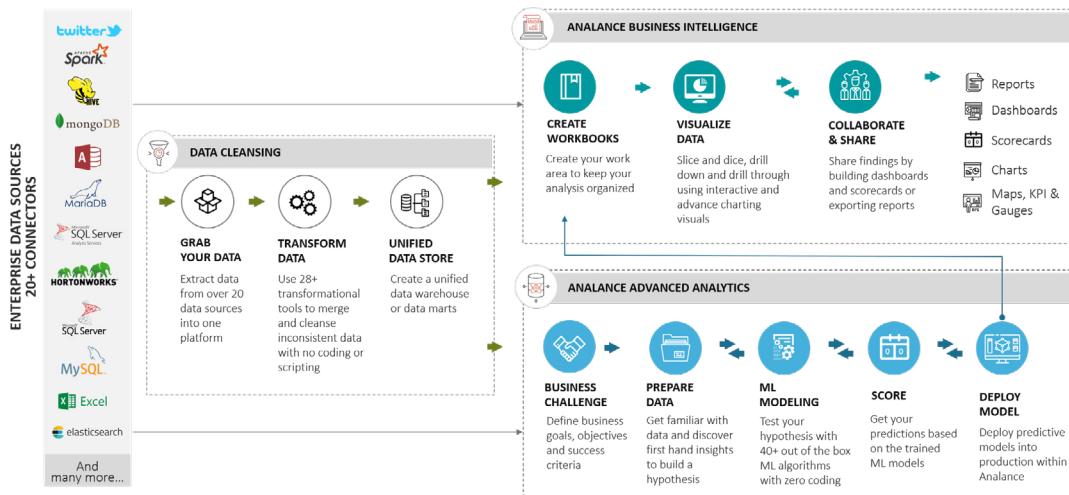
### Free trial

<https://analance.ducenit.com/free-cloud-trial>

For more information please visit [www.analance.com](http://www.analance.com)



## HOW DOES ANALANCE WORK?



AAA seamlessly connects to other Analance modules without any integration challenges or breaks in process flows. Data cleansing, predictive modelling, and business intelligence – all from a single, easy-to-use enterprise analytics platform. Everything from system administration and maintenance to workload performance and training is much easier, leading to a much lower TCO for the solution.

## AAA FEATURES

### 20+ DATA CONNECTORS

- Big Data Sources (Hadoop, Hive)
- API (REST, Odata)
- RDBMS and Files
- Cubes
- Social Media

### 40+ OUT OF THE BOX ALGORITHMS

- Prediction Model (5)
- Classification Model (14)
- Clustering Model (7)
- Survival Analysis Model (2)
- Anomaly Dimensionality Reduction Model (2)
- Forecasting Model (5)
- Text Classification Model (4)
- Text Clustering Model (1)
- Association Rules Model (1)

### DEPLOYMENT OPTIONS

- Cloud** No hardware investments required! Easily scale resources horizontally or vertically to meet organizational needs.
- On-Premise** Maintain control over enterprise data and adhere to in-house security policies to protect confidential data.
- Hybrid** Combine on premise, public, and private cloud options. Control how data is accessed.

### PLATFORM SYSTEM REQUIREMENTS

- Operating System** Windows Server 2016 R2 Standard 64-bit Edition
- Processor** Intel x64 Based Architectures 2.6 GHz Six Core Processor or higher
- Disk Space** 100 GB minimum; 150 GB or higher recommended

### SYSTEM REQUIREMENTS

- Windows** Internet Explorer 11, Mozilla Firefox\*, Google Chrome\*, Opera\* *\*Latest and -1 version*
- Processor** Intel Core Duo compatible or higher recommended
- Memory** 2GB minimum; 4 GB recommended

## ABOUT DUCEN

Ducen is a trusted technology solutions provider that aims to empower Fortune 1000 companies through quality solutions and services. We work with organizations across various verticals to drive business outcomes and enhance their customer experience. Through our enterprise analytics platform, we build and manage data-driven digital platforms including business intelligence and advanced analytics solutions. We also offer a comprehensive services portfolio covering data management, cybersecurity, and application development to help clients stay ahead of the technology curve.

For more information please visit [www.analance.com](http://www.analance.com)

**DUCEN**  
A Sryas Company